

**COLLECTOR CURRENT = 7 AMPS NPN TYPES**

Device No	Case	VCBO Volts	VCEO (sus) Volts	VEBO Volts	hFE		VCE	IC	VCE (sat)	VBE (sat)	@ IC	@ IB	θ <sub>JC</sub> °C/W	F <sub>t</sub> MHz
					Min	Max								
2N3878	TO-66	120	50	7	50	200	5	.5	2	2.5	4	.4	5	60
2N3879	TO-66	120	75	7	12	100	2	4	1.2	2	4	.4	5	60
2N5202	TO-66	100	50	6	10	100	1	4	1.2	1.9	4	.4	5	60
2N5326	TO-111/I	100	80	6	50	150	1	1	1	1.5	5	.5	3.33	80
2N5346	TO-111/I	100	80	6	30	120	2	2	.7	1.2	2	.2	3.33	30
2N5348	TO-111/I	100	100	6	30	120	2	2	.7	1.2	2	.2	3.33	30
2N5349	TO-111/I	100	100	6	60	240	2	2	.7	1.2	2	.2	3.33	30

**COLLECTOR CURRENT = 8 AMPS NPN TYPES**

Device No	Case	VCBO Volts	VCEO (sus) Volts	VEBO Volts	hFE		VCE	IC	VCE (sat)	VBE (sat)	@ IC	@ IB	θ <sub>JC</sub> °C/W	F <sub>t</sub> MHz
					Min	Max								
2N3773	TO-3	160	140	7	15	60	4	8	1.4	2.2	8	.8	1.2	.8

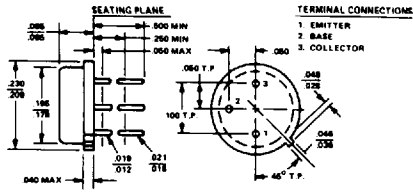
**COLLECTOR CURRENT = 10 AMPS NPN TYPES**

Device No	Case	VCBO Volts	VCEO (sus) Volts	VEBO Volts	hFE		VCE	IC	VCE (sat)	VBE (sat)	@ IC	@ IB	θ <sub>JC</sub> °C/W	F <sub>t</sub> MHz
					Min	Max								
2N1724	TO-61	120	80	10	20	90	15	2	1	2	2	.2	2	10
2N1724A	TO-61	180	120	10	30	90	15	2	.6	1.2	2	.2	1.5	10
2N1725	TO-61	120	80	10	50	150	15	2	1	2	2	.2	1.5	10
2N2811	TO-61	80	60	8	20	60	5	5	.5	1.2	5	.5	2	30
2N2812	TO-61	80	60	8	40	120	5	5	.5	1.2	5	.5	2	30
JAN 2N2812	TO-61	80	60	8	40	120	5	5	.5	1.2	5	.5	2	30
JTX 2N2812	TO-61	80	60	8	40	120	5	5	.5	1.2	5	.5	2	30
JTXV 2N2812	TO-61	80	60	8	40	120	5	5	.5	1.2	5	.5	2	30
2N2813	TO-61	120	80	8	20	60	5	5	.5	1.2	5	.5	2	30
2N2814	TO-61	120	80	8	40	120	5	5	.5	1.2	5	.5	2	30
JAN 2N2814	TO-61	120	80	8	40	120	5	5	.5	1.2	5	.5	2	30
JTX 2N2814	TO-61	120	80	8	40	120	5	5	.5	1.2	5	.5	2	30
JTXV 2N2814	TO-61	120	80	8	40	120	5	5	.5	1.2	5	.5	2	30
2N3442	TO-3	160	140	7	20	70	4	3	1	1.7	3	.3	1.5	.8
JAN * 2N3442	TO-3	160	140	7	20	70	4	3	1	1.7	3	.3	1.5	.8
2N3445	TO-3	80	60	6	20	60	5	3	1.5	1.5	3	.3	1.5	60
2N3446	TO-3	100	80	10	20	60	5	3	1.5	1.5	3	.3	1.5	60
2N3447	TO-3	80	60	6	40	120	5	5	1.5	1.5	5	.5	1.5	60
2N3448	TO-3	100	80	10	40	120	5	5	1.5	1.5	5	.5	1.5	60
2N3487	TO-61	80	60	10	20	60	5	3	1.2	1.5	3	.3	1.5	30
2N3488	TO-61	100	80	10	20	60	5	3	1.2	1.5	3	.3	1.5	30
2N3489	TO-61	120	100	10	15	45	5	3	1.2	1.5	3	.3	1.5	30
2N3490	TO-61	80	60	10	40	120	5	5	1.5	1.5	5	.5	1.5	30
2N3491	TO-61	100	80	10	40	120	5	5	1.5	1.5	5	.5	1.5	30
2N3492	TO-61	120	100	10	30	90	5	5	1.5	1.5	5	.5	1.5	30
2N3628	TO-5	75	40	4	30		10	5	1.5	1.8	5	.5	2.5	60
2N3629	STUD													
2N3629	TO-61	75	40	4	40		10	5	1.5	1.8	5	.5	2	60
2N3630	TO-61	75	40	4	40		10	5	1.5	1.8	5	.5	2	60
2N3919	TO-3	120	60	6	40	120	2	2	1.2	1.8	10	1	1.2	80

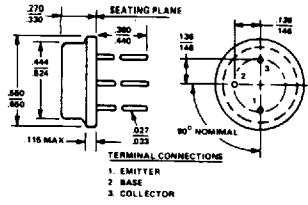
\* (JTX & JTXV)

# PHYSICAL DIMENSIONS - PACKAGES

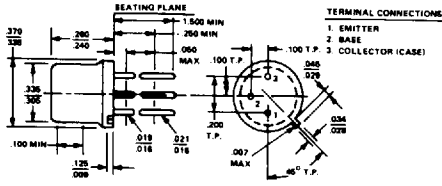
TO-46



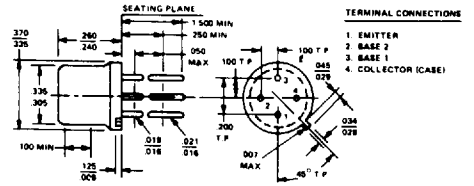
TO-8



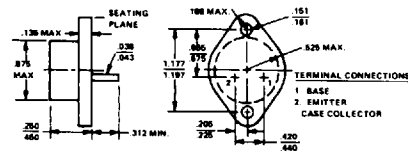
TO-5



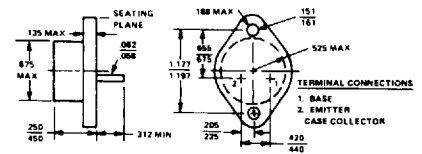
TO-33



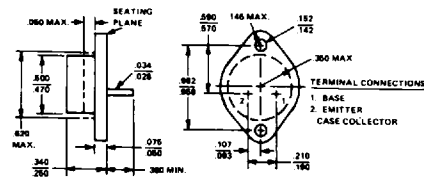
TO-3



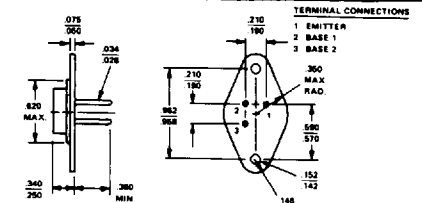
TO-3 (60 mil pins)



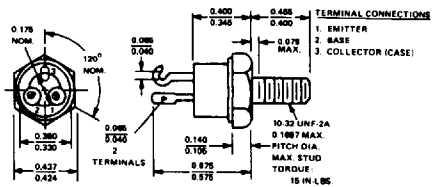
TO-66



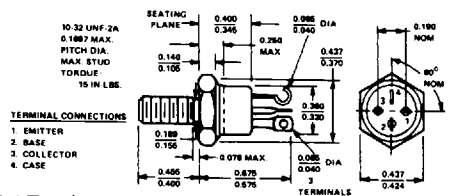
3 PIN TO-66



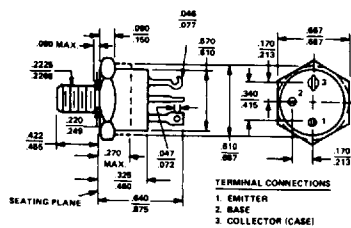
TO-111



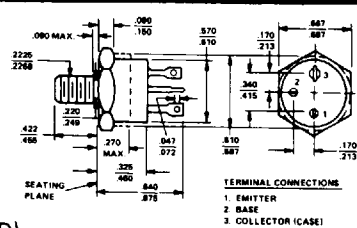
TO-111 (ISOLATED)



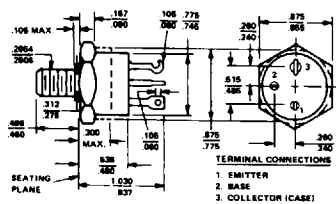
TO-61



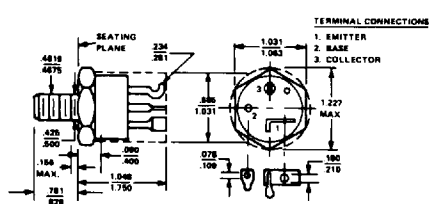
TO-61 (ISOLATED)



TO-63



TO-114



ALL DIMENSIONS IN INCHES