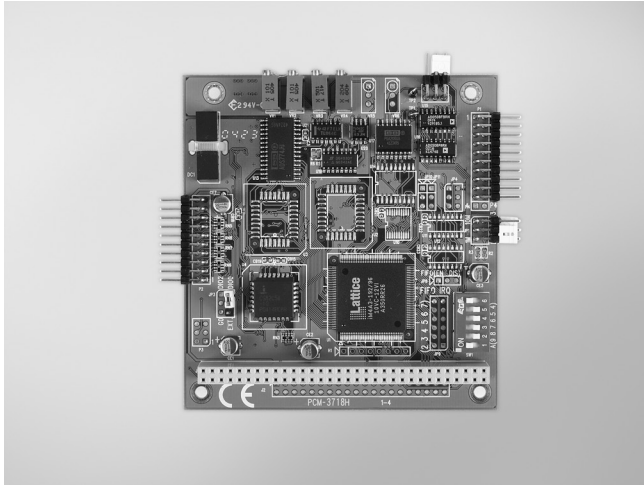


PCM-3718H/HG/HO

PCM-3724

100 kS/s, 12-bit, 16-ch
Multifunction PC/104
Module

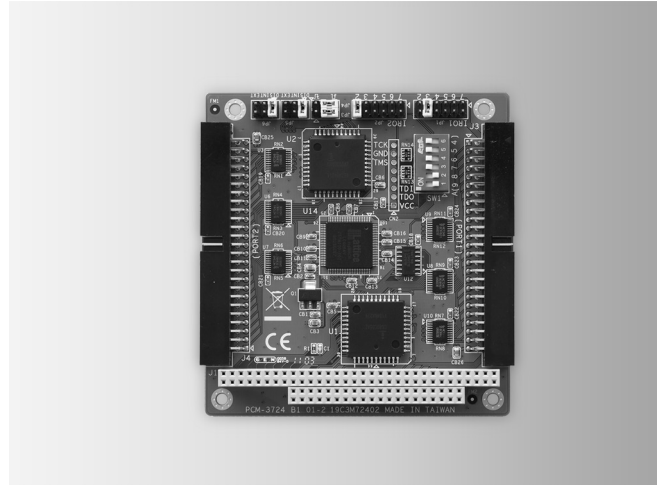
48-ch Digital I/O
PC/104 Module



PCM-3718H/HG/HO

RoHS
COMPLIANT
2009/95/EC

FCC CE



PCM-3724

RoHS
COMPLIANT
2009/95/EC

FCC CE

Specifications

Analog Input

- Channels 16 single-ended / 8 differential
- Resolution 12 bits
- Max. Sampling Rate 100 KHz* (DMA transfer)
*80 kHz on P4-based (or upper) system
- Input Impedance 10 M Ω
- Sampling Modes Software, pacer or external
- Input Range

PCM-3718H and PCM-3718HO	Bipolar	$\pm 10, \pm 5, \pm 2.5, \pm 1.25, \pm 0.625$
	Unipolar	0 - 10, 0 - 5, 0 - 2.5, 0 - 1.25
PCM-3718HG	Bipolar	$\pm 10, \pm 5, \pm 1, \pm 0.5, \pm 0.1, \pm 0.05, \pm 0.01, \pm 0.005$
	Unipolar	0 - 10, 0 - 1, 0 - 0.1, 0 - 0.01

Analog Output (PCM-3718HO only)

- Channels 1 (12 bits)
- Output Range

Internal Reference	Unipolar (V)	0 - 5, 0 - 10
External Reference (V)		0 - 10, 0 - -10

- Slew Rate 10 V/ μ s
- Output Impedance 0.1 W max.

Digital Input/Output

- Channels 16, 5V/TTL
- Input Voltage Logic 0: 0.8 V max.
Logic 1: 2.0 V min.
- Output Voltage Logic 0: 0.33 V max. @ 6 mA
Logic 1: 3.84 V min. @ 6 mA

General

- Bus Type PC/104
- I/O Connectors 2 x 20-pin box header
- Dimensions (L x H) 96 x 90 mm (3.8" x 3.5")
- Power Consumption Typical: 5 V @ 180 mA
Max.: 5 V @ 400 mA
- Operating Temperature 0 ~ 60° C (32 ~ 140° F)
- Storage Temperature -40 ~ 85° C (-40 ~ 185° F)

Ordering Information

- PCM-3718H 100 kS/s, 12-bit Multi. PC/104 Module
- PCM-3718HG 100 kS/s, 12-bit High-gain Multi. PC/104 Module
- PCM-3718HO 100 kS/s, 12-bit Multi. PC/104 Module w/AO

Accessories

- ADAM-3920 20-pin DIN-rail Flat Cable Wiring Board
- PCL-10120-1 20-pin Flat Cable, 1 m
- PCL-10120-2 20-pin Flat Cable, 2 m

Features

- 48 TTL digital I/O lines
- Output status read-back
- Channels simulate 8255 PPI mode 0
- Interrupt triggering, rising/falling edge

Specifications

Digital Input

- Channels 48 (shared with output)
- Compatibility 5 V/TTL
- Input Voltage Logic 0: 0.8 V max. @ -1 μ A
Logic 1: 2.0 V min. @ 1 μ A
- Interrupt Capable Ch. 2

Digital Output

- Channels 48 (shared with input)
- Compatibility 5 V/TTL
- Output Voltage Logic 0: 0.4 V max. @ 35 mA max.
Logic 1: 2.0 V min. @ -35 mA max.

General

- Bus Type PC/104
- I/O Connectors 2 x 50-pin box header
- Dimensions (L x H) 96 x 90 mm (3.8" x 3.5")
- Power Consumption 5 V @ 90 mA
- Operating Temperature 0 ~ 60° C (32 ~ 140° F)
- Storage Temperature -40 ~ 85° C (-40 ~ 185° F)
- Storage Humidity 0 ~ 90% RH, non-condensing

Ordering Information

- PCM-3724 48-ch Digital I/O PC/104 Module w/ 50-pin Cable

Accessories

- ADAM-3950 50-pin DIN-rail Flat Cable Wiring Board
- PCLD-782B 24-ch IDI Board w/ 20-pin & 50-pin Flat Cables
- PCLD-785B 24-ch Relay Board w/ 20-pin & 50-pin Flat Cables
- PCL-10150-1.2 50-pin Flat Cable, 1.2 m