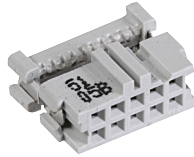


PAK 100 0.100" × 0.100" Wiremount Socket Connectors

These connectors terminate to 26 or 28 AWG solid/stranded and 30 AWG solid wire, and are compatible with most headers on a 0.1" × 0.1" grid. Dual and center bump polarity. 30 μ' gold on wiping surface, beryllium copper contacts.

The 3000 Series provides high performance and is compatible with most 0.100" × 0.100" headers.

- Features:**
- ▶ 40-Year Life Tested Beryllium Copper Contacts (30 μ' Gold Plate)
 - ▶ Accepts Flat Cable or Discrete Wire (26 or 28 AWG Solid Stranded)
 - ▶ Positive Locking Metal "J" Clips Provided



Connectors

Stock No.	Mfr.'s Type	No. of Contacts	EACH		
			1-9	10-24	25-49
70114817	3473-6600	10	1.78	1.63	1.51
70114818	3385-6600	14	2.15	1.97	1.82
70114819	3452-6600	16	2.36	2.16	1.99
70114820	3421-6600	20	2.60	2.38	2.20
70114821	3399-6600	26	3.36	3.08	2.84
70114822	3419-6600	30	3.86	3.54	3.26
70114823	3414-6600	34	4.38	4.01	3.70
70114824	3417-6600	40	4.80	4.68	4.35
70114825	3425-6600	50	6.05	5.88	5.43
70114826	3334-6600	60	7.96	7.29	6.73

Clip-On Strain Relief

Stock No.	Mfr.'s Type	No. of Contacts	EACH		
			1-24	25-49	50-99
70114827	3448-3010	10	.36	.31	.27
70114828	3448-3014	14	.36	.31	.27
70114829	3448-3016	16	.36	.31	.27
70114830	3448-3020	20	.36	.31	.27
70114831	3448-3026	26	.36	.31	.27
70114832	3448-3030	30	.66	.57	.50
70114833	3448-3034	34	.36	.31	.27
70114834	3448-3040	40	.36	.31	.27
70114835	3448-3050	50	.36	.31	.27
70114836	3448-3060	60	.35	.30	.25

Call your local Allied sales representative at 1-800-433-5700 for cable assemblies.

PAK 100 0.100" × 0.100" Wiremount IDC Sockets

These high-quality, standard-performance IDC sockets minimize applied assembly costs without sacrificing reliability.

- ▶ Pre-Assembled Connector Body
- ▶ Pin One Indicated with a Red Stripe
- ▶ Double-Recessed Cover Supports Cable Termination from Either Side of Connector
- ▶ UL 94V-0, Gray
- ▶ 28 AWG Stranded
- ▶ Contact Plating: Wipe Area — 30 μ' Gold; Under Plate — 100 μ' Nickel
- ▶ Polarizing Center Bump
- ▶ UL File No.: E68080; CSA File No. LR40971



Connectors

Stock No.	Mfr.'s Type	No. of Contacts	EACH		
			1-9	10-49	50-99
70115103	89110-0101	10	.45	.41	.38
70115104	89114-0101	14	.48	.44	.39
70115105	89116-0101	16	.60	.55	.50
70115106	89120-0101	20	.70	.65	.60
70115107	89124-0101	24	.94	.89	.83
70115108	89126-0101	26	.61	.55	.50
70115109	89130-0101	30	.98	.91	.84
70115111	89134-0101	34	1.04	.98	.92
70115112	89136-0101	36	.86	—	—
70115113	89140-0101	40	1.15	1.05	.97
70115114	89144-0101	44	1.17	—	—
70115115	89150-0101	50	1.20	1.10	.99
70115116	89160-0101	60	1.28	1.17	1.08

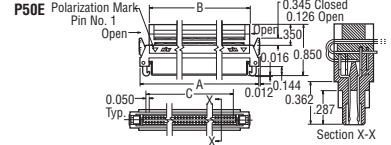
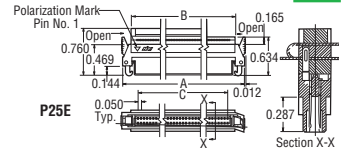
Strain Reliefs and Accessories

Stock No.	Mfr.'s Type	Description	EACH	
			1-24	25-49
70115117	3448-89110	10 Pos. Strain Relief	.34	.29
70115118	3448-89114	14 Pos. Strain Relief	.30	.25
70115119	3448-89116	16 Pos. Strain Relief	.34	.29
70115120	3448-89120	20 Pos. Strain Relief	.15	—
70115121	3448-89124	24 Pos. Strain Relief	.21	.20
70115122	3448-89126	26 Pos. Strain Relief	.34	.29
70115123	3448-89130	30 Pos. Strain Relief	.30	.25
70115124	3448-89134	34 Pos. Strain Relief	.30	.25
70115125	3448-89136	36 Pos. Strain Relief	.45	.38
70115126	3448-89140	40 Pos. Strain Relief	.34	.29
70115127	3448-89144	44 Pos. Strain Relief	.19	—
70115128	3448-89150	50 Pos. Strain Relief	.34	.29
70115129	3448-89160	60 Pos. Strain Relief	.49	.41
70115132	3490-89110	Pull Tab 10-20 Position	.13	—
70115133	3490-89140	Pull Tab 40-60 Position	.18	.17
70115130	3435-0	Keying Plug	.13	.10

PAK 50 0.050" IDC Sockets — P25E/P50E Series



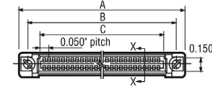
P25E sockets, which accept 30 AWG, 25 mil. center flat cable and P50E sockets, which accept 28 AWG, 50 mil. center flat cable are designed to mate with P50E Series boardmount plugs, ordered separately on this page. Latching eject mechanism facilitates mating/unmating. The P25E provides daisy chain capability. The P50E socket accommodates backward and forward capability in that standard 0.100" and 0.050" connectors can be used on one cable assembly. Redundant ribbon contact design provides lower insertion/withdrawal forces, lower contact resistance, high normal force and high wear resistance. Contacts are recessed and fully protected on three sides, minimizing pin deformation. Phosphor bronze contacts plated with gold over nickel on contact area, tin over nickel on terminal area. **Contact Resistance:** 30 mΩ. **Current Rating:** 0.5 A. Black, glass-filled nylon body, rated UL 94V-0. **Temperature Range:** -55°C to +105°C.



Stock No.	Mfr.'s Type	No. of Contacts	Dimensions (Inches)			EACH	
			A	B	C	1-9	10-24
70207071	P25E-050S-EA	50	1.846	1.452	1.200	8.86	—
70207072	P25E-080S-EA	80	2.596	2.202	1.950	10.83	10.05
70207065	P25E-100S-EA	100	3.096	2.702	2.450	10.87	10.15
70207066	P50E-080S-EA	80	2.596	2.202	1.950	12.75	11.77
70207073	P50E-100S-EA	100	3.096	2.702	2.450	12.63	12.27

PAK 50 0.050" IDC Sockets — P50E Series

PAK 50 interconnect system features a redundant ribbon contact that provides lower insertion/withdrawal forces, lower contact resistance, high normal forces and high wear resistance. 3D mating versatility—horizontal, vertical and parallel. Both male and female contacts are recessed and fully protected on 3 sides, minimizing pin deformation. Available in 20-100 pin positions. 0.118" long straight and right-angle soldered terminals with retention clip to eliminate hardware and secure connector during wave soldering. Phosphor bronze contacts plated with gold on contact area and tin on terminal area over nickel. **Contact Resistance:** 25 mΩ maximum. **Current Rating:** 0.5 A/contact. Black, glass-filled nylon housing with flange, rated UL 94V-0. **Insulation Resistance:** 1000 MΩ minimum @ 500 VDC.



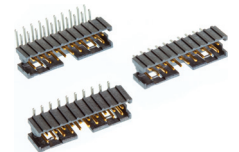
Solder Terminal Straight Sockets

Stock No.	Mfr.'s Type	No. of Contacts	Dimensions (Inches)			EACH	
			A	B	C	1-9	10-24
70207074	P50-020S-R1-EA	20	1.001	0.800	0.529	2.42	—
70207075	P50-026S-R1-EA	26	1.151	0.950	0.679	2.56	—
70207076	P50-050S-R1-EA	50	1.751	1.550	1.279	3.23	—
70207077	P50-080S-R1-EA	80	2.501	2.300	2.029	3.93	3.83
70207078	P50-100S-R1-EA	100	3.001	2.800	2.529	4.49	—

IDC Ribbon Cable Socket 158 Series — Shrouded Header 159 Series

This new line of 2 mm pitch Ribbon Cable to PCB interconnects consists of an IDC style cable mount socket (158 Series) and a shrouded PCB header in multiple configurations (159 Series). Each series is available in multiple tiered offerings with a broad array of competitive options in 8 through 50 positions.

- Features:**
- ▶ **Ribbon Cable Sockets, 158 Series**
 - ▶ Terminate to 1 mm Pitch Ribbon Cable
 - ▶ 30 μ' Au Plating with Adhesive Backed Cover



- ▶ **Shrouded Boardmount Headers, 159 Series**
- ▶ 2.00 mm × 2.00 mm Grid Footprint
- ▶ Mate to the 158 Series Sockets, Vertical/Thru-Hole and SMT Mount

Wiremount IDC Sockets, 158 Series

Stock No.	Mfr.'s Type	Description	EACH
70114238	158208-0120	2 mm Cable, 8 Pos.	1.42
70114281	158210-0120	2 mm Cable, 10 Pos.	1.48
70114319	158220-0120	2 mm Cable, 20 Pos.	1.79
70114404	3448-15808	2 mm Strain Relief, 8 Pos.	.25
70114423	3448-15810	2 mm Strain Relief, 10 Pos.	.24
70114480	3448-15820	2 mm Strain Relief, 20 Pos.	.26

Boardmount Headers, 159 Series

Stock No.	Mfr.'s Type	Description	EACH
70114484	159108-6012	8 Pos. Header, Vert. Gold	1.00
70114485	159110-6012	10 Pos. Header, Vert. Gold	1.07
70114486	159120-6002	20 Pos. Header, Vert. Gold	1.38
70114490	159108-5012	8 Pos. Header, R/A Gold	1.16
70114491	159110-5012	10 Pos. Header, R/A Gold	1.22
70114492	159120-5002	20 Pos. Header, R/A Gold	1.53
70114496	159108-2012	8 Pos. Header, Vert.	1.31
70114497	159110-2012	10 Pos. Header, Vert.	1.38
70114498	159120-2002	20 Pos. Header, Vert.	1.68