

Sta-Kon® terminals, splices, disconnects and tools



Nylon insulation

- UL listed,
- CSA certified
- 600 V, 105° C

Wire size	Ring	Fork	Locking fork	Ring	Fork	Locking fork	Non-insulated flag
22-18 AWG	#4 Stud RA18-6	#6 Stud RA18-6F	#8 Stud RA18-6F	#4 Stud RA18-6	#6 Stud RA18-6F	#8 Stud RA18-6F	#4 Stud RA18-6
18-14 AWG	#6 Stud RB14-6	#8 Stud RB14-6F	#10 Stud RB14-6F	#6 Stud RB14-6	#8 Stud RB14-6F	#10 Stud RB14-6F	#6 Stud RB14-6
12-10 AWG	#8 Stud RC10-6	#10 Stud RC10-6F	#12 Stud RC10-6F	#8 Stud RC10-6	#10 Stud RC10-6F	#12 Stud RC10-6F	#8 Stud RC10-6

Vinyl insulation

- UL listed,
- CSA certified
- 600 V, 105° C

Wire size	Ring	Fork	Locking fork	Ring	Fork	Locking fork	Non-insulated flag
22-18 AWG	#4 Stud RA18-6	#6 Stud RA18-6F	#8 Stud RA18-6F	#4 Stud RA18-6	#6 Stud RA18-6F	#8 Stud RA18-6F	#4 Stud RA18-6
18-14 AWG	#6 Stud RB14-6	#8 Stud RB14-6F	#10 Stud RB14-6F	#6 Stud RB14-6	#8 Stud RB14-6F	#10 Stud RB14-6F	#6 Stud RB14-6
12-10 AWG	#8 Stud RC10-6	#10 Stud RC10-6F	#12 Stud RC10-6F	#8 Stud RC10-6	#10 Stud RC10-6F	#12 Stud RC10-6F	#8 Stud RC10-6

Non-insulated

- UL listed,
- CSA certified
- 600 V, 150° C

Wire size	Ring	Fork	Locking fork	Ring	Fork	Locking fork	Non-insulated flag
22-18 AWG	#4 Stud RA18-6	#6 Stud RA18-6F	#8 Stud RA18-6F	#4 Stud RA18-6	#6 Stud RA18-6F	#8 Stud RA18-6F	#4 Stud RA18-6
18-14 AWG	#6 Stud RB14-6	#8 Stud RB14-6F	#10 Stud RB14-6F	#6 Stud RB14-6	#8 Stud RB14-6F	#10 Stud RB14-6F	#6 Stud RB14-6
12-10 AWG	#8 Stud RC10-6	#10 Stud RC10-6F	#12 Stud RC10-6F	#8 Stud RC10-6	#10 Stud RC10-6F	#12 Stud RC10-6F	#8 Stud RC10-6

Splices

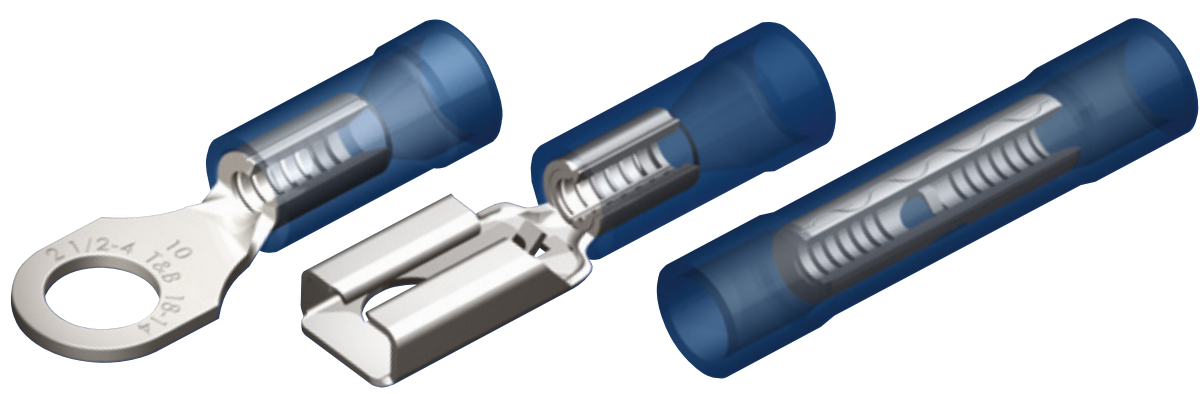
- UL listed,
- CSA certified
- 600 V, 105° C

Wire size	Nylon aircraft system splices	Splices
22-18 AWG	Nylon butt 2814	Nylon butt 2814
18-14 AWG	Nylon parallel 2812	Nylon parallel 2812
12-10 AWG	Nylon butt 2814	Nylon butt 2814

Disconnects

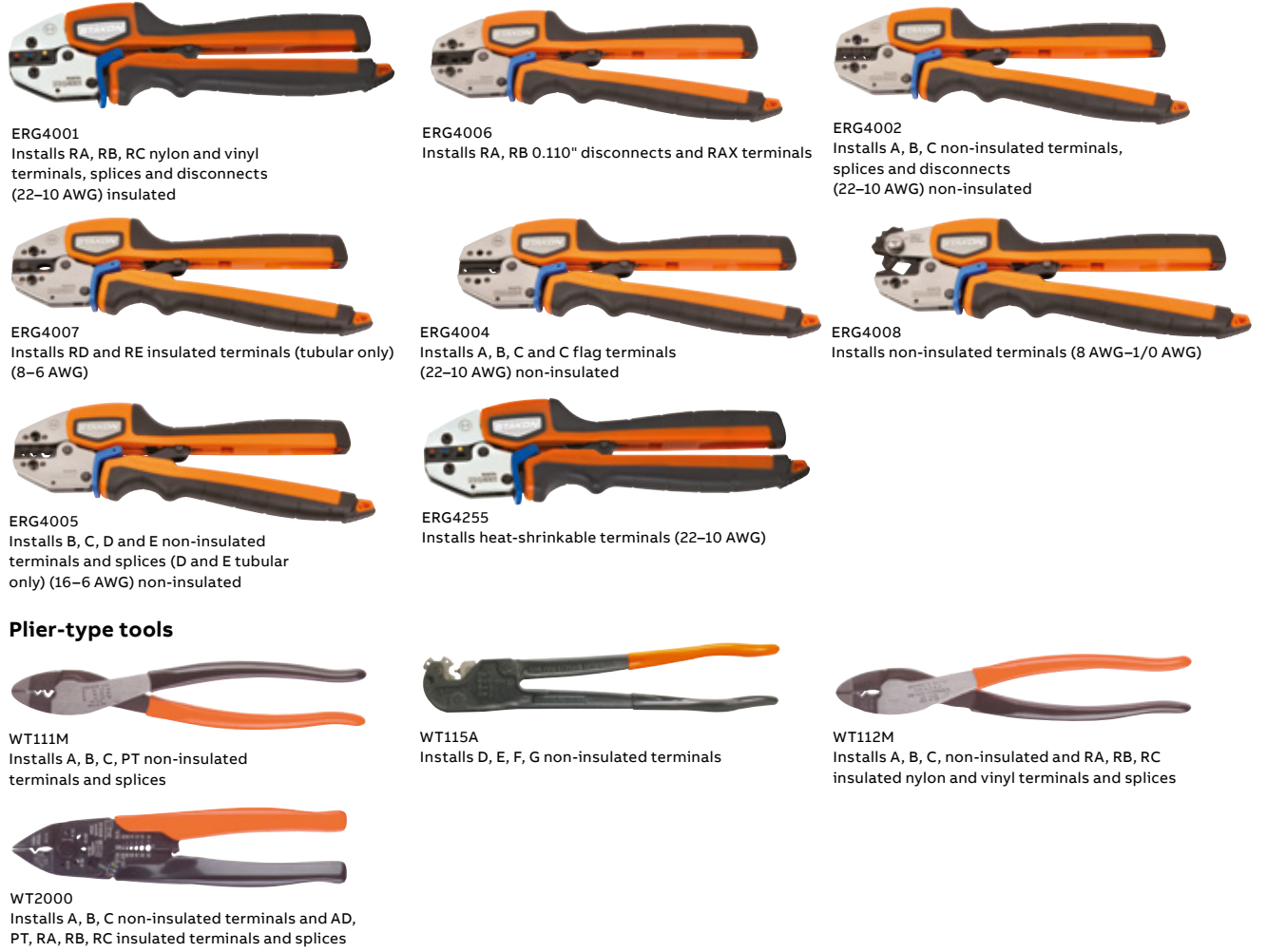
- UL listed,
- CSA certified
- 300 V, 105° C

Wire size	Nylon insulation ring	Vinyl insulation ring	Non-insulated ring
22-18 AWG	Tab size 0.250" x 0.032" RA18-250P	Tab size 0.250" x 0.032" RA18-250P	Tab size 0.250" x 0.032" RA18-250
18-14 AWG	Tab size 0.187" x 0.032" RA18-187P	Tab size 0.187" x 0.032" RA18-187P	Tab size 0.187" x 0.032" RA18-187
12-10 AWG	Tab size 0.125" x 0.032" RA12-125P	Tab size 0.125" x 0.032" RA12-125P	Tab size 0.125" x 0.032" RA12-125



Tools

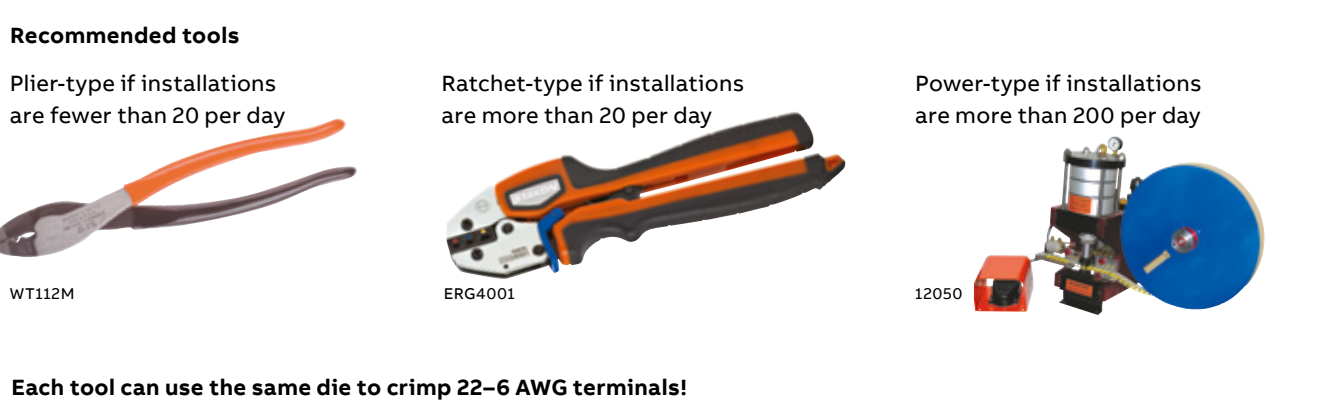
Comfort Crimp® ergonomic crimping tools



Plier-type tools



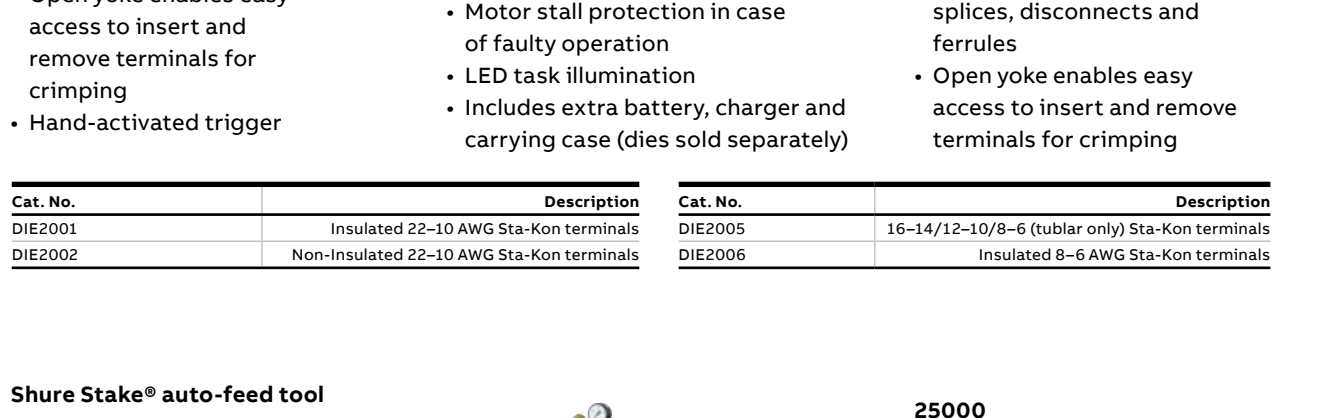
Ratchet hand tools



Ferrule tools



Recommended tools



Cross reference for packaging

ABB distributor package	ABB distributor package	ABB distributor package	ABB distributor package	ABB distributor package	ABB distributor package	ABB distributor package	ABB distributor package
RA18-6	RA18-6F	RA18-6F	RA18-6F	RA18-6F	RA18-6F	RA18-6F	RA18-6F
RA18-6F	RA18-6F	RA18-6F	RA18-6F	RA18-6F	RA18-6F	RA18-6F	RA18-6F
RA18-6F	RA18-6F	RA18-6F	RA18-6F	RA18-6F	RA18-6F	RA18-6F	RA18-6F

Heavy duty ring terminals

- 0.050" thick copper tongues

Stud size and clearance hole chart	Nylon insulation ring	Vinyl insulation ring	Non-insulated ring
Stud size (in.)	5/16 Stud RBC14-6	5/16 Stud RBC14-6F	5/16 Stud RBC14-6
Min. hole dia.	5/16 Stud RBC14-6	5/16 Stud RBC14-6F	5/16 Stud RBC14-6
4	5/16 Stud RBC14-6	5/16 Stud RBC14-6F	5/16 Stud RBC14-6
4	5/16 Stud RBC14-6	5/16 Stud RBC14-6F	5/16 Stud RBC14-6
6	5/16 Stud RBC14-6	5/16 Stud RBC14-6F	5/16 Stud RBC14-6
8	5/16 Stud RBC14-6	5/16 Stud RBC14-6F	5/16 Stud RBC14-6
10	5/16 Stud RBC14-6	5/16 Stud RBC14-6F	5/16 Stud RBC14-6
1/4 Stud	5/16 Stud RBC14-6	5/16 Stud RBC14-6F	5/16 Stud RBC14-6
3/8 Stud	5/16 Stud RBC14-6	5/16 Stud RBC14-6F	5/16 Stud RBC14-6
1/2 Stud	5/16 Stud RBC14-6	5/16 Stud RBC14-6F	5/16 Stud RBC14-6

Heat-shrinkable terminals

These ring terminals, for use on terminals and butt splices are self-insulated with polyolefin heat shrink and internally coated sealant. Upon complete installation, the self-sealed connection is achieved to protect the joint against the degrading effects of galvanic action, corrosion and environmental exposure.

The Sta-Kon terminal numbering system

Distributor package 100/50, bulk OEM packaged 1000/500

Common to both packages

Letter A denotes 22-18 AWG wire range

Letter B denotes 18-14 AWG wire range

Letter C denotes 12-10 AWG wire range

Letter R preceding the above letters indicates the terminal is insulated

No letter R... no insulation... no exception!

Distributor packaged Part numbers are very descriptive. Including insulation and type, stud size, tongue style and the largest maximum wire that can be put inside.

Letter R precedes the number, if the letter R precedes the number, the part is nylon insulated - RA18-B

If the letter R follows the number, the part is vinyl insulated - 14RB-B

EXAMPLE: 10RC-6F C - Indicates 12-10 AWG 10RC - Vinyl Insulated 6 - Indicates stud size F - Means a fork tongue terminal FL - Would indicate locking fork

EXAMPLE: 2RA18X 2 - Indicates a 2-way or butt-style connector X - Means expanded insulation.



Packaging offers greater convenience

- Moisture- and impact-resistant plastic container protects terminals from dampness and crushing
- Snap-tight lid prevents spills
- Clear plastic makes it easy to see the type, size and quantity of terminals within

Wire joints

Crimp style

- Nylon RB44
- 4 #18 min.
- 4 #12 max.

Ferrules

Crimp style

- Ferrules ensure reliable electrical connections when terminating conductors in screw clamp terminal blocks
- Fraying and breaking of wire strands is prevented and the possibility of an unreliable connection is minimized
- Insulated ferrules prevent conductor breakage due to bending, wire stress or vibration, while facilitating wire insertions into the terminal block clamp
- Ferrules are the preferred alternative to twisting wire strands or tinning the wire end before terminating into a terminal block
- Ferrules are thin-walled copper tubes, which are mechanically crimped onto the ends of stranded wires
- They are easy to use - simply strip the wire, slide the ferrule onto the end of the wire and crimp

Two-piece nylon insulation P66M

- 4 #18 min.
- 3 #12 max.
- 3 #10 min.

UL listed, CSA certified 600V, 90° C

UL listed, CSA certified 600V, 90° C

UL listed, CSA certified 600V, 90° C

UL listed, CSA certified 600V, 90° C

UL listed, CSA certified 600V, 90° C

UL listed, CSA certified 600V, 90° C

UL listed, CSA certified 600V, 90° C

UL listed, CSA certified 600V, 90° C

UL listed, CSA certified 600V, 90° C

UL listed, CSA certified 600V, 90° C

UL listed, CSA certified 600V, 90° C

UL listed, CSA certified 600V, 90° C

UL listed, CSA certified 600V, 90° C

Each tool can use the same die to crimp 22-6 AWG terminals!

Air hydraulic tool

Heavy-duty battery-powered crimp tool

Air-operated bench-mounted tools

PAIR22-6

1.5 tons of crimping force

Exclusive UL listing

Powerful lithium-ion battery with charge level indicator

Rugged, all-steel construction

360° rotating head

Installs Sta-Kon terminals, splices, disconnects and ferrules

Accepts ABB standard hand tool dies

Open yoke enables easy access to insert and remove terminals for crimping

Hand-actuated trigger

Shure Stake® auto-feed tool

12050

Shure Stake mechanism

Fully guarded foot pedal

Clear plastic safety guard over die area

Dies color-coded to terminals

Compact, pneumatically operated unit

Installs Sta-Kon insulated and non-insulated terminals and disconnects from 22-10 AWG

Sta-kit installation kits

Selection of frequently used vinyl terminals, splices and disconnects

Includes WT-112M crimping tool, Ty-Rap® cable ties and marker book

Includes sturdy metal carrying case

Power-type if installations are more than 200 per day

Ratchet-type if installations are more than 20 per day

Plier-type if installations are fewer than 20 per day

WT112M

ERG4000

12050

BAIT22-6

1.5 tons of crimping force

Powerful lithium-ion battery with charge level indicator

Rugged, all-steel construction

360° rotating head

Installs Sta-Kon terminals, splices, disconnects and ferrules

Accepts ABB standard hand tool dies

Open yoke enables easy access to insert and remove terminals for crimping

Hand-actuated trigger

Shure Stake® auto-feed tool

25000

Compact heavy-duty tool

Installs Sta-Kon insulated and non-insulated terminals on wire sizes from 8 AWG to 250 MCM

Foot actuated

Wire strippers

ERG-IWS

Cuts and strips

Lightweight, moderate use

Military standard cross reference

MIL-T-7928 MS-2036	Abb. cat. class 182	MIL-T-7928 MS-2036	Abb. cat. class 182	MIL-T-7928 MS-2069	Abb. cat. class 182	MIL-T-7928 MS-1743	Abb. cat. no.
-01	RA18-6	-01	RA18-6	-01	RA18-6	-01	RA18-6
-02	RA18-6F	-02	RA18-6F	-02	RA18-6F	-02	RA18-6F
-03	RA18-6F	-03	RA18-6F	-03	RA18-6F	-03	RA18-6F
-04	RA18-6F	-04	RA18-6F	-04	RA18-6F	-04	RA18-6F
-05	RA18-6F	-05	RA18-6F	-05	RA18-6F	-05	RA18-6F
-06	RA18-6F	-06	RA18-6F	-06	RA18-6F	-06	RA18-6F
-07	RA18-6F	-07	RA18-6F	-07	RA18-6F	-07	RA18-6F
-08	RA18-6F	-08	RA18-6F	-08	RA18-6F	-08	RA18-6F
-09	RA18-6F	-09	RA18-6F	-09	RA18-6F	-09	RA18-6F
-10	RA18-6F	-10	RA18-6F	-10	RA18-6F	-10	RA18-6F
-11	RA18-6F	-11	RA18-6F	-11	RA18-6F	-11	RA18-6F
-12	RA18-6F	-12	RA18-6F	-12	RA18-6F	-12	RA18-6F
-13	RA18-6F	-13	RA18-6F	-13	RA18-6F	-13	RA18-6F
-14	RA18-6F	-14	RA18-6F	-14	RA18-6F	-14	RA18-6F
-15	RA18-6F	-15	RA18-6F	-15	RA18-6F	-15	RA18-6F
-16	RA18-6F	-16	RA18-6F	-16	RA18-6F	-16	RA18-6F
-17	RA18-6F	-17	RA18-6F	-17	RA18-6F	-17	RA18-6F
-18	RA18-6F	-18	RA18-6F	-18	RA18-6F	-18	RA18-6F
-19	RA18-6F	-19	RA18-6F	-19	RA18-6F	-19	RA18-6F
-20	RA18-6F	-20	RA18-6F	-20	RA18-6F	-20	RA18-6F
-21	RA18-6F	-21	RA18-6F	-21	RA18-6F	-21	RA18-6F
-22	RA18-6F	-22	RA18-6F	-22	RA18-6F	-22	RA18-6F
-23	RA18-6F	-23	RA18-6F	-23	RA18-6F	-23	RA18-6F
-24	RA18-6F	-24	RA18-6F	-24	RA18-6F	-24	RA18-6F
-25	RA18-6F	-25	RA18-6F	-25	RA18-6F	-25	RA18-6F
-26	RA18-6F	-26	RA18-6F	-26	RA18-6F	-26	RA18-6F
-27	RA18-6F	-27	RA18-6F	-27	RA18-6F	-27	RA18-6F
-28	RA18-6F	-28	RA18-6F	-28	RA18-6F	-28	RA18-6F
-29	RA18-6F	-29	RA18-6F	-29	RA18-6F	-29	RA18-6F
-30	RA18-6F	-30	RA18-6F	-30	RA18-6F	-30	RA18-6F
-31	RA18-6F	-31	RA18-6F	-31	RA18-6F	-31	RA18-6F
-32	RA18-6F	-32	RA18-6F	-32	RA18-6F	-32	RA18-6F
-33	RA18-6F	-33	RA18-6F	-33	RA18-6F	-33	RA18-6F
-34	RA18-6F	-34					