



LG

website:<http://biz.LGservice.com>
e-mail:<http://www.LGservice.com/techsup.html>

COLOR TV

SERVICE MANUAL

CHASSIS : MC-036A

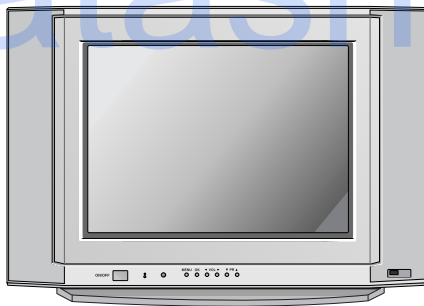
MODEL : 29FX5RJ/RNB/RNX

29FX5RJ/RNB/RNX-TK

CAUTION

BEFORE SERVICING THE CHASSIS,
READ THE SAFETY PRECAUTIONS IN THIS MANUAL.

Datasheet.Live



CONTENTS

CONTENTS	2
SAFETY PRECAUTIONS	3
SERVICING PRECAUTIONS	4
DESCRIPTION OF CONTROLS	6
SPECIFICATION	9
ADJUSTMENT INSTRUCTION.....	11
TROUBLE SHOOTING	17
BLOCK DIAGRAM.....	21
EXPLODED VIEW	24
EXPLODED VIEW PARTS LIST	25
REPLACEMENT PARTS LIST	26
SVC. Sheet	
PRINTED CIRCUIT BOARD	

SAFETY PRECAUTIONS

IMPORTANT SAFETY NOTICE

Many electrical and mechanical parts in this chassis have special safety-related characteristics. These parts are identified by Δ in the Schematic Diagram and Replacement Parts List.

It is essential that these special safety parts should be replaced with the same components as recommended in this manual to prevent X-RADIATION, Shock, Fire, or other Hazards.

Do not modify the original design without permission of manufacturer.

General Guidance

An **isolation Transformer should always be used** during the servicing of a receiver whose chassis is not isolated from the AC power line. Use a transformer of adequate power rating as this protects the technician from accidents resulting in personal injury from electrical shocks.

It will also protect the receiver and its components from being damaged by accidental shorts of the circuitry that may be inadvertently introduced during the service operation.

If any fuse (or Fusible Resistor) in this TV receiver is blown, replace it with the specified.

When replacing a high wattage resistor (Oxide Metal Film Resistor, over 1W), keep the resistor 10mm away from PCB.

Keep wires away from high voltage or high temperature parts.

Due to high vacuum and large surface area of picture tube, extreme care should be used in **handling the Picture Tube**. Do not lift the Picture tube by its Neck.

X-RAY Radiation

Warning:

The source of X-RAY RADIATION in this TV receiver is the High Voltage Section and the Picture Tube. For continued X-RAY RADIATION protection, the replacement tube must be the same type tube as specified in the Replacement Parts List.

To determine the presence of high voltage, use an accurate high impedance HV meter.

Adjust brightness, color, contrast controls to minimum.

Measure the high voltage.

The meter reading should indicate

23.5 \pm 1.5KV: 14-19 inch, 26 \pm 1.5KV: 19-21 inch,

29.0 \pm 1.5KV: 25-29 inch, 30.0 \pm 1.5KV: 32 inch

If the meter indication is out of tolerance, immediate service and correction is required to prevent the possibility of premature component failure.

Before returning the receiver to the customer,

always perform an **AC leakage current check** on the exposed metallic parts of the cabinet, such as antennas, terminals, etc., to be sure the set is safe to operate without damage of electrical shock.

Leakage Current Cold Check(Antenna Cold Check)

With the instrument AC plug removed from AC source, connect an electrical jumper across the two AC plug prongs. Place the AC switch in the on position, connect one lead of ohm-meter to the AC plug prongs tied together and touch other ohm-meter lead in turn to each exposed metallic parts such as antenna terminals, phone jacks, etc.

If the exposed metallic part has a return path to the chassis, the measured resistance should be between $1M\Omega$ and $5.2M\Omega$.

When the exposed metal has no return path to the chassis the reading must be infinite.

An other abnormality exists that must be corrected before the receiver is returned to the customer.

Leakage Current Hot Check (See below Figure)

Plug the AC cord directly into the AC outlet.

Do not use a line Isolation Transformer during this check.

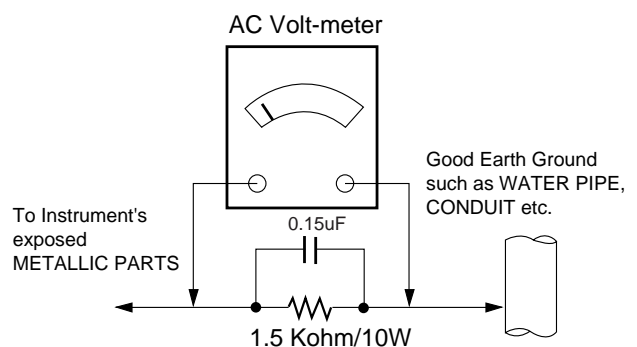
Connect 1.5K/10watt resistor in parallel with a 0.15uF capacitor between a known good earth ground (Water Pipe, Conduit, etc.) and the exposed metallic parts.

Measure the AC voltage across the resistor using AC voltmeter with 1000 ohms/volt or more sensitivity.

Reverse plug the AC cord into the AC outlet and repeat AC voltage measurements for each exposed metallic part. Any voltage measured must not exceed 0.75 volt RMS which is corresponds to 0.5mA.

In case any measurement is out of the limits specified, there is possibility of shock hazard and the set must be checked and repaired before it is returned to the customer.

Leakage Current Hot Check circuit



SERVICING PRECAUTIONS

CAUTION: Before servicing receivers covered by this service manual and its supplements and addenda, read and follow the **SAFETY PRECAUTIONS** on page 3 of this publication.

NOTE: If unforeseen circumstances create conflict between the following servicing precautions and any of the safety precautions on page 3 of this publication, always follow the safety precautions. Remember: Safety First.

General Servicing Precautions

1. Always unplug the receiver AC power cord from the AC power source before;
 - a. Removing or reinstalling any component, circuit board module or any other receiver assembly.
 - b. Disconnecting or re-connecting any receiver electrical plug or other electrical connection.
 - c. Connecting a test substitute in parallel with an electrolytic capacitor in the receiver.

CAUTION: A wrong part substitution or incorrect polarity installation of electrolytic capacitors may result in an explosion hazard.

- d. Discharging the picture tube anode.
2. Test high voltage only by measuring it with an appropriate high voltage meter or other voltage measuring device (DVM, FETVOM, etc) equipped with a suitable high voltage probe. Do not test high voltage by "drawing an arc".
 3. Discharge the picture tube anode only by (a) first connecting one end of an insulated clip lead to the degaussing or kine aquadag grounding system shield at the point where the picture tube socket ground lead is connected, and then (b) touch the other end of the insulated clip lead to the picture tube anode button, using an insulating handle to avoid personal contact with high voltage.
 4. Do not spray chemicals on or near this receiver or any of its assemblies.
 5. Unless specified otherwise in this service manual, clean electrical contacts only by applying the following mixture to the contacts with a pipe cleaner, cotton-tipped stick or comparable non-abrasive applicator; 10% (by volume) Acetone and 90% (by volume) isopropyl alcohol (90%-99% strength)

CAUTION: This is a flammable mixture.

Unless specified otherwise in this service manual, lubrication of contacts is not required.

6. Do not defeat any plug/socket B+ voltage interlocks with which receivers covered by this service manual might be equipped.
7. Do not apply AC power to this instrument and/or any of its electrical assemblies unless all solid-state device heat sinks are correctly installed.
8. Always connect the test receiver ground lead to the receiver chassis ground before connecting the test receiver positive lead.
Always remove the test receiver ground lead last.
9. *Use with this receiver only the test fixtures specified in this service manual.*

CAUTION: Do not connect the test fixture ground strap to any heatsink in this receiver.

Electrostatically Sensitive (ES) Devices

Some semiconductor (solid state) devices can be damaged easily by static electricity. Such components commonly are called *Electrostatically Sensitive (ES) Devices*. Examples of typical ES devices are integrated circuits and some field-effect

transistors and semiconductor "chip" components. The following techniques should be used to help reduce the incidence of component damage caused by static by static electricity.

1. Immediately before handling any semiconductor component or semiconductor-equipped assembly, drain off any electrostatic charge on your body by touching a known earth ground. Alternatively, obtain and wear a commercially available discharging wrist strap device, which should be removed to prevent potential shock reasons prior to applying power to the unit under test.
2. After removing an electrical assembly equipped with ES devices, place the assembly on a conductive surface such as aluminum foil, to prevent electrostatic charge buildup or exposure of the assembly.
3. Use only a grounded-tip soldering iron to solder or unsolder ES devices.
4. Use only an anti-static type solder removal device. Some solder removal devices not classified as "anti-static" can generate electrical charges sufficient to damage ES devices.
5. Do not use freon-propelled chemicals. These can generate electrical charges sufficient to damage ES devices.
6. Do not remove a replacement ES device from its protective package until immediately before you are ready to install it. (Most replacement ES devices are packaged with leads electrically shorted together by conductive foam, aluminum foil or comparable conductive material).
7. Immediately before removing the protective material from the leads of a replacement ES device, touch the protective material to the chassis or circuit assembly into which the device will be installed.
CAUTION: Be sure no power is applied to the chassis or circuit, and observe all other safety precautions.
8. Minimize bodily motions when handling unpackaged replacement ES devices. (Otherwise harmless motion such as the brushing together of your clothes fabric or the lifting of your foot from a carpeted floor can generate static electricity sufficient to damage an ES device.)

General Soldering Guidelines

1. Use a grounded-tip, low-wattage soldering iron and appropriate tip size and shape that will maintain tip temperature within the range of 500°F to 600°F.
2. Use an appropriate gauge of RMA resin-core solder composed of 60 parts tin/40 parts lead.
3. Keep the soldering iron tip clean and well tinned.
4. Thoroughly clean the surfaces to be soldered. Use a mall wirebrush (0.5 inch, or 1.25cm) brush with a metal handle. Do not use freon-propelled spray-on cleaners.
5. Use the following unsoldering technique
 - a. Allow the soldering iron tip to reach normal temperature. (500°F to 600°F)
 - b. Heat the component lead until the solder melts.
 - c. Quickly draw the melted solder with an anti-static, suction-type solder removal device or with solder braid.
CAUTION: Work quickly to avoid overheating the circuit-board printed foil.
6. Use the following soldering technique.
 - a. Allow the soldering iron tip to reach a normal temperature (500°F to 600°F)
 - b. First, hold the soldering iron tip and solder the strand against the component lead until the solder melts.

- c. Quickly move the soldering iron tip to the junction of the component lead and the printed circuit foil, and hold it there only until the solder flows onto and around both the component lead and the foil.

CAUTION: Work quickly to avoid overheating the circuit board printed foil.

- d. Closely inspect the solder area and remove any excess or splashed solder with a small wire-bristle brush.

IC Remove/Replacement

Some chassis circuit boards have slotted holes (oblong) through which the IC leads are inserted and then bent flat against the circuit foil. When holes are the slotted type, the following technique should be used to remove and replace the IC. When working with boards using the familiar round hole, use the standard technique as outlined in paragraphs 5 and 6 above.

Removal

1. Desolder and straighten each IC lead in one operation by gently prying up on the lead with the soldering iron tip as the solder melts.
2. Draw away the melted solder with an anti-static suction-type solder removal device (or with solder braid) before removing the IC.

Replacement

1. Carefully insert the replacement IC in the circuit board.
2. Carefully bend each IC lead against the circuit foil pad and solder it.
3. Clean the soldered areas with a small wire-bristle brush. (It is not necessary to reapply acrylic coating to the areas).

"Small-Signal" Discrete Transistor

Removal/Replacement

1. Remove the defective transistor by clipping its leads as close as possible to the component body.
2. Bend into a "U" shape the end of each of three leads remaining on the circuit board.
3. Bend into a "U" shape the replacement transistor leads.
4. Connect the replacement transistor leads to the corresponding leads extending from the circuit board and crimp the "U" with long nose pliers to insure metal to metal contact then solder each connection.

Power Output, Transistor Device

Removal/Replacement

1. Heat and remove all solder from around the transistor leads.
2. Remove the heatsink mounting screw (if so equipped).
3. Carefully remove the transistor from the heat sink of the circuit board.
4. Insert new transistor in the circuit board.
5. Solder each transistor lead, and clip off excess lead.
6. Replace heatsink.

Diode Removal/Replacement

1. Remove defective diode by clipping its leads as close as possible to diode body.
2. Bend the two remaining leads perpendicular y to the circuit board.
3. Observing diode polarity, wrap each lead of the new diode around the corresponding lead on the circuit board.
4. Securely crimp each connection and solder it.
5. Inspect (on the circuit board copper side) the solder joints of the two "original" leads. If they are not shiny, reheat them and if necessary, apply additional solder.

Fuse and Conventional Resistor

Removal/Replacement

1. Clip each fuse or resistor lead at top of the circuit board hollow stake.
2. Securely crimp the leads of replacement component around notch at stake top.
3. Solder the connections.

CAUTION: Maintain original spacing between the replaced component and adjacent components and the circuit board to prevent excessive component temperatures.

Circuit Board Foil Repair

Excessive heat applied to the copper foil of any printed circuit board will weaken the adhesive that bonds the foil to the circuit board causing the foil to separate from or "lift-off" the board. The following guidelines and procedures should be followed whenever this condition is encountered.

At IC Connections

To repair a defective copper pattern at IC connections use the following procedure to install a jumper wire on the copper pattern side of the circuit board. (Use this technique only on IC connections).

1. Carefully remove the damaged copper pattern with a sharp knife. (Remove only as much copper as absolutely necessary).
2. Carefully scratch away the solder resist and acrylic coating (if used) from the end of the remaining copper pattern.
3. Bend a small "U" in one end of a small gauge jumper wire and carefully crimp it around the IC pin. Solder the IC connection.
4. Route the jumper wire along the path of the out-away copper pattern and let it overlap the previously scraped end of the good copper pattern. Solder the overlapped area and clip off any excess jumper wire.

At Other Connections

Use the following technique to repair the defective copper pattern at connections other than IC Pins. This technique involves the installation of a jumper wire on the component side of the circuit board.

1. Remove the defective copper pattern with a sharp knife. Remove at least 1/4 inch of copper, to ensure that a hazardous condition will not exist if the jumper wire opens.
2. Trace along the copper pattern from both sides of the pattern break and locate the nearest component that is directly connected to the affected copper pattern.
3. Connect insulated 20-gauge jumper wire from the lead of the nearest component on one side of the pattern break to the lead of the nearest component on the other side. Carefully crimp and solder the connections.

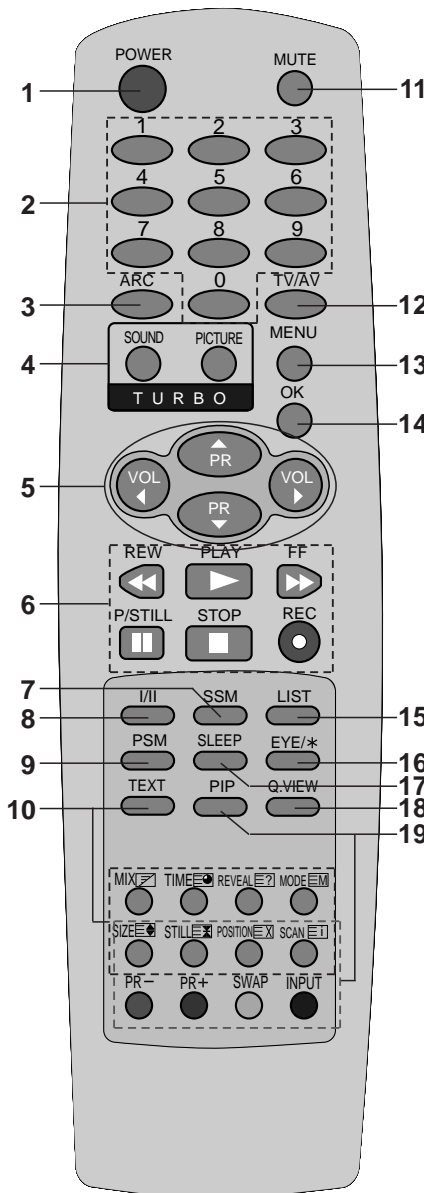
CAUTION: Be sure the insulated jumper wire is dressed so the it does not touch components or sharp edges.

DESCRIPTION OF CONTROLS

All the functions can be controlled with the remote control handset. Some functions can also be adjusted with the buttons on the front panel of the set.

Remote control handset

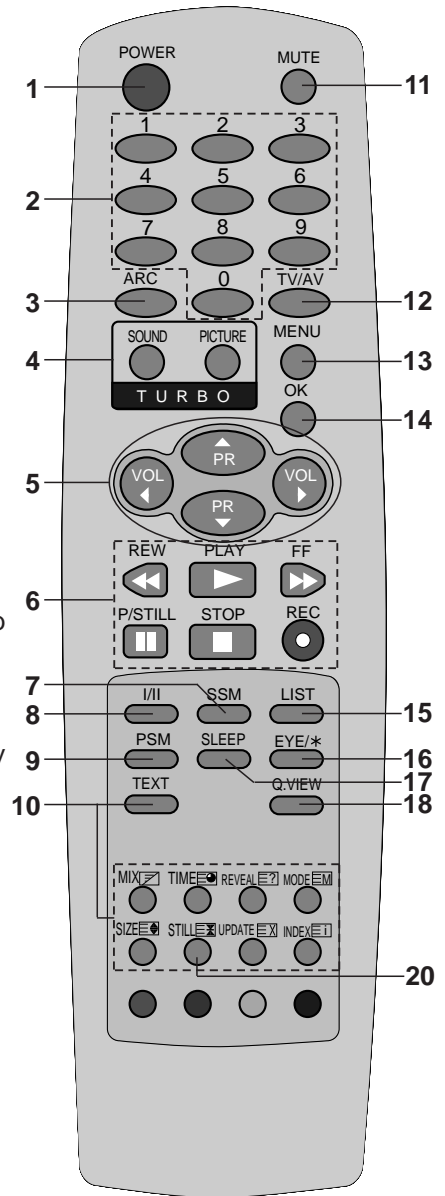
Before you use the remote control handset, please install the batteries. See the next page.



(With PIP)

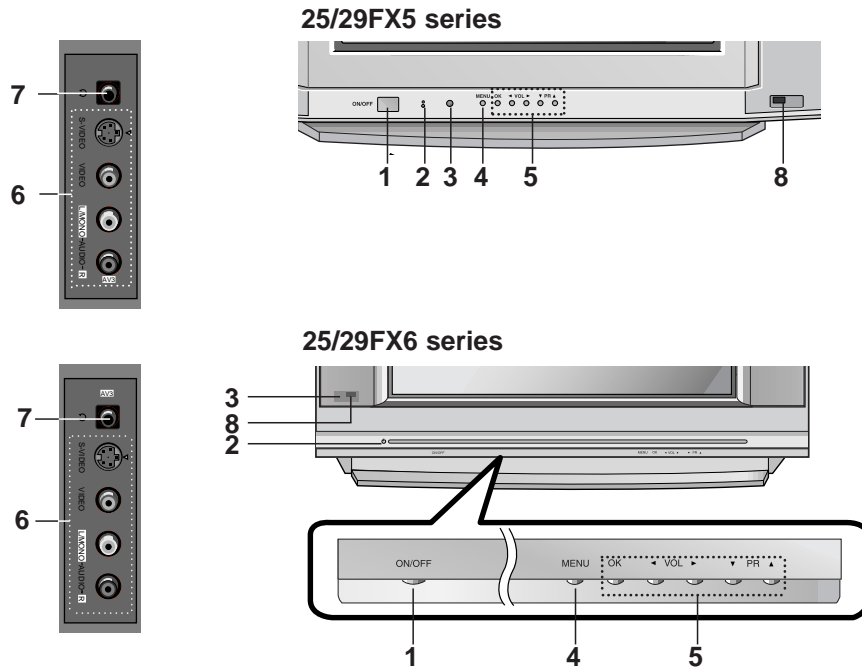
1. **POWER**
switches the set on from standby or off to standby.
2. **NUMBER BUTTONS**
switches the set on from standby or directly select a number.
3. **ARC (Aspect Ratio Control)**
changes the picture format.
4. **TURBO SOUND BUTTON**
selects Turbo sound.
5. **D / E (Programme Up/Down)**
selects a programme or a menu item.
F / G (Volume Down/Up)
adjusts the volume.
6. **VCR BUTTONS**
control a LG video cassette recorder.
7. **SSM (Sound Status Memory)**
recalls your preferred sound setting.
8. **I/II**
selects the language during dual language broadcast.
9. **PSM (Picture Status Memory)**
recalls your preferred picture setting.
10. **TELETEXT BUTTONS (option)**
These buttons are used for teletext.
For further details, see the 'Teletext' section.
11. **MUTE**
switches the sound on or off.
12. **TV/AV**
selects TV or AV mode.
switches the set on from standby.
13. **MENU**
selects a menu.
14. **OK**
accepts your selection or displays the current mode.

- 15. LIST**
displays the programme table.
 - 16. EYE/* (option)**
switches the eye function on or off.
 - 17. SLEEP**
sets the sleep timer.
 - 18. Q.VIEW**
returns to the previously viewed programme.
selects a favourite programme.
 - 19. PIP BUTTONS (option)**
 - PIP**
switches the sub picture on or off.
 - PR +/-**
selects a programme for the sub picture.
 - SWAP**
alternates between main and sub picture.
 - INPUT**
selects the input mode for the sub picture.
 - SIZE**
adjusts the sub picture size.
 - STILL**
freezes motion of the sub picture.
 - POSITION**
relocates the sub picture in clockwise direction.
 - SCAN**
switches on or off the programme scan mode through 12 sub pictures.
 - 20. STILL**
freezes motion of the picture.
- COLOURED BUTTONS :** These buttons are used for teletext (only TELETEXT models) or programme edit.



(Without PIP)

Front panel



Side panel

1. **MAIN POWER (ON/OFF)**
switches the set on or off.
2. **POWER/STANDBY INDICATOR**
illuminates brightly when the set is in standby mode.
dims when the set is switched on.
3. **REMOTE CONTROL SENSOR**
Note : Only use the supplied remote control handset. (When you use others, they'll be not able to function.)
4. **MENU**
selects a menu.
5. **OK**
accepts your selection or displays the current mode.
F / G (Volume Up/Down)
adjusts the volume.
adjusts menu settings.
D / E (Programme Up/Down)
selects a programme or a menu item.
switches the set on from standby.
6. **AUDIO/VIDEO IN SOCKETS (AV3)**
Connect the audio/video out sockets of external equipment to these sockets.
S-VIDEO/AUDIO IN SOCKETS (S-VIDEO) (option)
Connect the video out socket of an S-VIDEO VCR to the **S-VIDEO** socket.
Connect the audio out sockets of the S-VIDEO VCR to the audio sockets as in **AV3**.
7. **HEADPHONE SOCKET (option)**
Connect the headphone plug to this socket.
8. **EYE (option)**
adjusts picture according to the surrounding conditions.

SPECIFICATION

NOTE : Specifications and others are subject to change without notice for improvement.

Scope

This specification can be applied to all the television related to MC-036A Chassis.

Test Condition

- 1) Temperature :20 ± 5°C
- 2) Relative Humidity:65 ± 10%
- 3) Use the parts only designated in B.O.M.,PARTS SPEC.,or drawings.
- 4) Follow each drawing or spec for spec and performance of parts,based upon P/N of B.O.M
- 5) Warm up TV set for more than 20min. before the measurement.

Test and Inspection Method

- 1) performance:Follow the Standard of LG TV test
- 2) Standards of Etc requirement

Safety : IEC60065

EMC : EN55020,EN55013

General Specification

No	Item	Specification	Remark
1	Receiving System	PAL,SECAM-BG PAL,SECAM-DK,PAL I/I SECAM-LL', NTSC M	OPTION NON EU
2	AV Receiving System	1) NTSC M 2) PAL 3) SECAM	
3	Available Channel	1) VHF:E2~E12 2) UHF:E21~E69 3) CATV:S1~S20 4) HYPER:S21~S41	
4	Input Voltage	110-240V~, 50/60 Hz	
5	Market	MIDDLE EAST, AFRICA	
6	Screen Size	Flat 29", Wide 28" / 32"	Flat / Wide
7	Tuning System	FVS 100Program	
8	Operating Environment	1) Temp : 0 ~ 40 deg 2) Humidity: 85% under	
9	Storage Environment	1) Temp : -20 ~ 60 deg 2) Humidity: 85% under	

Feature and Function

No	Item	Specification	Remark
1	Teletext	TOP, FLOF, LIST 8page	Option
2	Remocon	NEC code	
3	AV input	3	Side or, Front: 1, Rear: 2
4	Component input	480I	Option(RT- MODEL)
5	PERI TV connector	Full SCART:1	AV1
6	RGB input	1	AV1
7	2 Carrier stereo	BG,DK	
8	NICAM stereo	BG,I	
9	2 Carrier Dual	BG,DK	
10	NICAM Dual	BG,I	
11	SSC(Split Screen) mode	X	
12	Multi picture display mode(1,2,12 PIP)	PAL. BG.I, DK, M	Option(RT- MODEL)
13	Film mode	X	
14	Noise reduction	X	
15	Progressive scan	X	
16	Motion detection	X	
17	DBS	O	
18	Swivel speaker	X	
19	Digital eye	O	Max.: PSM (Dynamic) Min.: PSM (Mild)

ADJUSTMENT INSTRUCTION

1. Application Object

These instructions are applied to all of the color TV, MC-036A.

2. Notes

- (1) Because this is not a hot chassis, it is not necessary to use an isolation transformer. However, the use of isolation transformer will help protect test instrument.
- (2) Adjustment must be done in the correct order. But the adjustment can be changed by consideration of mass production.
- (3) The adjustment must be performed in the circumstance of $25\pm 5^{\circ}\text{C}$ of temperature and $65\pm 10\%$ of relative humidity if there is no specific designation.
- (4) The input AC voltage of the receiver must keep $220\text{V}\pm 10\%$ in adjusting.
- (5) The receiver must be operated for about 15 minutes prior to the adjustment.

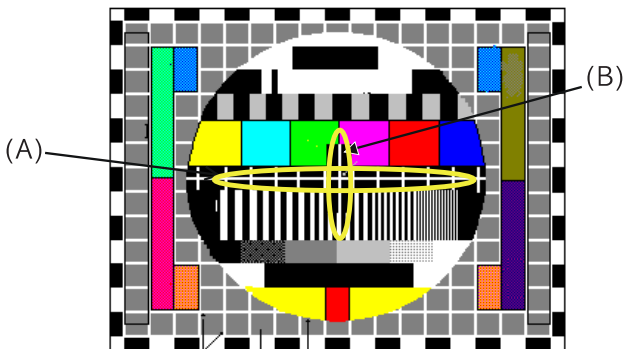
3. Focus adjustment

3-1. Preliminary steps

- (1) Tune the TV set to receive a digital pattern.
(SVC mode: Automatically mode change the STANDARD MODE)

3-2. Adjustment

- (1) Adjust center focus volume of FBT for the best focus of vertical line (B).
- (2) Adjust the upper focus volume of FBT for the best focus of area (A).
- (3) Repeat above step 1) and 2) for the best overall focus.



4. Purity & Convergence adjustment

4-1. Color purity adjustment

- (1) Magnetic room set to destination magnetic and horizontal magnetic set to zero.
- (2) It makes CPT or CABINET enough to demagnetization.
- (3) Self-adjustment: Adjust by input of Green raster signal
Manual-adjustment: Receive the signal of red raster.
(RF: PG50Ch or A/V input: RED pattern)

- (4) Loosen fixed screw of DY and closely to CPT funnel part.
- (5) Check the center of screen that purity magnet of CPT by crossing adjustment. At this time, 4 & 6 pole magnet is located to magnet of nothing.
- (6) Move the DY to make equal red on whole screen and it does not to make the DY by fixed screw after check a simple color of Red/Green/Blue and white raster whether or not it is a pollution of color.
(At this time, take care raster of screen and DY must fixing in the condition which maintains a horizontality.)
- (7) Check the TV set by move direction.

4-2. Convergence adjustment

These adjustments can the best condition of focus after finished purity adjustment.

- (1) Receive the signal of cross hatch that color is black.
- (2) Adjust brightness and luminosity till dot appear 9 ~ 12.
- (3) Open angle of the two tab of 4 pole magnet by isotonic angle and accord with vertical line of red and blue color in the middle of screen.
- (4) Maintain as angle of 3) and rotate the tab to accord with vertical line of Red and Blue color in the middle of screen.
- (5) Open angle of the two tab of 6 pole magnet by isotonic angle and accord with vertical line of Red/Blue and Green.
- (6) Maintain as angle of 5) and rotate the tab to accord with horizontal line. In case of twisted horizontal line, repeat adjustment of 3) ~ 5) remembering the movement of Red/Green/Blue color.
- (7) Move the DY to best condition of convergence and attach the CPT to a rubber-chock for fixed DY.

4-3. Screen voltage adjustment

(1) Preliminary steps

- 1) Turn on the TV set.
- 2) This adjustment should be performed after warming up for more than 15 minutes.

(2) Adjustment

- 1) Adjust in RF non-signal.
- 2) Press the ADJ key of SVC remote controller to make horizontal line.

5. White balance adjustment

This adjustment should be performed after screen adjustment. This adjustment set the self-adjustment rule.

5-1. Test Equipment

- (1) Automatic White balance meter: Incase of self-adjustment
- (2) White balance meter(CRT Color Analyzer, CA-100): 1 EA
- (3) A SVC remote controller.

5-2. Preliminary steps

- (1) Tune the TV set to receive an 100% white pattern.
- (2) This adjustment should be performed after screen voltage adjustment.

5-3. Adjustment

- (1) Press the CH D ,E key to select adjustment item.
- (2) Press the VOL F ,G key to change data.
- (3) Adjustment preliminary steps.
 - a. In items of picture adjustment,adjust until "CONTRASTS" and "BRIGHT" become 45 Ft_L(153Cd/m²).
 - b. Press the SVC key to enter adjustment mode.
 - c. Adjust the Y value of High Light with R-DRIVE and adjust the X value with B-DRIVE until they have the color coordinate of High Light as below.
 - d. In items of picture adjustment,adjust until "CONTRASTS" and "BRIGHT" become 4.5 Ft_L(15.4FT-L).
 - e. Enter the adjustment mode by pressing the SVC key.
 - f. Adjust the Y value of Low Light with R-CUTOFF and adjust the X value with B-CUTOFF until they have the color coordinate of Low Light as below.
 - g.Repeat adjusting until the color coordinate of High and Low Light is satisfied.
 - h.Check the color coordinate of adjusted condition with white balance meter.

Color temperature.	X coordinate	Y coordinate	Remark
13000K	266 ± 8	273 ± 8	Non EU(except model)
9000K	288 ±8	295 ± 8	EU (RE,RL model)

	Item	LG 29" FLAT	LG 32" FLAT	Remark
SERVICE1	CR(0~511)	256	256	LOW LIGHT adjustment
	CG(0~511)	256	256	LOW LIGHT adjustment
	CB(0~511)	256	256	LOW LIGHT adjustment
	WR(0~511)	256	256	HIGH LIGHT adjustment
	WG(0~511)	256	256	HIGH LIGHT adjustment
	WB(0~511)	256	256	HIGH LIGHT adjustment
	SBRI(-255 ~ 254)	0	20	SUB BRIGHT adjustment
	YCDEL	-4	-4	

IIC DATA SETTING

	R AMP	R CUT	B AMP	B CUT	SUB BRIGHT	DATA SAVE
OFFSE DATA	0	3	1	2		
IIC WRITE						
SUB ADD	1C8	1C3	1CA	1C5		
START BIT	8	8	8	8		
STOP BIT	0	0	0	0		
EEPROM						
SUB ADD	30,31	2A,2B	34,35	2E,2F		

SLAVE ADDRESS(WRITE)	SUB BRIGHT CONTROL DATA	SPEED
IC 8A12 EEPROM A0		2

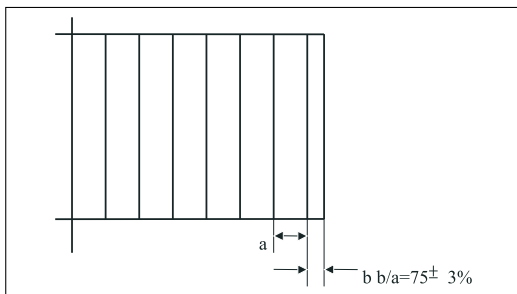
6. Deflection & POP position setting data adjustment.

6-1. Adjustment preparation

- (1) Deflection setting data adjustment is operate by SVC communicator.
- (2) Enter the adjustment mode by pressing SVC key.
- (3) Enter the deflection mode by pressing ADJUST key.
- (4) Use the CH D ,E key to select adjustment item.
- (5) Use the VOL F ,G key to increase/decrease data.
- (6) Tune the TV set to receive PAL-B/G Digital pattern.

6-2. Adjustment

- (1) VL(Vertical Linearity) adjustment:
Adjust the top & bottom size of inner circle to be equal.
- (2) VA (Vertical Amplitude) adjustment:
Adjust so that the circle of a digital circle pattern should be located interval of 6~7mm from the effective screen of the CPT.
- (3) SC (Vertical S correction) adjustment:
Adjust so that all distance between each lattice width of top/center/bottom are to be the same.
- (4) VS (Vertical Shift) adjustment:
Adjust so that the geometric vertical center line is in accord with vertical center line of CPT.
- (5) HS(Horizontal Shift) adjustment:
Adjust so that the geometric horizontal center line is in accord with horizontal center line of CPT.
- (6) EW(East-West Width) adjustment:
Adjust until the outmost left and right lattice of received pattern is accord with 75% of other lattice width.

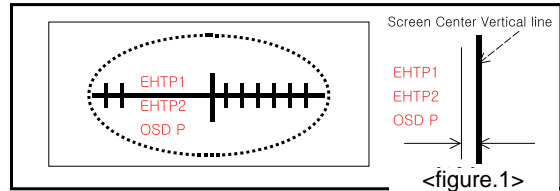


- (7) ET(East-West Trapezium) adjustment:
Adjust to make the length of top horizontal line same with it of the bottom of horizontal line.
- (8) EP (East-West Parabola) adjustment:
Adjust so that middle portion of the outermost left and right vertical line look like parallel with vertical lines of the CPT.
- (9) CRNU(Upper Corner Correction) adjustment:
After finished EP adjustment,adjust vertical line of left-top,right-top of screen to the best straight line.
- (10) CRNL(Lower Corner Correction) adjustment:
After finished EP adjustment,adjust vertical line of left-bottom ,right-bottom of screen to the best straight line.
- (11) BOW adjustment
A standard is not changing the default value.
- (12) Angle adjustment.
When you adjust the angle,adjust correctly raster of left/right screen.
- (13) CRNU6(6' th Order Upper Corner Correction) adjustment
After finished EP adjustment,adjust vertical line of left-top,right-top of screen to the best straight line.
- (14) CRNL6(Lower Corner Correction) adjustment:

After finished EP adjustment,adjust vertical line of left-bottom ,right-bottom of screen to the best straight line.

(15) OSD P (OSD POSITION) adjustment.

Adjust so that the character "2" of "EHTP2" is in accord with right of Screen Center Vertical line after finished (1)~ (14) adjustment. (Refer to <figure.1> and <figure.2>.)



SERVICE 2 standard DATA

Item	Variable range	S/S 29" FLAT	S/S 28" FLAT
VL	-128~127	0	0
VA	-128~127	19	49
SC	-256~255	30	20
VS	-512~511	5	0
HS	-256~255	-198	-180
EW	-128~127	-13	0
ET	-256~255	0	0
EP	-128~127	228	239
CRNU	-128~127	6	2
CRNL	-512~511	6	3
BOW	-512~511	0	0
ANGLE	-128~127	0	0
CRNU6	-128~127	-1	-1
CRNL6	0~2047	-1	-1
EHTTH	0~511	250	250
EHT	-512~511	60	60
EHTV1	-512~511	-61	-61
EHTV2	-512~511	-20	-20
EHTH1	-512~511	-97	-97
EHTH2	0~511	-22	-22
EHT F	-511~512	0	0
EHTP1	-511~512	-20	-20
EHTP2	-15~15	-40	-40
OSD P		0	0

SERVICE 3 standard DATA

Item	PHILIPS 32"FLAT	S/S 29" FLAT	S/S 28" FLAT	
IBRM	413	413	413	
WDRM	128	128	128	
CGAIN	50	50	50	
WGAIN	50	50	50	
MWDR	496	496	496	
BCLTH	85	140	135	
BCLTC	400	400	400	
BCLGA	113	230	200	
BCLC	200	200	200	
SVDEL	7	5	5	
SVD	4	4	4	
SVG	30	30	20	
VBSO	23	23	23	
TML	14	15	14	

SERVICE 4 standard DATA

Item	PHILIPS 32"FLAT	S/S 29" FLAT	S/S 28" FLAT	
FP	20	20	20	
NP	83	83	83	
SP	17	17	17	
S1 VOL	102	102	102	
S2 VOL	102	102	102	
AGC-L	230	230	230	
VPC-L	0	0	0	
M-STR	45	45	45	
M-HMC	25	25	25	
M-HP	9	9	9	
M-LP	11	11	11	
M-LIM	252	252	252	

29" Model:

Adjustment must adjust to the N50Hz(Only PAL mode).
W50Hz,N60Hz and W60Hz need not adjustments.(Only 29" model)

28"/32" WIDE Model:

14:9,4:3 MODE H-SH(H-SHIFT) adjustment addition.

Adjust "H-SHIFT" of 14:9 and 4:3 by 50Hz.

* Caution: Adjustment of 50 Hz is 16:9's standard format.
When the adjustment is 50Hz wide mode, you must be done re-check.

At this time, ZOOM1 and ZOOM2 Mode need not adjustments. Because it can automatically correct in 16:9 mode.

When you want to re-adjust after deflection adjustment, adjustment is finished after always re-adjustment.

Screen OSD FONT status and adjustment in H-Shift ARC SVC adjustment.

No.	ARC MODE	SVC OSD FONT(50Hz,PAL)	H-SHIFT
1	16:9	50W	Adjustment
2	14:9	50 149	Adjustment
3	ZOOM1	50 Z1	Adjustment X
4	ZOOM2	50 Z2	Adjustment X
5	4:3	50 N	Adjustment

Deflection adjustment standard DATA

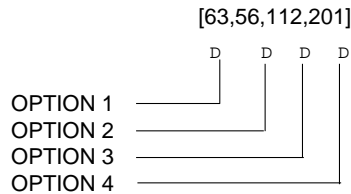
Item	Variable range	PAL 100Hz	480I
VL	-128~127	0	0
VA	-128~127	10	10
SC	-128~127	20	20
VS	-256~255	0	0
HS	-512~511	-152	-152
EW	-256~255	5	5
ET	-128~127	0	0
EP	-256~255	234	234
CRNU	-128~127	4	4
CRNL	-128~127	5	5
BOW	-512~511	2	2
ANGLE	-512~511	1	1
CRNU6	-128~127	-1	-1
CRNL6	-128~127	-1	-1
PFGHE	0~1024	0	0
PFGHB	0~1024	0	0
EHTTH	0~2047	250	250
EHTS	0~511	60	60
EHTV1	-512~511	-61	-61
EHTV2	-512~511	-20	-20
EHTH1	-512~511	-97	-97
EHTH2	-512~511	-22	-22
EHT F	0~511	0	0
EHTP1	-511~512	-20	-20
EHTP2	-511~512	-40	-40
OSD P	-15~15	0	0

Adjust in PAL100Hz and PAL50Hz,NTSC60Hz and 480I needed not adjustment.

7. OPTION Adjustment

7-1. Preparation for Adjustment

- 1) This option adjustment decides function in accordance with model.
Press the SVC TX adjustment button(IN-START button) at SVC mode,then adjust the option at OPTION 1,2,3,4 mode.
- 2) Mark the option adjustment data like [111,11,111,11] in BOM.



◦ Mark of BOM

LEVEL	PART NO.	SPECIFICATION	DESCRIPTION
1.	3141VMN382A	MAIN[63.56.112.201]	CHASSIS ASSY

The OPTION 1 data is 113,OPTION 2 data is 63,the
oOPTION 3 data is 112,the OPTION 4 data is 201 in this
model.

7-2. Adjustment Method

- 1) Input data directly by the buttons corresponded with OPTION1 ??(0~63), OPTION2 ??(0~63), OPTION3 ???(0~127).
- 2) Option4???(0~116) controls corresponding lines directly relate with OSD and TXT LANG.
- 3) Select each OPTION function by the CH Up/Down button and then set up each OPTION by the VOL Up/Down button.

Table.1 OPTION 1 Function

Option	Code	Function	Remark
200PR	0	100 PROGRAM SAVE	
	1	200 PROGRAM SAVE	
TSEAR	0	WITHOUT TURBO SEARCH FUNCTION	WL/CL model
	1	WITH TURBO SEARCH FUNCTION	CT/CE/WT/WE model
I II SV	0	NO SAVE DUAL SOUND CONDITION	EU(WE/WL/CE/C model)
	1	SAVE DUAL SOUND CONDITION	NON-EU (WT/CT model)
TOP	0	FLOP TEXT	Without top text
	1	TOP TEXT	
EYE	0	WITHOUT EYE	
	1	WITH EYE	
A2 ST	0	FM STEREO/DUAL NON ACTIVE	
	1	NICAM AND FM STEREO/DUAL	
SYS	0	BG//DK	
	1	BG/L	
	2	BG//DK/M	
	3	RESERVED	

Table 2. OPTION 2 Function

Option	Code	Function	Remark
ACMS	0	Without ACMS function	Australia
	1	With ACMS function	
VOL	0	Normal volume curve	EU
	1	Rushed volume curve	NON EU
HPHON	0	Without headphone	
	1	With headphone	
DVD	0	Without DVD input	
	1	With DVD input	
SAV3	0	AV3 Y&C not coresspondence	
	1	AV3 Y&C coresspondence	
WOOF	0	Without woofer	
	1	With woofer	
RESE1	0		NON USED
	1		
AV SV	0	No save last AV	
	1	Last AV save	

Table. 3 OPTION 3 Function

Option	Code	Function	Remark
WIDE	0	4:3 TV	
	1	16:9 TV	
TEXT	0	WITHOUT TEXT	
	1	WITH TEXT	
CH+AU	0	WITHOUT D/K CHINA or BB SYSTEM	
	1	WITH D/K CHINA or BB SYSTEM	
HEDV	0	WITHOUT HIGH DEVIATION	High deviation
	1	WITH HIGH DEVIATION	
DOLBY	0	WITHOUT DOLBY VIRTUAL	
	1	WITH DOLBY VIRTUAL	
RESE3			NON USED
HOTEL	0	WITHOUT HOTEL FUNCTION	
	1	WITH HOTEL FUNCTION	
RESE2			NON USED

Table 4. OPTION 4 Function

State	Language	Function
LANG	0:ENG Only	English
	1:EU 5EA	English/German/French/Italy/Spanish
	2:EU ETC	Netherlands/Sweden/Norway/Denmark/Finland/Portugal/Rumania/Poland
		/Hungary/Czech/Russia
	3:GREECE	
LANG (NON EU)	0:ENG Only	English
	1:PARSI	English/Farsi
	2:ARAB URDU	English/French/Arab/Urdu
T-LAN	0:West EU	English/French/Swedish/Czech/German/Spanish/Italian
	1:East EU1	Polish/French/Swedish/Czech/German/Slovenian/Italian/Rumanian
	2:Turkey EU1	English/French/Swedish/Turkish/German/Spanish/Italian
	3:East EU2	English/Czech/Hungarian/Serbian/German/Polish/Turkish/Rumanian
	4:Cyrillic 1	Polish/Russia/Estonian/Swedish
	5:Cyrillic 2	Polish/Russia/Swedish/Czech/Estonian
	6:Cyrillic 3	English/Russia/Estonian/Czech/German/Ukrainian
	7:Turkey/Greek 1	English/French/Swedish/Turkish/German/Spanish/Italian/Greek
	8:Turkey/Greek 2	English/Turkish/German/Turkish/Greek
	9:Turkey/Greek 3	English/French/Swedish/Turkish/German/Spanish/Italian/Greek
	10:Arab/France	English/French/English/Arabic
	11:Arab/English	English/French/Turkish/Arabic
	12:Arab/Hebrew 1	Hebrew/Arabic
	13:Arab/Hebrew 2	English/French/Hebrew/Arabic
	14:Farsi/English	English/French/Turkish/Farsi
	15:Farsi/France	French/Turkish/Farsi
16:Farsi all		
MAX V		Max Volume

8. Sound Pre scaler

Don't adjust mass-production. Because this value of SVC setting is set to come up to standard. Only This standard is for reference.

In case of Phone jack is over 1EA in AV1 & AV2, apply to Phone standard.

- Audio out level: 500mVrms at 100% modulation ratio.

In case of both of AV1 & AV2 is Scart jack, apply to Scart jack standard.

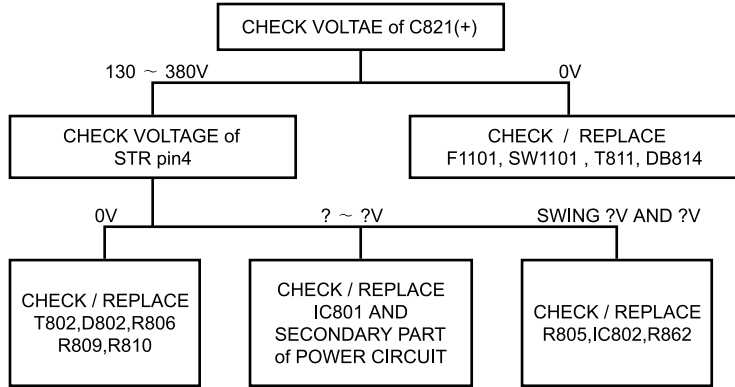
- Audio out level 500Vrms at 54% modulation ratio

* MSP3410 Pre-scaler setting value.

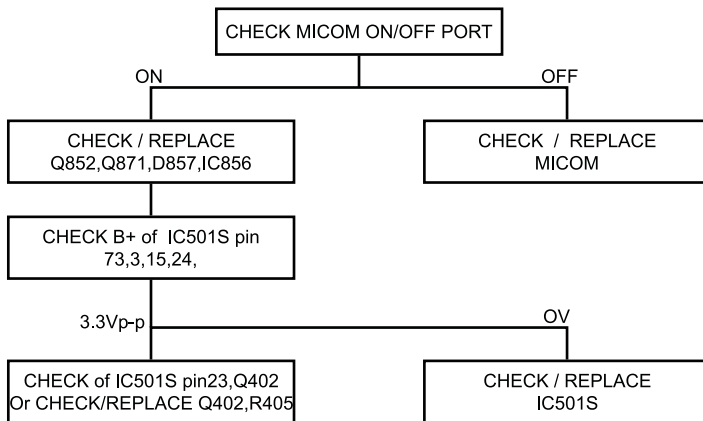
Item	Description	DATA
FP	FM Pre-scaler	21
NP	Nicam Pre-scaler	90
SP	Scart Pre-scaler	20
S1 vol	Scart1 Pre-scaler	102
S2 vol	Scart2 Pre-scaler	102
VPC-L	VPC LEVEL	0
M-STR	EFFECT STRENGTH	45
M-HMC	HARMONIC CONTENT	25
M-HP	HIGH PASS CENTER FREQUENCY	9
M-LP	LOW PASS CENTER FREQUENCY	11
M-LIM	AMPLITUDE LIMIT	252

TROUBLE SHOOTING

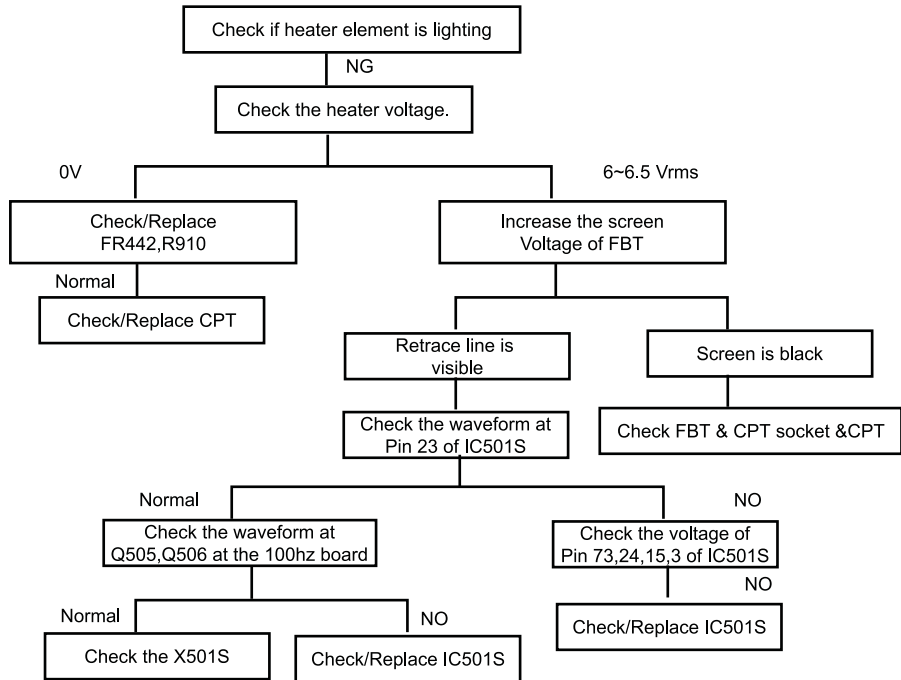
1. NO POWER (NOT WORKING SMPS)



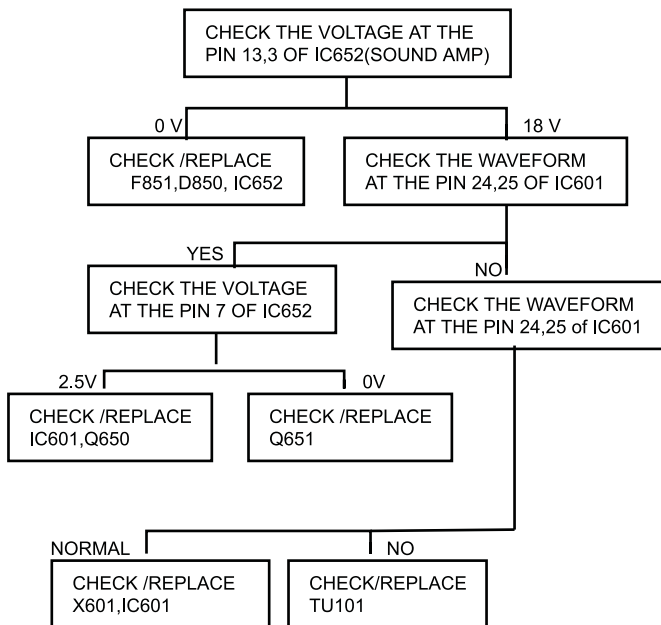
2. NO POWER BUT SMPS WORKING



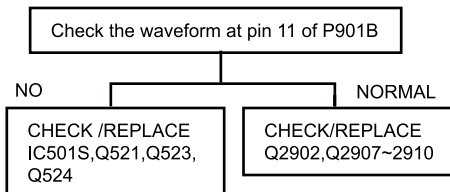
3. NO RASTER & PICTURE (H-OUT OK)



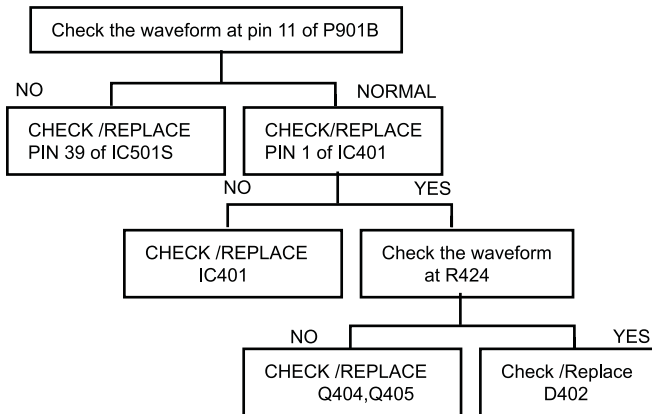
4. NO SOUND(PICTURE OK)



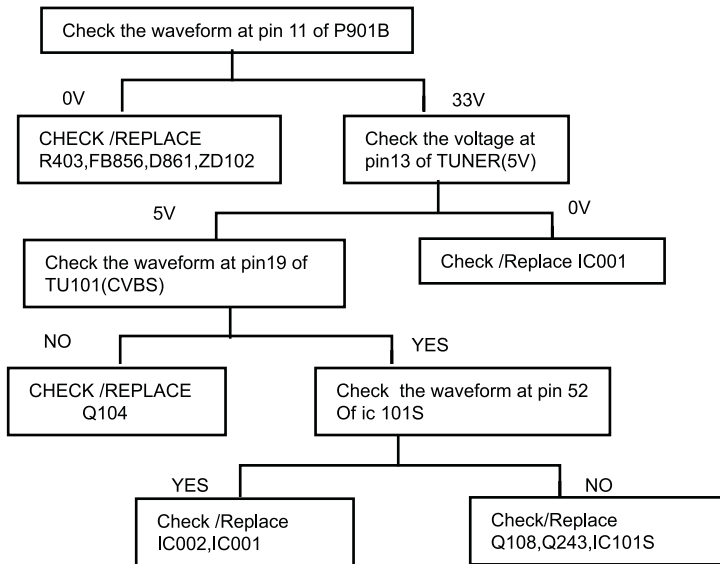
VM DON T WORKING



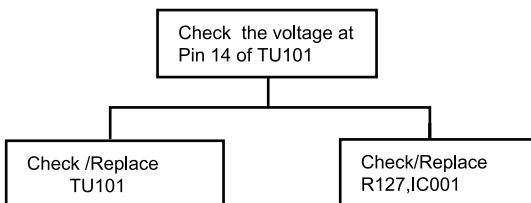
5.PIN CUSHION DISTORTION



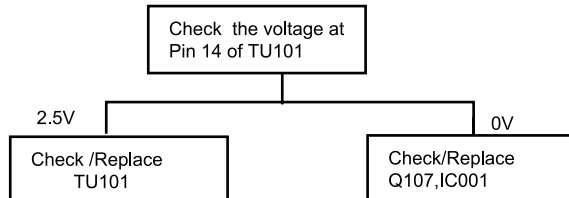
6.DON T CATCH CHANNEL(MAIN)



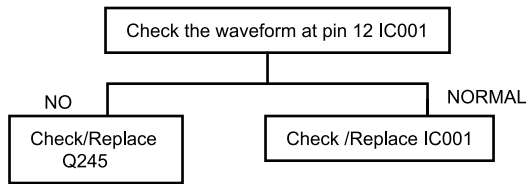
7.DON T CATCH NTSC-M(OPTION)



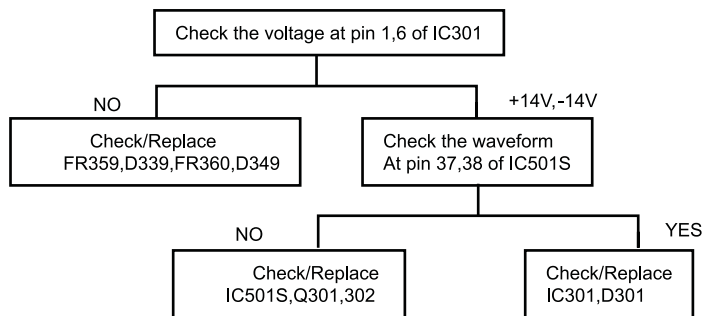
8.DON T CATCH SECAM-L(OPTION)



9.NO TELETEXT

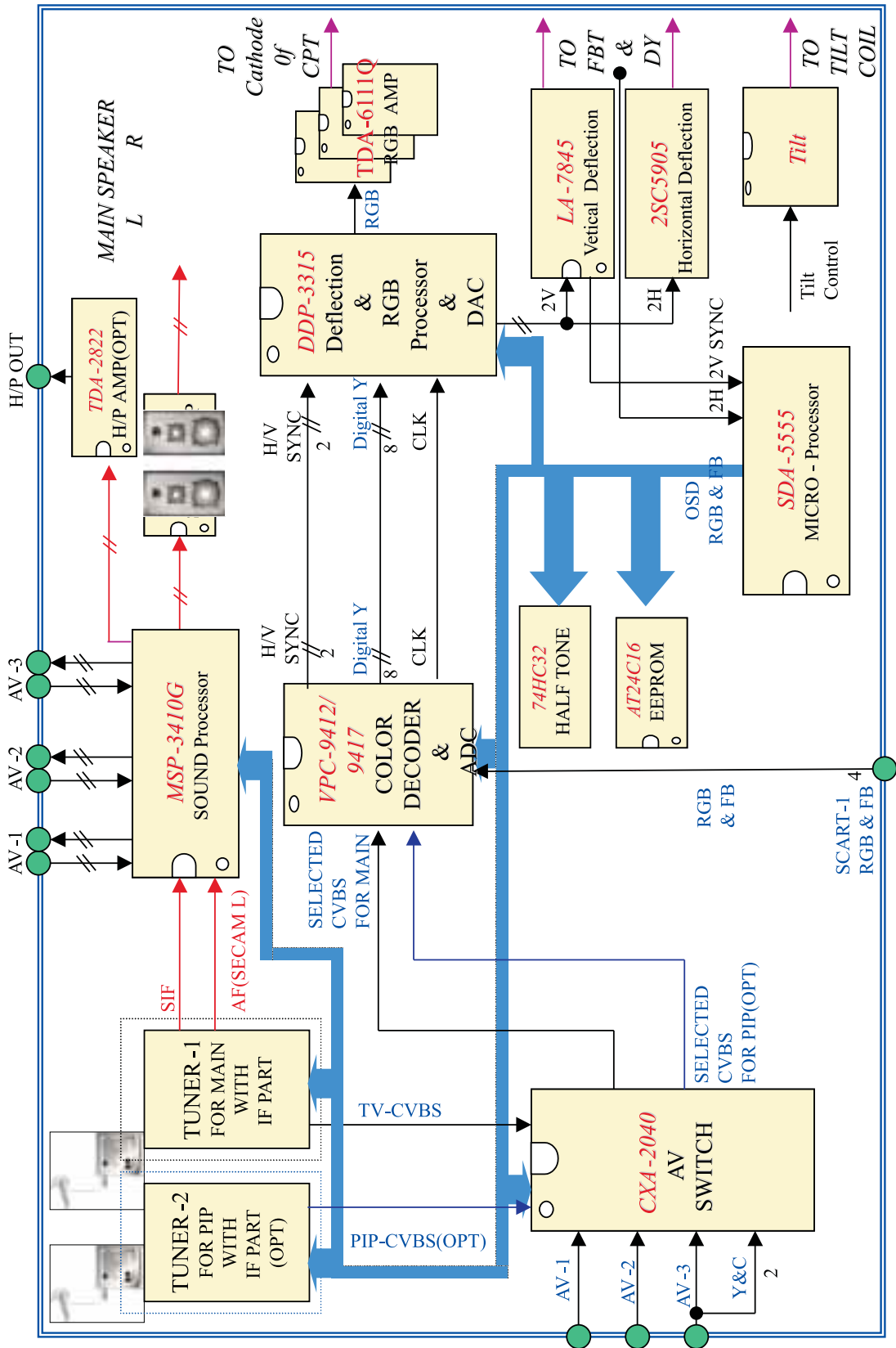


10.NO VERTICAL DEFLECTION

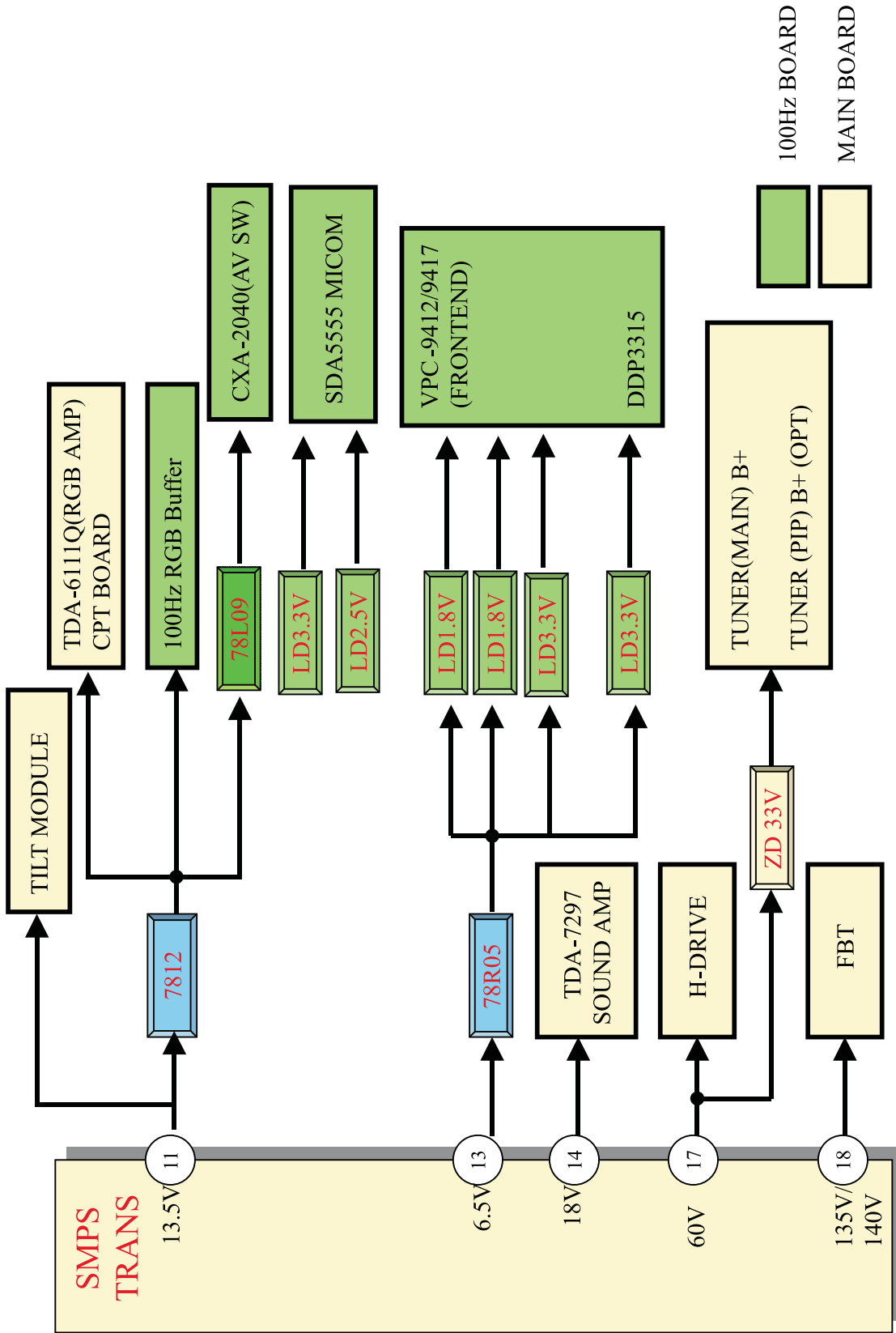


1.MAIN

BLOCK DIAGRAM



2.SMPS



MEMO

EXPLODED VIEW PARTS LIST

No.	PART NO.	DESCRIPTION
105	4980V00566A	SUPPORTER, ABS, HF-380 CPT
△ 112	6335V29034B	CPT ASSEMBLY, A68QCU970XV70LGF L(+0.50G) 0G DOUBLE FOCUS TINT
	6335V29034E	CPT ASSEMBLY, A68QCU970XV70KGF K(+0.20G) 0G
	6335V29028K	CPT ASSEMBLY, A68QCU270X V3ULGD U(-0.30G) 0.25G DOUBLE TINT ITC
120	120-C77S	SPEAKER,FULLRANGE N2250C-6583-10 8OHM 12/20W 82DB OTHERS 58*126
△ 150	6140VC2006D	COIL,DEGAUSSING AL 55TURN 16OHM 0.65PIE 3270MM 26" 2007F+D07L
△ 170	170-844K	CPT EARTH, 29" 98T 4LUG LEAD SET SPRING(50MM)
△ 174	174-322E	POWER CORD, POWER W/FILTER L=400(179B)
300	3091V00851E	CABINET ASSEMBLY, 29FX5RNB-TK STEREO E_PHONE LGESY -LGE GF
	3091V00851J	CABINET ASSEMBLY, 29FX5RNX-TK STEREO E_PHONE (WITHOUT EYE)
310	5020V01113A	BUTTON, CONTROL 29FX5 ABS 6KEY LGESY LOCAL
320	320-062E	SPRING, KNOB
330	5020V01114A	BUTTON, POWER 29FX5 ABS 1KEY LGESY LOCAL
400	3809V00609B	BACK COVER ASSEMBLY, 29FX5 DVD(1PHONE) LGESY LOCAL
	3809V00609D	BACK COVER ASSEMBLY, 29FX5RNB-ZK DVD(1PHONE) SY TOOL
501	3210V00303A	FRAME, MAIN HIPS RT-29FX6 LGESY LOCAL
	3210V00303B	FRAME, MAIN HIPS RT-29FX6 LGESY LOCAL (C/SKD)
503	4811900001A	BRACKET ASSEMBLY, AV 29FX60 MC036A REAR AV
	4811900001C	BRACKET ASSEMBLY, AV 29FX5,29FX6 MC036A REAR AV(FOR CIS)
510	6871VSMZ52L	PWB(PCB) ASSEMBLY,SUB CPT MC036A SY-SKD
520	68719MM136G	PWB(PCB) ASSEMBLY,MAIN M.I 29FX5RNB-TK KMALLEY SY-UNITE ARAB SET
	68719MM136K	PWB(PCB) ASSEMBLY,MAIN M.I 29FX5RNX-TK QDRLLBK SY-KIEV SKD
	68719MM136M	PWB(PCB) ASSEMBLY,MAIN M.I MC036A 29FX5RJ-TK QFBLLBK SY
530	68719SM336N	PWB(PCB) ASSEMBLY,SUB M.I MC036A 29FX5RNB SY-SKD POWER/CONT
550	68719SM236G	PWB(PCB) ASSEMBLY,SUB 29FX5RNB KMALLEY SET 100HZ SY-EXPORT
	68719SM236K	PWB(PCB) ASSEMBLY,SUB M.I 29FX5RNX-TK QDRLLBK SKD 100HZ
	68719SM236M	PWB(PCB) ASSEMBLY,SUB M.I 29FX5RJ-TK QFBLLBK SKD 100HZ SY-KIOTA
560	6871VSM845C	PWB(PCB) ASSEMBLY,MAIN SUB MC-036A CURRENT HARMONICS
600	68719SM336L	PWB(PCB) ASSEMBLY,SUB M.I MC036A 29FB23 SY-SKD SIDE AV
700	0IGL120104A	IC,LG SEMICONDUCTOR CDS SENSOR MODULE(P1201-04)
913	332-229H	SCREW,DRAWING HEXAGON HEAD
943	1PTF0403116	SCREW TAP TITE(P),TRUSS HEAD + D4.0 L16.0 MSWR3/FZB

REPLACEMENT PARTS LIST

LOCA. NO	PART NO	DESCRIPTION	LOCA. NO	PART NO	DESCRIPTION
IC					
IC002	0IAL241610B	AT24C16A-10PI-2.7 8PIN DIP ST EEPROM	Q2902	0TR319809AA	KTC3198(KTC1815) KEC TP TO92 50V 150MA
IC003	0IPH743200A	74HC32D 14SOP TP QUAD 2-INPUT OR GATE	Q2907	0TR126609AA	KTA1266-Y(KTA1015) TP KEC TO92 PNP
IC012	0IFA754207A	KA75420ZTA(KA7542ZTA) 3P,TO-92 TP 4.2V	Q2908	0TR319809AA	KTC3198(KTC1815) KEC TP TO92 50V 150MA
IC013	0IFA752700A	KA75270Z 3 TP RE-SET IC MC-007	Q301	0TR150400BA	CHIP 2SA1504S(ASY) BK KEC
IC014	0IMCRUK002B	S78DL33L AUK 3P, TO-92L TP 3.3V REGU.	Q301	0TR945009AA	KSC945C-Y TP TO92 NPN EPI. SILICON TR
IC015	0IMCRUK003A	S5225M AUK 5SOP, SOT-25 R/TP 150MA	Q302	0TR150400BA	CHIP 2SA1504S(ASY) BK KEC
IC101S	0IMCRMN022B	VSP9417B VK C4 MICRONAS 80P MQFP R/TP	Q302	0TR733009AA	KSA733C-Y TP TO92 PNP
IC102	0IMCRSG011A	LD1086V18 3DIP,TO-220 ST 1.5A-L/DROP REG.	Q308	0TR945009AA	KSC945C-Y TP TO92 NPN EPI. SILICON TR
IC102S	0ISO204000A	CXA2040AQ 32P,QFP BK IIC BUS VIDEO S/W	Q401	0TF200000AA	IRFIBC20G BK I.R 600V
IC103	0IMCRSG011A	LD1086V18 3DIP,TO-220 ST 1.5A-L/DROP REG.	Q404	0TR127509AC	KTA TP KEC - 1275-Y (KTA1013)
IC104	0ISG111733B	LD1117V33C 3SIP ST REGULATOR -	Q505	0TR387500AA	CHIP 2SC3875S(ALY) BK KEC
IC401	0IKE455800E	KIA4558 8DIP DUAL OP AMP	Q506	0TR387500AA	CHIP 2SC3875S(ALY) BK KEC
IC501S	0IMCRMN024A	DDP3315C QA G3 MICRONAS 80P QFP R/TP IC	Q511	0TR387500AA	CHIP 2SC3875S(ALY) BK KEC
IC503	0IKE780900M	KIA7809API TO220 ST 3P 9V REGULATOR	Q512	0TR387500AA	CHIP 2SC3875S(ALY) BK KEC
IC504	0ISG111733B	LD1117V33C 3SIP ST REGULATOR	Q513	0TR127009AA	KTA1270-Y(KTA562TM) TP KEC TO92 PNP
IC601	0IMCRMN011C	MSP3410G PO B8 V3 MICRONAS 52P DIP	Q514	0TR387500AA	CHIP 2SC3875S(ALY) BK KEC
IC601	0ISG282200A	TDA2822M 8D DUAL AUDIO AMP(1W)	Q515	0TR387500AA	CHIP 2SC3875S(ALY) BK KEC
IC650	0IFA754207A	KA75420ZTA(KA7542ZTA) 3P,TO-92 TP 4.2V	Q516	0TR127009AA	KTA1270-Y(KTA562TM) TP KEC TO92 PNP
IC802	0IL1817000G	LTV817M-VB 4P,DIP BK PHOTO COUPLER	Q517	0TR387500AA	CHIP 2SC3875S(ALY) BK KEC
IC803	0IL1817000G	LTV817M-VB 4P,DIP BK PHOTO COUPLER	Q518	0TR387500AA	CHIP 2SC3875S(ALY) BK KEC
IC856	0ISK135000A	SE135N(LF12) 3P 135V ERROR AMP	Q520	0TR127009AA	KTA1270-Y(KTA562TM) TP KEC TO92 PNP
Q011	0IFA270000A	2N7000TA TO-92, 3P TP LEVEL SHIFT 60V/0.2A	Q521	0TR387500AA	CHIP 2SC3875S(ALY) BK KEC
Q012	0IFA270000A	2N7000TA TO-92, 3P TP LEVEL SHIFT 60V/0.2A	Q523	0TR387500AA	CHIP 2SC3875S(ALY) BK KEC
TRANSISTOR			Q524	0TR127009AA	KTA1270-Y(KTA562TM) TP KEC TO92 PNP
IC2002	0TR165900AC	KTA1659A-Y TO-220IS BK KEC	Q601	0TR733009AA	KSA733C-Y TP TO92 PNP
Q015	0TR387500AA	CHIP 2SC3875S(ALY) BK KEC	Q602	0TR733009AA	KSA733C-Y TP TO92 PNP
Q016	0TR387500AA	CHIP 2SC3875S(ALY) BK KEC	Q651	0TR945009AA	KSC945C-Y TP TO92 NPN EPI. SILICON TR
Q018	0TR387500AA	CHIP 2SC3875S(ALY) BK KEC	Q854	0TR322709AA	KTC3227 TP KEYC, (KTC1627A)
Q101	0TR733009AA	KSA733C-Y TP TO92 PNP	Q855	0TR421009AB	BF421 KEC REEL TAPING TO92 -300V -0.05A
Q103	0TR945009AA	KSC945C-Y TP TO92 NPN EPI. SILICON TR	Q856	0TR102009AB	KRC102M,TP(KRC1202),KEC
Q104	0TR127009AA	KTA1270-Y(KTA562TM) TP KEC TO92 PNP	Q857	0TR945009AA	KSC945C-Y TP TO92 NPN EPI. SILICON TR
Q105	0TR945009AA	KSC945C-Y TP TO92 NPN EPI. SILICON TR	Q871	0TR945009AA	KSC945C-Y TP TO92 NPN EPI. SILICON TR
Q108	0TR945009AA	KSC945C-Y TP TO92 NPN EPI. SILICON TR	Q900	0TR127109AA	KTA1271Y (KTA950) KEC TP TO92 50V 100MA
Q1101	0TR319809AA	KTC3198(KTC1815) KEC TP TO92 50V 150MA	T401	6170VC0002A	H-DRIVE EER-2619
Q111	0TR945009AA	KSC945C-Y TP TO92 NPN EPI. SILICON TR	T403	151-E06A	EER2834 0UH
Q161	0TR945009AA	KSC945C-Y TP TO92 NPN EPI. SILICON TR	T801	6170VZ0008A	TS4841 30500UH REACTOR TRANS
Q162	0TR733009AA	KSA733C-Y TP TO92 PNP	T802	6170VMCA16T	EE5555 390UH 0.25PHY,MC-021A
Q163	0TR945009AA	KSC945C-Y TP TO92 NPN EPI. SILICON TR	DIODE		
Q164	0TR733009AA	KSA733C-Y TP TO92 PNP	D011	0DD414809ED	1N4148 TP
Q165	0TR945009AA	KSC945C-Y TP TO92 NPN EPI. SILICON TR	D160	0DD414809ED	1N4148 TP
Q166	0TR733009AA	KSA733C-Y TP TO92 PNP	D161	0DD414809ED	1N4148 TP
Q167	0TR733009AA	KSA733C-Y TP TO92 PNP	D2901	0DD414809ED	1N4148 TP
Q168	0TR945009AA	KSC945C-Y TP TO92 NPN EPI. SILICON TR	D2902	0DD414809ED	1N4148 TP
Q200	0TR733009AA	KSA733C-Y TP TO92 PNP	D2903	0DD414809ED	1N4148 TP
Q240	0TR387500AA	CHIP 2SC3875S(ALY) BK KEC	D2906	0DD414809ED	1N4148 TP
Q242	0TR387500AA	CHIP 2SC3875S(ALY) BK KEC	D2907	0DD414809ED	1N4148 TP
Q243	0TR387500AA	CHIP 2SC3875S(ALY) BK KEC	D2909	0DR150009EA	RGP15J TP DO15 600V 1.5A 50A 250NSEC 5UA
Q244	0TR387500AA	CHIP 2SC3875S(ALY) BK KEC	D2910	0DR150009EA	RGP15J TP DO15 600V 1.5A 50A 250NSEC 5UA
Q245	0TR387500AA	CHIP 2SC3875S(ALY) BK KEC	D2911	0DD414809ED	1N4148 TP
Q246	0TR387500AA	CHIP 2SC3875S(ALY) BK KEC	D301	0DD200009AF	RU2M V(1) TP R-TMD 400V 1.1A 20A 0.4US 10UA
			D339	0DD200009AF	RU2M V(1) TP R-TMD 400V 1.1A 20A 0.4US 10UA
			D349	0DD200009AF	RU2M V(1) TP R-TMD 400V 1.1A 20A 0.4US 10UA

For Capacitor & Resistors, the characters at 2nd and 3rd digit in the P/No. means as follows;	CC, CX, CK, CN : Ceramic CQ : Polyester CE : Electrolytic	RD : Carbon Film RS : Metal Oxide Film RN : Metal Film RF : Fusible
--	---	--

LOCA. NO	PART NO	DESCRIPTION
D351	0DD414809ED	1N4148 TP
D410	0DR150009EA	RGP15J TP DO15 600V 1.5A 50A 250NSEC 5UA
D413	0DR150009AB	RGP15G TP DO15 400V 1.5A -
D414	0DR100009GA	RU1DGF TP DO41 600V 1.0A 30A 75NSEC 10UA
D425	0DD414809ED	1N4148 TP
D505	0DD414809ED	1N4148 TP
D506	0DD414809ED	1N4148 TP
D507	0DD414809ED	1N4148 TP
D802	0DR060009AA	TVR06J TP DO41 600V 0.6A
D803	0DR100009FA	EU1DGR TP DO41 200V 1.0A 30A 50NSEC
D804	0DD414809ED	1N4148 TP
D857	0DD414809ED	1N4148 TP
D858	0DD120000BB	FML-G12S SANKEN
D861	0DR060009AA	TVR06J TP DO41 600V 0.6A
D900	0DR060009AA	TVR06J TP DO41 600V 0.6A
D903	0DR060009AA	TVR06J TP DO41 600V 0.6A
D909	0DR060009AA	TVR06J TP DO41 600V 0.6A
ZD012	0DZ910009BD	GDZJ9.1B TP DO34 0.5W 9.1V
ZD101	0DZ330009BA	ZENER HZT33 TAPING
ZD102	0DZ330009BA	ZENER HZT33 TAPING
ZD1201	0DZ620009AK	GDZJ6.2B TP DO34 0.5W 6.2V
ZD1202	0DZ620009AK	GDZJ6.2B TP DO34 0.5W 6.2V
ZD1205	0DZ620009AK	GDZJ6.2B TP DO34 0.5W 6.2V
ZD1206	0DZ620009AK	GDZJ6.2B TP DO34 0.5W 6.2V
ZD401	0DZ510009AK	GDZJ5.1B TP DO34 0.5W 5.1V
ZD601	0DZ820009BF	GDZJ8.2B TP DO34 0.5W 8.2V
ZD650	0DZ910009BD	GDZJ9.1B TP DO34 0.5W 9.1V

CAPACITOR

C003	0CE106DF618	10UF STD 16V M FL TP5
C010	0CE226DD618	22UF STD 10V 20% FL TP 5
C011	0CE226DD618	22UF STD 10V 20% FL TP 5
C012	0CQ1041N509	0.1UF D 100V 10% PE TP5
C013	0CE477DD618	470UF STD 10V 20% FL TP 5
C015	0CE106DF618	10UF STD 16V M FL TP5
C020	0CE476DD618	47UF STD 10V 20% FL TP 5
C021	0CE226DD618	22UF STD 10V 20% FL TP 5
C024	0CE226DD618	22UF STD 10V 20% FL TP 5
C030	0CE226DD618	22UF STD 10V 20% FL TP 5
C031	0CE226DD618	22UF STD 10V 20% FL TP 5
C036	0CE476DD618	47UF STD 10V 20% FL TP 5
C101	0CE106DF618	10UF STD 16V M FL TP5
C102	0CE106DK618	10UF STD 50V M FL TP5
C103	0CN1030F679	10000PF D 16V 20% X5R TA52
C103	181-007G	MPE ECQ-V1H334JL3(TR), 50V 0.33UF
C104	0CE476DD618	47UF STD 10V 20% FL TP 5
C105	0CN1030F679	10000PF D 16V 20% X5R TA52
C106	0CN1030F679	10000PF D 16V 20% X5R TA52
C108	0CN1030F679	10000PF D 16V 20% X5R TA52
C109	0CE475DK618	4.7UF STD 50V 20% FL TP 5
C1103	0CN1030F679	10000PF D 16V 20% X5R TA52
C1104	0CE476DD618	47UF STD 10V 20% FL TP 5

LOCA. NO	PART NO	DESCRIPTION
C1130	0CQZVBK002D	A.C 275V 0.47UF K (S=22.5)
C114	0CE476DD618	47UF STD 10V 20% FL TP 5
C115	0CX4700K409	47PF D 50V 5% SL TA52
C116	0CX4700K409	47PF D 50V 5% SL TA52
C117	0CE227DD618	220UF STD 10V M FL TP5
C118	0CX4700K409	47PF D 50V 5% SL TA52
C119	0CX4700K409	47PF D 50V 5% SL TA52
C1203	0CN2210K519	220PF D 50V 10% B(Y5P) TA52
C1204	0CN1040K949	0.1UF D 50V 80%,-20% F(Y5V) TA52
C1205	0CN2210K519	220PF D 50V 10% B(Y5P) TA52
C1206	0CN4710K519	470PF D 50V 10% B(Y5P) TA52
C1207	0CN4710K519	470PF D 50V 10% B(Y5P) TA52
C1208	0CN2210K519	220PF D 50V 10% B(Y5P) TA52
C1209	0CE475DK618	4.7UF STD 50V 20% FL TP 5
C121	0CE107DD618	100UF STD 10V M FL TP5
C121	0CE225DK618	2.2UF STD 50V 20% FL TP 5
C1210	0CE475DK618	4.7UF STD 50V 20% FL TP 5
C1211	0CN2210K519	220PF D 50V 10% B(Y5P) TA52
C1212	0CE475DK618	4.7UF STD 50V 20% FL TP 5
C1213	0CE475DK618	4.7UF STD 50V 20% FL TP 5
C123	0CN1030F679	10000PF D 16V 20% X5R TA52
C124	0CE106DF618	10UF STD 16V M FL TP5
C125	0CE108DD618	1000UF STD 10V M FL TP5
C126	0CE108DD618	1000UF STD 10V M FL TP5
C126	0CE477DD618	470UF STD 10V 20% FL TP 5
C127	0CE476DD618	47UF STD 10V 20% FL TP 5
C129	0CE106DK618	10UF STD 50V M FL TP5
C1311	0CE107DD618	100UF STD 10V M FL TP5
C133	0CE477DD618	470UF STD 10V 20% FL TP 5
C135	0CE107DD618	100UF STD 10V M FL TP5
C136	0CE107DD618	100UF STD 10V M FL TP5
C137	0CE477DD618	470UF STD 10V 20% FL TP 5
C138	0CE107DD618	100UF STD 10V M FL TP5
C161	0CN1010K519	100PF D 50V 10% B(Y5P) TA52
C162	0CN2210K519	220PF D 50V 10% B(Y5P) TA52
C163	0CE476DF618	47UF STD 16V M FL TP5
C164	0CN1040K949	0.1UF D 50V 80%,-20% F(Y5V) TA52
C165	0CE105DK618	1UF STD 50V M FL TP5
C166	0CN1030F679	10000PF D 16V 20% X5R TA52
C167	0CN1030F679	10000PF D 16V 20% X5R TA52
C201	0CN1040K949	0.1UF D 50V 80%,-20% F(Y5V) TA52
C202	0CX4700K409	47PF D 50V 5% SL TA52
C206	0CE107DD618	100UF STD 10V M FL TP5
C206	0CE227DD618	220UF STD 10V M FL TP5
C207	0CE226DF618	22UF STD 16V M FL TP5
C208	0CE226DF618	22UF STD 16V M FL TP5
C212	0CN4710K519	470PF D 50V 10% B(Y5P) TA52
C213	0CN4710K519	470PF D 50V 10% B(Y5P) TA52
C214	0CN4710K519	470PF D 50V 10% B(Y5P) TA52
C220	0CE106DF618	10UF STD 16V M FL TP5
C221	0CN4710K519	470PF D 50V 10% B(Y5P) TA52
C222	0CN1010K519	100PF D 50V 10% B(Y5P) TA52

For Capacitor & Resistors, the characters at 2nd and 3rd digit in the P/No. means as follows;	CC, CX, CK, CN : Ceramic	RD : Carbon Film
	CQ : Polyester	RS : Metal Oxide Film
	CE : Electrolytic	RN : Metal Film
		RF : Fusible

LOCA. NO	PART NO	DESCRIPTION
C228	0CE226DF618	22UF STD 16V M FL TP5
C229	0CE226DF618	22UF STD 16V M FL TP5
C245	0CE106DF618	10UF STD 16V M FL TP5
C248	0CE106DF618	10UF STD 16V M FL TP5
C249	0CE107DF618	100UF STD 16V M FL TP5
C256	0CE106DF618	10UF STD 16V M FL TP5
C260	0CE336DF618	33UF STD 16V M FL TP5
C2903	0CE106DH618	10UF STD 25V 20% FL TP 5
C2909	0CE106DH618	10UF STD 25V 20% FL TP 5
C2910	0CN1010K519	100PF D 50V 10% B(Y5P) TA52
C2911	0CN1010K519	100PF D 50V 10% B(Y5P) TA52
C2912	0CK4720W510	4700PF D 500V 10% B(Y5P) R
C2913	0CK4720W510	4700PF D 500V 10% B(Y5P) R
C2914	0CE106DP618	10UF STD 160V 20% FL TP 5
C2915	0CE107DK618	100UF STD 50V M FL TP5
C2917	0CE107DF618	100UF STD 16V M FL TP5
C2918	0CE107DF618	100UF STD 16V M FL TP5
C2919	0CE106DP618	10UF STD 160V 20% FL TP 5
C2922	0CE106DH618	10UF STD 25V 20% FL TP 5
C2933	0CK1010W515	100PF D 500V 10% B(Y5P) TR
C307	0CN1030F679	10000PF D 16V 20% X5R TA52
C308	0CF4741L438	0.47UF D 63V 5% TP 5 M/PE NI
C310	0CE107BJ618	100UF KME TYPE 35V 20% FL TP 5
C312	0CN2220F569	2200PF D 16V 10% X7R TA52
C313	0CQ3331N509	0.033UF D 100V 10% PE TP5
C316	0CE228DJ650	2200UF STD 35V 20% FM7.5 BULK
C324	0CQ3331N509	0.033UF D 100V 10% PE TP5
C331	0CQ1021N519	0.001U 100V K POLY NI TP
C333	0CN1020K519	1000PF D 50V 10% B(Y5P) TA52
C338	0CE228DH610	2200UF STD 25V 20% FL BULK
C339	0CK56101515	560PF D 1KV 10% B(Y5P) TR
C340	181-014Z	BUP 0.0033UF 1.6KV 5%,-5%
C348	0CE228BH61A	2200UF KME TYPE 25V 20% FL TP 7.5
C350	0CK56101515	560PF D 1KV 10% B(Y5P) TR
C401	181-091D	DEHR33A102KN2A 1000PF 1KV 10%
C402	181-091D	DEHR33A102KN2A 1000PF 1KV 10%
C403	0CK22101515	220PF D 1KV 10% B(Y5P) TR
C404	181-010A	PP 400V 0.022UF J
C405	181-014Y	MPP 1.6KV 0.0015UF J
C406	181-091D	DEHR33A102KN2A 1000PF 1KV 10%
C408	181-015K	MPP/NI 0.0091UF 1.6KV 3% FM 20MM
C409	181-010A	PP 400V 0.022UF J
C411	181-013A	0.33UF 200V 5% FM MPP
C413	181-038D	MPP 400V 0.24MF J
C414	181-010E	PP 400V 0.12UF J
C415	181-013U	MPP 630V 0.1UF J
C416	0CE107DK618	100UF STD 50V M FL TP5
C417	0CK1030K945	0.01UF D 50V 80%,-20% F(Y5V) TR
C418	0CN6810K519	680PF D 50V 10% B(Y5P) TA52
C419	0CN1030F679	10000PF D 16V 20% X5R TA52
C421	181-009V	PP 200V 0.047UF K
C423	0CE6851K652	6.8UF SM,SA 50V 20% FM7.5 BP(S)

LOCA. NO	PART NO	DESCRIPTION
C426	0CQ6831N509	0.068UF D 100V 10% PE TP5
C437	0CK56101515	560PF D 1KV 10% B(Y5P) TR
C438	0CE107DK618	100UF STD 50V M FL TP5
C440	181-091G	DEHR33D471KN3A 470PF 2KV 10%
C441	181-091G	DEHR33D471KN3A 470PF 2KV 10%
C442	0CQ5621N509	0.0056UF D 100V 10% PE TP5
C446	0CK56102515	560P 2KV K B TS
C447	0CE476DR618	47UF STD 250V 20% FL TP 5
C504	0CE476DD618	47UF STD 10V 20% FL TP 5
C506	0CE476DD618	47UF STD 10V 20% FL TP 5
C512	0CE476DF618	47UF STD 16V M FL TP5
C517	0CE476BF618	47UF KME TYPE 16V 20% FL TP 5
C518	0CE476DF618	47UF STD 16V M FL TP5
C519	0CE227DF618	220UF STD 16V M FL TP5
C521	0CE476DD618	47UF STD 10V 20% FL TP 5
C523	0CE335DK618	3.3UF STD 50V 20% FL TP 5
C524	0CK224DF56A	220000PF 2012 16V 10% R/TP X7R
C525	0CK224DF56A	220000PF 2012 16V 10% R/TP X7R
C526	0CK224DF56A	220000PF 2012 16V 10% R/TP X7R
C527	0CK224DF56A	220000PF 2012 16V 10% R/TP X7R
C529	0CE476DF618	47UF STD 16V M FL TP5
C601	0CE107DF618	100UF STD 16V M FL TP5
C601	0CE475DK618	4.7UF STD 50V 20% FL TP 5
C602	0CN3320F569	3300PF D 16V 10% X7R TA52
C603	0CN3320F569	3300PF D 16V 10% X7R TA52
C604	0CE107DF618	100UF STD 16V M FL TP5
C604	0CN2210K519	220PF D 50V 10% B(Y5P) TA52
C605	0CN1520F569	1500PF D 16V 10% X7R TA52
C606	0CE107DF618	100UF STD 16V M FL TP5
C606	0CE475DK618	4.7UF STD 50V 20% FL TP 5
C607	0CE475DK618	4.7UF STD 50V 20% FL TP 5
C608	0CE107DF618	100UF STD 16V M FL TP5
C610	0CE106DF618	10UF STD 16V M FL TP5
C611	0CN1030F679	10000PF D 16V 20% X5R TA52
C612	0CN1030F679	10000PF D 16V 20% X5R TA52
C613	0CE107DD618	100UF STD 10V M FL TP5
C614	0CN1030F679	10000PF D 16V 20% X5R TA52
C615	0CX5600K409	56PF D 50V 5% SL TA52
C617	0CN1040K949	0.1UF D 50V 80%,-20% F(Y5V) TA52
C618	181-007G	MPE ECQ-V1H334JL3(TR), 50V 0.33UF
C619	181-007G	MPE ECQ-V1H334JL3(TR), 50V 0.33UF
C620	181-442Z	PE,ECQ-B1H104KF3(TR)
C621	0CN1030F679	10000PF D 16V 20% X5R TA52
C622	0CN1020K519	1000PF D 50V 10% B(Y5P) TA52
C623	0CE106DF618	10UF STD 16V M FL TP5
C624	0CE476DD618	47UF STD 10V 20% FL TP 5
C625	0CX5600K409	56PF D 50V 5% SL TA52
C626	0CN4710K519	470PF D 50V 10% B(Y5P) TA52
C627	0CX5600K409	56PF D 50V 5% SL TA52
C628	0CC0200K115	2PF D 50V 0.5 PF NP0 TR
C629	0CC0200K115	2PF D 50V 0.5 PF NP0 TR
C630	0CN1030F679	10000PF D 16V 20% X5R TA52

For Capacitor & Resistors, the characters at 2nd and 3rd digit in the P/No. means as follows;	CC, CX, CK, CN : Ceramic CQ : Polyester CE : Electrolytic	RD : Carbon Film RS : Metal Oxide Film RN : Metal Film RF : Fusible
--	---	--

LOCA. NO	PART NO	DESCRIPTION
C631	0CX5600K409	56PF D 50V 5% SL TA52
C632	0CE476DF618	47UF STD 16V M FL TP5
C633	0CN2720F569	2700PF D 16V 10% X7R TA52
C634	0CN2720F569	2700PF D 16V 10% X7R TA52
C635	0CN2720F569	2700PF D 16V 10% X7R TA52
C636	0CN2720F569	2700PF D 16V 10% X7R TA52
C637	0CN1030F679	10000PF D 16V 20% X5R TA52
C638	0CN1030F679	10000PF D 16V 20% X5R TA52
C639	181-442Z	PE,ECQ-B1H104KF3(TR)
C640	181-442Z	PE,ECQ-B1H104KF3(TR)
C650	0CE108DH618	1000UF STD 25V M FL TP5
C651	0CN2230H949	22000PF D 25V 80%,-20% F(Y5V) TA52
C652	0CQ2242K439	0.22UF S 50V 5% M/PE NI TP5
C653	0CN3320F569	3300PF D 16V 10% X7R TA52
C655	0CQ2242K439	0.22UF S 50V 5% M/PE NI TP5
C656	0CN3320F569	3300PF D 16V 10% X7R TA52
C657	0CE336DD618	33UF STD 10V 20% FL TP 5
C660	181-007G	MPE ECQ-V1H334JL3(TR), 50V 0.33UF
C661	181-007G	MPE ECQ-V1H334JL3(TR), 50V 0.33UF
C662	181-007G	MPE ECQ-V1H334JL3(TR), 50V 0.33UF
C663	181-007G	MPE ECQ-V1H334JL3(TR), 50V 0.33UF
C803	181-091G	DEHR33D471KN3A 470PF 2KV 10%
C806	181-014Y	MPP 1.6KV 0.0015UF J
C807	181-091C	DEHR33A471KN2A 470PF 1KV 10%
C808	0CE107BJ618	100UF KME TYPE 35V 20% FL TP 5
C809	0CK1020K515	1000PF D 50V 10% B(Y5P) TR
C811	181-120K	2200PF 4KV M E FMTW LEAD 4.5
C813	181-091D	DEHR33A102KN2A 1000PF 1KV 10%
C814	0CQZVBK002A	A.C 275V 0.1UF M (S=15)
C815	181-091C	DEHR33A471KN2A 470PF 1KV 10%
C816	181-091D	DEHR33A102KN2A 1000PF 1KV 10%
C821	181-001U	LUG(85) 470UF 450V 20% FM
C824	0CQZVBK002C	A.C 275V 0.22UF K (S=22.5)
C853	0CE108DF618	1000UF STD 16V M FL TP5
C855	0CE477DD618	470UF STD 10V 20% FL TP 5
C856	181-091C	DEHR33A471KN2A 470PF 1KV 10%
C857	0CE228DF618	2200UF STD 16V 20% FL TP 5
C858	0CE108DF618	1000UF STD 16V M FL TP5
C859	181-091C	DEHR33A471KN2A 470PF 1KV 10%
C861	0CE108DF618	1000UF STD 16V M FL TP5
C862	0CE475CK636	4.7UF SHL,SD 50V 20% FM5 BP(D) TP
C863	181-091C	DEHR33A471KN2A 470PF 1KV 10%
C864	0CE108BH618	1000UF KME TYPE 25V 20% FL TP 5
C866	181-091C	DEHR33A471KN2A 470PF 1KV 10%
C867	0CE107DN618	100UF STD 100V 20% FL TP 5
C868	0CE227DD618	220UF STD 10V M FL TP5
C869	0CE106DH618	10UF STD 25V 20% FL TP 5
C870	181-091D	DEHR33A102KN2A 1000PF 1KV 10%
C871	0CE227DP61A	220UF STD 160V 20% FL TP 7.5
C872	0CE227DP61A	220UF STD 160V 20% FL TP 7.5
C873	0CQ1041N509	0.1UF D 100V 10% PE TP5
C875	0CE108DF618	1000UF STD 16V M FL TP5

LOCA. NO	PART NO	DESCRIPTION
C900	0CE475BR618	4.7UF KME TYPE 250V 20% FL TP 5
C901	0CE475BR618	4.7UF KME TYPE 250V 20% FL TP 5
C902	0CE475DR618	4.7UF STD 250V 20% FL TP 5
C903	0CC0500K115	5PF D 50V 0.5 PF NP0 TR
C904	0CE475BR618	4.7UF KME TYPE 250V 20% FL TP 5
C905	0CK5610W515	560PF D 500V 10% B(Y5P) TR
C906	0CN1040K949	0.1UF D 50V 80%,-20% F(Y5V) TA52
C907	0CN1040K949	0.1UF D 50V 80%,-20% F(Y5V) TA52
C910	0CE225DK618	2.2UF STD 50V 20% FL TP 5
C911	0CN1040K949	0.1UF D 50V 80%,-20% F(Y5V) TA52
C912	0CN1040K949	0.1UF D 50V 80%,-20% F(Y5V) TA52
C914	0CE228DF618	2200UF STD 16V 20% FL TP 5
C915	0CK5610W515	560PF D 500V 10% B(Y5P) TR
C916	181-033T	2KV B 222K TP7.5
C917	0CN1040K949	0.1UF D 50V 80%,-20% F(Y5V) TA52
C918	0CC0500K115	5PF D 50V 0.5 PF NP0 TR
C919	0CK5610W515	560PF D 500V 10% B(Y5P) TR
C920	0CC5600K415	56PF D 50V 5% NP0 TR
C925	0CN1040K949	0.1UF D 50V 80%,-20% F(Y5V) TA52
C927	0CC4700K415	47PF D 50V 5% NP0 TR
C928	0CC3300K415	33PF D 50V 5% NP0 TR
C990	0CN1020K519	1000PF D 50V 10% B(Y5P) TA52
C991	0CN1020K519	1000PF D 50V 10% B(Y5P) TA52
COIL & INDUCTOR		
L101	0LA0102K139	INDUCTOR,AXIAL LEAD 10UH 10% A 4.0 X 10.5
L1101	0LA0102K119	INDUCTOR,AXIAL LEAD 10UH K 2.3*3.4 TP
L1201	0LA0472K119	INDUCTOR,AXIAL LEAD 47UH K 2.3*3.4 TP
L1202	0LA0472K119	INDUCTOR,AXIAL LEAD 47UH K 2.3*3.4 TP
L1203	0LA0472K119	INDUCTOR,AXIAL LEAD 47UH K 2.3*3.4 TP
L1204	0LA0472K119	INDUCTOR,AXIAL LEAD 47UH K 2.3*3.4 TP
L204	0LA0102K119	INDUCTOR,AXIAL LEAD 10UH K 2.3*3.4 TP
L205	0LA0102K119	INDUCTOR,AXIAL LEAD 10UH K 2.3*3.4 TP
L206	0LA0102K119	INDUCTOR,AXIAL LEAD 10UH K 2.3*3.4 TP
L207	0LA0102K119	INDUCTOR,AXIAL LEAD 10UH K 2.3*3.4 TP
L401	150-L02Q	COIL,LINEARITY 10UH PHY TURN
L402	150-C13B	COIL,CHOKE 52UH PHY TURN
L403	150-C13B	COIL,CHOKE 52UH PHY TURN
L404	150-W01A	COIL,CHOKE WIDTH 24UH
L407	150-717K	COIL,CHOKE 1.1UH PHY TURN
L603	0LA0102K119	INDUCTOR,AXIAL LEAD 10UH K 2.3*3.4 TP
L605	0LA0102K119	INDUCTOR,AXIAL LEAD 10UH K 2.3*3.4 TP
L853	150-C02F	COIL,CHOKE 82UH PHY TURN
L901	0LA0272K139	INDUCTOR,AXIAL LEAD 27UH K 4X10.5 TP
CONNECTOR		
G18	387-907F	1P 350MM R-H UL1617AWG22
G19	387-907F	1P 350MM R-H UL1617AWG22
JP801B	366-009D	2.36PAI 1P . K/M AUTO
JP802B	366-009D	2.36PAI 1P . K/M AUTO
P013	366-921B	GIL-G-03P LGC 3PIN 2.54MM STICK
P1001B	366-932C	IL-G-04P LGC 2.5MM S/T STICK

For Capacitor & Resistors, the characters at 2nd and 3rd digit in the P/No. means as follows;	CC, CX, CK, CN : Ceramic	RD : Carbon Film
	CQ : Polyester	RS : Metal Oxide Film
	CE : Electrolytic	RN : Metal Film
		RF : Fusible

LOCA. NO	PART NO	DESCRIPTION
P102	366-009D	2.36PAI 1P . K/M AUTO
P1101A	366-009D	2.36PAI 1P . K/M AUTO
P1101B	366-009D	2.36PAI 1P . K/M AUTO
P1102	366-009D	2.36PAI 1P . K/M AUTO
P1103	387-552S	2P 10.0MM 400MM H-H UL1617AWG22
P1103A	366-009D	2.36PAI 1P . K/M AUTO
P1103B	366-009D	2.36PAI 1P . K/M AUTO
P1152B	387-A08H	8P 2.5MM 450MM H-B UL1007AWG26
P201B	366-173L	2.5MM 12*2P AEPH-254 A/K R/N
P202B	366-173L	2.5MM 12*2P AEPH-254 A/K R/N
P203B	366-173L	2.5MM 12*2P AEPH-254 A/K R/N
P204B	366-173L	2.5MM 12*2P AEPH-254 A/K R/N
P2903	366-921B	GIL-G-03P LGC 3PIN 2.54MM STICK
P601B	366-921L	GIL-G-12P LGC 12PIN 2.54MM STICK
P601B	387-J12L	12P 2.5MM 700MM H-H UL1185AWG26
P602B	387-B04K	4P 2.5MM 600MM H-B UL1185AWG26
P650	366-921C	IL-G-04 LGC 2.5MM S/T
P651	366-921B	GIL-G-03P LGC 3PIN 2.54MM STICK
P803A	366-009D	2.36PAI 1P . K/M AUTO
P803B	366-009D	2.36PAI 1P . K/M AUTO
P822A	366-009D	2.36PAI 1P . K/M AUTO
P822B	366-009D	2.36PAI 1P . K/M AUTO
P823	366-009D	2.36PAI 1P . K/M AUTO
P824	366-009D	2.36PAI 1P . K/M AUTO
P901A	366-921L	GIL-G-12P LGC 12PIN 2.54MM STICK
P902A	366-921J	GIL-G-10P LGC 10PIN 2.54MM STICK
P902B	387-A10G	10P 2.5MM 400MM H-B UL1007AWG26
P905	366-009D	2.36PAI 1P . K/M AUTO
P906	366-009D	2.36PAI 1P . K/M AUTO
RESISTOR		
AR101	0RRZVTA001D	22 OHM 1 / 16 W 1608 5% R/TP 4P E24
AR102	0RRZVTA001D	22 OHM 1 / 16 W 1608 5% R/TP 4P E24
F851	0RP0020J809	0.02 OHM 1 W 20% TA52
F855	0RP0050H709	0.05 OHM 1/2 W 10% TA52
F856	0RP0020J809	0.02 OHM 1 W 20% TA52
FB854	0RF0470H609	0.47 OHM 1/2 W 5.00% TA52
FR2948	0RF1000H609	100 OHM 1/2 W 5.00% TA52
FR359	0RP0050H709	0.05 OHM 1/2 W 10% TA52
FR360	0RP0050H709	0.05 OHM 1/2 W 10% TA52
FR442	0RF0331K607	3.3 OHM 2 W 5.00% TA62
FR443	0RP0050H709	0.05 OHM 1/2 W 10% TA52
FR448	0RP0050H709	0.05 OHM 1/2 W 10% TA52
J127	0RN1201F409	1.2K OHM 1/6 W 1.00% TA52
R101	0RD0752F609	75 OHM 1/6 W 5.00% TA52
R102	0RD0822F609	82 OHM 1/6 W 5.00% TA52
R103	0RS1801H609	1.8K OHM 1/2 W 5.00% TA52
R104	0RD0102F609	10 OHM 1/6 W 5% TA52
R105	0RD2200F609	220 OHM 1/6 W 5.00% TA52
R107	0RD1000F609	100 OHM 1/6 W 5% TA52
R108	0RD1000F609	100 OHM 1/6 W 5% TA52
R109	0RD1000F609	100 OHM 1/6 W 5% TA52

LOCA. NO	PART NO	DESCRIPTION
R110	0RD1000F609	100 OHM 1/6 W 5% TA52
R110	0RS0102K607	10 OHM 2 W 5.00% TA62
R1101	0RD4702F609	47K OHM 1/6 W 5% TA52
R1102	0RD1501F609	1.5K OHM 1/6 W 5% TA52
R1103	0RD3300F609	330 OHM 1/6 W 5.00% TA52
R1104	0RD0102F609	10 OHM 1/6 W 5% TA52
R111	0RD1001F609	1K OHM 1/6 W 5% TA52
R111	0RS0102K607	10 OHM 2 W 5.00% TA62
R112	0RD1002F609	10K OHM 1/6 W 5% TA52
R113	0RD0102F609	10 OHM 1/6 W 5% TA52
R1130	0RKZVTA001K	0.47M OHM 1/2 W 5% TA52
R1151	0RD1000F609	100 OHM 1/6 W 5% TA52
R1152	0RD1000F609	100 OHM 1/6 W 5% TA52
R1153	0RD1000F609	100 OHM 1/6 W 5% TA52
R1154	0RD1000F609	100 OHM 1/6 W 5% TA52
R1155	0RD1000F609	100 OHM 1/6 W 5% TA52
R116	0RD1002F609	10K OHM 1/6 W 5% TA52
R117	0RD2201F609	2.2K OHM 1/6 W 5.00% TA52
R119	0RD0102F609	10 OHM 1/6 W 5% TA52
R1204	0RD2403F609	240K OHM 1/6 W 5.00% TA52
R1206	0RD0752F609	75 OHM 1/6 W 5.00% TA52
R1208	0RD2403F609	240K OHM 1/6 W 5.00% TA52
R1212	0RD0752F609	75 OHM 1/6 W 5.00% TA52
R125	0RD1000F609	100 OHM 1/6 W 5% TA52
R126	0RD1000F609	100 OHM 1/6 W 5% TA52
R127	0RD1000F609	100 OHM 1/6 W 5% TA52
R128	0RD0222F609	22 OHM 1/6 W 5.00% TA52
R129	0RD1000F609	100 OHM 1/6 W 5% TA52
R1292	0RD0752F609	75 OHM 1/6 W 5.00% TA52
R130	0RD1000F609	100 OHM 1/6 W 5% TA52
R131	0RD2200F609	220 OHM 1/6 W 5.00% TA52
R132	0RD2200F609	220 OHM 1/6 W 5.00% TA52
R133	0RD2400F609	240 OHM 1/6 W 5.00% TA52
R134	0RD1001F609	1K OHM 1/6 W 5% TA52
R135	0RS1801H609	1.8K OHM 1/2 W 5.00% TA52
R136	0RD1002F609	10K OHM 1/6 W 5% TA52
R137	0RD1002F609	10K OHM 1/6 W 5% TA52
R138	0RD0102F609	10 OHM 1/6 W 5% TA52
R160	0RD1001F609	1K OHM 1/6 W 5% TA52
R161	0RD3002F609	30K OHM 1/6 W 5.00% TA52
R162	0RD1002F609	10K OHM 1/6 W 5% TA52
R163	0RD1003F609	100K OHM 1/6 W 5% TA52
R164	0RD1801F609	1.8K OHM 1/6 W 5.00% TA52
R165	0RD1801F609	1.8K OHM 1/6 W 5.00% TA52
R166	0RD4701F609	4.7K OHM 1/6 W 5% TA52
R167	0RD4701F609	4.7K OHM 1/6 W 5% TA52
R168	0RD4701F609	4.7K OHM 1/6 W 5% TA52
R169	0RD5602F609	56K OHM 1/6 W 5% TA52
R170	0RD2202F609	22K OHM 1/6 W 5% TA52
R171	0RD5103F609	510K OHM 1/6 W 5.00% TA52
R172	0RD5602F609	56K OHM 1/6 W 5% TA52
R173	0RD1000F609	100 OHM 1/6 W 5% TA52

For Capacitor & Resistors, the characters at 2nd and 3rd digit in the P/No. means as follows;	CC, CX, CK, CN : Ceramic CQ : Polyester CE : Electrolytic	RD : Carbon Film RS : Metal Oxide Film RN : Metal Film RF : Fusible
--	---	--

LOCA. NO	PART NO	DESCRIPTION
R200	0RD0752F609	75 OHM 1/6 W 5.00% TA52
R201	0RD0752F609	75 OHM 1/6 W 5.00% TA52
R202	0RD0752F609	75 OHM 1/6 W 5.00% TA52
R203	0RD2403F609	240K OHM 1/6 W 5.00% TA52
R204	0RD2403F609	240K OHM 1/6 W 5.00% TA52
R208	0RD1000F609	100 OHM 1/6 W 5% TA52
R211	0RD0752F609	75 OHM 1/6 W 5.00% TA52
R218	0RD0752F609	75 OHM 1/6 W 5.00% TA52
R219	0RD0752F609	75 OHM 1/6 W 5.00% TA52
R220	0RD1001F609	1K OHM 1/6 W 5% TA52
R2906	0RD1500F609	150 OHM 1/6 W 5.00% TA52
R2907	0RD1600F609	160 OHM 1/6 W 5.00% TA52
R2908	0RD3001F609	3K OHM 1/6 W 5.00% TA52
R2909	0RD1500F609	150 OHM 1/6 W 5.00% TA52
R2910	0RD3001F609	3K OHM 1/6 W 5.00% TA52
R2911	0RD5601F609	5.6K OHM 1/6 W 5% TA52
R2912	0RD3001F609	3K OHM 1/6 W 5.00% TA52
R2921	0RD3000H609	300 OHM 1/2 W 5.00% TA52
R2922	0RD3000H609	300 OHM 1/2 W 5.00% TA52
R2928	0RD0102F609	10 OHM 1/6 W 5% TA52
R2929	0RD1000F609	100 OHM 1/6 W 5% TA52
R2930	0RD0102F609	10 OHM 1/6 W 5% TA52
R2931	0RD1000F609	100 OHM 1/6 W 5% TA52
R2932	0RD0822F609	82 OHM 1/6 W 5.00% TA52
R2933	0RD0822F609	82 OHM 1/6 W 5.00% TA52
R2934	0RF0102J607	10 OHM 1 W 5.00% TA62
R2935	0RD1202H609	12K OHM 1/2 W 5.00% TA52
R2936	0RD2001H609	2K OHM 1/2 W 5.00% TA52
R2937	0RD5602H609	56K OHM 1/2 W 5.00% TA52
R2938	0RD5602H609	56K OHM 1/2 W 5.00% TA52
R2939	0RD1201H609	1.2K OHM 1/2 W 5.00% TA52
R2940	0RD1501H609	1.5K OHM 1/2 W 5.00% TA52
R2941	0RD1501H609	1.5K OHM 1/2 W 5.00% TA52
R2942	0RD0391H609	3.9 OHM 1/2 W 5.00% TA52
R2943	0RD0562H609	56 OHM 1/2 W 5.00% TA52
R2944	0RD0391H609	3.9 OHM 1/2 W 5.00% TA52
R2945	0RD0562H609	56 OHM 1/2 W 5.00% TA52
R2946	0RS8200J607	820 OHM 1 W 5.00% TA62
R2947	0RS8200J607	820 OHM 1 W 5.00% TA62
R2955	0RD2202H609	22K OHM 1/2 W 5.00% TA52
R2959	0RD5101F609	5.1K OHM 1/6 W 5.00% TA52
R2990	0RD0222F609	22 OHM 1/6 W 5.00% TA52
R311	0RD1002F609	10K OHM 1/6 W 5% TA52
R312	0RD2202F609	22K OHM 1/6 W 5% TA52
R313	0RD1001F609	1K OHM 1/6 W 5% TA52
R314	0RD3001F609	3K OHM 1/6 W 5.00% TA52
R318	0RS0331K619	3.3 OHM 2 W 5% TR
R324	0RD1001F609	1K OHM 1/6 W 5% TA52
R325	0RD1000F609	100 OHM 1/6 W 5% TA52
R326	0RN1201F409	1.2K OHM 1/6 W 1.00% TA52
R327	0RN2701F409	2.7K OHM 1/6 W 1.00% TA52
R328	0RS3300K607	330 OHM 2 W 5.00% TA62

LOCA. NO	PART NO	DESCRIPTION
R329	0RN0221J607	2.2 OHM 1 W 5.00% TA62
R330	0RN0221J607	2.2 OHM 1 W 5.00% TA62
R331	0RN1001F409	1K OHM 1/6 W 1.00% TA52
R332	0RD1000F609	100 OHM 1/6 W 5% TA52
R334	0RD1002F609	10K OHM 1/6 W 5% TA52
R335	0RD1000F609	100 OHM 1/6 W 5% TA52
R401	0RD1002F609	10K OHM 1/6 W 5% TA52
R403	0RS1001J607	1K OHM 1 W 5.00% TA62
R404	0RS4701K619	4.7K OHM 2 W 5% TR
R405	180-A01B	RW ROUND G 2W 0.11 K TA31(63)
R406	0RS0561K619	5.6 OHM 2 W 5% TR
R407	0RS1501K607	1.5K OHM 2 W 5.00% TA62
R410	0RD3301F609	3.3K OHM 1/6 W 5.00% TA52
R413	0RN4701F409	4.7K OHM 1/6 W 1.00% TA52
R414	0RD6802F609	68K OHM 1/6 W 5.00% TA52
R415	0RD1000F609	100 OHM 1/6 W 5% TA52
R416	0RN4702F409	47K OHM 1/6 W 1.00% TA52
R417	0RD4700F609	470 OHM 1/6 W 0.05 TA52
R418	0RD2001A609	2K OHM 1/2 W(7.0) 5.00% TA52
R419	0RN1501F409	1.5K OHM 1/6 W 1.00% TA52
R420	0RD1001F609	1K OHM 1/6 W 5% TA52
R421	0RD0221F609	2.2 OHM 1/6 W 5.00% TA52
R422	0RD1001A609	1K OHM 1/2 W(7.0) 5.00% TA52
R423	0RD2701A609	2.7K OHM 1/2 W(7.0) 5.00% TA52
R424	0RS0561K607	5.6 OHM 2 W 5.00% TA62
R425	0RD2400A609	240 OHM 1/2 W(7.0) 5.00% TA52
R427	0RD1001A609	1K OHM 1/2 W(7.0) 5.00% TA52
R430	0RS1001H609	1K OHM 1/2 W 5.00% TA52
R431	0RS6802H609	68K OHM 1/2 W 5.00% TA52
R432	0RD3903F609	390K OHM 1/6 W 5.00% TA52
R434	0RS3901H609	3.9K OHM 1/2 W 5.00% TA52
R450	0RD0221A609	2.2 OHM 1/2 W(7.0) 5.00% TA52
R451	180-C02M	5.6K OHM 1/2 W 10% TA52
R452	0RS0101J607	1 OHM 1 W 5.00% TA62
R490	180-B01E	5 W RS RECT 15K J DOUBLE
R544	0RS0332K607	33 OHM 2 W 5.00% TA62
R549	0RS0331K607	3.3 OHM 2 W 5.00% TA62
R601	0RD3601F609	3.6K OHM 1/6 W 5.00% TA52
R602	0RD3601F609	3.6K OHM 1/6 W 5.00% TA52
R608	0RD0822A609	82 OHM 1/2 W(7.0) 5.00% TA52
R611	0RD0102F609	10 OHM 1/6 W 5% TA52
R612	0RD1000F609	100 OHM 1/6 W 5% TA52
R613	0RD1000F609	100 OHM 1/6 W 5% TA52
R614	0RD3302F609	33K OHM 1/6 W 5% TA52
R615	0RD3302F609	33K OHM 1/6 W 5% TA52
R623	0RD1000F609	100 OHM 1/6 W 5% TA52
R624	0RD1000F609	100 OHM 1/6 W 5% TA52
R636	0RD1001F609	1K OHM 1/6 W 5% TA52
R637	0RD1001F609	1K OHM 1/6 W 5% TA52
R651	0RD3001F609	3K OHM 1/6 W 5.00% TA52
R652	0RD8201F609	8.2K OHM 1/6 W 5.00% TA52
R654	0RD4702F609	47K OHM 1/6 W 5% TA52

For Capacitor & Resistors, the characters at 2nd and 3rd digit in the P/No. means as follows;	CC, CX, CK, CN : Ceramic CQ : Polyester CE : Electrolytic	RD : Carbon Film RS : Metal Oxide Film RN : Metal Film RF : Fusible
--	---	--

LOCA. NO	PART NO	DESCRIPTION
R656	0RD8201F609	8.2K OHM 1/6 W 5.00% TA52
R657	0RD1001F609	1K OHM 1/6 W 5% TA52
R658	0RD1001F609	1K OHM 1/6 W 5% TA52
R659	0RD1001F609	1K OHM 1/6 W 5% TA52
R660	0RD4702F609	47K OHM 1/6 W 5% TA52
R661	0RD3001F609	3K OHM 1/6 W 5.00% TA52
R663	0RD1002F609	10K OHM 1/6 W 5% TA52
R664	0RD2701F609	2.7K OHM 1/6 W 5% TA52
R665	0RD2001A609	2K OHM 1/2 W(7.0) 5.00% TA52
R668	0RD1001F609	1K OHM 1/6 W 5% TA52
R669	0RD1001F609	1K OHM 1/6 W 5% TA52
R680	0RD3000A609	300 OHM 1/2 W(7.0) 5.00% TA52
R803	0RD0201A609	2.0 OHM 1/2 W (7.0) 5% TA52
R804	0RD4701F609	4.7K OHM 1/6 W 5% TA52
R805	0RD1001F609	1K OHM 1/6 W 5% TA52
R806	180-A01Q	0.082 OHM 2W +/-10% PRW V-TYPE
R807	0RKZVTA001C	8.2M OHM 1/2 W 5% TA52
R808	0RD3001F609	3K OHM 1/6 W 5.00% TA52
R809	0RS2402K607	24K OHM 2 W 5.00% TA62
R810	0RS2402K619	24K OHM 2 W 5% TR
R821	0RS6801H609	6.8K OHM 1/2 W 5.00% TA52
R832	0RD1600F609	160 OHM 1/6 W 5.00% TA52
R833	0RD2203A609	220K OHM 1/2 W(7.0) 5.00% TA52
R852	0RS0102K607	10 OHM 2 W 5.00% TA62
R855	0RD4701F609	4.7K OHM 1/6 W 5% TA52
R856	0RD4702F609	47K OHM 1/6 W 5% TA52
R857	0RD2701F609	2.7K OHM 1/6 W 5% TA52
R859	0RD7501F609	7.5K OHM 1/6 W 5.00% TA52
R860	0RD4701F609	4.7K OHM 1/6 W 5% TA52
R862	0RD4702F609	47K OHM 1/6 W 5% TA52
R863	0RD2001F609	2K OHM 1/6 W 5% TA52
R864	0RF0161K607	1.6 OHM 2 W 5.00% TA62
R865	0RF0161K607	1.6 OHM 2 W 5.00% TA62
R866	0RS1002H609	10K OHM 1/2 W 5.00% TA52
R867	0RD7502A609	75K OHM 1/2 W(7.0) 5.00% TA52
R868	0RD1002F609	10K OHM 1/6 W 5% TA52
R869	0RD4701F609	4.7K OHM 1/6 W 5% TA52
R870	0RD4702F609	47K OHM 1/6 W 5% TA52
R873	0RD4701F609	4.7K OHM 1/6 W 5% TA52
R874	0RD4701F609	4.7K OHM 1/6 W 5% TA52
R877	0RD4702F609	47K OHM 1/6 W 5% TA52
R902	0RD1002F609	10K OHM 1/6 W 5% TA52
R903	0RS5602K607	56K OHM 2 W 5.00% TA62
R905	0RD1001F609	1K OHM 1/6 W 5% TA52
R906	0RD2200F609	220 OHM 1/6 W 5.00% TA52
R907	0RS5602K607	56K OHM 2 W 5.00% TA62
R908	0RS4700H609	470 OHM 1/2 W 5.00% TA52
R909	0RN2201F409	2.2K OHM 1/6 W 1.00% TA52
R910	0RF0141K607	1.4 OHM 2 W 5.00% TA62
R912	0RN3301F409	3.3K OHM 1/6 W 1.00% TA52
R913	0RN3301F409	3.3K OHM 1/6 W 1.00% TA52
R914	0RD2401F609	2.4K OHM 1/6 W 5.00% TA52

LOCA. NO	PART NO	DESCRIPTION
R915	0RD1001F609	1K OHM 1/6 W 5% TA52
R917	0RD1803H609	180K OHM 1/2 W 5% TA52
R918	0RS5602K607	56K OHM 2 W 5.00% TA62
R921	0RN1001F409	1K OHM 1/6 W 1.00% TA52
R929	0RD2401F609	2.4K OHM 1/6 W 5.00% TA52
R930	0RS4700H609	470 OHM 1/2 W 5.00% TA52
R938	0RS4700H609	470 OHM 1/2 W 5.00% TA52
R946	0RD1001F609	1K OHM 1/6 W 5% TA52
R947	0RD2401F609	2.4K OHM 1/6 W 5.00% TA52
SWITCH		
SW1101	6600VM2002A	SDKEA3 ALPS IEC 250V 8A HORIZONTAL 480G
SW1151	140-315A	SKHV17910B 12V 0.05A HORIZONTAL 160G
SW1152	140-315A	SKHV17910B 12V 0.05A HORIZONTAL 160G
SW1153	140-315A	SKHV17910B 12V 0.05A HORIZONTAL 160G
SW1154	140-315A	SKHV17910B 12V 0.05A HORIZONTAL 160G
SW1155	140-315A	SKHV17910B 12V 0.05A HORIZONTAL 160G
SW1156	140-315A	SKHV17910B 12V 0.05A HORIZONTAL 160G
SPARK GAP		
SG904	6918VAX002H	WSP-122N 1200V -100V,+300V AXIAL TP
SG911	6918VAX002D	WSP-301M 300V 20% AXIAL TYPE 5MM
SG912	6918VAX002D	WSP-301M 300V 20% AXIAL TYPE 5MM
SG913	6918VAX002D	WSP-301M 300V 20% AXIAL TYPE 5MM
FILTER & CRYSTAL		
B100	6210TCE001G	HH-1M3216-501 CERATEC 3216MM R/TP
FB001	125-022K	FERRITE AXIAL 62MM 1UH NY 3.5X6.0MM
FB204	125-022K	FERRITE AXIAL 62MM 1UH NY 3.5X6.0MM
FB301	125-022K	FERRITE AXIAL 62MM 1UH NY 3.5X6.0MM
FB801	125-022K	FERRITE AXIAL 62MM 1UH NY 3.5X6.0MM
FB802	125-022K	FERRITE AXIAL 62MM 1UH NY 3.5X6.0MM
FB805	125-022K	FERRITE AXIAL 62MM 1UH NY 3.5X6.0MM
FB853	125-022K	FERRITE AXIAL 62MM 1UH NY 3.5X6.0MM
FB855	125-022K	FERRITE AXIAL 62MM 1UH NY 3.5X6.0MM
FB856	125-022K	FERRITE AXIAL 62MM 1UH NY 3.5X6.0MM
FB902	125-022K	FERRITE AXIAL 62MM 1UH NY 3.5X6.0MM
J121	125-022K	FERRITE AXIAL 62MM 1UH NY 3.5X6.0MM
J59	125-022K	FERRITE AXIAL 62MM 1UH NY 3.5X6.0MM
L102	125-022K	FERRITE AXIAL 62MM 1UH NY 3.5X6.0MM
L601	125-022K	FERRITE AXIAL 62MM 1UH NY 3.5X6.0MM
T1102	150-F06P	LINE FILTER SQE2930 10MH
T811	150-F06T	SQE3535 20MH
X001	156-A01L	RESONATOR,CRYSTAL HC49U 6.000MHZ
X101	6202VDB007B	RESONATOR,CRYSTAL HC49U 20.250MHZ
X501	6202VDB007A	RESONATOR,CRYSTAL HC49U 5.000MHZ
X601	156-A02M	RESONATOR,CRYSTAL HC49U 18.432MHZ
JACK		
JA1	6613V00010A	PMJ016A A/V 3P+S VHS+E/P (RD WH YL)
JA201	6612VJH011C	PPJ109C A/V IN/OUT 6P STEREO FOR 21PIN
JK202	6613V00013K	PMJ021-14 A/V 9P WITH S/W



P/NO : 3828VD0151T

Sep., 2005
Printed in Korea

