

ALL DIMENSIONS ARE REFERENCE
(SEE C-203-XXXX-XX FOR CONTROLLING PRINT)

DO NOT
SCALE FROM
THIS PRINT

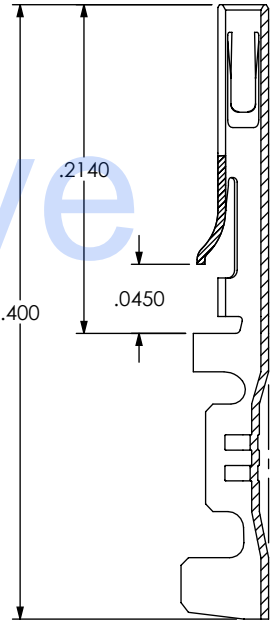
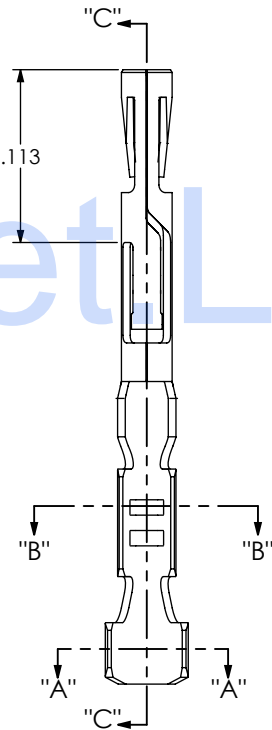
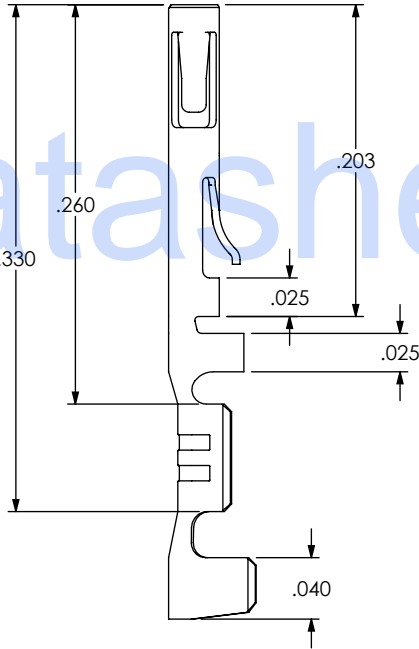
CC03X-XXXX-01-XX

SUPPLIED
L: LOOSE
R: REEL
M: MINI REEL

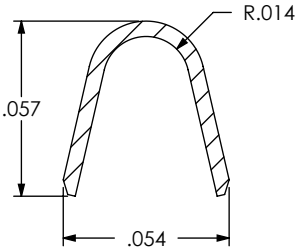
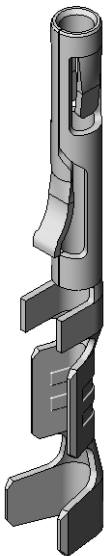
PLATING SPECIFICATION
-GF: FLASH SELECTIVE GOLD
-G: LIGHT SELECTIVE GOLD
-H: HEAVY SELECTIVE GOLD

LEAD STYLE
-2830: 28-30 AWG

OPTION
INSULATION THICKNESS:

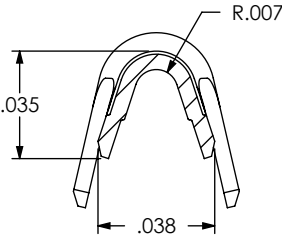


SECTION "C"-"C"



SECTION "A"-"A"
SCALE 16 : 1

FIG 1
(CC03L-2830-0T-XX SHOWN)



SECTION "B"-"B"
SCALE 16 : 1

CRITICAL DIMENSION INSPECTION INSTRUCTION TABLE	
ASSEMBLY OPERATION	IN-PROCESS INSPECTION
STRIP PINS FROM CARRIER	C1, C2, C3
REWIND	C1, C2, C3, C4, C5

- NOTES:
1. REPRESENTS A CRITICAL DIMENSION.
 2. NOTE DELETED.
 3. NOTE DELETED.
 4. NOTE DELETED.
 5. NOTE DELETED.
 6. NOTE DELETED.
 7. NOTE DELETED.

UNLESS OTHERWISE SPECIFIED,
DIMENSIONS ARE IN INCHES.
TOLERANCES ARE:
DECIMALS ANGLES
.XX: ±.01 [.3] 2°
.XXX: ±.003 [.08]
.XXXX: ±.0015 [.038]

PROPRIETARY NOTE
THIS DOCUMENT CONTAINS INFORMATION
CONFIDENTIAL AND PROPRIETARY TO
SAMTEC, INC. AND SHALL NOT BE REPRODUCED
OR TRANSFERRED TO OTHER DOCUMENTS OR
DISCLOSED TO OTHERS OR USED FOR ANY
PURPOSE OTHER THAN THAT WHICH IT WAS
OBTAINED WITHOUT THE EXPRESSED WRITTEN
CONSENT OF SAMTEC, INC.

MATERIAL: DO NOT SCALE DRAWING SHEET SCALE: 8:1
BeCu C172, BRUSH ALLOY 190, TEMPER HM
THICKNESS: .0050



520 PARK EAST BLVD, NEW ALBANY, IN 47150
PHONE: 812-944-6733 FAX: 812-948-5047
e-Mail: info@SAMTEC.com code: 55322

DESCRIPTION:
.050" C.L. DISCRETE WIRE CONTACT

DWG. NO.
CC03X-XXXX-01-XX

BY: BRATCHER 3/8/2005 SHEET 1 OF 2

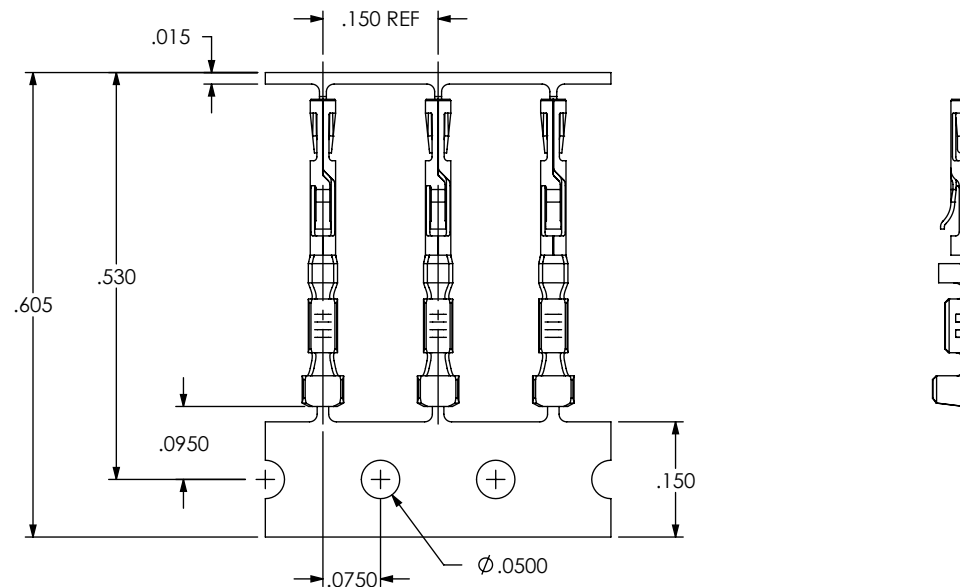


FIG 2
(CC03R-2830-0T-X SHOWN)
(SAME AS FIG 1, UNLESS OTHERWISE SHOWN)
(SEE FIG 3 FOR REEL SPECIFICATIONS)

REEL SPECIFICATIONS

-R: REEL

PLATED C-203 PARTS TO BE PULLED, PLATING OPTION CONFIRMED,
35,000 +700/-0 PCS POSITIONED AS SHOWN ON SAMTEC REEL WITH VIEWPORTS,
LABELED CC03R WITH APPROPRIATE PLATING CALLOUT AND LABEL PLACED AS SHOWN.
MAXIMUM NO OF SPLICES PER REEL: 2. SPLICES ARE NOT TO BE CONNECTED.

NUMBER OF SPLICES TO BE MARKED ON EACH REEL.

REELED PARTS TO BE INTERLEAVED WITH PAPER BETWEEN EACH LAYER OF PARTS.
THREE SPLICES IN INTERLEAF ALLOWED PER REEL. SECURELY CONNECT INTERLEAF SPLICE.
OUTER WRAP SHALL RECEIVE RB-24-0.75-P PROTECTIVE REEL BAND.

DUE TO PLATING REQUIREMENTS CONTACT SAMPLES MAY BE REMOVED INTERMITTINGLY
FROM THE BANDOLIER RESULTING IN SMALL GAPS BUT DOES NOT AFFECT FINAL COUNT.

-M: MINI REEL

PLATED C-203 PARTS TO BE PULLED, PLATING OPTION CONFIRMED,
5,000 +300/-0 PCS POSITIONED AS SHOWN ON SAMTEC REEL WITH VIEWPORTS,
LABELED CC03M WITH APPROPRIATE PLATING CALLOUT AND LABEL PLACED AS SHOWN.
MAXIMUM NO OF SPLICES PER REEL: 1. SPLICES ARE NOT TO BE CONNECTED.

NUMBER OF SPLICES TO BE MARKED ON EACH REEL.

REELED PARTS TO BE INTERLEAVED WITH PAPER BETWEEN EACH LAYER OF PARTS.
ONE SPLICE IN INTERLEAF ALLOWED PER REEL. SECURELY CONNECT INTERLEAF SPLICE.
OUTER WRAP SHALL RECEIVE RB-24-0.75-P PROTECTIVE REEL BAND.

DUE TO PLATING REQUIREMENTS CONTACT SAMPLES MAY BE REMOVED INTERMITTINGLY
FROM THE BANDOLIER RESULTING IN SMALL GAPS BUT DOES NOT AFFECT FINAL COUNT.

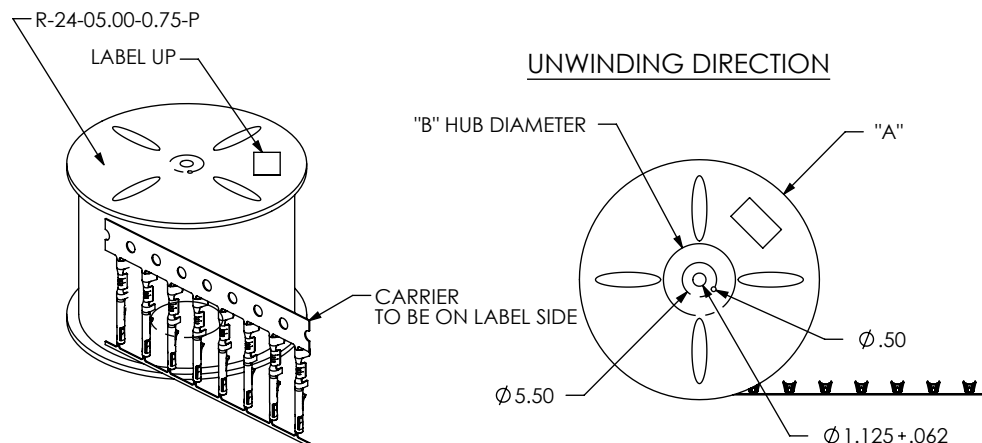


TABLE 1			
SUPPLIED	REEL PART NUMBER	"A"	"B"
-R	R-24-05.00-0.50-P	24.0	5.50
-M	MR-12-5.375-0.50-C	12.0	5.375

PROPRIETARY NOTE

THIS DOCUMENT CONTAINS INFORMATION
CONFIDENTIAL AND PROPRIETARY TO
SAMTEC, INC. AND SHALL NOT BE REPRODUCED
OR TRANSFERRED TO OTHER DOCUMENTS OR
DISCLOSED TO OTHERS OR USED FOR ANY
PURPOSE OTHER THAN THAT WHICH IT WAS
OBTAINED WITHOUT THE EXPRESSED WRITTEN
CONSENT OF SAMTEC, INC.

DO NOT SCALE DRAWING

SHEET SCALE: 6:1

samtec

520 PARK EAST BLVD, NEW ALBANY, IN 47150
PHONE: 812-944-6733 FAX: 812-948-5047
e-Mail: info@SAMTEC.com code: 55322

DESCRIPTION:

.050" C.L. DISCRETE WIRE CONTACT

DWG. NO.

CC03X-XXXX-01-XX

BY: BRATCHER 3/8/2005

SHEET 2 OF 2