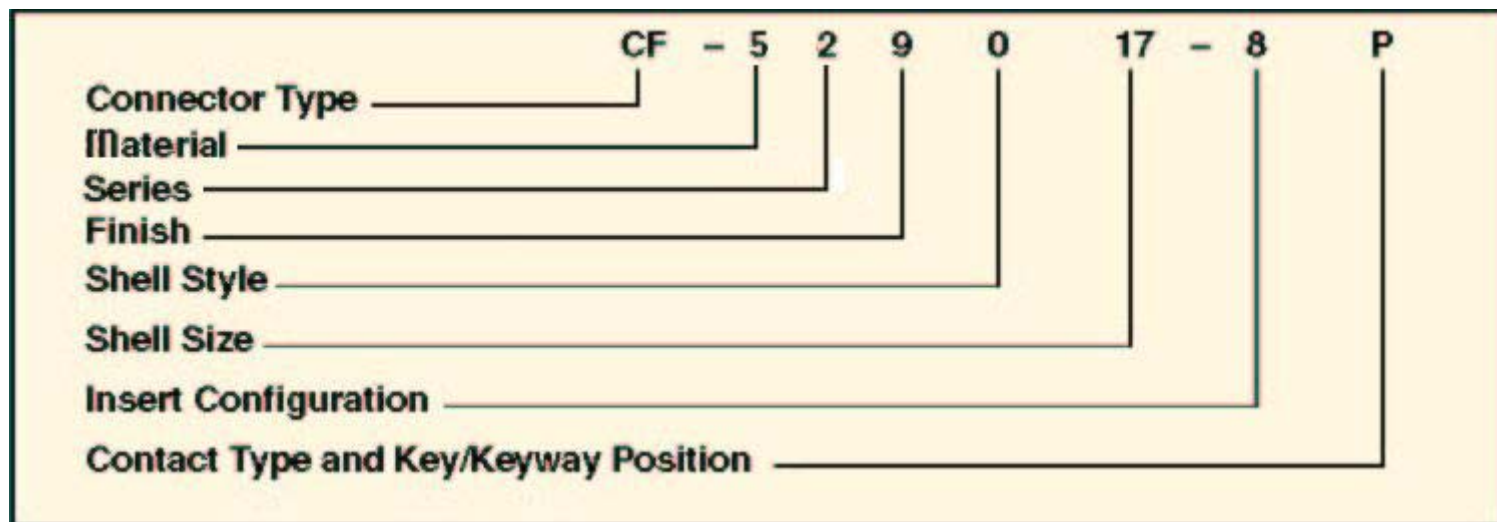


Multi-Channel Fiber Optic Cylindrical Connectors



Connector Type:

CF designates Multi-Channel Fiber Optic Connector

Material:

5 designates aluminum shell
 6 designates composite shell
 8 designates stainless steel shell

Series:

0 designates Tight Tolerance Connector
 2 designates D38999 Enhanced Fiber Optic Connector
 7 designates ARINC 801 Style Connector
 9 designates Cylindrical MT Style Connector

Finish:

4 designates electroless nickel
 5 designates unplated composite
 6 designates stainless steel
 9 designates O.D. cadmium

Shell Style:

0 designates wall mount receptacle
 2 designates box mount receptacle
 6 designates straight plug
 7 designates jam nut receptacle

Shell Size

See Insert Availability (preceding pages)

Insert Configuration

See Insert Availability (preceding pages)

Contact Type and Key/Keyway Position

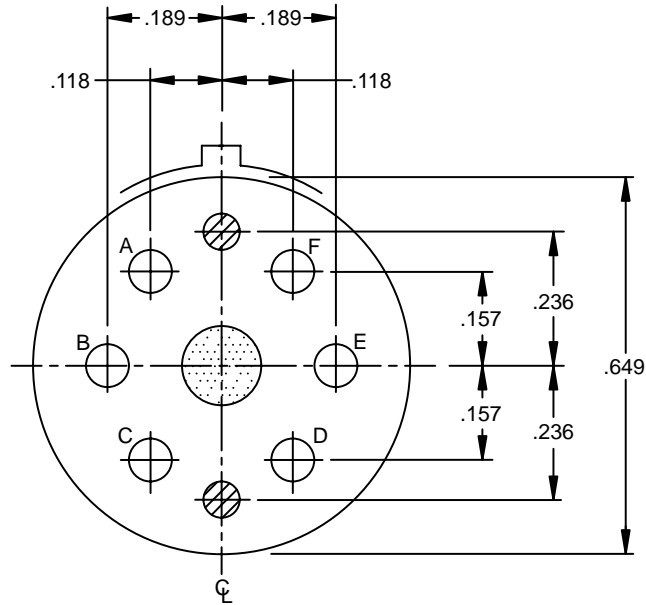
P designates pin contacts
 S designates socket contacts



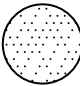
For key/keyway positioning choose alternate rotation suffix letter from the chart below.

Alternate Position Suffix

| Alternate Position | Suffix Letter | |
|--------------------|---------------|---------|
| | Pins | Sockets |
| Normal | P | S |
| A | G | H |
| B | I | J |
| C | K | L |
| D | M | N |
| E | R | T |

| | | | | | | | | | | | |
|--|---|-------|---|----|---|--|--|--|--|--|--|
| BCAG | F | BD&SG | N | BH | N | | | | | | |
| NEW DESIGN APPROVAL: P=PARTIAL, F=FULL, N=NONE | | | | | | | | | | | |



-  LOCATION OF FIBER OPTIC TERMINUS
-  LOCATION OF ALIGNMENT PIN
-  LOCATION OF HOLE FOR SLEEVE HOLDER MOUNTING SCREW

INSERT ARRANGEMENT 15-06

TECHNICAL CHANGES IDENTIFIED BY REVISION BAR.

DATE 30-APR-2003 REV (A) 09-JUN-2003

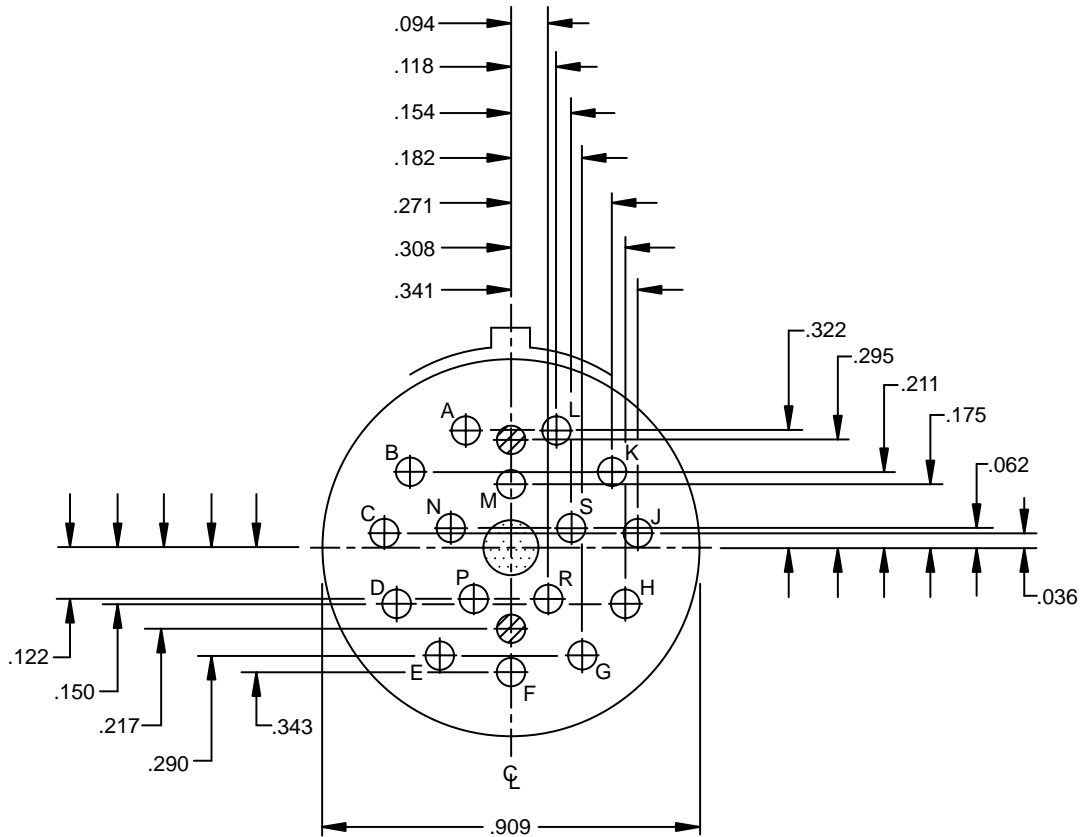
CAGE CODE 81205




BAC110AT
SH 1 OF 3

**INSERT ARRANGEMENT,
CONNECTOR, FIBER OPTIC,
CIRCULAR**

BAC110AT
SH 1 OF 3

FOR STATUS OF INACTIVATION
SEE APPLICABILITY BLOCK



-  LOCATION OF FIBER OPTIC TERMINUS
-  LOCATION OF ALIGNMENT PIN
-  LOCATION OF THREADED HOLE FOR SLEEVE INSERT MOUNTING SCREW

INSERT ARRANGEMENT 21-16

DIMENSIONING AND TOLERANCING PER ANSI Y14.5M-1994.
TOLERANCES: $\pm .002$ UNLESS OTHERWISE SPECIFIED.
DIMENSIONS IN INCHES UNLESS OTHERWISE NOTED.

TABLE I

| INSERT ARRANGEMENT NUMBER | SHELL SIZE | NUMBER OF TERMINI |
|---------------------------|------------|-------------------|
| 15-06 | 15 | 6 |
| 21-16 | 21 | 16 |

DATE 30-APR-2003 REV (A) 09-JUN-2003

CAGE CODE 81205

BAC110AT
SH 2

**INSERT ARRANGEMENT,
CONNECTOR, FIBER OPTIC,
CIRCULAR**

BAC110AT
SH 2