

SEARCH

eco|mate

Search for product attributes

New search

Search

Search Assistance

CIRCULAR CONNECTOR ECO|MATE



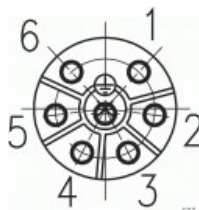
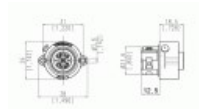
eco|mate Female receptacle, No. of contacts 6 + PE, 250 V, Termination: solder, Contact plating: gold plated

Part No. C016 30G006 200 12

Series **▶ Circular Connectors eco|mate**

Subseries **▶ Circular Connector eco|mate**

[Purchase this part](#)



COMMON CHARACTERISTICS

No. of contacts	6 + PE
-----------------	--------

ELECTRICAL CHARACTERISTICS

Rated voltage	DIN EN 60664-1 / IEC 60664-1	250 V
Rated impulse voltage	DIN EN 60664-1 / IEC 60664-1	4000V
Installation category	DIN EN 60664-1 / IEC 60664-1	III
Insulation group	DIN EN 60664-1 / IEC 60664-1	I
Insulation resistance	DIN EN 60512-2, Test 3a / IEC 60512-2, Test 3a	≥ 10 ⁸ Ω
Contact resistance	DIN EN 60512-2, Test 2a / IEC 60512-2 Test 2a	≤ 5 mΩ
Current carrying capacity	DIN EN 60512-3, Test 5b / IEC 60512-2 Test 5b	10 A / + 55 °C
Pollution degree	DIN EN 60664-1 / IEC 60664-1	3

CLIMATICAL CHARACTERISTICS

Climatic category	DIN EN 60068-1 / IEC 60068-1	40 / 125 / 56
Operating temperature		-40°C ... +125°C

MECHANICAL CHARACTERISTICS

IP degree of protection	DIN EN 60529 / IEC 60529	IP 67 / IP 65
Insertion and withdrawal force	DIN EN 60512-13-2, Test 13b / IEC 60512-13-2, Test 13b	≤ 30 N
Mechanical lifetime		? 500 mating cycles

MATERIALS

Insert	Polyamid (PA 6 / PA 6.6)
Colour	black
Contact plating	gold plated
Housing	Polyamid (PA 6 / PA 6.6)
Gasket	Neoprene

FURTHER CHARACTERISTICS

Termination	solder
Wire gauge	0,75 mm ²
Flammability	UL 94
Locking	screw

The product search requires cookies. Please change your browser settings to accept session cookies. You will find further information in [help](#).

The product search requires cookies. Please change your browser settings to accept session cookies. You will find further information in [help](#).

RELATED PRODUCTS

▶ Suitable contacts

FURTHER INFORMATION (PDF)

- ▶ Derating Curves / Order Information
- ▶ Remarks / Safety Classification
- ▶ Technical Information
- ▶ Mounting Instructions
- ▶ Catalog eco|mate



In general approvals refer to representative versions of the connector. Extent and specification of tests upon request

Datash...ct Live