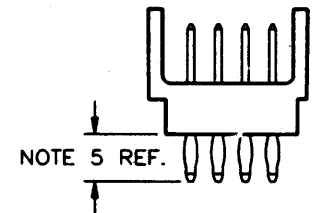
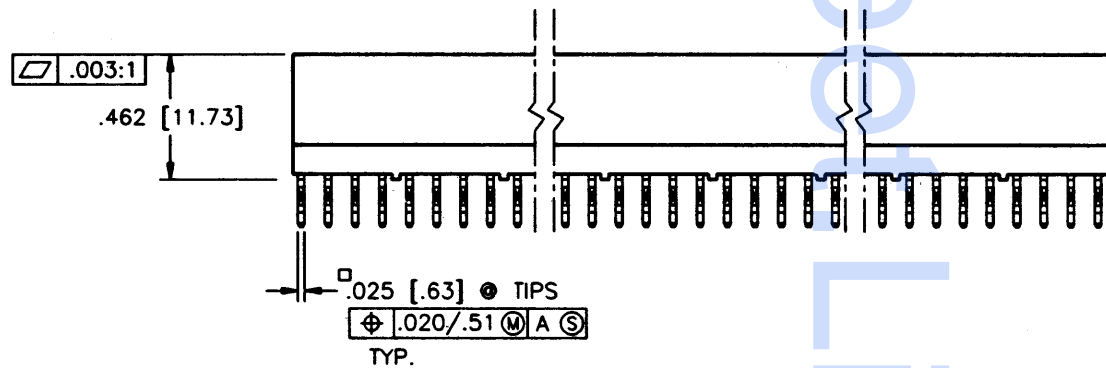
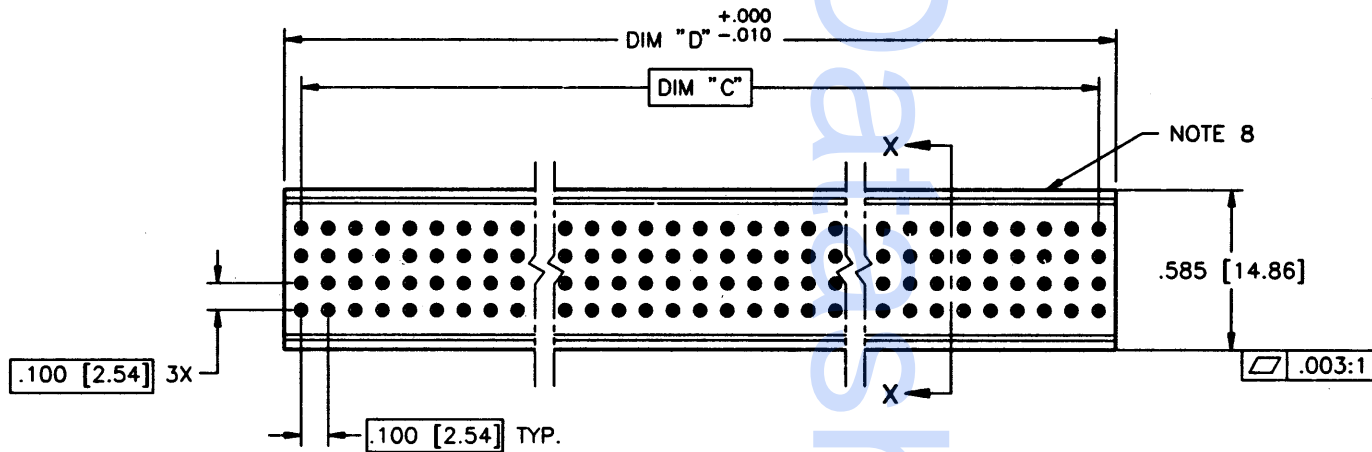


PRODUCT NUMBER
50870-XXXX

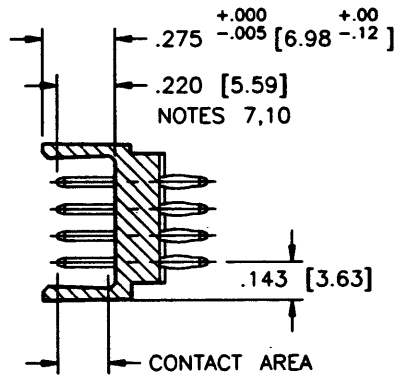


REVISIONS				SHEET INDEX	ISSUE SH NO.	A 1	A 2	MAY NOTE 3	DW G. PETERS 7/8/94	CUSTOMER COPY
REV	ECH/DDR#	BY	DATE							
A	V41078	GIP	7/6/94						J. AFTON 7/6/94	
									J. AFTON 7/11/94	
									S. CLARK 7/15/94	

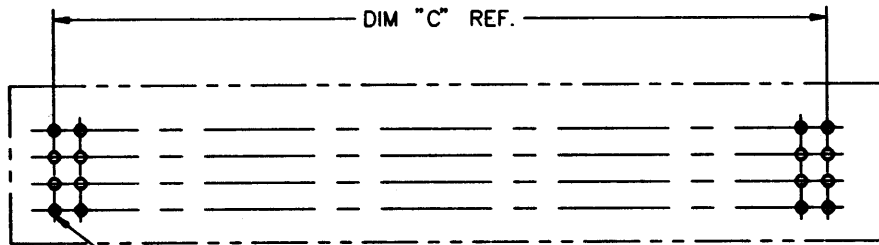
TOLERANCES UNLESS OTHERWISE SPECIFIED		FRSH	UNIT INCH
0.001 / 0.013	0.0005 / 0.0013	PRODUCT FAMILY HPC	SCALE SIZE 3:1 C
0.0005 / 0.0013	0.0002 / 0.0005	APPL	DWG. NO. 50870
ANGLES 0 & 2			SHEET 1 of 2

BERG ELECTRONICS
 4 ROW, SPEC. VERT. HDR. ASSY.
 0 G.P., SQ. CORES, OPEN ENDS
 SCALE SIZE 3:1 C
 DWG. NO. 50870
 SHEET 1 of 2

PRODUCT NUMBER	DIM.	LENGTH FORMULAS
50870-XXXXX	DIM "C"	.100/2.54 x NO. OF COLUMNS -.100/2.54
	DIM "D"	.100/2.54 x NO. OF COLUMNS +.025/.63



SECTION X-X



NOTE 6

RECOMMENDED PCB LAYOUT
(ALL HOLES LOCATED ON .100/2.54 GRID
UNLESS OTHERWISE SPECIFIED)

NOTES:

- PRODUCT NUMBERING CODE:
50870 - X XXX X
 - TAIL LENGTH (NOTE 5)
 - NO. OF POSITIONS (NOTE 2)
 - PLATING (NOTE 4)
 - BASE NUMBER
- THIS PRODUCT IS CONFIGURED IN SIZES OF 6 thru 130 COLUMNS IN INCREMENTS OF ONE.
i.e.: 6,7,8,9,.....129,130
- HOUSING MATERIAL: GLASS FILLED PPS.
PIN MATERIAL: PHOS BRONZE
- PLATING OPTIONS:
 1 = 30u"/.76u" GOLD
 2 = 50u"/1.27u" GOLD
 5 = 30u"/.76u" GXT
- TAIL LENGTH OPTIONS:
 TAIL LGTH. OPTIONS:(±.015/.38)
 A = .177/4.5 G = .250/6.35
 C = .533/13.54 P = .470/11.94 .062 PCB/SHROUD
 D = .733/18.62 L = .188/4.78 .062 PCB
- Ø.0453/1.151 DRILLED HOLE PLATED WITH .0003/.007 MIN. SnPb OVER .001/.03 to .003/.08 Cu. PLATING TO ACHIEVE A Ø.040±.003/1.02±.08 HOLE.
- TO ASSURE PROPER INSTALLATION: BERG TOOLING, AS SPECIFIED IN INSTRUCTION MANUAL 155915-001 MUST BE USED. PIN MATING LENGTH WILL BE ±.002/.05 AFTER INSTALLATION.
- "BERG" NAME, PART NUMBER AND LOT CODE TO APPEAR ON THIS SURFACE PER BUS-12-108.
- FOR DOCUMENTATION MENU, SEE BERG BUS-01-057.
- REFERENCE 50807 FOR F.M.L.B. AVAILABLE OPTIONS AND WORKSHEET.
- MANUFACTURE AS PER BUS-24-004.

REVISIONS				SHEET INDEX	ISSUE	A	DATE	BY	CHECKED	APPROVED	CUSTOMER COPY
REV	ECN/DDR	BY	DATE								
A				SH NO. 2							
TOLERANCES UNLESS OTHERWISE SPECIFIED											
LINEAR											
ANGLES											

NOTE 3	DATE	BY	CHECKED	APPROVED	CUSTOMER COPY
	7/8/94	G. PETERS			
	7/6/94	J. AFTON			
	7/11/94	J. AFTON			
	7/15/94	S. CLARK			

SCALE	SIZE	DWG. NO.	SHEET
3:1	C	50870	2 OF 2

BERG
ELECTRONICS

16 ROW, SPEC. VERT. HDR. ASSY.
0 G.P., SQ. CORES, OPEN ENDS