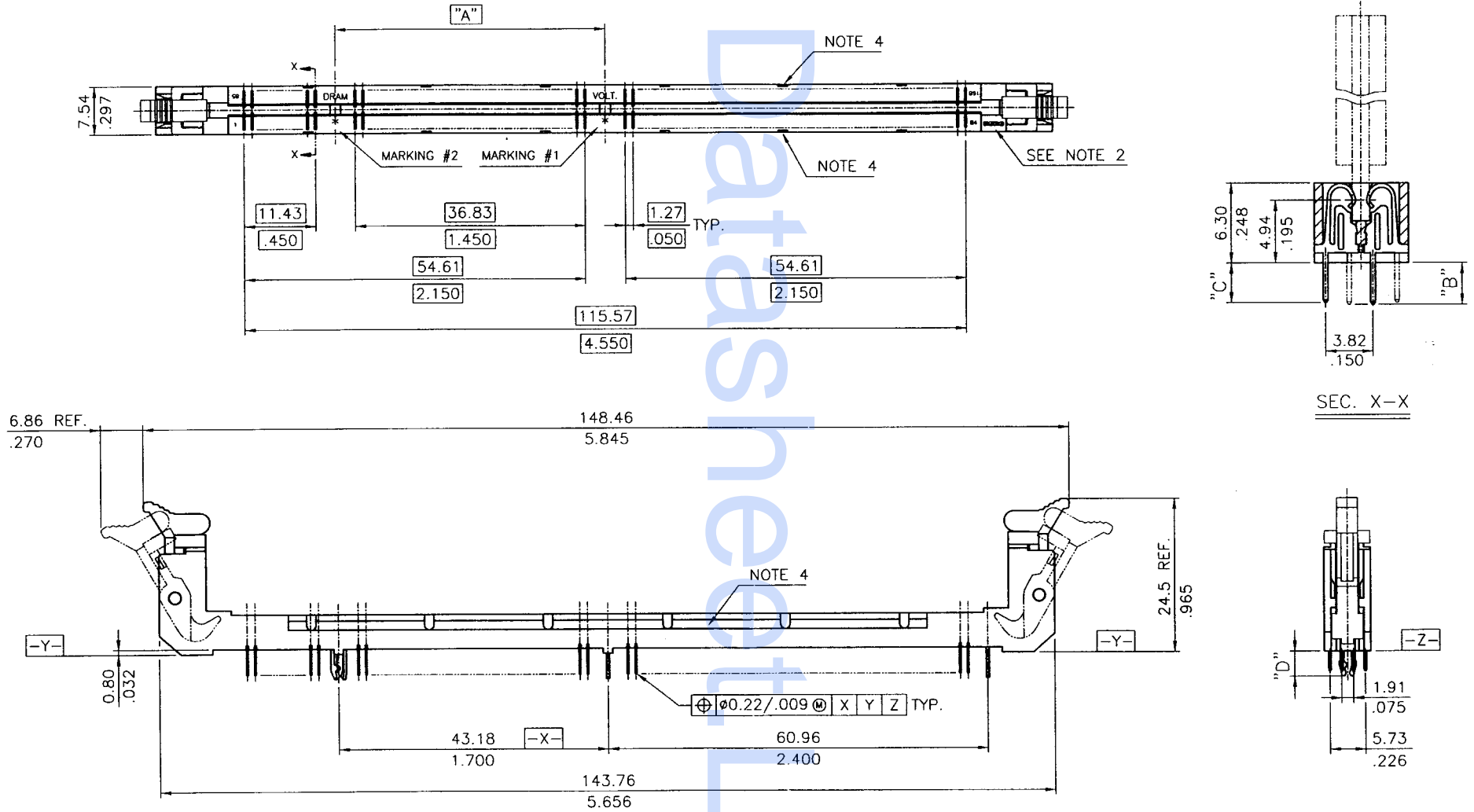


Tous droits strictement réservés. Reproduction ou communication o des tiers int
 sous quelque forme que ce soit sans autorisation écrite du propriétaire.
 propriété de c BERG ELECTRONICS.
 Droits de reproduction BERG ELECTRONICS by

BERG
 ELECTRONICS

All rights strictly reserved. Reproduction or issue to third parties in any for
 in any form without written authority from the proprietor.
 property of BERG ELECTRONICS.
 Copyright BERG ELECTRONICS by

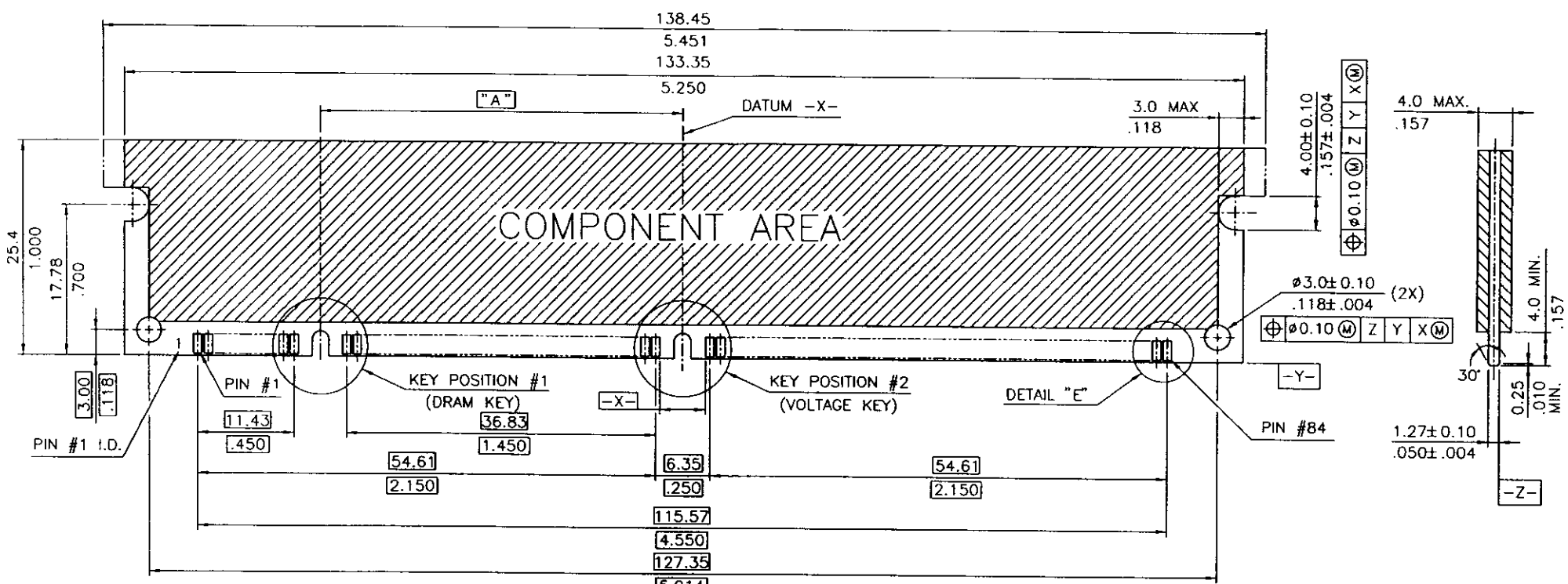


- NOTE:
- MATERIAL:
 HOUSING: LIQUID CRYSTAL POLYMER, GLASS FILLED UL94V-0 RATED, COLOR BLACK OR NATURAL.
 EJECTOR: LIQUID CRYSTAL POLYMER OR OTHER HIGH PERFORMANCE RESINS, GLASS FILLED UL94V-0 RATED, COLOR BLACK OR NATURAL.
 TERMINAL: PHOSPHOR BRONZE.
 METAL CLIP: PHOSPHOR BRONZE.
 - BERG LOGO TO BE APPROXIMATELY LOCATED AS SHOWN ON PRINT.
 - PRODUCT SPECIFICATION: GES-12-066.
 - FOR 91159-XXXXXP PARTS ONLY : BOTH SIDE SURFACE OF THE PLASTIC BODY ARE ALL FLAT, WITHOUT ANY MOLD CATCHING-UP MARK AS PRINT SPECIFIED.

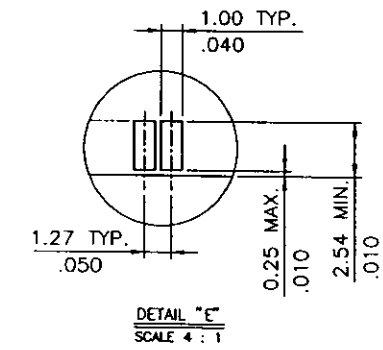
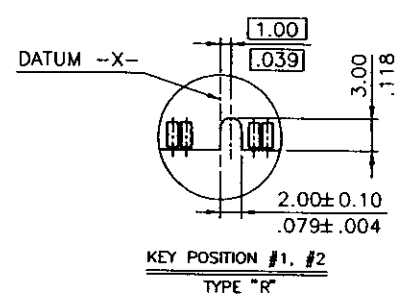
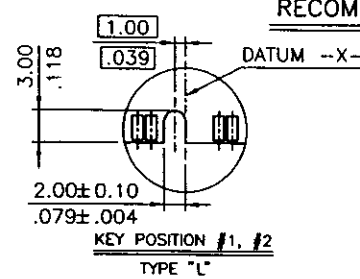
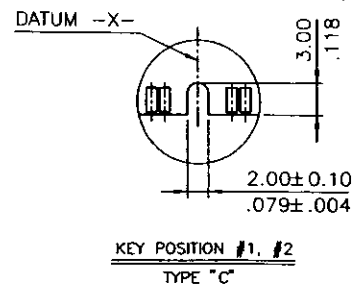
mat'l code				tolerance unless otherwise specified		CUSTOMER COPY		BERG ELECTRONICS	
rev.	ecn no.	dr	date	linear	.0 ±0.38/.015	projection	title		
H	T80186	M	W05/08/98		.00 ±0.25/.010		DIMM .050" 1-ROW, 168P		
B	T60206	R	J05/23/96		.000±0.15/.005		V/T ASS'Y METAL CLIP		
C	T60263	A	H07/02/96	angles	± 2'	unit	product family DIMM		code
D	T60372	A	H09/11/96	dr	CATHY LIN 03/28/95	mm/inch	91159		TWN
E	T60477	A	H12/06/96	engr	CATHY LIN 03/28/95	scale	1.5 : 1		sheet
F	T70070	A	H02/20/97	chr	WAYNE YU 03/28/95			1 OF 4	
G	T70154	A	H04/24/97	appd	JENN TSAO 03/28/95				
sheet revision				H	G	H	G		
index sheet				1	2	3	4		

Tous droits strictement réservés. Reproduction ou communication à des tiers sans autorisation écrite de BERG ELECTRONICS. Propriété de BERG ELECTRONICS. Droits de reproduction BERG ELECTRONICS by

All rights strictly reserved. Reproduction or issue to third parties in any form without written authority from the proprietor. Property of BERG ELECTRONICS. Copyright BERG ELECTRONICS by



RECOMMENDED MODULE LAYOUT



KEY POS. #1	KEY POS. #2	DIM."A"	DESCRIPTION
TYPE "R"	TYPE "C"	42.18 1.661	FOR UNBUFFERED DRAM, SYNC DRAM, REGISTERED SDRAM, 3.3 VOLT.
TYPE "L"	TYPE "C"	44.18 1.739	FOR OPEN, 3.3 VOLT.
TYPE "C"	TYPE "C"	43.18 1.700	FOR STANDARD DRAM, BUFFERED, 3.3 VOLT.
TYPE "R"	TYPE "L"	41.18 1.621	FOR NON-STANDARD DRAM, 5.0 VOLT.
TYPE "L"	TYPE "L"	43.18 1.700	FOR SYNC DRAM, 5.0 VOLT.
TYPE "C"	TYPE "L"	42.18 1.661	FOR STANDARD DRAM, 5.0 VOLT.

mat'l code		tolerance unless otherwise specified		CUSTOMER COPY		BERG ELECTRONICS	
rev.	ecn no.	dr	date	linear	projection	title	
G				.00 ± 0.30/.012	⊕	DIMM .050" 1-ROW, 168P V/T ASS'Y METAL CLIP	
				.000 ± 0.10/.004		product family	
				angles ± Z		code	
				dr CATHY LIN 03/28/95	unit	TWN	
				enrg CATHY LIN 03/28/95	mm/inch	sheet	
				chr WAYNE YU 03/28/95	scale	2 OF 4	
				appd JENN TSAO 03/28/95	2 : 1	91159	
sheet index	revision sheet						

Tous droits strictement réservés. Reproduction ou communication, e des tiers int
 sous quelque forme que ce soit sans autorisation écrite du propriétaire.
 Property of BERG ELECTRONICS.
 Droits de reproduction BERG ELECTRONICS by

PROD. NO.	DIM."A"	DIM."B"	DIM."C"	DIM."D"	HOUSING COLOR	RESIN	EJECTOR COLOR	RESIN	STYLE	MARKING #2	MARKING #1		
91159-1100*	42.18	2.54 .100	2.39 .094	4.0 .157	BLACK	LCP	IVORY	LCP	FOR STANDARD DRAM, 5 VOLT.	STD	5.0		
91159-1101*					BLACK		IVORY						
91159-1102*					BLACK		IVORY						
91159-1103*					BLACK		NATURAL						
91159-1110*	1.661	3.30 .130	3.15 .124		BLACK		IVORY	NYLON					
91159-1111*					BLACK		IVORY						
91159-1112*					BLACK		IVORY						
91159-1113*					BLACK		NATURAL						
91159-2100*	43.18	2.54 .100	2.39 .094		BLACK		LCP	IVORY		LCP	FOR SYNC DRAM, 5 VOLT.	SYNC	5.0
91159-2101*					BLACK			IVORY					
91159-2102*					BLACK			IVORY					
91159-2103*					BLACK			NATURAL					
91159-2110*	1.700	3.30 .130	3.15 .124	BLACK	LCP	IVORY	LCP	FOR SYNC DRAM, 5 VOLT.	SYNC	5.0			
91159-2111*				BLACK		IVORY							
91159-2112*				BLACK		IVORY							
91159-2113*				BLACK		NATURAL							
91159-3100*	41.18	2.54 .100	2.39 .094	BLACK	LCP	IVORY	LCP	FOR NON-STANDARD DRAM, 5 VOLT.	NONE	5.0			
91159-3101*				BLACK		IVORY							
91159-3102*				BLACK		IVORY							
91159-3103*				BLACK		NATURAL							
91159-3110*	1.621	3.30 .130	3.15 .124	BLACK	LCP	IVORY	LCP	FOR NON-STANDARD DRAM, 5 VOLT.	NONE	5.0			
91159-3111*				BLACK		IVORY							
91159-3112*				BLACK		IVORY							
91159-3113*				BLACK		NATURAL							
91159-4100*	43.18	2.54 .100	2.39 .094	BLACK	LCP	IVORY	LCP	FOR STANDARD DRAM, BUFFERED, 3.3 VOLT.	STD	3.3			
91159-4101*				BLACK		IVORY							
91159-4102*				BLACK		IVORY							
91159-4103*				BLACK		NATURAL							
91159-4110*	1.700	3.30 .130	3.15 .124	BLACK	LCP	IVORY	LCP	FOR STANDARD DRAM, BUFFERED, 3.3 VOLT.	STD	3.3			
91159-4111*				BLACK		IVORY							
91159-4112*				BLACK		IVORY							
91159-4113*				BLACK		NATURAL							
91159-5100*	44.18	2.54 .100	2.39 .094	BLACK	LCP	IVORY	LCP	FOR OPEN, 3.3 VOLT.	NO MARKING	3.3			
91159-5101*				BLACK		IVORY							
91159-5102*				BLACK		IVORY							
91159-5103*				BLACK		NATURAL							
91159-5110*	1.739	3.30 .130	3.15 .124	BLACK	LCP	IVORY	LCP	FOR OPEN, 3.3 VOLT.	NO MARKING	3.3			
91159-5111*				BLACK		IVORY							
91159-5112*				BLACK		IVORY							
91159-5113*				BLACK		NATURAL							
91159-6100*	42.18	2.54 .100	2.39 .094	BLACK	LCP	IVORY	LCP	FOR UNBUFFERED DRAM, SYNC DRAM, REGISTERED SDRAM, 3.3 VOLT.	NONE	3.3			
91159-6101*				BLACK		IVORY							
91159-6102*				BLACK		IVORY							
91159-6103*				BLACK		NATURAL							
91159-6110*	1.661	3.30 .130	3.15 .124	BLACK	LCP	IVORY	LCP	FOR UNBUFFERED DRAM, SYNC DRAM, REGISTERED SDRAM, 3.3 VOLT.	NONE	3.3			
91159-6111*				BLACK		IVORY							
91159-6112*				BLACK		IVORY							
91159-6113*				BLACK		NATURAL							

REMARK: 1. PROD. NO. MARK "*" SEE ABOVE PART NO. PLATING CODE DESCRIPTION.
 2. SEE DESCRIPTION UNDER PLATING FOR THE MARK "*" IN THE COLUMN OF TERMINAL PART NO.

All rights strictly reserved. Reproduction or issue to third parties in any form
 without written authority from the proprietor.
 Property of BERG ELECTRONICS.
 Copyright BERG ELECTRONICS by



mat'l code		tolerance unless otherwise specified		CUSTOMER COPY			
rev. ecn no.	dr date	linear	.0 ± 0.38 / 0.15 .00 ± 0.25 / 0.10 .000 ± 0.13 / 0.05	projection	title		
G		angles	± 2°		DIMM .050" 1-ROW, 168P V/T ASS'Y		
		dr	CATHY LIN 03/28/95	unit	product family	code	
		engr	CATHY LIN 03/28/95	mm/inch	size	TWN	
		chr	WAYNE YU 03/28/95	scale	dwg no.	sheet	
		appd	JENN TSAO 03/28/95	1 : 1	A3	4 OF 4	
sheet	revision						
index	sheet						