

PRODUCT NO
50037-XXXXX

REVISIONS			
REV	DESCRIPTION	BY	DATE
A	RELEASED	RDS	02/15/91
B	ECR V12534	SAR	10/09/91

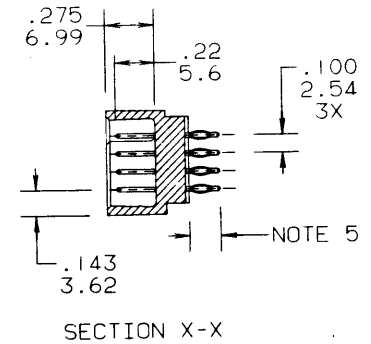
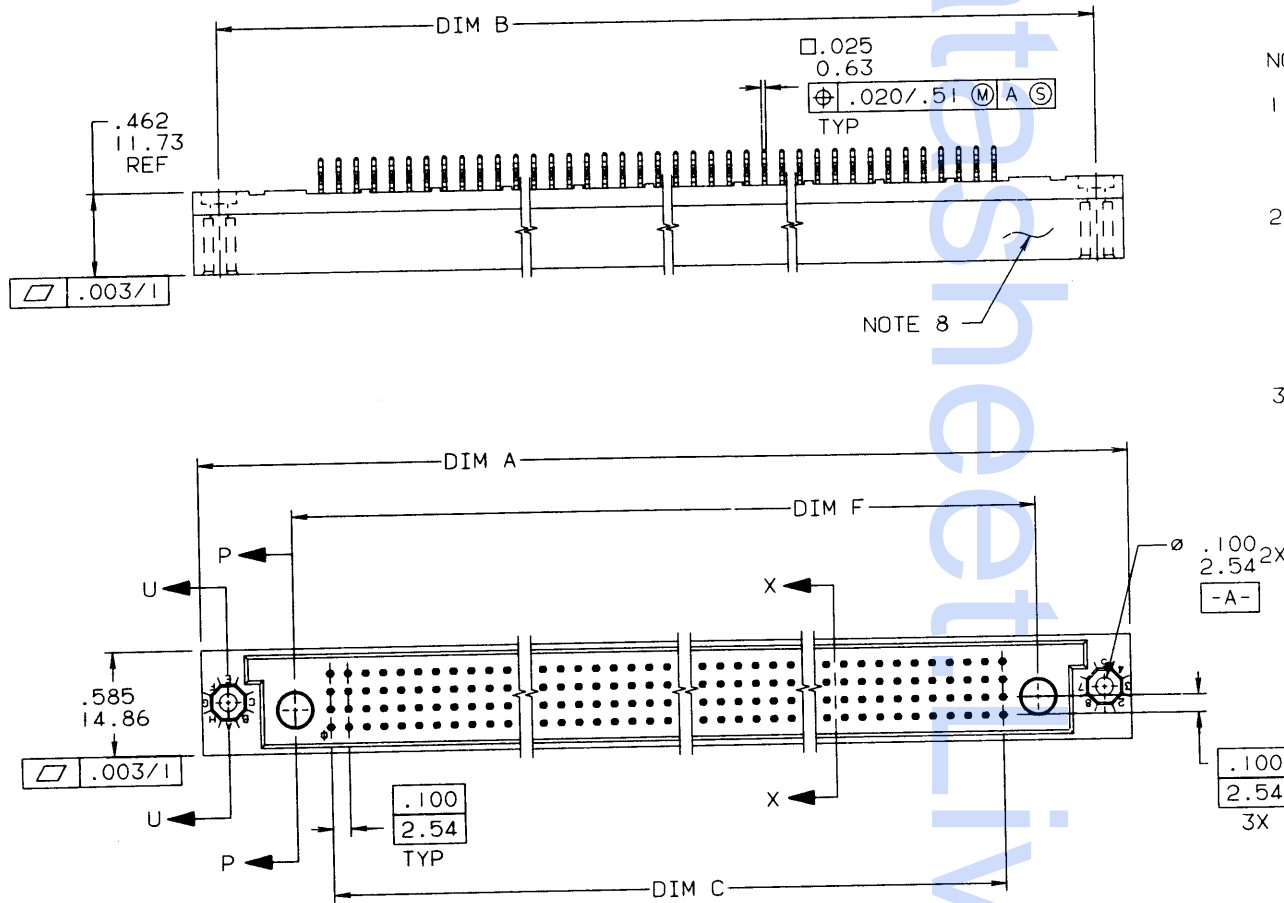
NOTES:

1 THIS PRODUCT IS CONFIGURED IN SIZE OF 10 THRU 80 COLUMNS IN INCREMENTS OF ONE.
IE: 10,11,12,13.....79,80.

2 PRODUCT NUMBERING CODE:
50037 - X XXX X
 TAIL LENGTH
 NO OF POSITIONS
 PLATING
 BASE NUMBER

3 MATERIALS:
HOUSING GLASS FILLED PPS.
PIN PHOS BRONZE

NOTES CONTINUED ON SHEET 2

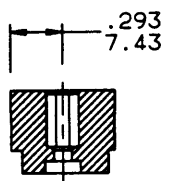


SHEET INDEX		ISSUE	B	A	CUSTOMER COPY		CODE IDENT		DuPont Electronics		DU PONT		
SH NO	I	2			22526								
MODELS				DO NOT SCALE DRAWING				TOLERANCE UNLESS OTHERWISE NOTED		MATL		DR	
-				THIRD ANGLE PROJECTION				LINEAR		-		D. SHEAFFER	
TOLERANCE UNLESS OTHERWISE NOTED				INCH/MM				FINISH		-		DATE	
.000±.005/.00±.13				.00±.01/.0±.3				-		S. CLARK		02/15/91	
.0000±.0020/.000±.051				ANGLES 0° ±2°				-		ENGR		02/15/91	
S. CLARK				S. CLARK				APPD		S. CLARK		02/15/91	
TITLE 4 ROW VERTICAL HEADERS				COMPLIANT PRESS FIT PINS				SCALE SIZE		DWG NO		CAD	
0 GUIDE PINS/2 RND AUX PORTS				2/1				C		50037		SHEET 1 OF 2	

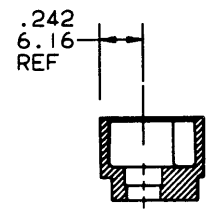
NOTE This print is the property of and embodies proprietary designs of THE DUPONT COMPANY.
No part of the design shown on this print may be used in any way without the written consent of DUPONT ELECTRONICS, New Cumberland, PA.

PRODUCT NO	DIM.	LENGTH FORMULAS
50037-XXXXX	DIM A	.100/2.54 X NO. OF COLUMNS + 1.35/34.3
	DIM B	.100/2.54 X NO. OF COLUMNS + 1.05/26.7
	DIM C	.100/2.54 X NO. OF COLUMNS - .10/.25
	DIM F	.100/2.54 X NO. OF COLUMNS + .30/7.6

REVISIONS			
REV	DESCRIPTION	BY	DATE
A			



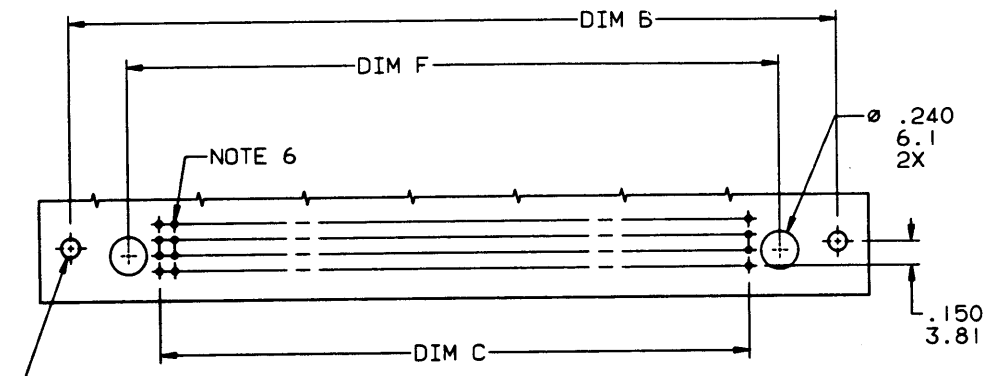
SECTION U-U



SECTION P-P

NOTES CONTINUED FROM SHEET 1

- 4 PLATING, CONTACT AREA OPTIONS:
 1 = 30μ"/.76μ GOLD 5 = 30μ"/.76μ GXT
 3 = 50μ"/1.27μ GOLD 6 = 15μ"/.38μ GOLD
- ⑤ TAIL LENGTH OPTIONS: (LENGTHS REF ONLY)
 A = .177/4.5 P = .470/11.94 .062 PCB/SHROUD
 C = .533/13.54 L = .188/4.78 .062 PCB
 D = .733/18.62 M = .671/17.04 .062 PCB
 G = .250/6.35
- ⑥ Ø.0453/1.151 DRILLED HOLE PLATED WITH .0003/.007 MIN SnPb OVER .001/.03 TO .003/.08 Cu. PLATING TO ACHIEVE A Ø.040±.003/1.02±.08 HOLE.
- 7 TO ASSURE PROPER INSTALLATION; DUPONT TOOLING, AS SPECIFIED IN INSTRUCTION MANUAL 155915-001, MUST BE USED. PIN MATING LENGTH WILL BE ±.002/.05 AFTER INSTALLATION.
- ⑧ "DUPONT", DUPONT P/N, AND LOT CODE TO APPEAR ON THIS SURFACE.
- 9 PACKAGING PER BUS-14-143.
- 10 FOR PRODUCT PERFORMANCE SEE DUPONT PRODUCT SPECIFICATION NUMBER BUS-12-090.



RECOMMENDED PCB LAYOUT
 ALL HOLES LOCATED ON .100/2.54 GRID
 UNLESS OTHERWISE SPECIFIED

SHEET INDEX		ISSUE	-	-											CUSTOMER COPY	DuPont Electronics 	
		SH NO	1	-											CODE IDENT 22526		
MODELS		DO NOT SCALE DRAWING			TOLERANCE UNLESS OTHERWISE NOTED		INCH/MM		MATL		DR		DATE		TITLE 4 ROW VERTICAL HEADERS COMPLIANT PRESS FIT PINS 0 GUIDE PIN/2 RND AUX PORTS		
		THIRD ANGLE PROJECTION			LINEAR		.00±.01/.0±.3		-		D. SHEAFFER		02/15/91				
TABULATION SHEETS REQUIRED		YES			INCH		.000±.005/.00±.13		FINISH		CHK		02/15/91		SCALE SIZE DWG NO CAD SHEET 2/1 C 50037 2		
NO		MM			.0000±.0020/.000±.051		ANGLES 0° ±2°		-		ENGR		02/15/91				
											APPD		02/15/91				

NOTE: This print is the property of and embodies proprietary designs of THE DUPONT COMPANY. No part of the design shown on this print may be used in any way without the written consent of DUPONT ELECTRONICS, New Cumberland, PA.

FORM E-3003C REV 12/89