

Mini D Ribbon (MDR) 101 Series 0.050" Wiremount Plug

Insulation: Glass-reinforced polyester (PBT). **Flammability:** UL 94 V-0. **Plating:** 30" min. gold in wiping area. **Current Rating:** 1 Amp. **Temperature Rating:** -20°C to +85°C. Recommended for termination to twisted pair of flat cable with maximum conductor Outside Diameter of 0.026" ±0.003.



- ▶ Wiper-on-Wiper Contact for Reliable Repetitive Plugging
- ▶ MDR Digital LCD Interface as a 20- or 26-Contact Connector
- ▶ Accepts a Wide Variety of Cable Constructions Including Flat, Round, Twisted Pair and Twinax Cables (28 AWG Stranded, 30 AWG Solid)

Stock No.	Mfr.'s Type	No. of Contacts	EACH	
			1-9	10-24
70114228	10114-6000EC	14	3.67	—
70114229	10120-6000EC	20	4.49	4.11
70114230	10126-6000EC	26	4.64	4.25
70114231	10136-6000EC	36	5.56	5.10
70114232	10150-6000EC	50	5.60	5.15
70114233	10168-6000EC	68	5.90	5.78

Mini D Ribbon (MDR) 103 Series 0.050" Plastic Shielded Junction Shell for Round Cable



Compatible with 101XX-600EC Plug.

- ▶ Durable One-Piece Plastic Boot Over Two-Piece Metal Junction Shell for Straight Round Cable
- ▶ Quick-Release Latching
- ▶ MDR Digital LCD Interface as a 20- or 26-Contact Connector
- ▶ Beige in Color

Stock No.	Mfr.'s Type	No. of Contacts	EACH	
			1-9	10-24
70114258	10314-3210-000	14	4.17	3.83
70114259	10320-3210-000	20	4.03	3.75
70114260	10326-3210-000	26	3.69	3.38
70114261	10336-3210-000	36	3.19	2.96
70114262	10340-3210-000	40	4.27	3.91
70114263	10350-3210-000	50	3.88	3.55
70114264	10368-3210-000	68	3.36	3.12

Mini D Ribbon (MDR) 101 Series 0.050" Solder Plug



- ▶ Solder Plug Shielded I/O Connector
- ▶ Accepts Wide-Variety of Discrete Wire Cable Types AWG 24-30
- ▶ Soldering Wire Contact Cup Requires No Special Tooling
- ▶ Ribbon-Type Contact; Industry Preferred
- ▶ Reliable Repetitive Plugging/Unplugging

Stock No.	Mfr.'s Type	No. of Contacts	EACH	
			1-24	25-49
70114394	10114-3000PE	14	5.75	5.00
70114395	10120-3000PE	20	6.20	5.70
70114396	10126-3000PE	26	6.94	6.36
70114397	10136-3000PE	36	6.23	5.78
70114398	10140-3000PE	40	6.07	5.90
70114399	10150-3000PE	50	8.33	7.63

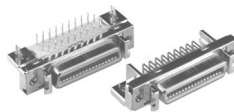
Mini D Ribbon (MDR) 103 Series 0.050" Junction Shell

- ▶ Plastic Solder Plug Junction Shell — Non-Shielded
- ▶ Design Features Durable Two-Piece Glass Reinforced Polyester Backshell With Ground Strap (Compatible With 101XX-3000VE Plug)
- ▶ Round Straight Exit
- ▶ Reliable Metal Strain Relief Clamp Provides Grounding for Cable Shield
- ▶ Quick Release Metal Latching Mechanism



Stock No.	Mfr.'s Type	No. of Contacts	EACH	
			1-9	10-24
70114677	10314-52FO-008	14	6.23	5.71
70114063	10320-52FO-008	20	6.42	5.88
70114678	10326-52FO-008	26	6.60	6.05
70114052	10336-52FO-008	36	6.68	6.12
70114679	10350-52FO-008	50	6.86	6.29

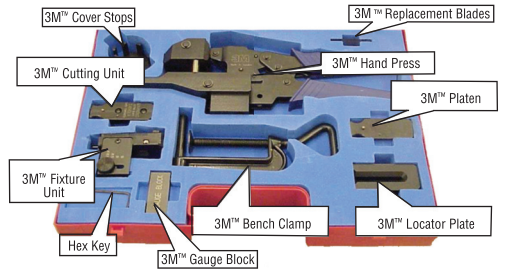
Mini D Ribbon (MDR) 102 Series 0.050" Boardmount Thru-Hole Right-Angle Receptacle, Shielded



- ▶ Rugged Die Cast Metal Case Construction
- ▶ Screw or Ground Lock for Reliable PCB Retention
- ▶ Wiper-on-Wiper Contact for Reliable Repetitive Plugging
- ▶ Interface Latch Design for Connection Stability

Stock No.	Mfr.'s Type	No. of Contacts	EACH	
			1-9	10-24
70114449	N10214-5212PC	14	4.59	—
70114450	N10220-5212PC	20	4.74	—
70114451	N10226-5212PC	26	5.26	4.88
70114452	N10236-5212PC	36	5.88	5.69

Mini D Ribbon (MDR) IDC Hand Tool Kit



Complete portable tool kit for terminating cable to MDR IDC plug connectors, 14-68 positions.

Stock No.	Mfr.'s Type	Description	EACH
70039964	3829	(MDR) IDC Hand Tool Kit	2987.14

Mini D Ribbon (MDR) 102 Series 0.050" Boardmount Receptacles



Insulation: Glass-Reinforced Polyester. **Flammability:** UL 94 V-0. **Current Rating:** 1 Amp. **Temperature Rating:** -55°C to +105°C.

- ▶ Wiper-on-Wiper Contact for Reliable Repetitive Plugging
- ▶ Interface Latch Design for Connection Stability
- ▶ Vertical-IEEE 1284-C Interface As a 36-Contact Connector
- ▶ 36-Position Used for IEEE 1284-C Interface
- ▶ Right-Angle MDR Digital LCD Interface As a 20- or 26-Contact Connector

Surface Mount Vertical Receptacles — Shielded

Stock No.	Mfr.'s Type	No. of Contacts	EACH	
			1-4	5+
70114400	10220-2210PE	20	5.77	5.62
70114401	10226-2210PE	26	6.29	5.88
70114402	10236-2210PE	36	6.29	6.11

Surface Mount Right-Angle Receptacle — Shielded

Stock No.	Mfr.'s Type	No. of Contacts	EACH	
			1-4	5+
70114403	10214-1210PE	14	5.31	—
70114405	10220-1210PE	20	7.59	6.90
70114406	10226-1210PE	26	5.42	5.27
70114407	10240-1210PE	40	6.52	6.33
70114408	10250-1210PE	50	6.83	—

Thru-Hole Right-Angle Receptacles — Shielded

Stock No.	Mfr.'s Type	No. of Contacts	EACH	
			1-4	5+
70114409	10220-55H3PC	20	3.06	—
70114410	10236-55H3PC	36	3.10	—
70114411	10250-55H3PC	50	4.64	4.25
70114412	10268-55H3PC	68	4.74	—

Mini D Ribbon (MDR) 102 Series 0.050" Boardmount Straight Compliant Pin Receptacle



- ▶ Dependable Eye-of-the-Needle Design Compliant Section
- ▶ Vertical Shielded I/O Receptacle
- ▶ Rugged Die Cast Metal Lockstand
- ▶ Reliable Ribbon-Type Contact Design
- ▶ 36-Position Used for IEEE 1284-C Interface

Stock No.	Mfr.'s Type	No. of Contacts	EACH	
			1-9	10-24
70114680	10214-R21TS	14	6.88	6.67
70114681	10226-R21TS	26	6.12	—
70114682	10236-R21TS	36	7.27	7.04
70114683	10250-R21TS	50	6.92	—

Mini D Ribbon (MDR) 102 Series 0.050" Thru-Hole Vertical Shielded Receptacles



- ▶ Wiper-on-Wiper Contact for Reliable Repetitive Plugging
- ▶ Rugged Die Cast Metal Case Construction
- ▶ Screw Lock for Reliable PCB Retention
- ▶ Interface Latch Design for Connection Stability
- ▶ 36-Position Used for IEEE 1284-C

Stock No.	Mfr.'s Type	No. of Contacts	EACH	
			1-4	5+
70114252	10214-6212PC	14	3.30	3.06
70114253	10220-6212PC	20	3.59	3.34
70114424	10226-6212PC	26	4.23	3.88
70114254	10236-6212PC	36	4.36	4.00
70114255	10240-6212PC	40	4.30	3.72
70114257	10250-6212PC	50	4.24	3.94
70114256	10268-6212PC	68	4.61	—