



<b>LA4126, 4126T</b>	monolithic linear IC	CIRCUIT DRAWING No.2063
2-CHANNEL AF POWER AMP. FOR TAPE RECORDER, RADIO		 3009A


**Features**

- Built-in 2 channels enabling use in stereo and bridge amplifier applications.
- High output LA4126: 2.4W typ./channel,  $V_{CC}=9V$ ,  $R_L=4\Omega$ , and 7.7W typ./bridge amplifier,  $V_{CC}=9V$ ,  $R_L=4\Omega$ .  
LA4126T: 4.2W typ./channel,  $V_{CC}=12V$ ,  $R_L=4\Omega$ , and 9.0W typ./bridge amplifier,  $V_{CC}=9V$ ,  $R_L=8\Omega$ .
- Low switching distortion at high frequencies.
- Minimum number of external parts required: 9 pcs. min. (Stereo/bridge).
- Small pop noise at the time of power supply ON/OFF due to built-in muting circuit.
- Good ripple rejection due to built-in ripple filter.
- Soft tone at the time of output saturation.
- Good channel separation.
- Voltage gain fixed at 45dB (Bridge: 51dB). Variable voltage gain available with external resistor added.
- Pins for adjusting high frequency characteristics.
- Easy to design radiator fin.

<b>LA4140</b>	monolithic linear IC	CIRCUIT DRAWING No.2065
0.5W TYP AF POWER AMP. FOR RADIO OR TAPE RECORDER		 3017B


**Features**

- 0.5W typ output power/ $V_{CC}=6V$ ,  $R_L=8\Omega$ , THD=10%.
- 9pin SEP permitting sets to be small-sized and eliminating the need for heat sink.
- Small quiescent current.
- Wide operation supply voltage range:  $V_{CC} = 3.5$  to 12V

<b>LA4145, 4146</b>	monolithic linear IC	CIRCUIT DRAWING No.2066
0.6 TO 0.9W AF POWER AMP.		 3017B

**Features**

- The LA4145 is especially suited for use in cassette tape recorder, radio cassette, stereo cassette player applications; the LA4146 is especially suited for use in mini musical instrument applications.
- Pin compatible with the LA4140, 4142 and minimum number of external parts required
- Output power
- Small quiescent current
- Voltage gain fixed at 50dB
- Variable voltage gain available with external resistor added
- Small pop noise at  $V_{CC}$  ON/OFF mode
- Soft tone at output saturation mode

<b>LA4147</b>	monolithic linear IC	CIRCUIT DRAWING No.2067
0.6 TO 0.9W AF POWER AMP		 3017B

**Use**

- The LA4147 is especially suited for use in cassette tape recorder, radio cassette, stereo cassette player applications.

**Features**

- 0.6W typ/ $V_{CC}=6.0V$ ,  $R_L=8\Omega$ , THD=10%  
0.9W typ/ $V_{CC}=6.0V$ ,  $R_L=4\Omega$ , THD=10%
- Minimum number of external parts required
- Soft clip
- Small pop noise at  $V_{CC}$  ON/OFF mode
- Voltage gain fixed at 50dB  
An external resistor can be connected to reduce this value.

LA 4 1 2 6 T	130	DIP	18H	3009A	2063	4.2W typ 2-Channel (9W/8Ω typ for Br.)	12	4.2×2/10.4	45×2	1.5/0.25	60
LA 4 1 8 5 T	132	SEP	14H	3023A	2073	4.2W typ 2-Channel (9W/8Ω typ for Br.)	12	4.2×2/10.4	45×2	1.5/0.25	60
LA 4 5 0 0	135	DIP	20H	3037A	2083	5.3W typ 2-Channel (9.5W/12V, 6Ω for Br.)	12	5.3×2/10.3	50×2	1.5/2V	30
LA 4 5 0 5	136	DIP	20H	3037A	2083	8.5W typ 2-Channel (16W/15V, 6Ω for Br.)	15	8.5×2/10.3	50×2	1.5/2V	30
LA 4 5 0 7	136	SEP	14H	3023A	2082	8.5W typ 2-Channel (16W/15V, 6Ω for Br.)	15	8.5×2/10.3	50×2	1.5/2V	30
LA 4 5 0 8	136	SEP	14H	3023A	2084	8.5W typ 2-Channel (16W/15V, 6Ω for Br.)	15	8.5×2/10.3	50×2	1.5/2V	30
※LA 4 5 4 0	138	SEP	18	-	2088	18W, Br. OLC Only (18W/15V, 4Ω)	15	18/10.4	46	0.1typ/2W	56typ
LA 4 4 2 2	134	SEP	10F	3018A	2078	5.8W typ AF Power Amp for Car Stereo, Car Radio	13.2	5.8/10.4	53	2.0/1	80
LA 4 4 4 0	134	SEP	14H	3023A	2079	6.0W typ 2-Channel (19W typ for Br.)	13.2	6.0×2/10.4	51.5×2	1.0/1	200
LA 4 4 4 5	134	SEP	12H	3049A	2080	5.5W typ 2-Channel	13.2	5.5×2/10.4	51.5×2	1.0/1	75typ
LA 4 4 6 0	135	SEP	10H	3024A	2081	12W typ AF Power Amp for Car Stereo, Car Radio (Br. only)	13.2	12/10.4	51	1.0/1	120
LA 4 4 6 1	135	SEP	10H	3024A	2081	12W typ AF Power Amp for Car Stereo, Car Radio (Br. only)	13.2	12/10.4	51	1.0/1	120
LA 4 1 7 0	131	DIP	14T	3005A	2070	2-Channel Amp for Headphone	14	-	9×2	1/0.1V	15
LA 4 1 7 5	131	DIP	14T	3005A	2071	2-Channel Amp for Recording Output, Headphone	12	-	38×2	0.5/1V	15
LA 4 5 2 0	137	DIP	20S	3021B	2086	2-Channel Preamp + Power Amp for Headphone	4.5to6	Pre 1V/1.10K Power 1V/1.32	35×2 45×2	-	25
○LA 4 5 3 0 M	137	MFP	20	3036B	2087	2-Channel Amp for Headphone	3	33m/10.32	45×2	0.2typ/5mW	8typ
LA 4 5 3 0 S	137	SEP	16	3020A	2087	2-Channel Amp for Headphone	3	33m/10.32	45×2	0.2typ/5mW	8typ
○LA 4 5 6 0 M	138	MFP	24	3045A	2090	Auto Reverse 2-Channel Preamp + Power Amp for Headphone	4.5to6	-	(35+45)×2	-	10typ

## ALL IN ONE/MONAUROAL AF POWER AMP'S (thick film hybrid integrated circuit)

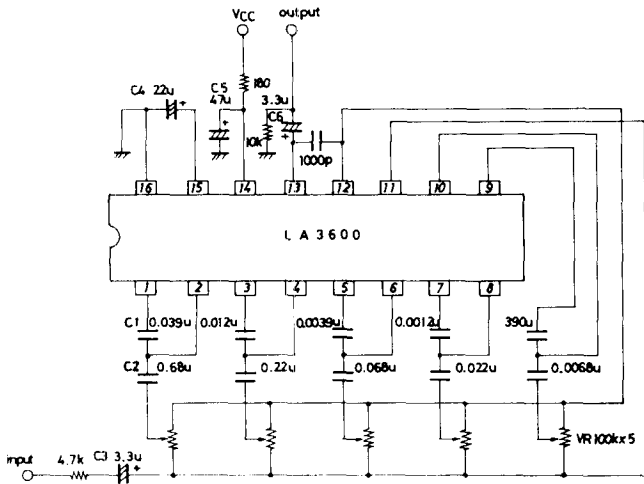
### ●STK075 SERIES

Type Number	Page	Case			Circuit Drawing No.	Circuit Functions & Applications ★Dual-Supply Operation	Recommended $V_{CC}, R_L$ [V], [Ω]	Main Characteristics/ $T_a=25^\circ\text{C}$ , recommended operating conditions			
		Package	Pins	Package No.				$I_{CCO}$ [mAmax]	$P_o/THD$ [Wmin/%]	$THD/P_o$ [%max/W]	f response [Hz]
STK077	255	SEP	10	4007	6004	★ 20Wmin AF Power Amp	±22.0.8	100	20/0.3	0.3/0.1~20	10 to 100k
STK078	255	SEP	10	4007	6004	★ 24Wmin AF Power Amp	±25.0.8	100	24/0.2	0.2/0.1~24	10 to 100k
STK080	255	SEP	10	4007	6004	★ 30Wmin AF Power Amp	±27.0.8	100	30/0.2	0.2/0.1~30	10 to 100k
STK082	255	SEP	10	4007	6004	★ 35Wmin AF Power Amp	±30.0.8	100	35/0.2	0.2/0.1~35	10 to 100k
STK084	255	SEP	10	4007	6005	★ 50Wmin AF Power Amp	±35.0.8	100	50/0.2	0.2/1~50	10 to 100k
STK085-105	255	SEP	10	4030	6005	★ 60Wmin AF Power Amp	±38.0.8	100	60/0.2	0.2/1~60	10 to 100k
STK086	255	SEP	10	4007	6005	★ 70Wmin AF Power Amp	±42.0.8	100	70/0.2	0.2/1~70	10 to 100k

(Note) Type Numbers for  $T_c=105^\circ\text{C}$  are also available.

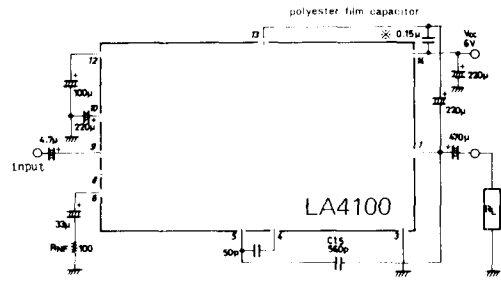
2061:LA3600

SAMPLE APPLICATION CIRCUIT



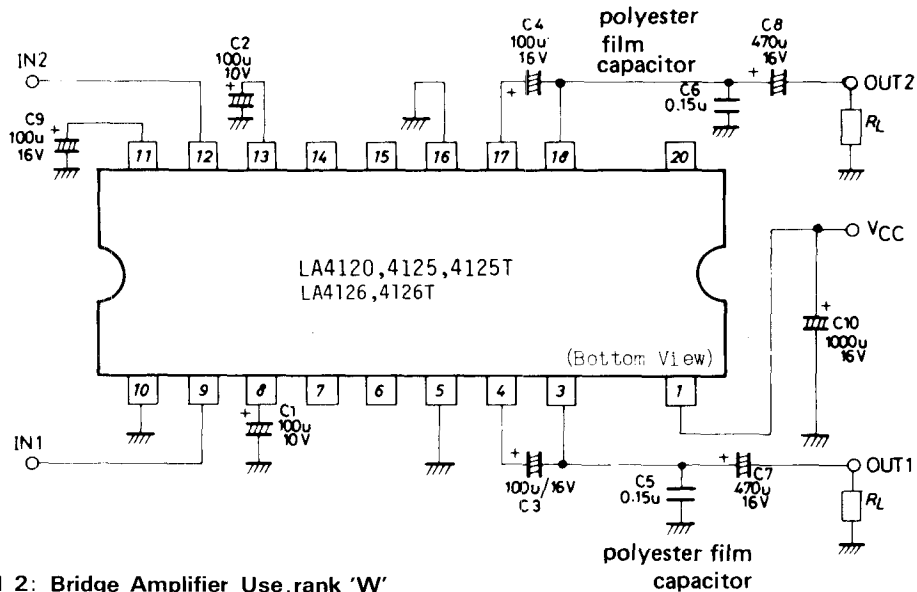
2062:LA4100,4101,4102

APPLICATION: AF Power Amplifier for Radio or Tape Recorder when LA4100 used.



2063:LA4120,4125,4125T,4126,4126T

APPLICATION 1: Stereo Amplifier



APPLICATION 2: Bridge Amplifier Use rank 'W'

