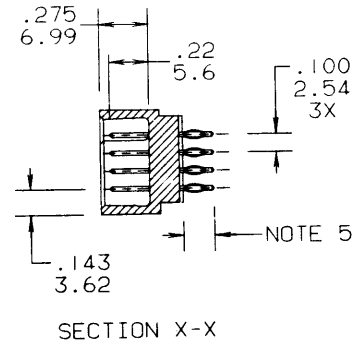
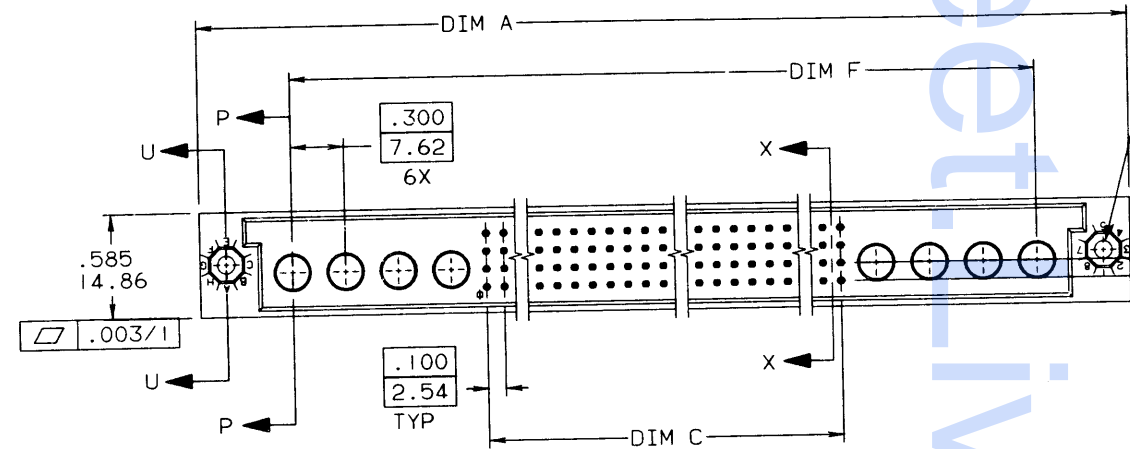
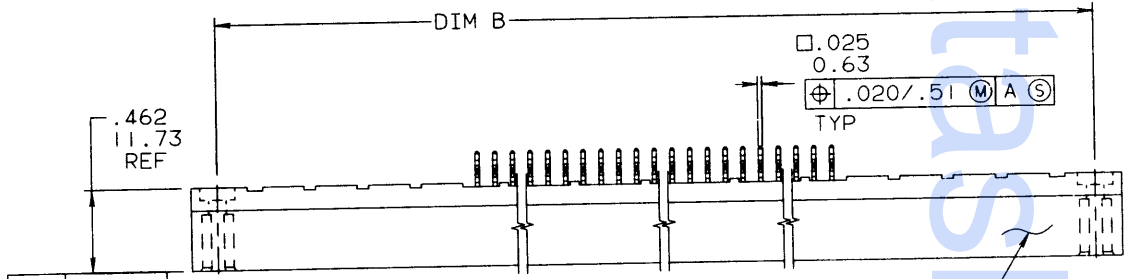


REVISIONS			
REV	DESCRIPTION	BY	DATE
A	RELEASED	RDS	02/15/91
B	ECR V12534	SAR	10/09/91

PRODUCT NO
50040-XXXXX



NOTES:

1 THIS PRODUCT IS CONFIGURED IN SIZE OF 10 THRU 80 COLUMNS IN INCREMENTS OF ONE. IE: 10,11,12,12,.....79,80.

2 PRODUCT NUMBERING CODE:
50040 - X XXX X
 TAIL LENGTH
 NO OF POSITIONS
 PLATING
 BASE NUMBER

3 MATERIALS:
HOUSING GLASS FILLED PPS.
PIN PHOS BRONZE

NOTES CONTINUED ON SHEET 2

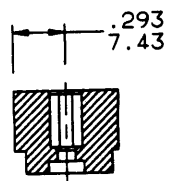
SHEET INDEX										ISSUE		B	A	CUSTOMER COPY										CODE IDENT		22526		DuPont Electronics		DU PONT							
MODELS										SH NO		1	2	DO NOT SCALE DRAWING										DATE		02/15/91		TITLE 4 ROW VERTICAL HEADERS		COMPLIANT PRESS FIT PINS		0 GUIDE PINS/8 RND AUX PORTS					
TOLERANCE UNLESS OTHERWISE NOTED										INCH/MM		MATERIAL										DR		D.SHEAFFER		DATE		02/15/91		SCALE		SIZE		DWG NO		CAD	
LINEAR										.00±.01/.0±.3		FINISH										CHK		S.CLARK		DATE		02/15/91		2/1		C		50040		SHEET 1 OF 2	
THIRD ANGLE PROJECTION										.000±.005/.00±.13		MATERIAL										ENGR		S.CLARK		DATE		02/15/91									
TAPILATION SHEETS REQUIRED										.0000±.0020/.000±.051		MATERIAL										APPD		S.CLARK		DATE		02/15/91									
YES										ANGLES 0° ±2°																											
NO																																					

NOTE This print is the property of and embodies proprietary designs of THE DUPONT COMPANY. No part of the design shown on this print may be used in any way without the written consent of DUPONT ELECTRONICS, New Cumberland, PA.

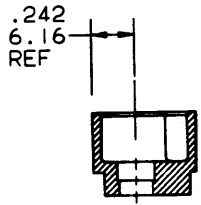
FORM E-3067C REV. 12/89

PRODUCT NO	DIM.	LENGTH FORMULAS
50040-XXXXX	DIM A	.100/2.54 X NO. OF COLUMNS + 3.15/80
	DIM B	.100/2.54 X NO. OF COLUMNS + 2.85/72.4
	DIM C	.100/2.54 X NO. OF COLUMNS - .10/.25
	DIM F	.100/2.54 X NO. OF COLUMNS + 2.10/53.3

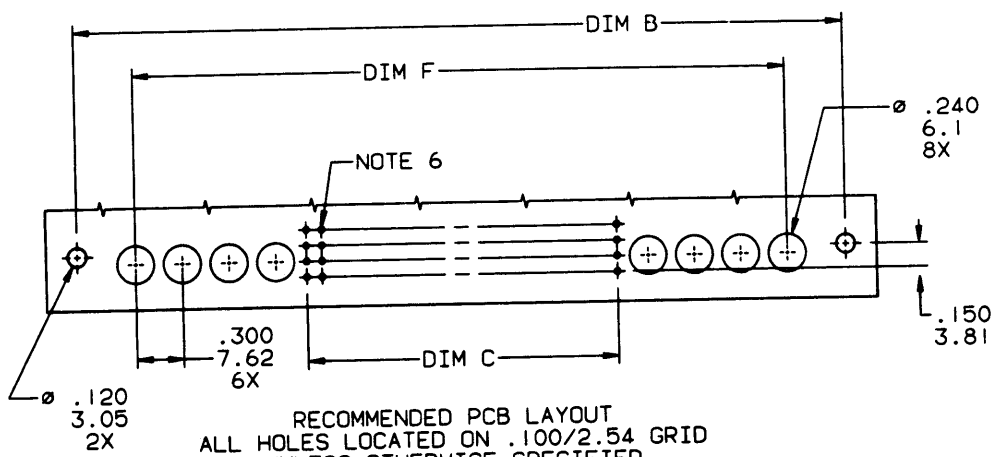
REVISIONS			
REV	DESCRIPTION	BY	DATE
A			



SECTION U-U




SECTION P-P



RECOMMENDED PCB LAYOUT
ALL HOLES LOCATED ON .100/2.54 GRID
UNLESS OTHERWISE SPECIFIED

NOTES CONTINUED FROM SHEET 1

- 4 PLATING, CONTACT AREA OPTIONS:
1 = 30μ"/.76μ GOLD 5 = 30μ"/.76μ GXT
3 = 50μ"/1.27μ GOLD 6 = 15μ"/.38μ GOLD
- ⑤ TAIL LENGTH OPTIONS: (LENGTHS REF ONLY)
A = .177/4.5 P = .470/11.94 .062 PCB/SHROUD
C = .533/13.54 L = .188/4.78 .062 PCB
D = .733/18.62 M = .671/17.04 .062 PCB
G = .250/6.35
- ⑥ Ø.0453/1.151 DRILLED HOLE PLATED WITH .0003/.007
MIN SnPb OVER .001/.03 TO .003/.08 Cu. PLATING
TO ACHIEVE A Ø.040±.003/1.02±.08 HOLE.
- 7 TO ASSURE PROPER INSTALLATION; DUPONT TOOLING,
AS SPECIFIED IN INSTRUCTION MANUAL 155915-001,
MUST BE USED. PIN MATING LENGTH WILL BE
±.002/.05 AFTER INSTALLATION.
- ⑧ "DUPONT", DUPONT P/N, AND LOT CODE
TO APPEAR ON THIS SURFACE.
- 9 PACKAGING PER BUS-14-143.
- 10 FOR PRODUCT PERFORMANCE SEE DUPONT
PRODUCT SPECIFICATION NUMBER BUS-12-090.

SHEET INDEX		ISSUE	-	-											CUSTOMER COPY	DuPont Electronics 	
		SH NO	1	-											CODE IDENT 22526		
MODELS		DO NOT SCALE DRAWING			TOLERANCE UNLESS OTHERWISE NOTED		INCH/MM		MATL		DR		DATE		TITLE 4 ROW VERTICAL HEADERS COMPLIANT PRESS FIT PINS 0 GUIDE PIN/8 RND AUX PORTS		
		THIRD ANGLE PROJECTION			LINEAR		.00±.01/.0±.3		-		D. SHEAFFER		02/15/91				
TABULATION SHEETS REQUIRED		YES			INCH		.000±.005/.00±.13		FINISH		CHK		02/15/91		SCALE		
NO		MM			ANGLES 0° ±2°		.0000±.0020/.000±.051		-		ENGR		02/15/91		SIZE		
											APPD		02/15/91		DWG NO		
													2/1		CAD		
													C		SHEET		
													50040		2		

NOTE: This print is the property of and embodies proprietary designs of THE DUPONT COMPANY. No part of the design shown on this print may be used in any way without the written consent of DUPONT ELECTRONICS, New Cumberland, PA.

FORM E-3007C REV 12/90