



# NPN High Power Silicon Transistors

## 2N6674 & 2N6675

### Features

- Available in JAN, JANTX, and JANTXV per MIL-PRF-19500/537
- TO-3 (TO-204AA) Package



### Maximum Ratings

Ratings	Symbol	2N6674	2N6675	Units
Collector - Emitter Voltage	$V_{CEO}$	300	400	Vdc
Collector - Base Voltage	$V_{CBO}$	450	650	Vdc
Collector - Base Voltage	$V_{CBX}$	450	650	Vdc
Emitter - Base Voltage	$V_{EBO}$	7.0		Vdc
Base Current	$I_B$	5.0		Adc
Collector Current	$I_C$	15		Adc
Total Power Dissipation @ $T_A = +25^\circ\text{C}$ (1) @ $T_A = +25^\circ\text{C}$	$P_T$	6.0(2) 175	3.0(3) 175	W W
Operating & Storage Temperature Range	$T_{op}, T_{stg}$	-65 to +200		$^\circ\text{C}$

### Thermal Characteristics

Characteristics	Symbol	Maximum	Units
Thermal Resistance, Junction-to-Case	$R_{\theta JC}$	1.0	$^\circ\text{C}/\text{W}$

1) Derate linearly @ 1.0 mW/ $^\circ\text{C}$  for  $T_A > +25^\circ\text{C}$

2) Derate linearly @ 34.2 mW/ $^\circ\text{C}$  for  $T_A > +25^\circ\text{C}$

3) Derate linearly @ 17.1 mW/ $^\circ\text{C}$  for  $T_A > +25^\circ\text{C}$

### Electrical Characteristics

OFF Characteristics	Symbol	Minimum	Maximum	Units
Collector - Emitter Breakdown Voltage $I_C = 200 \text{ mAdc}$	$V_{(BR)CEO}$	2N6674 300	---	Vdc
2N6675 400				
Collector - Emitter Cutoff Current $V_{CE} = 450 \text{ Vdc}, V_{BE} = -1.5 \text{ Vdc}$ $V_{CE} = 650 \text{ Vdc}, V_{BE} = -1.5 \text{ Vdc}$	$I_{CEX}$	2N6674 ---	0.1 0.1	Adc
2N6675				
Emitter - Base Cutoff Current $V_{EB} = 7.0 \text{ Vdc}$	$I_{EBO}$	---	2.0	mAdc
Collector - Base Cutoff Current $V_{CB} = 450 \text{ Vdc}$	$I_{CBO}$	---	1.0	mAdc

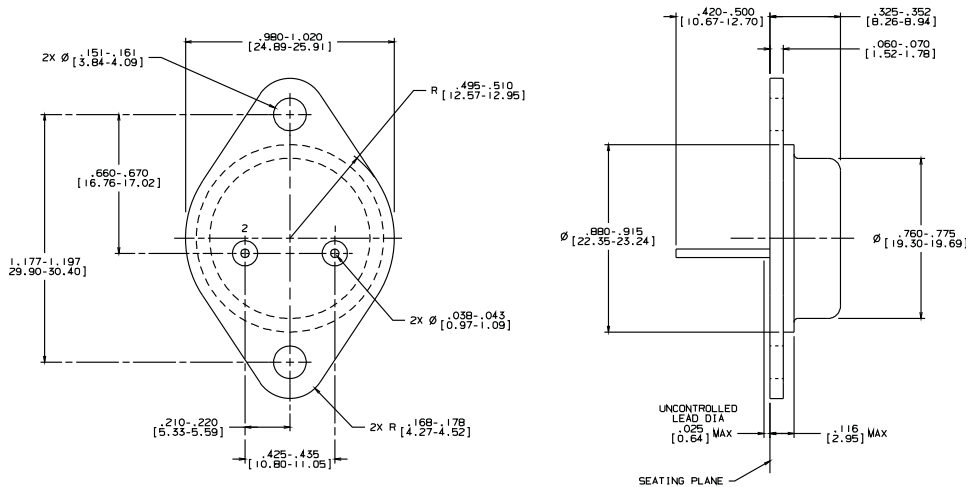


Electrical Characteristics -con't

<b>ON Characteristics (2)</b>				
	Symbol	Minimum	Maximum	Unit
Forward Current Transfer Ratio $I_C = 1.0 \text{ Adc}, V_{CE} = 3.0 \text{ Vdc}$ $I_C = 10.0 \text{ Adc}, V_{CE} = 2.0 \text{ Vdc}$	$H_{FE}$	15 8	40 20	
Collector - Emitter Saturation Voltage $I_C = 10.0 \text{ Adc}, I_B = 2.0 \text{ Adc}$ $I_C = 15.0 \text{ Adc}, I_B = 5.0 \text{ Adc}$	$V_{CE(sat)}$	- - - - - -	1.0 5.0	Vdc
Base - Emitter Saturation Voltage $I_C = 1.0 \text{ Adc}, I_B = 2.0 \text{ Vdc}$	$V_{BE(sat)}$	- - -	1.5	Vdc
<b>DYNAMIC Characteristic</b>				
Small-Signal Short-Circuit Forward Current Transfer Ratio $I_C = 0.5 \text{ Adc}, V_{CE} = 10 \text{ Vdc}, f = 1.0 \text{ kHz}$	$ h_{fe} $	3.0	10	
Output Capacitance $V_{CB} = 10 \text{ Vdc}, I_E = 0, 100 \text{ kHz} \leq f \leq 1.0 \text{ MHz}$	$C_{obo}$	150	500	pF
<b>Switching Characteristic</b>				
Delay Time	$t_d$		0.1	$\mu\text{s}$
Rise Time	$t_r$		0.6	$\mu\text{s}$
Storage Time See Figure 3 of MIL-PRF-19500/537	$t_s$		2.5	$\mu\text{s}$
Fall Time	$t_f$		0.5	$\mu\text{s}$
Cross-Over Time	$t_c$		0.5	$\mu\text{s}$
<b>SAFE OPERATING AREA</b>				
<b>DC Tests:</b>	$T_C = +25 \text{ }^\circ\text{C}, 1 \text{ Cycle}, t = 1.0 \text{ s}$ (See Figure 4 of MIL-PRF-19500/537)			
<b>Test 1:</b>	$V_{CE} = 11.7 \text{ Vdc}, I_C = 15 \text{ Adc}$			
<b>Test 2:</b>	$V_{CE} = 30 \text{ Vdc}, I_C = 5.9 \text{ Adc}$			
<b>TEST 3:</b>	$V_{CE} = 100 \text{ Vdc}, I_C = 0.25 \text{ Adc}$			
<b>TEST 4:</b>	$V_{CE} = 25 \text{ Vdc}, I_C = 7.0 \text{ Adc}$			
<b>TEST 5:</b>	$V_{CE} = 300 \text{ Vdc}, I_C = 20 \text{ mAdc}$	2N6674		
	$V_{CE} = 400 \text{ Vdc}, I_C = 10 \text{ mAdc}$	2N6675		
<b>Clamped Switching</b>	$T_A = 25 \text{ }^\circ\text{C}, V_{CC} = 15 \text{ Vdc}, \text{ Load condition B}, R_{BB1} = 5 \text{ } \Omega, R_{BB2} = 1.5 \text{ } \Omega,$ $V_{BB2} = 5 \text{ Vdc}, L = 50 \text{ } \mu\text{H}, R \text{ of inductor} = 0.05 \text{ } \Omega, R_L = R \text{ of inductor.}$ (See Figure 6 of MIL-PRF-19500/537)			
Clamp Voltage = 350, $I_C = 10 \text{ Adc}$	2N6674			
Clamp Voltage = 450, $I_C = 10 \text{ Adc}$	2N6675			

(2) Pulse Test: Pulse Width = 300  $\mu\text{s}$ , Duty Cycle  $\leq 2.0\%$ .

Outline Drawing



- NOTES:  
 1. STANDARD HEADER TYPE SOLID BASE.  
 2. STANDARD LEAD FINISH PER MIL-M-58510 TYPE X OR EQUIVALENT.  
 3. LEAD NOT BENT GREATER THAN 15°.  
 4. DIMENSIONS BASED ON JEDEC STANDARD TO-3 PUBLICATION 95, PA

**Aeroflex / Metelics, Inc.**

975 Stewart Drive,  
 Sunnyvale, CA 94085  
 Tel: (408) 737-8181  
 Fax: (408) 733-7645

Sales: 888-641-SEMI (7364)

**Hi-Rel Components**

9 Hampshire Street,  
 Lawrence, MA 01840  
 Tel: (603) 641-3800  
 Fax: (978) 683-3264

[www.aeroflex.com/metelics-hirelcomponents](http://www.aeroflex.com/metelics-hirelcomponents)

[www.aeroflex.com/metelics](http://www.aeroflex.com/metelics)      [metelics-sales@aeroflex.com](mailto:metelics-sales@aeroflex.com)

Aeroflex / Metelics, Inc. reserves the right to make changes to any products and services herein at any time without notice. Consult Aeroflex or an authorized sales representative to verify that the information in this data sheet is current before using this product. Aeroflex does not assume any responsibility or liability arising out of the application or use of any product or service described herein, except as expressly agreed to in writing by Aeroflex; nor does the purchase, lease, or use of a product or service from Aeroflex convey a license under any patent rights, copyrights, trademark rights, or any other of the intellectual rights of Aeroflex or of third parties.

Copyright 2011 Aeroflex / Metelics. All rights reserved.

**ISO 9001: 2008 certified companies**



Our passion for performance is defined by three attributes represented by these three icons: solution-minded, performance-driven and customer-focused.