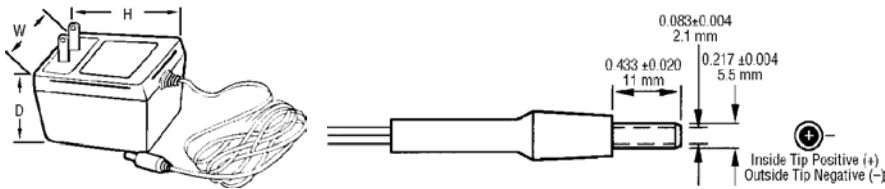


Visit MagneTek.com website at www.magnetek.com

Wall Plug-Ins, AC/DC Unregulated



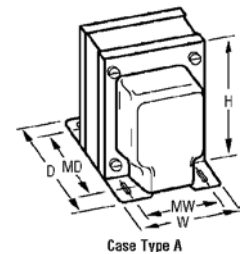
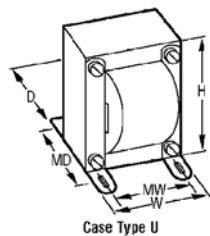
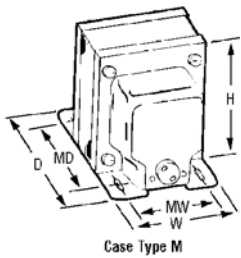
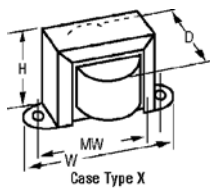
MagneTek's prepackaged wall plug-in power supplies decrease product design time. These plug-in power sources eliminate the need for internal power supply cooling devices, thereby reducing the noise level, size and weight of the end product. In addition, these compact power sources keep heat away from sensitive circuits, and supply a safer lower power output to the end product. Wall plug-in power sources are completely enclosed to prevent tampering. And since they carry

many required agency listings, their use aids in gaining agency approvals. Offered in a wide range of popular voltages, the plug-in power sources are available in AC-DC unregulated models with generous foot cord lengths. These mate with Switchcraft 722A Style power jacks. UL/CSA, Class 2.

Stock No.	Mfr.'s Type	Input		Output		Case Dimensions			EACH	
		VAC	Watts	VDC	IDC	H	W	D	1-9	10-24
967-8080	WDU6-100	117/120	6.0	6.0	0.10	2 3/16	1 11/16	1 7/16	5.38	5.01
967-8081	WDU6-300	117/120	6.0	6.0	0.30	2 3/16	1 11/16	1 7/16	5.38	5.01
967-8082	WDU6-600	117/120	10.0	6.0	0.60	2 3/16	2	1 5/8	6.86	6.40
967-8083	WDU6-800	117/120	12.0	6.0	0.80	2 3/16	2	1 5/8	6.86	6.40
967-8084	WDU6-1000	117/120	13.0	6.0	1.00	2 3/16	2 1/8	1 7/8	9.01	8.40
967-8085	WDU6-1200	117/120	14.0	6.0	1.20	2 3/16	2 1/8	1 7/8	9.01	8.40
967-8086	WDU7-100	117/120	6.0	7.5	0.10	2 3/16	1 11/16	1 7/16	6.25	5.83
967-8087	WDU7-300	117/120	6.0	7.5	0.30	2 3/16	1 11/16	1 7/16	6.25	5.83
967-8088	WDU7-5-1000	117/120	15.0	7.5	1.00	2 3/16	2 1/8	1 7/8	9.01	8.40
967-8089	WDU9-100	117/120	6.0	9.0	0.10	2 3/16	1 11/16	1 7/16	5.38	5.01
967-8090	WDU9-300	117/120	6.0	9.0	0.30	2 3/16	1 11/16	1 7/16	5.38	5.01
967-8091	WDU9-500	117/120	12.0	9.0	0.50	2 3/16	2	1 5/8	6.86	6.40
967-8092	WDU9-1000	117/120	15.0	9.0	1.00	2 3/16	2 1/8	1 7/8	9.01	8.40

Stock No.	Mfr.'s Type	Input		Output		Case Dimensions			EACH	
		VAC	Watts	VDC	IDC	H	W	D	1-9	10-24
967-8093	WDU9-1200	117/120	20.0	9.0	1.20	3 1/16	2 3/16	2 3/16	9.01	8.40
967-8094	WDU12-100	117/120	6.0	12.0	0.10	2 3/16	1 11/16	1 7/16	5.38	5.01
967-8095	WDU12-300	117/120	10.0	12.0	0.30	2 3/16	2	1 5/8	7.88	7.35
967-8096	WDU12-600	117/120	14.0	12.0	0.60	2 3/16	2 1/8	1 7/8	9.01	8.40
967-8097	WDU12-1200	117/120	24.0	12.0	1.20	3 1/16	2 3/16	2 3/16	9.25	8.63
967-8098	WDU15-200	117/120	10.0	15.0	0.20	2 1/2	2	1 5/8	6.86	6.40
967-8099	WDU15-600	117/120	15.0	15.0	0.60	2 3/16	2 3/16	1 7/8	9.25	8.63
967-8100	WDU15-1000	117/120	24.0	15.0	1.00	3 1/16	2 3/16	2 3/16	9.88	9.21
967-8101	WDU18-100	117/120	6.0	18.0	0.10	2 3/16	1 11/16	1 7/16	5.38	5.01
967-8102	WDU18-250	117/120	12.0	18.0	0.25	2 1/2	2	1 5/8	6.86	6.40
967-8103	WDU18-600	117/120	18.0	18.0	0.60	3 1/16	2 3/16	2 3/16	9.01	8.40
967-8104	WDU18-1000	117/120	30.0	18.0	1.00	3 1/16	2 3/16	2 3/16	9.88	9.21

Note: AC/DC, AC/AC available, minimums apply



Step-Down Autotransformers and Isolation Transformers

Step-Down Autotransformers

TRIAD autotransformers are single winding transformers in which the primary coil is a fraction of the entire winding for voltage step-up or the secondary coil is a fraction of the entire winding for voltage step-down. In ordinary double wound power transformers, the primary and secondary are isolated and all the power is transferred by induction. In autotransformers, part of the power is transferred conductively through the windings. TRIAD autotransformers come in a variety of configurations, case types and output watts (VA) ratings in excess of 2000 watts.

Stock No.	Mfr.'s Type	Output Watts (VA)	Primary Voltage	Secondary		Case Type*	Connections	Lead Holes Used	Case Dimensions			Mounting Dim.		Wt. (Lbs.)	EACH
				Volts ±5%	RMS Amps				H	W	D	MW	MD		
967-9508	N-1X	50	230	115	0.435	X (1)	Leads	—	2 3/16	3 1/16	2	3 1/8	—	1.50	9.18
967-9512	N-2X	100	230	115	0.870	X (1)	Leads	—	2 3/16	4	2 1/8	3 5/8	—	2.10	13.50
967-4521	N-4M	150	230	115	1.300	M (3)	6' Cord, Plug and Socket	—	3 19/32	2 3/32	3 3/8	2 1/4	2 3/8	4.70	33.68
967-9994	N-4MG†	150	230	115	1.300	M (3)	6' Cord, Plug and Socket	—	3 19/32	2 3/32	4 1/8	2 1/4	2 7/8	4.70	45.88
967-9514	N-6U	200	230	115	1.700	U (2)	Leads	—	3 3/8	2 13/16	2 13/16	2 1/4	2 1/4	3.60	26.17
967-9516	N-5M	250	230	115	2.170	M (3)	6' Cord, Plug and Socket	—	3 7/8	3 3/32	4 1/4	2 1/2	3	7.00	39.43
967-2302	N-250MG†	250	115	230	1.100	M (3)	6' Cord, Plug and Socket**	—	3 7/8	3 1/4	3 11/16	2 1/2	2 7/8	6.60	56.42
967-2352	N-5MG†	250	230	115	2.170	M (3)	6' Cord, Plug and Socket**	—	3 7/8	3 3/32	4 13/16	2 1/2	3 1/2	7.00	56.42
967-2309	N-500MG†	500	115	230	2.200	M (3)	6' Cord, Plug and Socket**	—	4 5/8	3 7/8	4 1/4	3	3 3/8	11.20	63.44
967-9518	N-7M	600	230	115	5.220	M (3)	6' Cord, Plug and Socket	—	4 5/8	3 13/16	5	3	3 7/8	12.00	46.77
967-9522	N-7MG†	600	230	115	5.220	M (3)	6' Cord, Plug and Socket	—	4 5/8	3 13/16	5	3	3 7/8	12.00	63.44
967-9725	N-1000MG†	1000	115	230	4.350	M (4)	6' Cord, Plug and Socket**	—	5 3/8	4 1/2	5 1/2	3 1/2	4 1/8	17.39	105.12
967-2358	N-9MG†	1250	230	115	10.850	M (4)	6' Cord, Plug and Socket	—	5 3/8	4 1/2	6	3 1/2	4 1/2	21.00	125.42
967-2173	N-11MG†	2000	230	115	17.400	M (4)	6' Cord, Plug and Socket	—	5 3/8	4 1/2	8 1/4	3 1/2	6 7/8	33.25	177.26

Isolation Transformers

Isolation transformers are power transformers for isolating equipment from direct connection to the power line. They are offered in a variety of voltage and case types. TRIAD isolation transformers are also offered in a hospital type (designated with an MD suffix) which are designed and constructed to meet the low leakage current requirements for today's medical equipment. The transformers are constructed with nonconcentrically precision-wound coils. The primary and secondary are precision wound on separate arbors, then assembled on a laminate core side by side separated by insulation. This prevents electrical connection, under normal or overload conditions, between the primary and secondary windings. These hospital type units are offered with a resettable circuit breaker, providing protection from overload and short circuit conditions. G suffix denotes ground.

Standard Applications

967-2354	N-48X	15	115	115	0.130	X (1)	Leads	—	1 15/16	3 5/16	2	2 13/16	—	1.35	12.09
967-9500	N-51X	35	115	115	0.300	X (1)	Leads	—	2 3/32	3 11/16	2 1/8	3 1/8	—	1.70	12.50
967-9502	N-68X	50	115/230†	115	0.435	X (1)	Leads	—	2 3/32	3 11/16	2 1/8	3 1/8	—	1.70	16.19
967-9730	N-53MG	85	115	115	0.740	M (3)	6' Cord, Plug and Socket	—	3 19/32	2 3/32	4 1/8	2 1/4	2 7/8	4.70	49.44
967-2343	N-77U††	100	115/230	115	0.860	U (2)	Leads	—	3 7/8	2 3/32	4 1/8	2 1/4	2 1/2	4.00	25.61
967-5861	N-54MG	150	115	115	1.300	M (3)	6' Cord, Plug and Socket	—	3 7/8	3 3/32	5 13/16	2 1/2	3 1/2	7.00	53.19
967-9504	N-67A	150	115/230†	115	1.300	A (3)	Leads	2	3 7/8	3 3/32	3 7/8	2 1/2	3	7.00	35.25
967-2073	N-73A	150	115	115/230†	0.650	A (3)	Leads	1	3 7/8	3 3/32	3 7/8	2 1/2	2 3/4	7.00	33.47
967-9735	N-55MG	250	115	115	2.170	M (3)	6' Cord, Plug and Socket	—	4 5/8	3 13/16	5	3	3 13/16	11.00	62.96
967-9506	N-66A	250	115/230†	115	2.170	A (3)	Leads	2	4 5/8	3 13/16	4 1/8	3	3 5/8	11.00	51.87
967-2303	N-255MG	250	230	115	2.170	M (3)	6' Cord, Plug and Socket	—	4 5/8	3 13/16	5	3	3 13/16	11.00	62.96
967-2361	N-57MG	500	115	115	4.350	M (5)	6' Cord, Plug and Socket	—	5 3/8	4 1/2	6 1/4	3 1/2	5 1/8	23.75	95.45
967-2304	N-257MG	500	230	115	4.350	M (5)	6' Cord, Plug and Socket	—	5 3/8	4 1/2	6 1/4	3 1/2	5 1/8	23.75	95.45
967-2342	N-59MG	1000	115	115	8.700	M (5)	6' Cord, Plug and Socket	—	5 3/8	4 1/2	7 1/8	3 1/2	6	31.00	182.04
967-2308	N-259MG	1000	230	115	8.700	M (5)	6' Cord, Plug and Socket	—	5 3/8	4 1/2	7 1/8	3 1/2	6	31.00	182.04

Medical/Dental Applications

UL 544 File E102910.

967-2344	N-90MD	250	115	115	2.170	M (3)	6' Cord, Plug and Socket*	—	4 5/8	3 7/8	6 1/8	3	4 15/16	11.90	133.27
967-2345	N-92MD	500	115	115	4.350	M (4)	6' Cord, Plug and Socket*	—	5 13/32	4 1/2	7	3 1/2	5 3/8	17.60	167.52

*Mounting Hole Sizes: (1) = 3/16"; (2) = 13/64" x 3/16"; (3) = 3/8 x 3/16"; (4) = 21/32" x 3/16"; (5) = 1/2" x 1/4". †Has 3-wire plug, cord and socket. ‡Split winding. *Circuit Breaker. **3 wire cord. ††Unit does not include static shield.

Technical Notes: (A) Line cord, plug and receptacle are U.L. listed and verified to meet federal specifications. (B) Connections are by leads, plugs and sockets. (C) Hi-pot tested at 1500 VRMS.

17

For Fast, Dependable Service, Make Just One Call — 1-800-433-5700

ALLIED ▶ 1045

Datasheet.Live