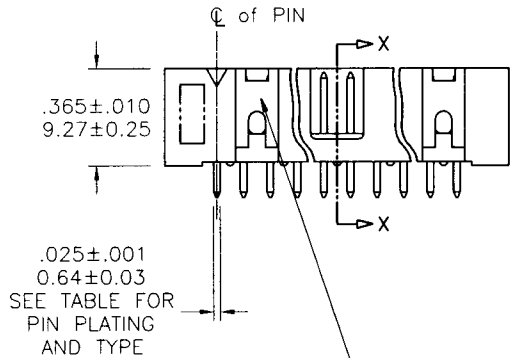
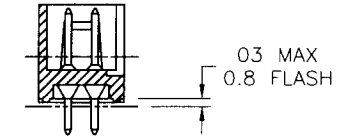
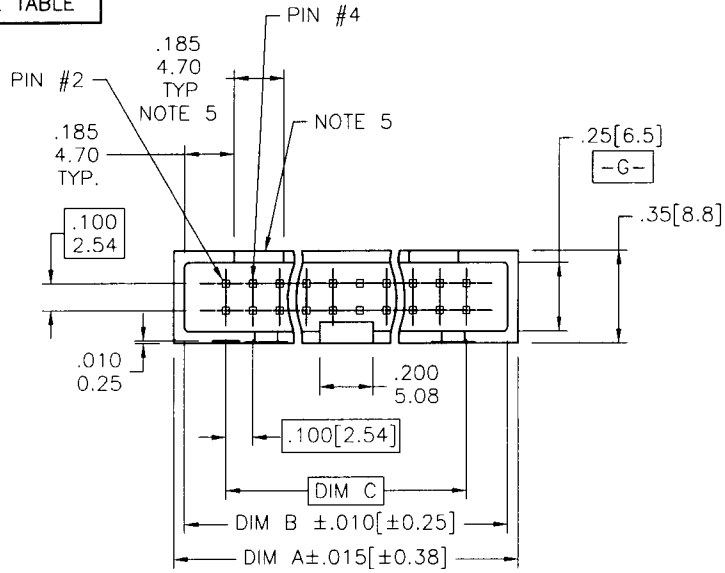
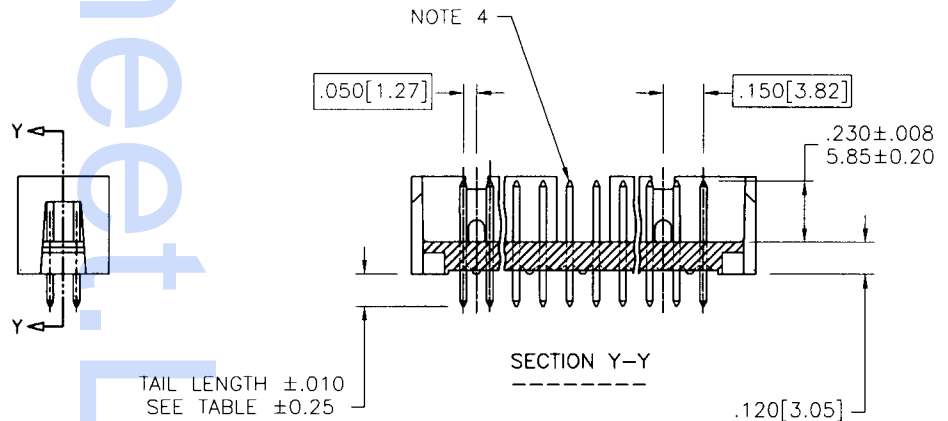


PRODUCT NO.  
SEE TABLE



SEE SH. 2 AND TABLE FOR  
POLARIZATION FEATURE  
ARRANGEMENT AND STYLE

.025 ±.001  
0.64 ±0.03  
SEE TABLE FOR  
PIN PLATING  
AND TYPE

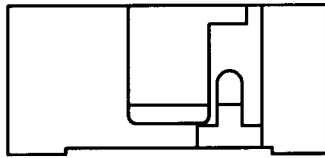


mat'l. code				tolerances unless otherwise specified		CUSTOMER COPY	BERG ELECTRONICS	
NOTE 1 & 2							title	
ltr	ecn no	dr	date			projection	HEADER, SLIMLINE, VERTICAL ASS'Y, 4-WALL	
A	V61357	MDF	9/19/96	linear	.XX±.01/.X±.3		INCH/MM	product family
B	V61670	MDF	11/4/96		.XXX±.005/.XX±.13	size		dwg no
C	V70137	SAR	5/16/97	angles	.XXX±.0020/.XXX±.051	scale	A 72250	
D	V70888	SAR	6/6/97	dr	0' ±2'		1.5:1	sheet 1 of 3
E	V71117	EPK	9/24/97	enr	M. FETROW 9/19/96			
F	V71292		9/26/97	chr	L. FYE 9/19/96			
F	V80075	SAR	1/19/98	appd	L. FYE 9/19/96			
sheet index	revision sheet	F	E	E				
		1	2	3				

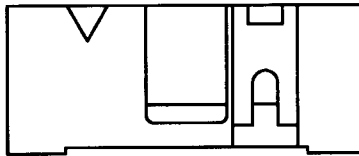


PRODUCT NUMBER

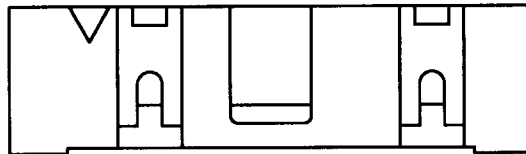
SEE TABLE



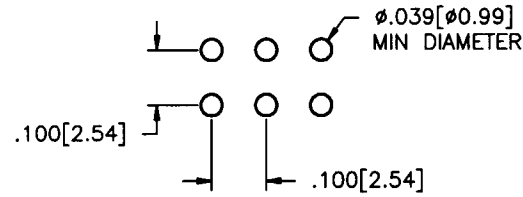
2 X 5  
 STYLE B -- NO TRIANGLE  
 FOR POSITION #1



2 X 7  
 STYLE C



2 X 8 & LARGER  
 STYLE D



RECOMMENDED HOLE PATTERN

NOTES:

- ① PLASTIC MATERIAL: (SEE TABLES)  
 30% GLASS FILLED,  
 FLAME RETARDANT PER UL-94-V0
2. PIN MATERIAL: PHOS BRONZE.
- ③ 4 LBS/1.8 KG MIN PIN RETENTION.
- ④ PIN CONTACT SURFACE IS TO BE FREE OF BURRS,  
 SCRATCHES AND PLASTIC DEBRIS.
- ⑤ FOR SIZES 2 X 5 & 2 X 7, ONLY ONE POLARIZATION SLOT  
 ON THE SAME END AS POSITION #1.
- ⑥ PACKAGING: (SEE TABLES)  
 "O" = TRAY PACKAGE. (THE STANDARD METHOD OF PACKAGING)  
 "G" = GPAX TAPE AND REEL  
 "T" = TUBE PACKAGING
- ⑦ PART NUMBERS WITH "R" FOLLOWING THE PART NUMBER  
 WILL HAVE RETENTIVE TAILS. (ONLY PARTS WITH TAIL  
 LENGTHS OF .120 AND .150)  
 TWO PAIR OF PINS LOCATED APPROXIMATELY IN THE CENTER  
 OF 2X14 AND SMALLER SIZE ARE TO BE KINKED.  
 TWO PAIR OF PINS LOCATED ON EACH END OF 2X15 AND LARGER  
 ARE TO HAVE 2 PAIR OF PINS KINKED ON EACH END.
- ⑧ ADD AN "A" ON THE END OF THE PART NUMBER FOR  
 SPECIAL PRINTING (DATE CODE WEEK/YR)

mat'l. code				tolerances unless otherwise specified			CUSTOMER COPY		<b>BERG ELECTRONICS</b>		
ltr	ecn no	dr	date	linear	.XX ±.01/.3		projection	title			
E					.XXX ±.005/.13				HEADER, SLIMLINE, VERTICAL ASS'Y, 4-WALL		
					.XXXX ±.0020/.051				product family HEADER		
				angles	0° ±2°		INCH/MM	size		code	
				dr	M. FETROW	9/19/96	scale	A		sheet	
				enr	L. FYE	9/19/96		72250		2 of	
				chr	L. FYE	9/19/96					
				appd	L. FYE	9/19/96					
sheet index	revision sheet										

