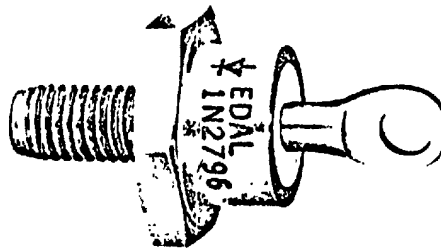
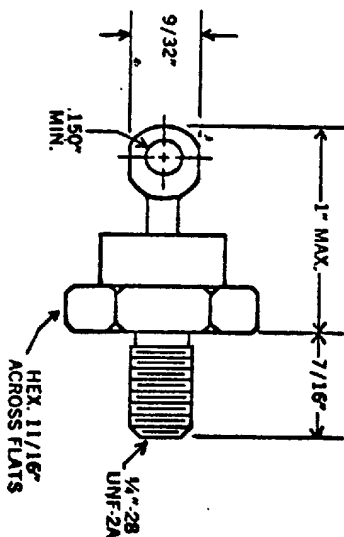


T-01-19 -



**B<sub>v</sub>** \_\_\_\_\_  
**PIV** See Table  
**I<sub>o</sub>** 10 A @ 110 °C Case  
**I<sub>s</sub>** 200 AMPS  
**V<sub>f</sub>** 1.1 v @ 100 A @ 25 °C  
**I<sub>r</sub>** I<sub>r</sub> @ PIV @ 175 °C

Datasheet Live

**STYLE** DO-5

**STAMP** Edal. P/N

**EQUIV. TO** F5 **EXCEPT** \_\_\_\_\_

P/N	PIV (VOLTS)	I <sub>r</sub> (mA)
1N1183A	50	5
1N1184A	100	5
1N1185A	150	5
1N1186A	200	5
1N1187A	300	2.5
1N1188A	400	2.2
1N1189A	500	2.0
1N1190A	600	1.8

Note: Add R after P/N to denote reverse polarity

REV.	DESCRIPTION	BY	DATE

<b>EDAL INDUSTRIES INC.</b>		<b>DRAWN</b>	<b>APP</b>	<b>DATE</b>
EAST HAVEN, CONN. 06512		DV		6/2/72
TOLERANCES UNLESS OTHERWISE NOTED				
		FRACTIONS ±		DECIMALS ±
<b>TITLE</b>		<b>DWG. NO.</b>		
SILICON RECTIFIER		1N1183A - 1N1190A		

9000-4150