



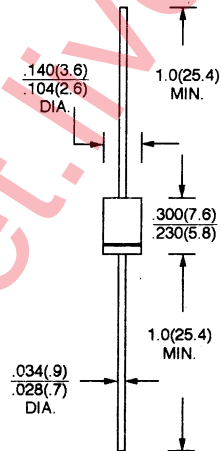
HER201G THRU HER208G

2.0 AMPS. GLASS PASSIVATED HIGH EFFICIENCY RECTIFIERS

VOLTAGE RANGE

50 to 1000 Volts
CURRENT
2.0 Amperes

DO-15



Dimensions in inches and (millimeters)

FEATURES

- * Low forward voltage drop
- * High current capability
- * High reliability
- * High surge current capability

MECHANICAL DATA

- * Case: Molded plastic
- * Epoxy: UL 94V-0 rate flame retardant
- * Lead: Axial leads, solderable per MIL-STD-202, method 208 guaranteed
- * Polarity: Color band denotes cathode end
- * Mounting Position: Any
- * Weight: 0.40 grams

MAXIMUM RATINGS AND ELECTRICAL CHARACTERISTICS

Rating at 25°C ambient temperature unless otherwise specified.
Single phase, half wave, 60 Hz, resistive or inductive load.
For capacitive load, derate current by 20%

TYPE NUMBER	SYMBOLS	HER 201G	HER 202G	HER 203G	HER 204G	HER 205G	HER 206G	HER 207G	HER 208G	UNITS	
Maximum Recurrent Peak Reverse Voltage	V_{RRM}	50	100	200	300	400	600	800	1000	V	
Maximum RMS Voltage	V_{RMS}	35	70	140	210	280	420	560	700	V	
Maximum D. C Blocking Voltage	V_{DC}	50	100	200	300	400	600	800	1000	V	
Maximum Average Forward Rectified Current. .375" (9.5mm) lead length @ $T_A = 55^\circ\text{C}$ (Note 1)	$I_{F(AV)}$	2.0								A	
Peak Forward Surge Current, 8.3 ms single half sine-wave superimposed on rated load (JEDEC method)	I_{FSM}	55								A	
Maximum Instantaneous Forward Voltage at 2.0A (Note 1)	V_F	1.0			1.3		1.7			V	
Maximum D. C Reverse Current @ $T_A = 25^\circ\text{C}$ at Rated D. C. Blocking Voltage @ $T_A = 125^\circ\text{C}$	I_R	5.0 100								μA μA	
Maximum Reverse Recovery Time (Note 2)	T_{RR}	50					75				nS
Typical Junction Capacitance (Note 3)	C_J	60					40				pF
Operating and Storage Temperature Range	T_J, T_{STG}	-65 to +150								°C	

- NOTES: 1. Mounted on P. C. B with 0.2 x 0.2" (5.0 x 5.0mm) copper pads.
2. Reverse Recovery Test Conditions: $I_F = 0.5\text{A}$, $I_R = 1.0\text{A}$, $I_{RR} = 0.25\text{A}$.
3. Measured at 1 MHz and applied reverse voltage of 4.0V D. C.

RATINGS AND CHARACTERISTIC CURVES (HER201G THRU HER208G)

FIG. 1 - TEST CIRCUIT DIAGRAM AND REVERSE RECOVERY TIME CHARACTERISTICS

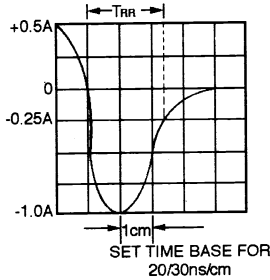
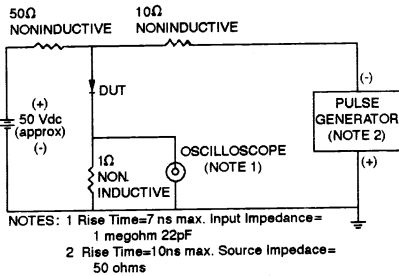


FIG. 2 - TYPICAL FORWARD CURRENT DERATING CURVE

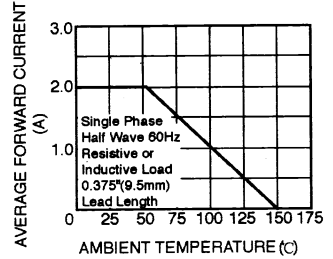


FIG. 3 - TYPICAL REVERSE CHARACTERISTICS

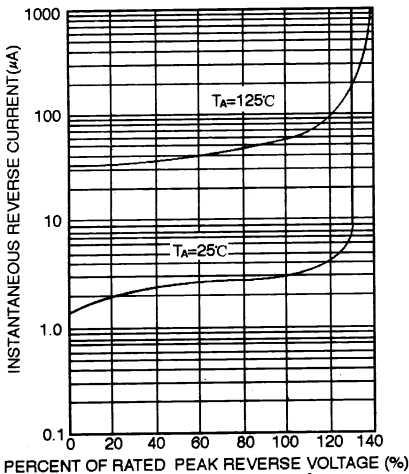


FIG. 4 - TYPICAL FORWARD CHARACTERISTICS

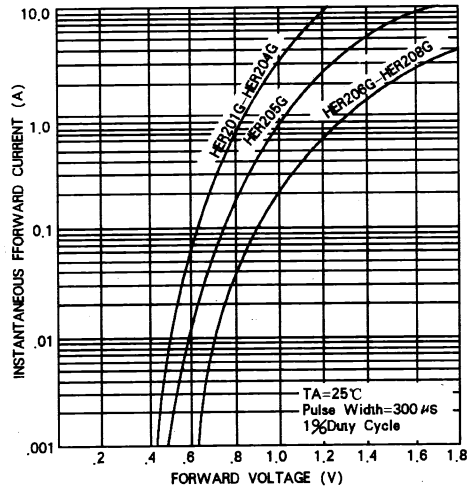


FIG. 5 - MAXIMUM NON-REPETITIVE FORWARD SURGE CURRENT

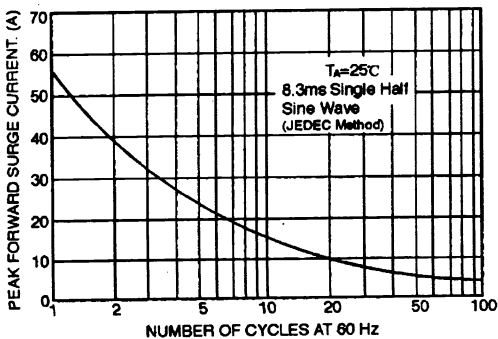


FIG. 6 - TYPICAL JUNCTION CAPACITANCE

