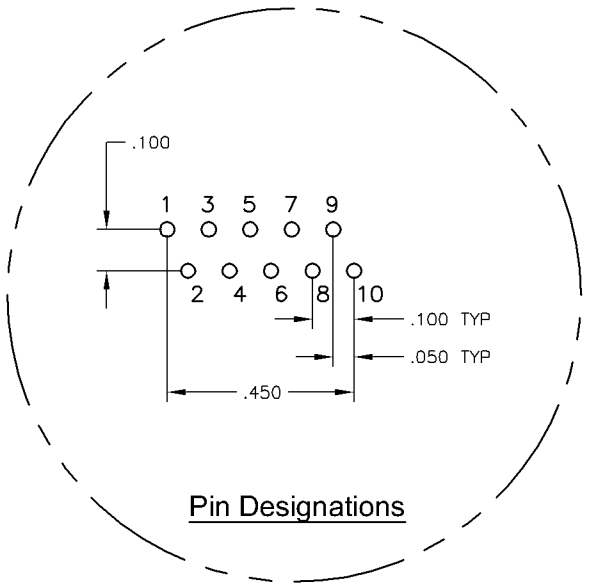
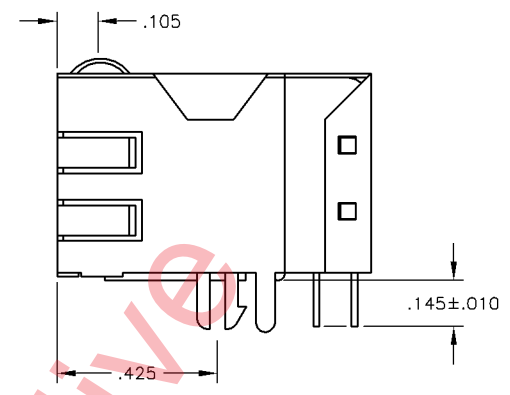
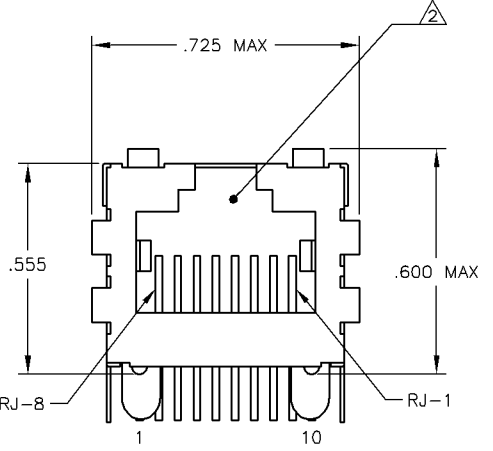
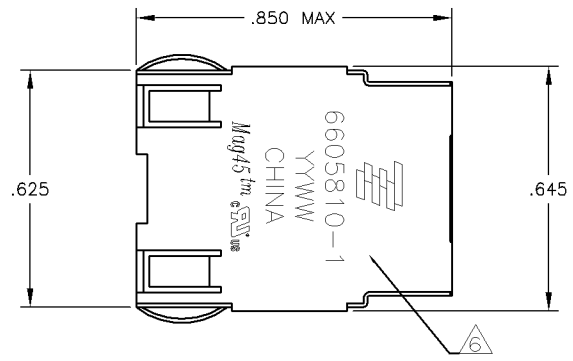


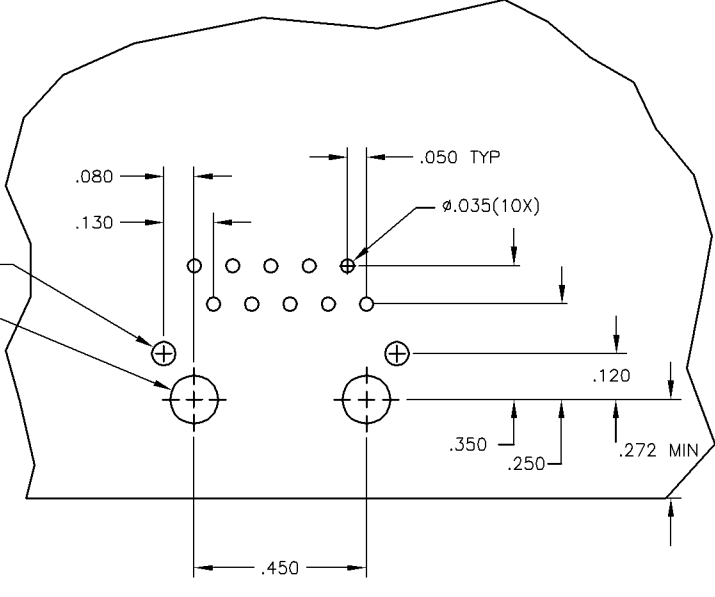
THIS DRAWING IS UNPUBLISHED. RELEASED FOR PUBLICATION.  
 COPYRIGHT © BY TYCO ELECTRONICS CORPORATION. ALL RIGHTS RESERVED.

LOC		REV		REVISIONS			
AA	22	#	LNK	DESCRIPTION	DATE	BY	APP'D
C	REV PER ECO-08-024006				09SEP2008	VL	TX

**MECHANICAL:**



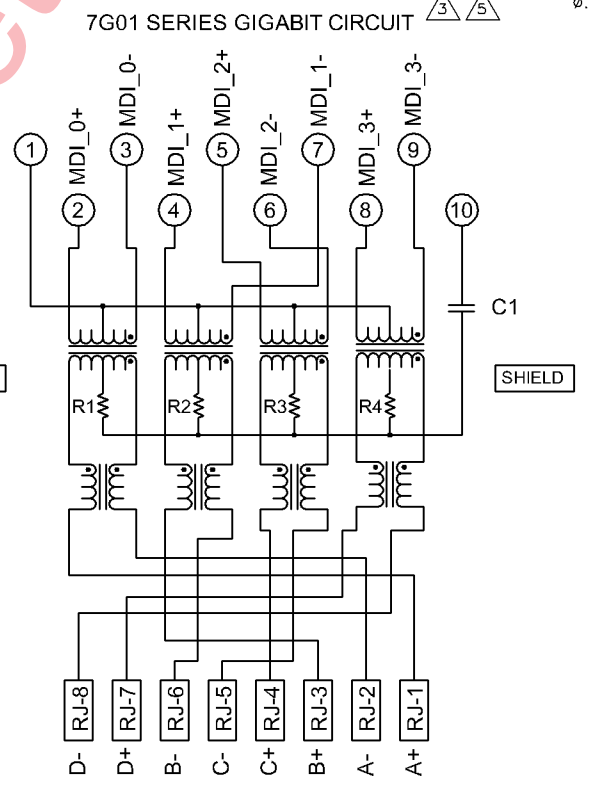
**TOP VIEW**



**Suggested PCB Layout  
(Component Side)**

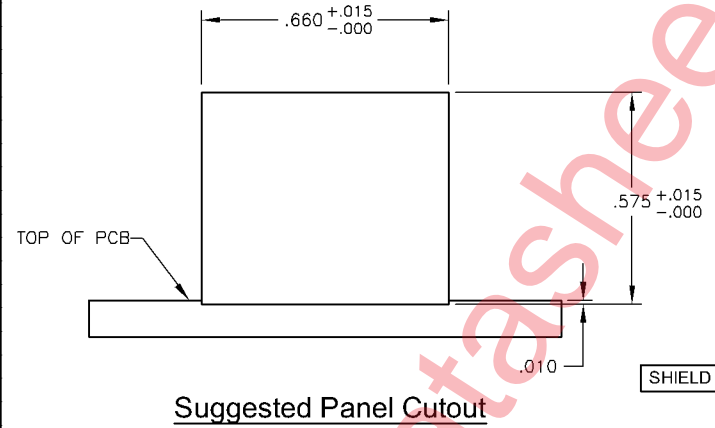
**TOP VIEW**

**ELECTRICAL:**



C1 = 1000 pF, 2kV DECOUPLING CAPACITOR  
 R1-R4 = 75 OHMS, 1/16 W 5% RESISTORS

- ⚠ MATERIALS:
  - HOUSING - THERMOPLASTIC PET POLYESTER FLAMMABILITY RATING UL 94V-0.
  - SHIELD - .010" THICK, C26800 BRASS PREPLATED WITH 30 μINCH MIN SEMI-BRIGHT NICKEL, SOLDER TABS POST DIPPED WITH 100 μINCH MIN SAC SOLDER.
  - MOD JACK CONTACTS - 0.0157" x 0.018" PHOSPHOR BRONZE, 50 μINCH MIN OVERALL NICKEL UNDERPLATE, WITH SELECT 50 μINCH MIN HARD GOLD FINISH PLATE. SOLDER TAILS WITH 100 μINCH MIN MATTE TIN AND/OR SAC SOLDER DIP.
- ⚠ RJ45 JACK CAVITY CONFORMS TO FCC RULES AND REGULATIONS PART 68, SUB PART F.
- ⚠ MAGNETICS
  - IMPEDANCE: 100 OHMS
  - TURNS RATIO (CHIP: CABLE): 1:1 ALL FOUR PAIRS
  - OPEN CIRCUIT INDUCTANCE (OCL): 350 μH MIN @100kHz, 0.1VRMS, 8mADC BIAS FROM 0°C TO 70°C, ALL FOUR PAIRS
  - ALL FOUR PAIRS BI-DIRECTIONAL
  - PERFORMANCE @ 25°C:
    - INSERTION LOSS (IL): 1.1dB MAX FROM 0.5MHz TO 100MHz
    - RETURN LOSS (RL): 18dB MIN FROM 0.5MHz TO 40MHz
    - 12-20LOG(f/80)dB MIN FROM 40.1MHz TO 100MHz
    - CROSSTALK ATTENUATION: 35dB MIN FROM 0.5MHz TO 40MHz
    - 33-20 \*LOG(f/50)dB MIN FROM 40.1MHz TO 100MHz
    - COMMON MODE REJECTION RATIO (CMRR): 30dB MIN FROM 0.5MHz TO 100MHz
    - ISOLATION VOLTAGE: COMPLIES WITH IEEE802.3 2002, PARA 40.6.1.1, ITEM b.
- 4. OPERATING TEMPERATURE: FROM 0° TO +70°C.
- ⚠ THE MAGNETICS ARE SYMMETRIC TO SUPPORT AUTO-MDI/MDIX.
- ⚠ TYCO ELECTRONICS LOGO, PART NUMBER, DATE CODE, COUNTRY OF ORIGIN AND AGENCY APPROVAL MARKING IN APPROXIMATE LOCATION SHOWN.
- 7. THE PART IS RECOMMENDED FOR WAVE SOLDERING PROCESS, PREHEAT TEMPERATURE IS 120°C TO 160°C, 120 SECONDS TO 180 SECONDS, PEAK WAVE SOLDERING TEMPERATURE IS 260°C MAX, 10 SECONDS MAX.



**Suggested Panel Cutout**

THIS DRAWING IS A CONTROLLED DOCUMENT.		DRW: L VARELA - DOCK5	03MAR2005	Tyco Electronics Corporation	
DIMENSIONS: INCHES		CHK: D FAROLE	03MAR2005	Tyco Electronics Chengping, China	
TOLERANCES UNLESS OTHERWISE SPECIFIED:		APPRO: D FAROLE	03MAR2005	NAME: 1X1 MAG45(TM), MODULAR JACK, 7G01 SCHEMATIC, 7G01 SERIES GIGABIT CIRCUIT, SHIELDED, DECOUPLING CAPACITOR, NO LEDS	
0 PLC	± -	PRODUCT SPEC: 10B-2100		SIZE: A1	
1 PLC	± .010	APPLICATION SPEC:		CAGE CODE: 00779	
2 PLC	± .005	MATERIAL:		DRAWING NO: 6605810	
3 PLC	± .005	FINISH:		SCALE: NTS	
4 PLC	± -	WEIGHT:		SHEET 1 OF 1	
ANGLES:		CUSTOMER DRAWING		REV C	