



## 10/100 BASE-T SINGLE PORT THROUGH HOLE MAGNETICS

- Meets IEEE 802.3af & ANSI X 3.263
- Thru hole construction
- Many parts are PoE enabled
- Standard operating temp: 0°C to +70°C (see footnote)
- Industrial operating temp: -40°C to +85°C (see footnote)

### Electrical Specifications @25°C

Part Number	OCL(μH Min) @100KHz,0.2V With 8mA DC Bias	Turns Ratio (±3%)	Insertion Loss (dB Max)	Return Loss (dB Min)				Cross talk (dB Min)		CMRR (dB Min)	HI-POT (Vrms)
				0.5-100MHz	0.5-30MHz	30.1-60MHz	60.1-80MHz	0.5-40MHz	40.1-100MHz		
AH1601D__	350	1CT:1CT	1.1	18	18-20*log(f/30)	12	35	33-20*log(f/50)	30	1500	
AH1602D__	350	1CT:1CT	1.1	18	18-20*log(f/30)	12	35	33-20*log(f/50)	30	1500	
AH1603D__	350	1CT:1CT	1.1	18	18-20*log(f/30)	12	35	33-20*log(f/50)	30	1500	
AH1604D__	350	1CT:1CT	1.1	18	18-20*log(f/30)	12	35	33-20*log(f/50)	30	1500	
AH1605D__	350	1CT:1CT	1.1	18	18-20*log(f/30)	12	35	33-20*log(f/50)	30	1500	
AH1606D__	350	1CT:1CT	1.1	18	18-20*log(f/30)	12	35	33-20*log(f/50)	30	1500	
AH1607D__	350	1CT:1CT	1.1	18	18-20*log(f/30)	12	35	33-20*log(f/50)	30	1500	
AH1608D__	350	1CT:1CT	1.1	18	18-20*log(f/30)	12	35	33-20*log(f/50)	30	1500	
AH1609D__	350	1CT:1CT	1.1	18	18-20*log(f/30)	12	35	33-20*log(f/50)	30	1500	
AH1610D__	350	1CT:1CT	1.1	18	18-20*log(f/30)	12	35	33-20*log(f/50)	30	1500	
AH1611D__	350	1CT:1CT	1.1	18	18-20*log(f/30)	12	35	33-20*log(f/50)	30	1500	
AH1612D__	350	1CT:1CT	1.1	18	18-20*log(f/30)	12	35	33-20*log(f/50)	30	1500	
AH1613D__	350	1CT:1CT	1.1	18	18-20*log(f/30)	12	35	33-20*log(f/50)	30	1500	
AH1614D__	350	1CT:1CT	1.1	18	18-20*log(f/30)	12	35	33-20*log(f/50)	30	1500	
AH1615D__	350	1CT:1CT	1.1	18	18-20*log(f/30)	12	35	33-20*log(f/50)	30	1500	
AH1616D__	350	1CT:1CT	1.1	18	18-20*log(f/30)	12	35	33-20*log(f/50)	30	1500	
AH1618D__	350	1CT:1CT	1.1	18	18-20*log(f/30)	12	35	33-20*log(f/50)	30	1500	
AH1619D__	350	1CT:1CT	1.1	18	18-20*log(f/30)	12	35	33-20*log(f/50)	30	1500	
AH1620D__	350	1CT:1CT	1.1	18	18-20*log(f/30)	12	35	33-20*log(f/50)	30	1500	
AH1621D__	350	1CT:1CT	1.1	18	18-20*log(f/30)	12	35	33-20*log(f/50)	30	1500	
AH1622D__	350	1CT:1CT	1.1	18	18-20*log(f/30)	12	35	33-20*log(f/50)	30	1500	
AH1623D__	350	1CT:1CT	1.1	18	18-20*log(f/30)	12	35	33-20*log(f/50)	30	1500	
AH1625D__	350	1CT:1CT	1.1	18	18-20*log(f/30)	12	35	33-20*log(f/50)	30	1500	
AH1626D__	350	1CT:1CT	1.1	18	18-20*log(f/30)	12	35	33-20*log(f/50)	30	1500	
AH1628D__	350	1CT:1CT	1.1	18	18-20*log(f/30)	12	35	33-20*log(f/50)	30	1500	
AH1629D__	350	1CT:1CT	1.1	18	18-20*log(f/30)	12	35	33-20*log(f/50)	30	1500	
AH1633D__	350	1CT:1CT	1.1	18	18-20*log(f/30)	12	35	33-20*log(f/50)	30	1500	
AH1634D__	350	1CT:1CT	1.1	18	18-20*log(f/30)	12	35	33-20*log(f/50)	30	1500	
AH1635D__	350	1CT:1CT	1.1	18	18-20*log(f/30)	12	35	33-20*log(f/50)	30	1500	
AH1636D__	350	1CT:1CT	1.1	18	18-20*log(f/30)	12	35	33-20*log(f/50)	30	1500	
AH1637D__	350	1CT:1CT	1.1	18	18-20*log(f/30)	12	35	33-20*log(f/50)	30	1500	
AH1638D__	350	1CT:1CT	1.1	18	18-20*log(f/30)	12	35	33-20*log(f/50)	30	1500	
AH1639D__	350	1CT:1CT	1.1	18	18-20*log(f/30)	12	35	33-20*log(f/50)	30	1500	
AH1640D__	350	1CT:1CT	1.1	18	18-20*log(f/30)	12	35	33-20*log(f/50)	30	1500	
AH1641D__	350	1CT:1CT	1.1	18	18-20*log(f/30)	12	35	33-20*log(f/50)	30	1500	
AH1642D__	350	1CT:1CT	1.1	18	18-20*log(f/30)	12	35	33-20*log(f/50)	30	1500	
AH1644D__	350	1CT:1CT	1.1	18	18-20*log(f/30)	12	35	33-20*log(f/50)	30	1500	

\*Complete part number by inserting "S" for Standard Temp or "I" for Industrial Temp.

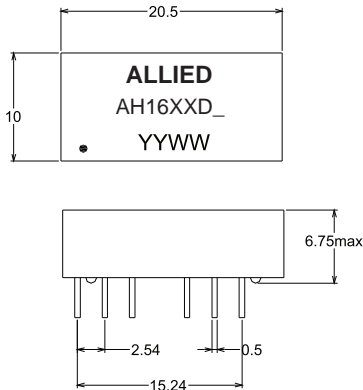
All specifications subject to change without notice.



10/100 BASE-T SINGLE PORT THROUGH HOLE MAGNETICS

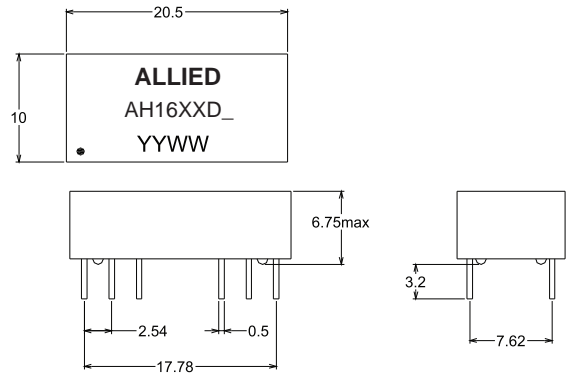
MECHANICAL

AH1601D\_, AH1602D\_, AH1607D\_, AH1608D\_,  
 AH1610D\_, AH1611D\_, AH1612D\_, AH1613D\_,  
 AH1616D\_, AH1622D\_, AH1626D\_, AH1628D\_,  
 AH1640D\_, AH1609D\_, AH1637D\_, AH1638D\_



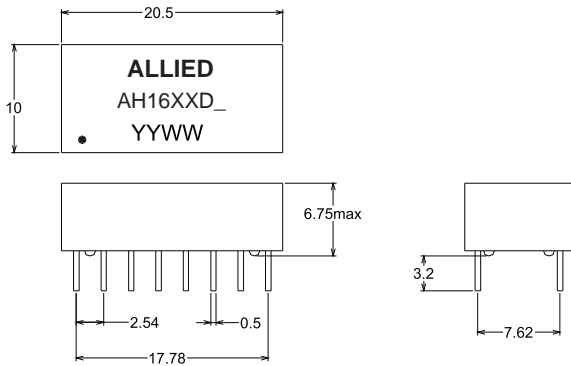
NOTE: PIN 4,8,9,13 cut off

AH1603D\_, AH1606D\_, AH1621D\_, AH1633D\_,  
 AH1641D\_, AH1642D\_, AH1644D\_

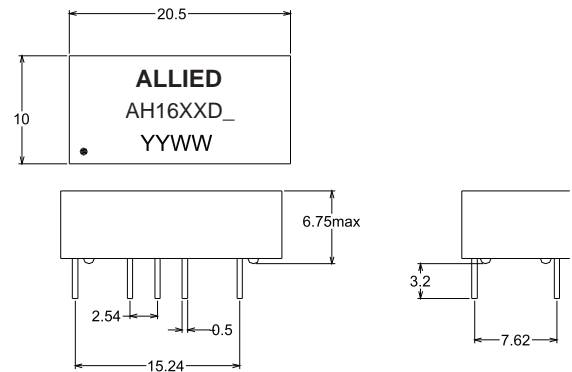


NOTE: PIN 4,5,12,13 cut off

AH1604D\_, AH1605D\_, AH1614D\_, AH1618D\_,  
 AH1619D\_, AH1623D\_, AH1634D\_, AH1635D\_,  
 AH1639D\_

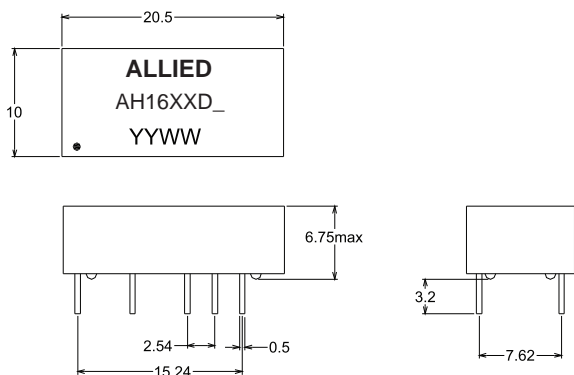


AH1615D\_, AH1625D\_



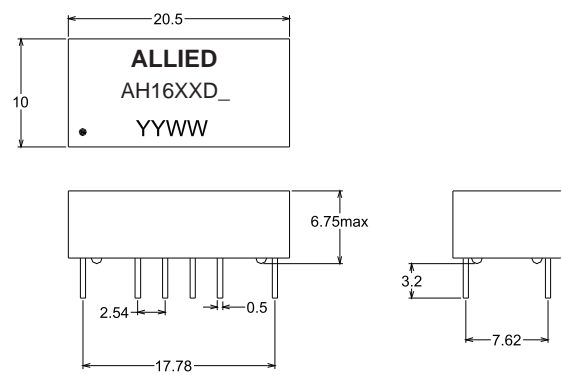
NOTE: PIN 2,6,8,9,11,15 cut off

AH1620D\_



NOTE: PIN 2,4,8,9,13,15 cut off

AH1629D\_



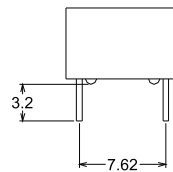
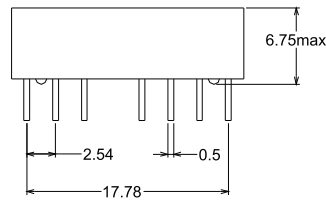
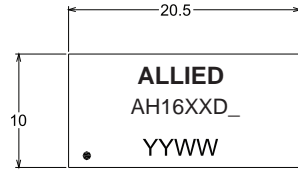
NOTE: PIN 2,7,10,15 cut off



10/100 BASE-T SINGLE PORT THROUGH HOLE MAGNETICS

MECHANICAL

AH1636D\_

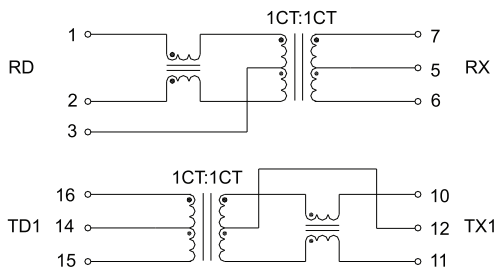


NOTE: PIN 4,13 cut off

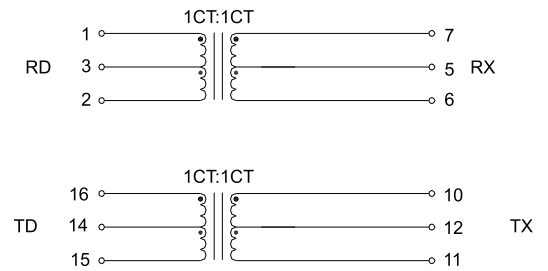
Unless otherwise specified all tolerances are:  $\pm 0.25$  in mm

SCHEMATICS

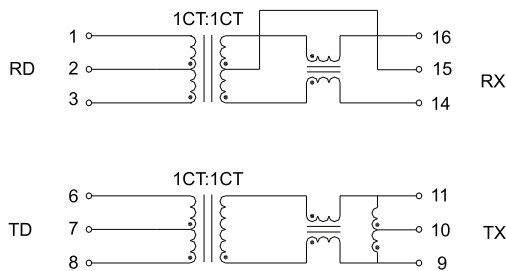
AH1601D\_



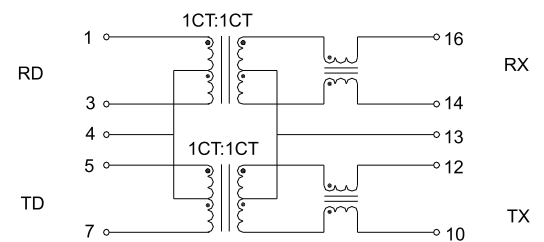
AH1602D\_



AH1603D\_



AH1605D\_, AH1614D\_, AH1625D\_

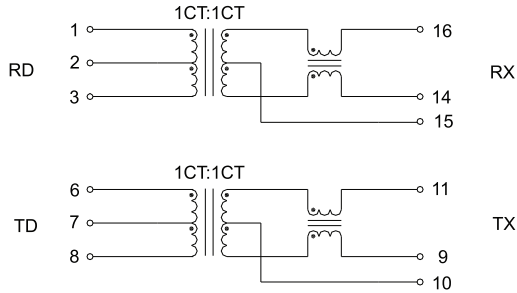




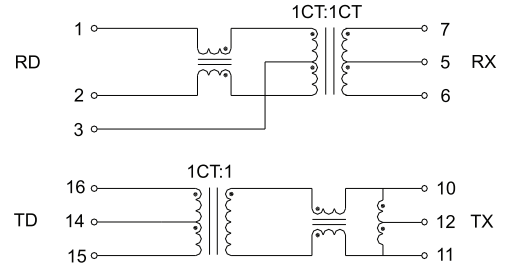
10/100 BASE-T SINGLE PORT THROUGH HOLE MAGNETICS

SCHEMATICS

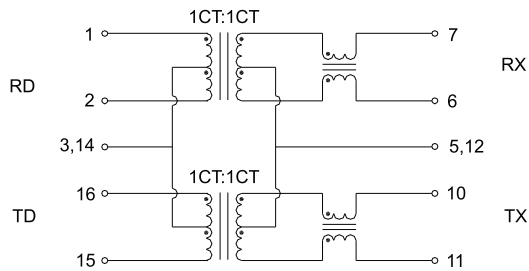
AH1606D\_, AH1633D\_, AH1641D\_



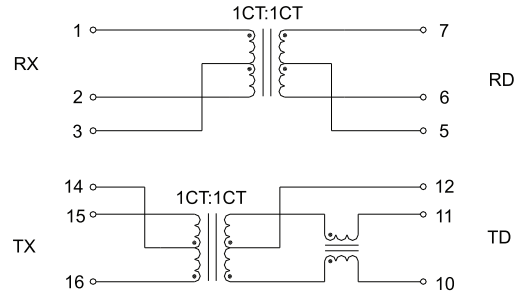
AH1607D\_



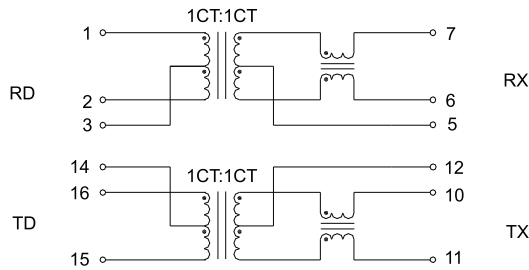
AH1608D\_



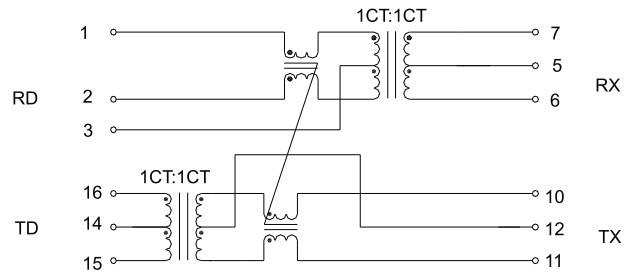
AH1604D\_, AH1609D\_



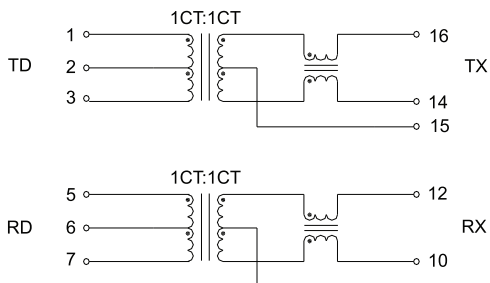
AH1610D\_, AH1621D\_, AH1622D\_, AH1638D\_



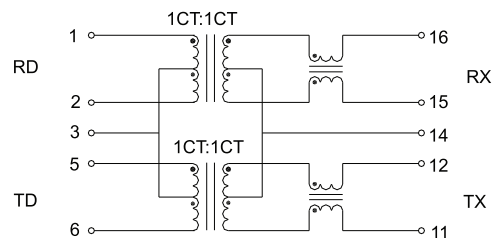
AH1611D\_, AH1628D\_



AH1612D\_



AH1613D\_

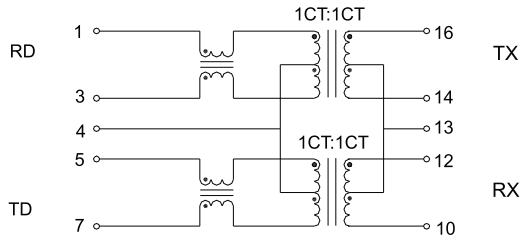




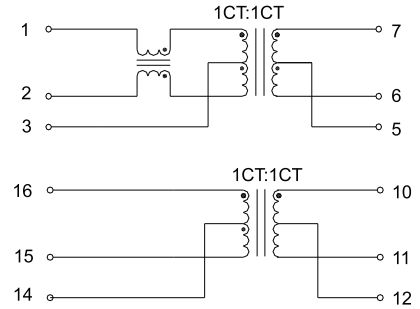
10/100 BASE-T SINGLE PORT THROUGH HOLE MAGNETICS

SCHEMATICS

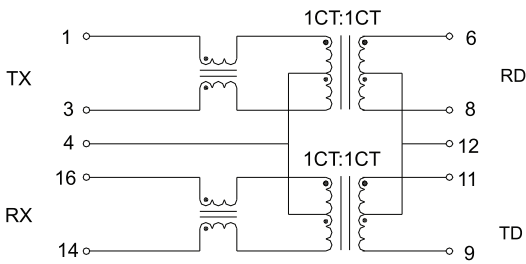
AH1615D\_



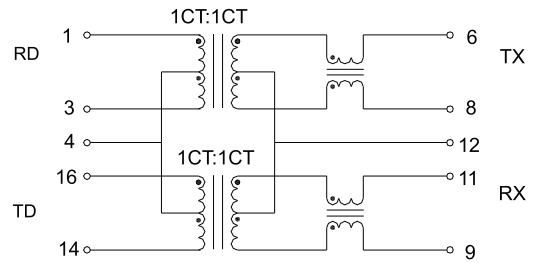
AH1616D\_, AH1637D\_



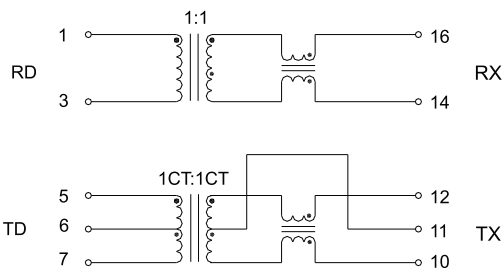
AH1619D\_



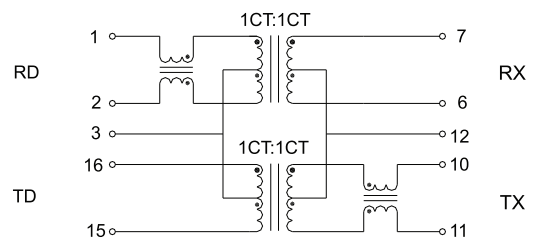
AH1618D\_, AH1629D\_



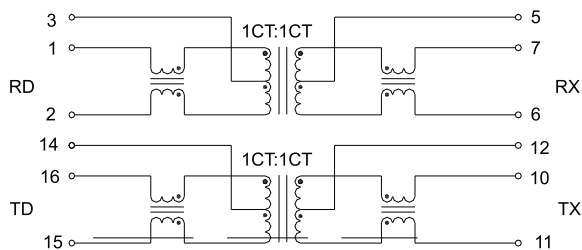
AH1620D\_



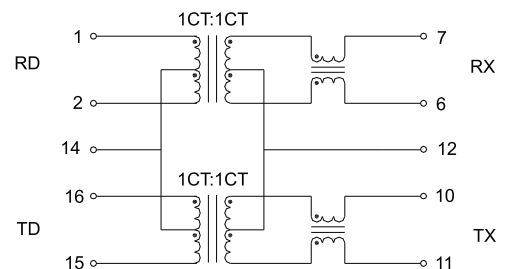
AH1623D\_



AH1626D\_, AH1640D\_



AH1634D\_

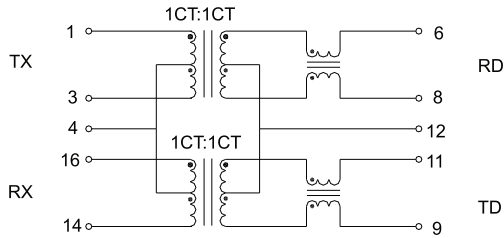




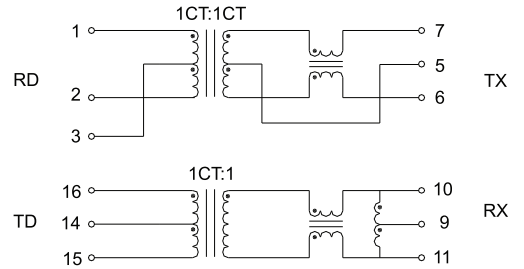
10/100 BASE-T SINGLE PORT THROUGH HOLE MAGNETICS

SCHEMATICS

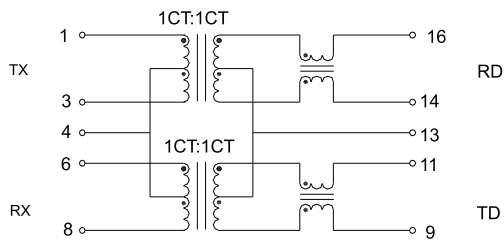
AH1635D\_



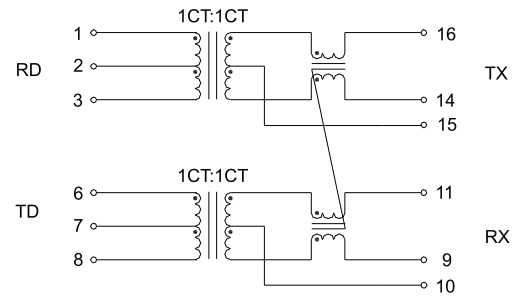
AH1636D\_



AH1639D\_



AH1642D\_



AH1644D\_

