

19 SCR's and Triacs

Economy SCR's

Type No.	Case Outline	IT	VDRM	ITSM	IGT	VGT	IH	VT @ IT	
		A	V	A	max. mA	max. V	max. mA	max. V	A
2N3005	TO18	0.35	30	6	0.2	0.8	5	1.2	0.35
2N3006	TO18	0.35	60	6	0.2	0.8	5	1.2	0.35
2N3007	TO18	0.35	100	6	0.2	0.8	5	1.2	0.35
2N3008	TO18	0.35	200	6	0.2	0.8	5	1.2	0.35
TIC44	TO18*	0.6	30	6	0.2	0.8	5	1.4	0.3
TIC45	TO18*	0.6	60	6	0.2	0.8	5	1.4	0.3
TIC46	TO18*	0.6	100	6	0.2	0.8	5	1.4	0.3
TIC47	TO18*	0.6	200	6	0.2	0.8	5	1.4	0.3
2N5060	TO92	0.8	30	6	0.2	0.8	5	1.7	1.2
2N5061	TO92	0.8	60	6	0.2	0.8	5	1.7	1.2
2N5062	TO92	0.8	100	6	0.2	0.8	5	1.7	1.2
2N5063	TO92	0.8	150	6	0.2	0.8	5	1.7	1.2
2N5064	TO92	0.8	200	6	0.2	0.8	5	1.7	1.2

* SILECT PACKAGE.

SCR's TO-220AB Plastic Package Δ

Type No.	IT	VDRM \dagger	ITSM	IGT	VGT	IH	VT @ IT	
	A	V	A	max. mA	max. V	max. mA	max. V	A
TIC106 Family	5	100V-800V	30	0.2	1	5	1.7	5
TIC116 Family	8	100V-800V	80	20	1.5	40	1.7	8
TIC126 Family	12	100V-800V	100	20	1.5	40	1.4	12

Δ See Page 17 for case outline.

NB for SCR's in TO66 plastic read: Base as Cathode, Emitter as Gate, Collector as Anode. For Triacs TO66 and TO3, Base = Main Terminal 1, Collector = Main Terminal 2, Emitter = Gate.

DIAC TI43Y 32 \pm 4V Suitable for TIC designated SCR's and Triacs. Breakover Voltage 32 \pm 4V. DO7 type package. See page 15 for case outline.

\dagger FOR VOLTAGE REQUIRED USE SUFFICES AS FOLLOWS

A	B	C	D	E	M	S	N
100V	200V	300V	400V	500V	600V	700V	800V

Triacs TO-220AB Plastic, 3A to 16A Δ

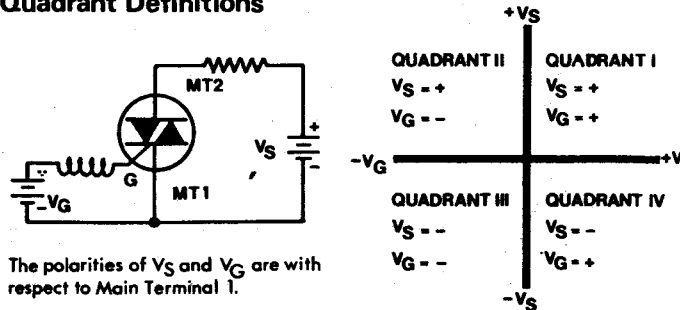
Device Type	IT (RMS)	VDRM \dagger	ITSM	IGT	IGT	VGT	VGT	VTM @ ITM	IH
	A	V	A	max. I I I III	max. IV	max. I I I III	max. IV	max. V A	max. mA
TIC201 Family	2.5	100V-800V	12	5	25	2.5	1.9	3.5	30
TIC206 Family	3	100V-800V	20	5	10	2	2.2	4.2	30
TIC225 Family	8	100V-800V	70	5 10	15	2.2	2.1	12	30
TIC226 Family	8	100V-800V	70	50		2.5	2.1	12	60
TIC236 Family	12	100V-800V	100	50		2.5	2.1	17	50
TIC246 Family	16	100V-800V	125	50		2.5	1.7	22.5	50

Triacs TO-3 Plastic, 20A to 25A Δ

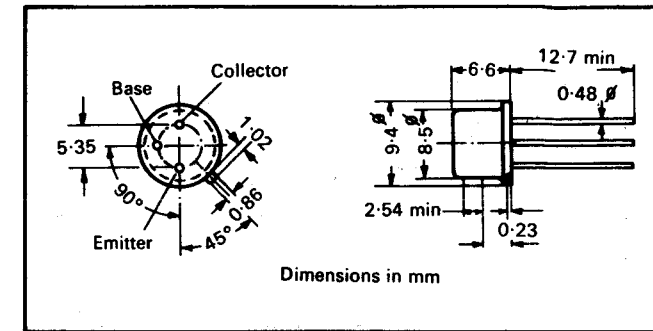
Device Type	IT (RMS)	VDRM \dagger	ITSM	IGT	IGT	VGT	VGT	VTM @ ITM	IH
	A	V	A	max. I I I III	max. IV	max. I I I III	max. IV	max. V A	max. mA
TIC253 Family	20	100V-800V	150	50		2.5	1.7	28.2	50
TIC263 Family	25	100V-800V	175	50		2.5	1.7	35.2	50

NOTE: ROMAN NUMERALS DESIGNATE THE VS, VG QUADRANTS

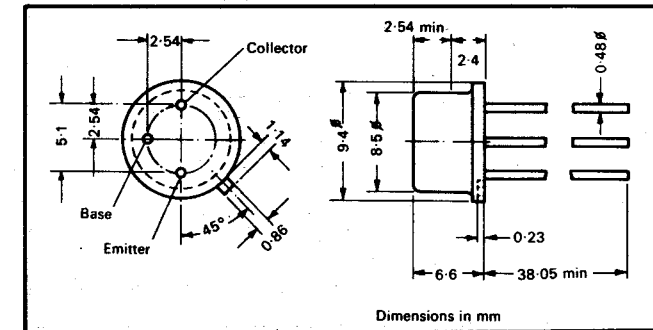
Quadrant Definitions



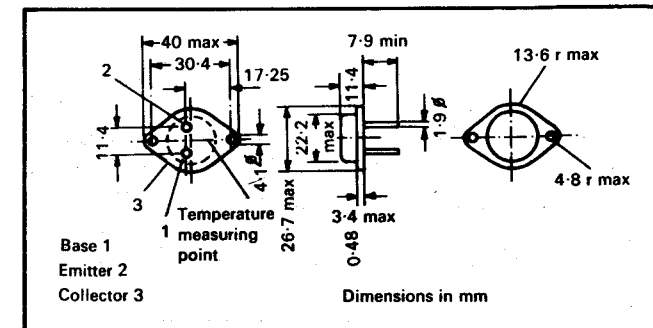
Case Outlines



TO-39



TO-5



TO-3