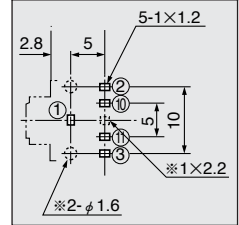
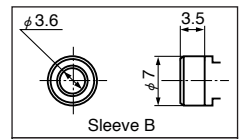
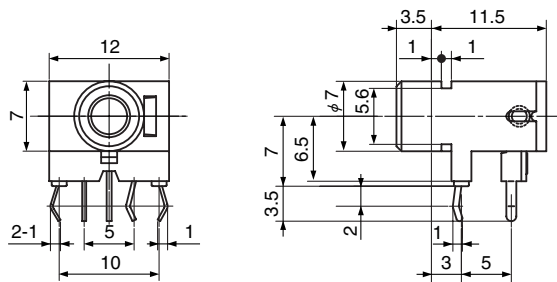
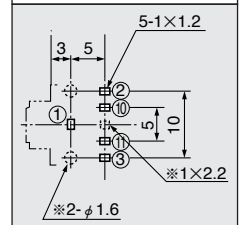
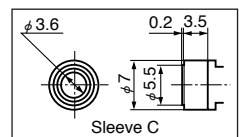


HSJ0912-01-010

h=7 (6.5) mm



Hole Layout (Bottom View)



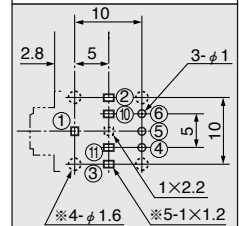
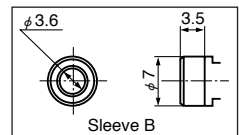
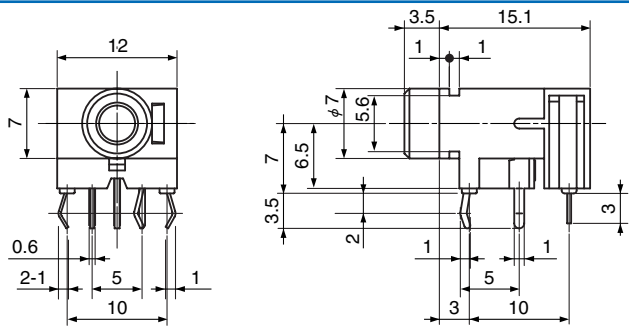
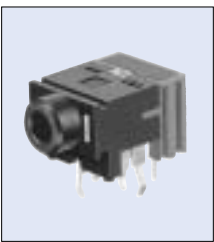
Hole Layout (Bottom View)

Sleeve	Housing Color	Switching Mode	HSJ0912-01-010	HSJ0912-01-020	HSJ0912-01-030	HSJ0912-01-040	HSJ0912-01-050	HSJ0912-01-060
B	Black	Shorted	HSJ0912-01-010	HSJ0912-01-020	HSJ0912-01-030	HSJ0912-01-040	HSJ0912-01-050	HSJ0912-01-060
	Red	Non-Shorted	HSJ0912-01-011	HSJ0912-01-021	HSJ0912-01-031	HSJ0912-01-041	HSJ0912-01-051	HSJ0912-01-061
	Green	Shorted	HSJ0912-01-012	HSJ0912-01-022	HSJ0912-01-032	HSJ0912-01-042	HSJ0912-01-052	HSJ0912-01-062
	Blue	Non-Shorted	HSJ0912-01-017	HSJ0912-01-027	HSJ0912-01-037	HSJ0912-01-047	HSJ0912-01-057	HSJ0912-01-067
C	Black	Shorted	HSJ0916-01-010	HSJ0916-01-020	HSJ0916-01-030	HSJ0916-01-040	HSJ0916-01-050	HSJ0916-01-060
	Red	Non-Shorted	HSJ0916-01-011	HSJ0916-01-021	HSJ0916-01-031	HSJ0916-01-041	HSJ0916-01-051	HSJ0916-01-061
	Green	Shorted	HSJ0916-01-012	HSJ0916-01-022	HSJ0916-01-032	HSJ0916-01-042	HSJ0916-01-052	HSJ0916-01-062
	Blue	Non-Shorted	HSJ0916-01-017	HSJ0916-01-027	HSJ0916-01-037	HSJ0916-01-047	HSJ0916-01-057	HSJ0916-01-067

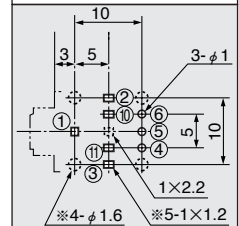
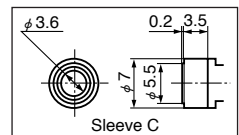
※ In the case of h=6.5mm make a hole at brokenline.

HSJ0913-01-010

h=7 (6.5) mm



Hole Layout (Bottom View)



Hole Layout (Bottom View)

Sleeve	Housing Color	Switching Mode	HSJ0913-01-010	HSJ0913-01-020	HSJ0913-01-030	HSJ0913-01-040	HSJ0913-01-050	HSJ0913-01-060
B	Black	Shorted	HSJ0913-01-010	HSJ0913-01-020	HSJ0913-01-030	HSJ0913-01-040	HSJ0913-01-050	HSJ0913-01-060
		Non-Shorted	HSJ0913-01-110	HSJ0913-01-120	HSJ0913-01-130	HSJ0913-01-140	HSJ0913-01-150	HSJ0913-01-160
	Red	Shorted	HSJ0913-01-011	HSJ0913-01-021	HSJ0913-01-031	HSJ0913-01-041	HSJ0913-01-051	HSJ0913-01-061
		Non-Shorted	HSJ0913-01-111	HSJ0913-01-121	HSJ0913-01-131	HSJ0913-01-141	HSJ0913-01-151	HSJ0913-01-161
	Green	Shorted	HSJ0913-01-012	HSJ0913-01-022	HSJ0913-01-032	HSJ0913-01-042	HSJ0913-01-052	HSJ0913-01-062
		Non-Shorted	HSJ0913-01-112	HSJ0913-01-122	HSJ0913-01-132	HSJ0913-01-142	HSJ0913-01-152	HSJ0913-01-162
	Blue	Shorted	HSJ0913-01-017	HSJ0913-01-027	HSJ0913-01-037	HSJ0913-01-047	HSJ0913-01-057	HSJ0913-01-067
		Non-Shorted	HSJ0913-01-117	HSJ0913-01-127	HSJ0913-01-137	HSJ0913-01-147	HSJ0913-01-157	HSJ0913-01-167
C	Black	Shorted	HSJ0917-01-010	HSJ0917-01-020	HSJ0917-01-030	HSJ0917-01-040	HSJ0917-01-050	HSJ0917-01-060
		Non-Shorted	HSJ0917-01-110	HSJ0917-01-120	HSJ0917-01-130	HSJ0917-01-140	HSJ0917-01-150	HSJ0917-01-160
	Red	Shorted	HSJ0917-01-011	HSJ0917-01-021	HSJ0917-01-031	HSJ0917-01-041	HSJ0917-01-051	HSJ0917-01-061
		Non-Shorted	HSJ0917-01-111	HSJ0917-01-121	HSJ0917-01-131	HSJ0917-01-141	HSJ0917-01-151	HSJ0917-01-161
	Green	Shorted	HSJ0917-01-012	HSJ0917-01-022	HSJ0917-01-032	HSJ0917-01-042	HSJ0917-01-052	HSJ0917-01-062
		Non-Shorted	HSJ0917-01-112	HSJ0917-01-122	HSJ0917-01-132	HSJ0917-01-142	HSJ0917-01-152	HSJ0917-01-162
	Blue	Shorted	HSJ0917-01-017	HSJ0917-01-027	HSJ0917-01-037	HSJ0917-01-047	HSJ0917-01-057	HSJ0917-01-067
		Non-Shorted	HSJ0917-01-117	HSJ0917-01-127	HSJ0917-01-137	HSJ0917-01-147	HSJ0917-01-157	HSJ0917-01-167

※ In the case of h=6.5mm make a hole at brokenline.