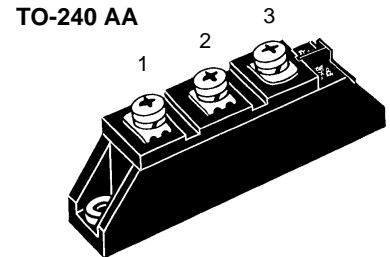


Fast Recovery Epitaxial Diode (FRED) Module

MEA 95-06 DA
MEK 95-06 DA
MEE 95-06 DA

$V_{RRM} = 600\text{ V}$
 $I_{FAV} = 95\text{ A}$
 $t_{rr} = 250\text{ ns}$

V_{RSM} V	V_{RRM} V	Type						
600	600	<table border="0"> <tr> <td>MEA95-06 DA</td> <td>MEK 95-06 DA</td> <td>MEE 95-06 DA</td> </tr> <tr> <td></td> <td></td> <td></td> </tr> </table>	MEA95-06 DA	MEK 95-06 DA	MEE 95-06 DA			
MEA95-06 DA	MEK 95-06 DA	MEE 95-06 DA						



Symbol	Test Conditions	Maximum Ratings
I_{FRMS}	$T_{case} = 75^{\circ}\text{C}$	142 A
$I_{FAV}^{①}$	$T_{case} = 75^{\circ}\text{C}$; rectangular, $d = 0.5$	95 A
I_{FRM}	$t_p < 10\ \mu\text{s}$; rep. rating, pulse width limited by T_{VJM}	TBD A
I_{FSM}	$T_{VJ} = 45^{\circ}\text{C}$; $t = 10\text{ ms}$ (50 Hz), sine	1200 A
	$t = 8.3\text{ ms}$ (60 Hz), sine	1300 A
	$T_{VJ} = 150^{\circ}\text{C}$; $t = 10\text{ ms}$ (50 Hz), sine	1080 A
	$t = 8.3\text{ ms}$ (60 Hz), sine	1170 A
I^2t	$T_{VJ} = 45^{\circ}\text{C}$; $t = 10\text{ ms}$ (50 Hz), sine	7200 A ² s
	$t = 8.3\text{ ms}$ (60 Hz), sine	7100 A ² s
	$T_{VJ} = 150^{\circ}\text{C}$; $t = 10\text{ ms}$ (50 Hz), sine	5800 A ² s
	$t = 8.3\text{ ms}$ (60 Hz), sine	5700 A ² s
T_{VJ}		-40...+150 °C
T_{stg}		-40...+125 °C
T_{Hmax}		110 °C
P_{tot}	$T_{case} = 25^{\circ}\text{C}$	280 W
V_{ISOL}	50/60 Hz, RMS $t = 1\text{ min}$	3000 V~
	$I_{ISOL} \leq 1\text{ mA}$ $t = 1\text{ s}$	3600 V~
M_d	Mounting torque (M5)	2.5-4/22-35 Nm/lb.in.
	Terminal connection torque (M5)	2.5-4/22-35 Nm/lb.in.
d_s	Creep distance on surface	12.7 mm
d_A	Strike distance through air	9.6 mm
a	Maximum allowable acceleration	50 m/s ²
Weight		90 g

Features

- International standard package with DCB ceramic base plate
- Planar passivated chips
- Short recovery time
- Low switching losses
- Soft recovery behaviour
- Isolation voltage 3600 V~
- UL registered E 72873

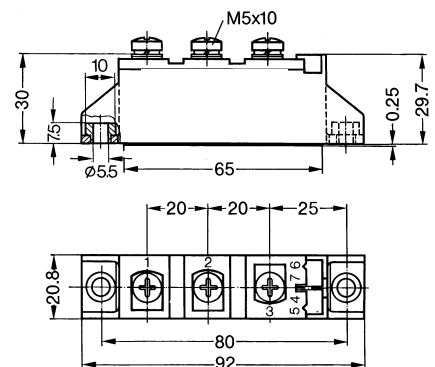
Applications

- Antiparallel diode for high frequency switching devices
- Free wheeling diode in converters and motor control circuits
- Inductive heating and melting
- Uninterruptible power supplies (UPS)
- Ultrasonic cleaners and welders

Advantages

- High reliability circuit operation
- Low voltage peaks for reduced protection circuits
- Low noise switching
- Low losses

Dimensions in mm (1 mm = 0.0394")



Symbol	Test Conditions	Characteristic Values (per diode)		
		typ.	max.	
I_R	$T_{VJ} = 25^{\circ}\text{C}$ $V_R = V_{RRM}$		2 mA	
	$T_{VJ} = 25^{\circ}\text{C}$ $V_R = 0.8 \cdot V_{RRM}$		0.5 mA	
	$T_{VJ} = 125^{\circ}\text{C}$ $V_R = 0.8 \cdot V_{RRM}$		34 mA	
V_F	$I_F = 100\text{ A}$; $T_{VJ} = 125^{\circ}\text{C}$		1.36 V	
	$T_{VJ} = 25^{\circ}\text{C}$		1.55 V	
	$I_F = 300\text{ A}$; $T_{VJ} = 125^{\circ}\text{C}$		2.05 V	
	$T_{VJ} = 25^{\circ}\text{C}$		2.09 V	
V_{T0}	For power-loss calculations only		1.01 V	
r_T	$T_{VJ} = 125^{\circ}\text{C}$		2.85 mΩ	
R_{thJH}	DC current		0.550 K/W	
R_{thJC}	DC current		0.450 K/W	
t_{rr}	$I_F = 100\text{ A}$ $\left\{ \begin{array}{l} T_{VJ} = 100^{\circ}\text{C} \\ T_{VJ} = 25^{\circ}\text{C} \\ T_{VJ} = 100^{\circ}\text{C} \end{array} \right.$	250	300 ns	
			$V_R = 300\text{ V}$	14 A
			$-di/dt = 200\text{ A}/\mu\text{s}$	21 A

① I_{FAV} rating includes reverse blocking losses at T_{VJM} , $V_R = 0.6 V_{RRM}$, duty cycle $d = 0.5$
Data according to IEC 60747

IXYS reserves the right to change limits, test conditions and dimensions

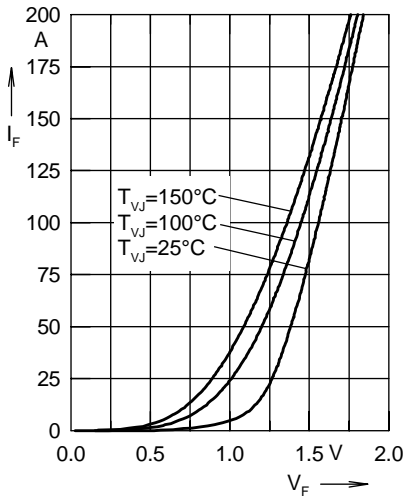


Fig. 1 Forward current I_F versus voltage drop V_F per leg

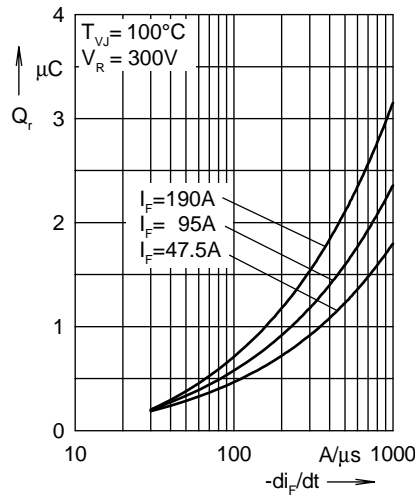


Fig. 2 Reverse recovery charge Q_r versus $-di_F/dt$

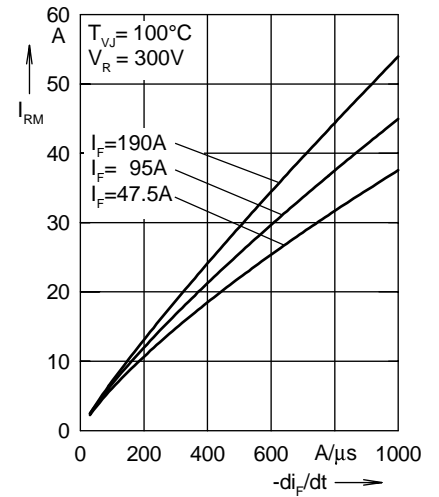


Fig. 3 Peak reverse current I_{RM} versus $-di_F/dt$

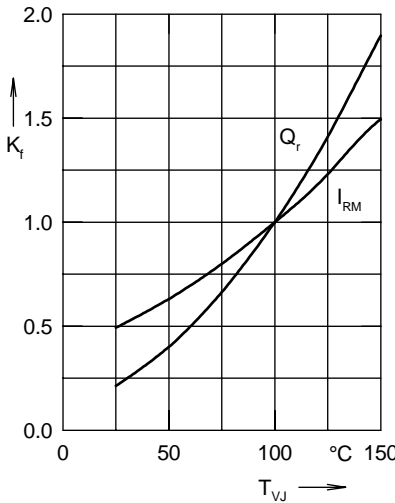


Fig. 4 Dynamic parameters Q_r , I_{RM} versus junction temperature T_{VJ}

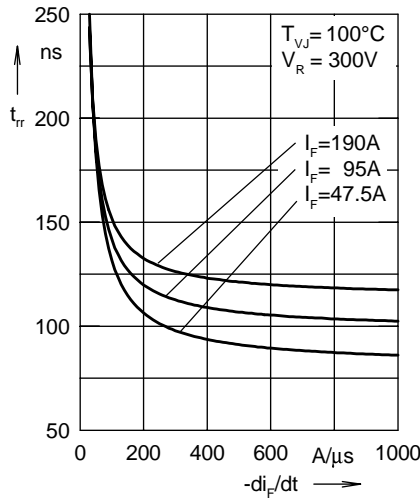


Fig. 5 Recovery time t_{rr} versus $-di_F/dt$

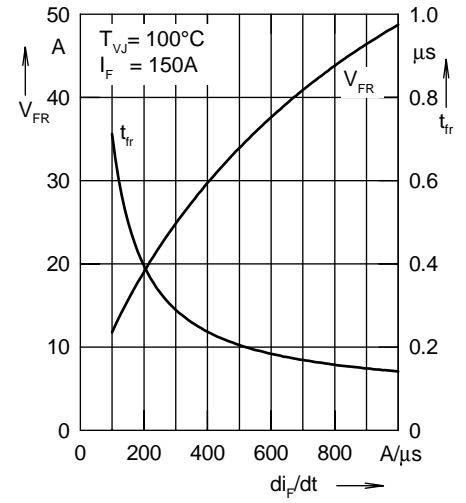


Fig. 6 Peak forward voltage V_{FR} and t_{fr} versus di_F/dt

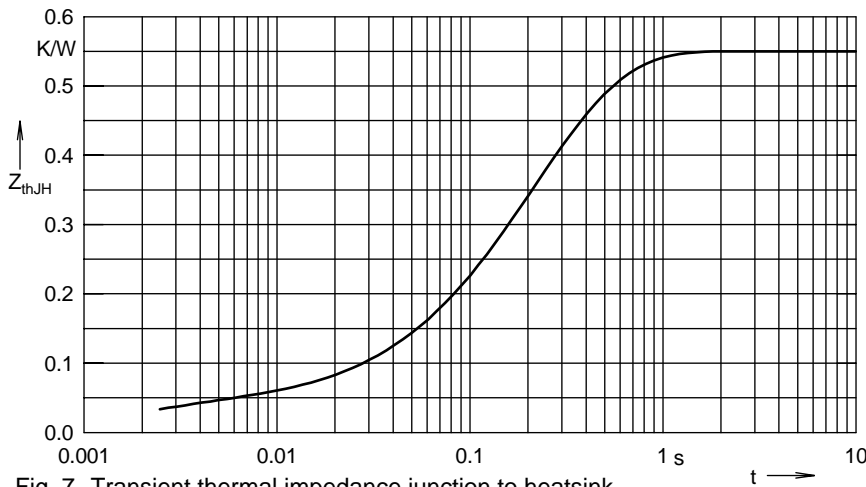


Fig. 7 Transient thermal impedance junction to heatsink

Constants for Z_{thJH} calculation:

i	R_{thi} (K/W)	t_i (s)
1	0.037	0.002
2	0.138	0.134
3	0.093	0.25
4	0.282	0.274