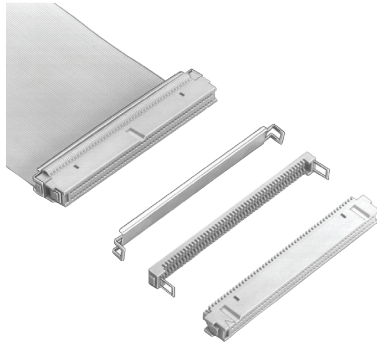


TEST & MEASUREMENT  
D-SUB CONNECTORS  
ENCLOSURES  
POWER  
AUTOMATION & CONTROL  
OPTOELECTRONICS  
PASSIVE & ACTIVE  
ASSEMBLY  
INDEX

Mini Flat Cable Connectors

PAK 50 0.050" x 0.100" Tripolarized Wiremount Sockets for 0.025"



- ▶ Uses 3M Cable Series 3365
- ▶ Rugged Tripolarized Mating System
- ▶ Hill-n-Dale Design Provides Integral Strain Relief
- ▶ Insert Molded Copper Alloy Contacts for Superior Strength and Reliability
- ▶ Flammability Rating: UL 94 V-0
- ▶ Contact Material: Copper Alloy
- ▶ Color: Gray
- ▶ Wire Accommodation: 30 AWG Solid
- ▶ UL File No.: E68080
- ▶ CSA File No.: LR 40971

Stock No.	Mfr.'s Type	No. of Contacts	EACH		
			1-24	25-49	50-99
70114792	82020-6006	20	5.50	5.34	—
70114793	82026-6006	26	5.96	5.79	—
70114794	82036-6006	36	7.95	7.75	—
70114795	82040-6006	40	7.96	—	—
70114796	82050-6006	50	10.92	10.57	10.07
70114797	82060-6006	60	11.63	—	—
70114798	82068-6006	68	12.87	—	—
70114799	82080-6006	80	14.73	—	—
70114800	82100-6006	100	17.85	—	—

"D" Ribbon Connectors

All Plastic  
These connectors are available in bail mount, screw mount, and combination mount. Those with type number suffix 1000 are combination; with 1001 bail mount and with 1002 screw mount.

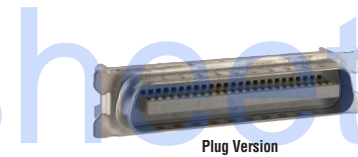
Metal Face  
These connectors are available in bail mount, screw mount, and combination mount. Those with type number suffix 2000 are combination; with 2001 bail mount and with 2002 screw mount.

Plug Version — All Plastic



Stock No.	Mfr.'s Type	No. of Contacts	Description	EACH		
				1-24	25-49	50+
70114870	3548-1000	24	All Plastic	8.38	7.74	7.18
70114871	3548-1001	24	All Plastic	8.13	7.56	—
70114872	3548-1002	24	All Plastic	17.38	15.80	—
70114873	3366-1000	36	All Plastic	8.10	7.52	—
70114874	3366-1001	36	All Plastic	21.38	19.44	17.82
70114875	3366-1002	36	All Plastic	13.00	12.07	—
70114876	3564-1000	50	All Plastic	17.20	15.77	14.55
70114877	3564-1001	50	All Plastic	10.25	9.50	9.00
70114878	3564-1002	50	All Plastic	16.73	15.44	14.34

Plug Version — Metal Face



70114621	3564-2000	50	Metal-Face	39.27	35.70	32.73
70114622	3564-2001	50	Metal-Face	18.25	—	—

Socket Version — All Plastic



Stock No.	Mfr.'s Type	No. of Contacts	Description	EACH		
				1-24	25-49	50-99
70114879	3549-1000	24	All Plastic	10.59	—	—
70114880	3549-1001	24	All Plastic	7.53	—	—
70114881	3549-1002	24	All Plastic	14.04	12.96	12.04
70114882	3367-1000	36	All Plastic	21.11	—	—
70114883	3367-1001	36	All Plastic	15.23	13.85	12.68
70114884	3367-1002	36	All Plastic	14.94	13.79	—
70114885	3565-1000	50	All Plastic	14.83	13.48	12.36
70114886	3565-1001	50	All Plastic	8.04	—	—
70114887	3565-1002	50	All Plastic	13.99	12.91	11.99

Socket Version — Metal Face



Stock No.	Mfr.'s Type	No. of Contacts	Description	EACH		
				1-24	25-49	50-99
70114623	3573-2000	14	Metal-Face	26.32	—	—
70114624	3573-2002	14	Metal-Face	4.07	—	—
70114625	3549-2000	24	Metal-Face	19.97	18.16	16.64
70114626	3549-2002	24	Metal-Face	12.10	10.37	9.90
70114627	3367-2000	36	Metal-Face	8.28	—	—
70114628	3367-2002	36	Metal-Face	17.29	—	—
70114629	3565-2000	50	Metal-Face	10.85	9.94	9.18
70114630	3565-2002	50	Metal-Face	25.23	22.94	21.03

Strain Reliefs



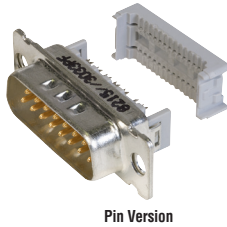
Stock No.	Mfr.'s Type	Description	EACH		
			1-24	25-49	50-99
70114890	3448-60	14 Contact	1.82	—	—
70114891	3448-61	24 Contact	4.08	3.77	3.61
70114892	3448-62	36 Contact	2.46	2.28	—
70114893	3448-63	50 Contact	3.38	—	—

"D" Subminiature Connectors

Connectors are fully compatible with all 0.050" spaced flat cables with 26 and 28 AWG solid/stranded or 30 AWG solid wire. The low profile tin-plated metal shell ensures long-term reliability and EMI/ESD reduction. Pins and wiping leaf are plated with 30 µr gold. **Mounting Style:** 6000 Series — Through hole; 6003 Series — 4-40 Threaded insert.

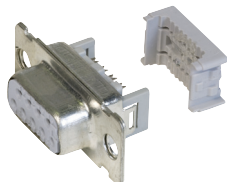
Pin Version

Stock No.	Mfr.'s Type	No. of Contacts	EACH		
			1-24	25-49	50-99
70114894	8209-6000	9	4.47	4.10	3.79
70114999	8209-6003	9	4.64	4.25	3.92
70114895	8215-6000	15	5.55	5.09	4.70
70115000	8215-6003	15	6.38	5.86	5.41
70114896	8225-6000	25	6.19	5.62	5.09
70115001	8225-6003	25	7.16	6.57	6.06
70114897	8237-6000	37	7.76	7.12	6.55
70115002	8237-6003	37	7.54	7.01	—



Socket Version

70114898	8309-6000	9	3.82	3.50	3.23
70115003	8309-6003	9	4.98	4.56	4.22
70114899	8315-6000	15	4.59	4.21	3.88
70115004	8315-6003	15	6.86	6.29	5.81
70114900	8325-6000	25	5.98	5.82	5.25
70115005	8325-6003	25	6.66	6.10	5.63
70114901	8337-6000	37	7.40	6.90	6.38
70115006	8337-6003	37	8.91	8.17	7.54



Strain Reliefs

70114717	3448-8D09A		.60	.56	.53
70114718	3448-8D15A	15	1.53	1.32	1.24
70114719	3448-8D25A	25	.62	.51	.47
70114721	3448-8D37A	37	.53	.47	.44

"D" Subminiature Junction Shells for EMI/ESD Protection



Designed for use with 6000 Series D-sub connectors. The low profile tin-plated metal shell ensures long-term reliability and EMI/ESD reduction.

Stock No.	Mfr.'s Type	No. of Contacts	EACH		
			1-24	25-49	50-99
70114902	3357-9209	9	3.37	3.10	2.97
70114903	3357-9215	15	3.59	3.34	3.11
70114904	3357-9225	25	4.69	4.30	3.97
70114905	3357-9237	37	10.52	9.71	9.02