

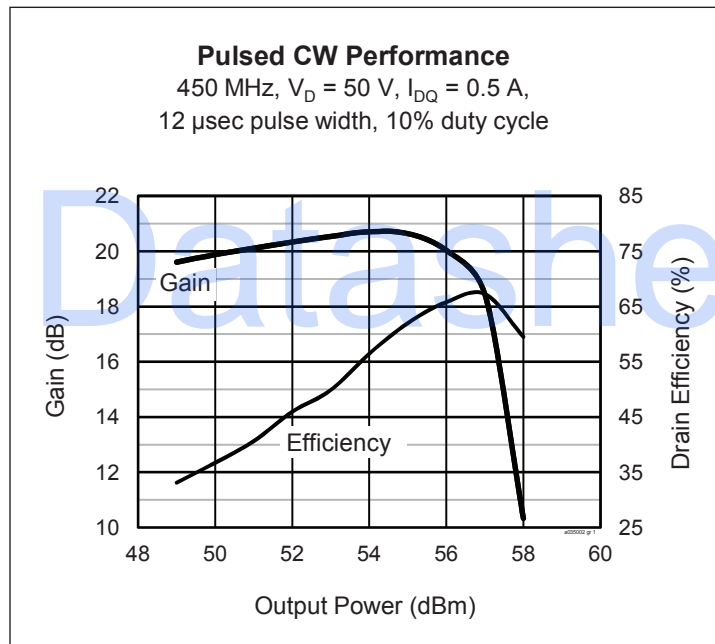
Thermally-Enhanced High Power RF LDMOS FET 500 W, 50 V, 390 – 450 MHz

Description

The PTVA035002EV LDMOS FET is designed for use in power amplifier applications in the 390 MHz to 450 MHz frequency band. Features include high gain and thermally-enhanced package with bolt-down flange. Manufactured with Infineon's advanced LDMOS process, this device provides excellent thermal performance and superior reliability.



PTVA035002EV
Package H-36275-4



Features

- Unmatched input and output
- High gain and efficiency
- Integrated ESD protection
- Human Body Model Class 2 (per ANSI/ESDA/ JEDEC JS-001)
- Low thermal resistance
- Pb-free and RoHS-compliant
- Capable of withstanding a 13:1 load mismatch at 57 dBm under pulsed conditions: 12 μsec pulse width, 10% duty cycle

RF Characteristics

Pulsed CW Class AB Characteristics (not subject to production test, verified by design/characterization in Infineon test fixture)
 $V_{DD} = 50\text{ V}$, $I_{DQ} = 0.5\text{ A}$, $P_{OUT} = 500\text{ W}$, $f = 450\text{ MHz}$, 12 μsec pulse width, 10% duty cycle

Characteristic	Symbol	Min	Typ	Max	Unit
Gain	G_{ps}	—	18	—	dB
Drain Efficiency	η_D	—	64	—	%

All published data at $T_{CASE} = 25^\circ\text{C}$ unless otherwise indicated

ESD: Electrostatic discharge sensitive device—observe handling precautions!

RF Characteristics

Pulsed CW Characteristics (tested in Infineon test fixture)

$V_{DD} = 50\text{ V}$, $V_{GS} = 2.9\text{ V}$, $I_{DQ} = 0.0\text{ A}$, $P_{OUT} = 500\text{ W}$, $f = 450\text{ MHz}$, 12 μsec pulse width, 10% duty cycle

Characteristic	Symbol	Min	Typ	Max	Unit
Gain	G_{ps}	14.75	15.5	—	dB
Drain Efficiency	η_D	63	66	—	%

DC Characteristics (each side)

Characteristic	Conditions	Symbol	Min	Typ	Max	Unit
Drain-Source Breakdown Voltage	$V_{GS} = 0\text{ V}$, $I_{DS} = 10\text{ mA}$	$V_{(BR)DSS}$	105	—	—	V
Drain Leakage Current	$V_{DS} = 50\text{ V}$, $V_{GS} = 0\text{ V}$	I_{DSS}	—	—	1.0	μA
	$V_{DS} = 105\text{ V}$, $V_{GS} = 0\text{ V}$	I_{DSS}	—	—	10.0	μA
On-State Resistance	$V_{GS} = 10\text{ V}$, $V_{DS} = 0.1\text{ V}$	$R_{DS(on)}$	—	0.1	—	Ω
Operating Gate Voltage	$V_{DS} = 50\text{ V}$, $I_{DQ} = 600\text{ mA}$	V_{GS}	—	3.70	—	V
Gate Leakage Current	$V_{GS} = 10\text{ V}$, $V_{DS} = 0\text{ V}$	I_{GSS}	—	—	1.0	μA

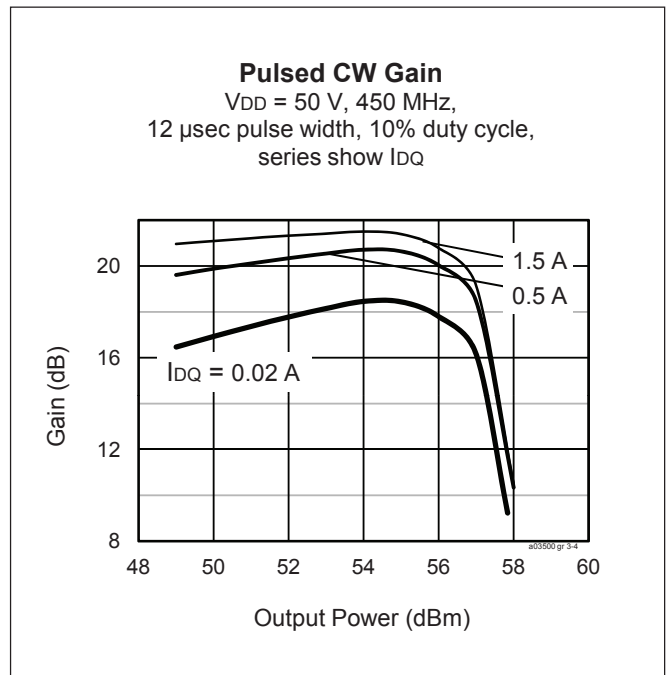
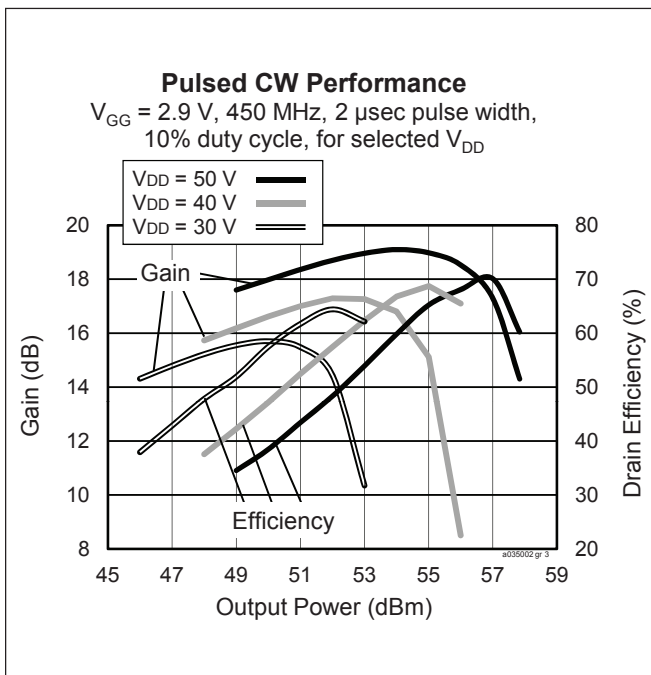
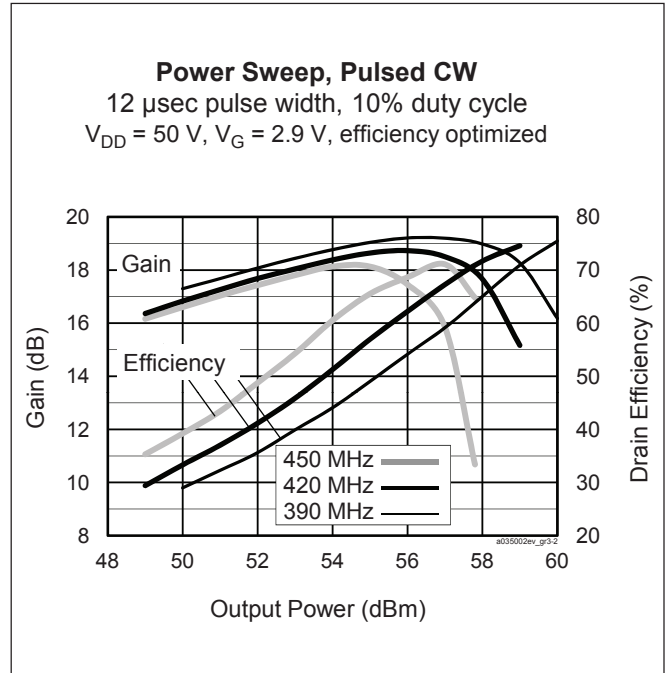
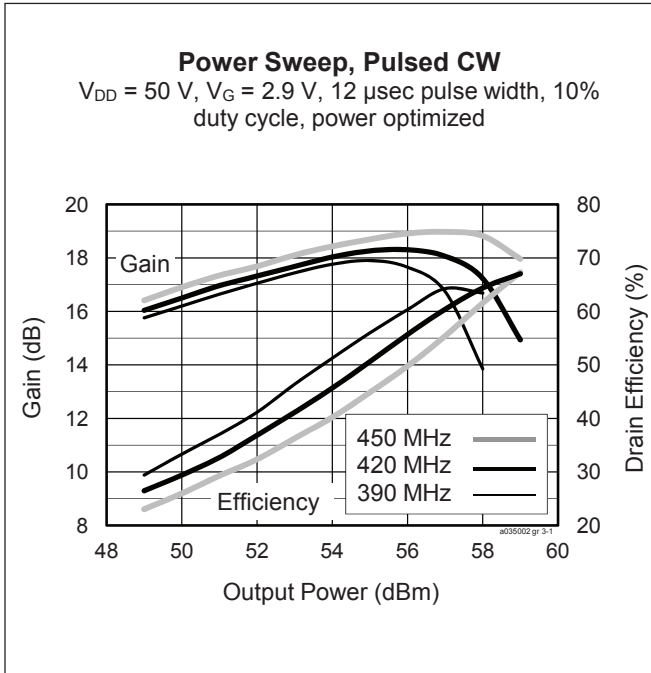
Maximum Ratings

Parameter	Symbol	Value	Unit
Drain-Source Voltage	V_{DSS}	105	V
Gate-Source Voltage	V_{GS}	-6 to +12	V
Operating Voltage	V_{DD}	0 to +55	V
Junction Temperature	T_J	225	$^{\circ}\text{C}$
Storage Temperature Range	T_{STG}	-65 to +150	$^{\circ}\text{C}$
Thermal Resistance ($T_{CASE} = 70^{\circ}\text{C}$, 300 W CW)	$R_{\theta JC}$	0.20	$^{\circ}\text{C/W}$

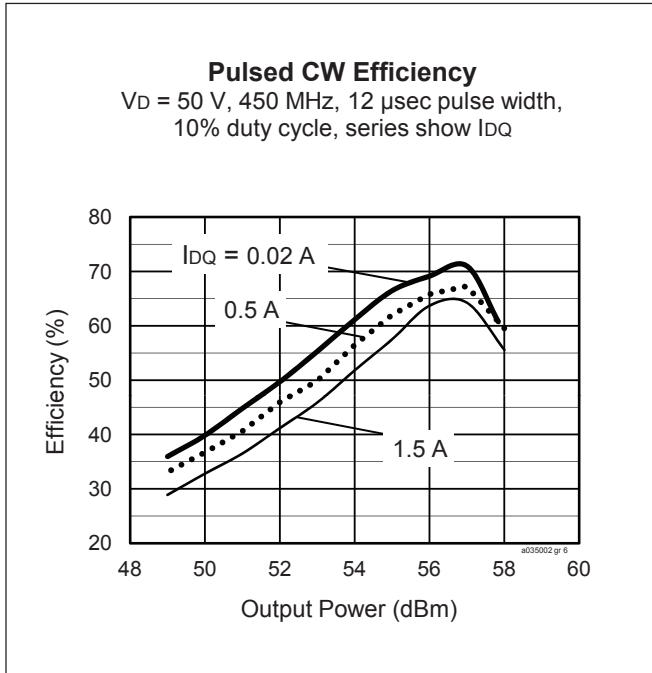
Ordering Information

Type and Version	Order Code	Package Description	Shipping
PTVA035002EV V1 R0	PTVA035002EVV1R0XTMA1	H-36275-4, bolt-down	Tape & Reel, 50pcs
PTVA035002EV V1 R250	PTVA035002EVV1R250XTMA1	H-36275-4, bolt-down	Tape & Reel, 250pcs

Typical Performance (data taken in production test fixture)

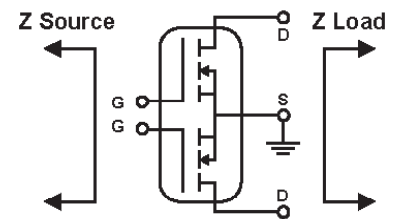


Typical Performance (cont.)

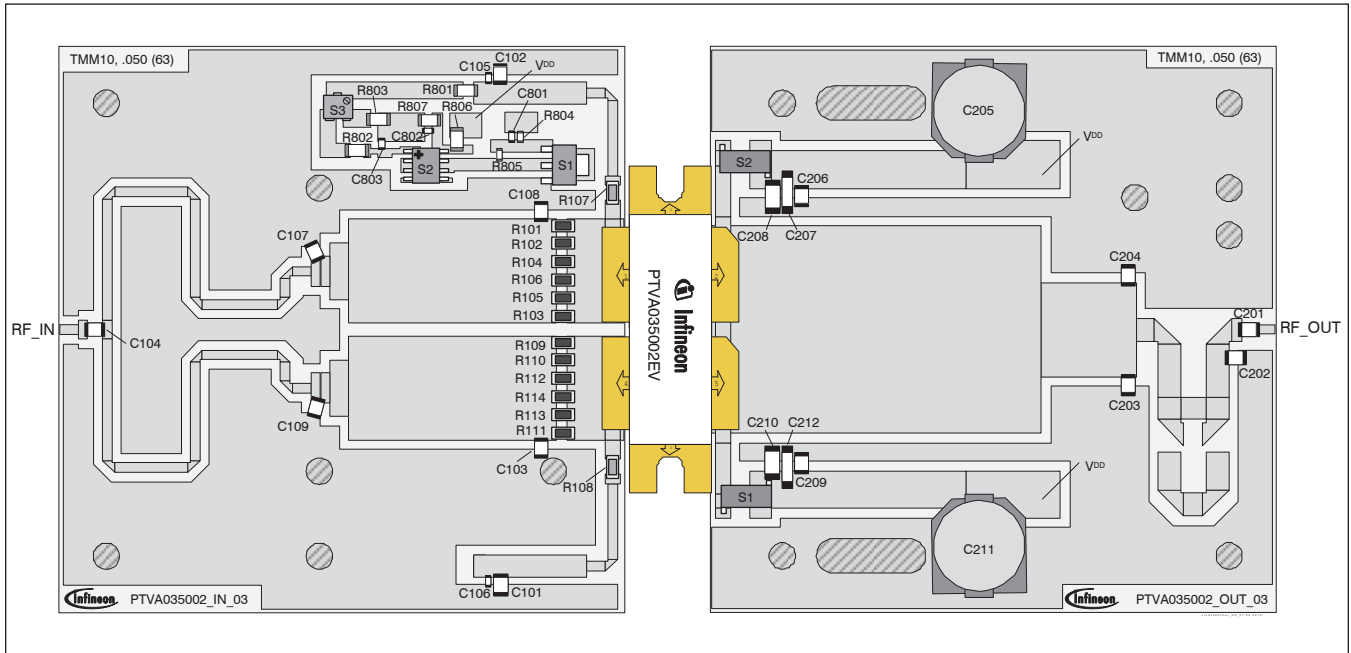


Broadband Circuit Impedance

Frequency MHz	Z Source Ω		Z Load Ω	
	R	jX	R	jX
390	1.28	-0.12	1.80	-2.22
405	1.35	0.18	1.86	-1.91
420	1.43	0.48	1.92	-1.62
435	1.54	0.76	1.98	-1.35
450	1.67	1.04	2.02	-1.11



Reference Circuit, 390 – 450 MHz



Reference circuit assembly diagram (not to scale)*

Find Gerber files for this test fixture on the Infineon Web site at www.infineon.com/rfpower

Reference Circuit (cont.)

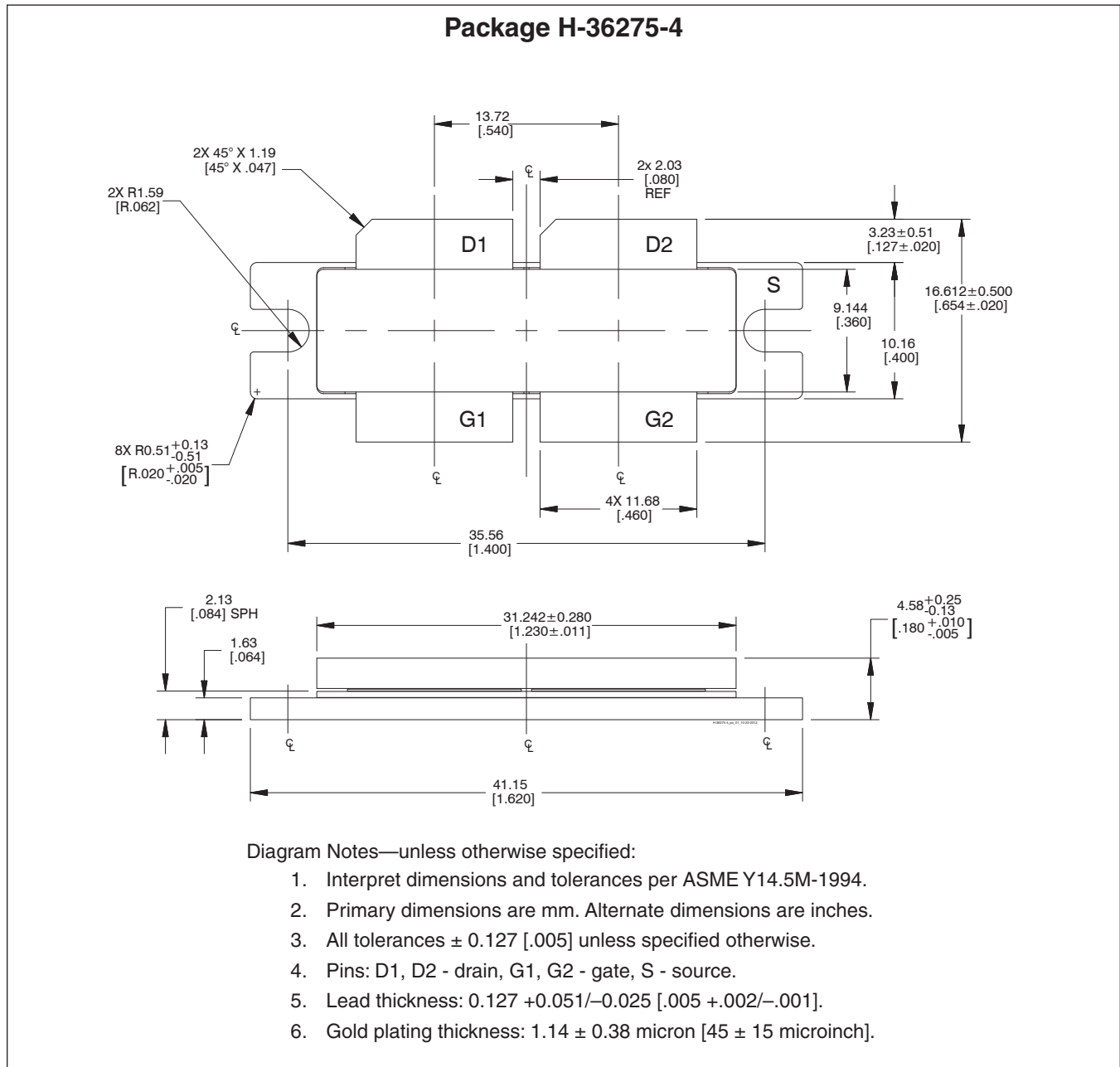
Reference Circuit Assembly

DUT	PTVA035002EV
Test Fixture Part No.	LTN/PTVA035002EV
PCB	Rogers TMM10, 1.27 mm [0.050"] thick, 2 oz. copper, $\epsilon_r = 9.2$

Components Information

Component	Description	Suggested Manufacturer	P/N
Input			
C101, C102, C104	Capacitor, 300 pF	ATC	ATC100B301KW200X
C103, C108	Capacitor, 20 pF	ATC	ATC100B200KW500X
C105, C106, C801, C802, C803	Capacitor, 1000 pF	Panasonic Electronic Components	ECJ-1VB1H102K
C107, C109	Capacitor, 6.2 pF	ATC	ATC100B6R2CT500X
R101, R102, R103, R104, R105, R106, R109, R110, R111, R112, R113, R114	Resistor, 5.6 Ω	Panasonic Electronic Components	ERJ-8GEYJ5R6V
R107, R108	Resistor, 1000 Ω	Panasonic Electronic Components	ERJ-8GEYJ102V
R801	Resistor, 100 Ω	Panasonic Electronic Components	ERJ-8GEYJ101V
R802	Resistor, 2000 Ω	Panasonic Electronic Components	ERJ-8GEYJ202V
R803	Resistor, 3600 Ω	Panasonic Electronic Components	ERJ-8GEYJ362V
R804	Resistor, 1300 Ω	Panasonic Electronic Components	ERJ-3GEYJ132V
R805	Resistor, 1200 Ω	Panasonic Electronic Components	ERJ-3GEYJ122V
R806	Resistor, 2400 Ω	Panasonic Electronic Components	ERJ-8GEYJ242V
R807	Resistor, 6200 Ω	Panasonic Electronic Components	ERJ-8GEYJ622V
S1	Transistor	Infineon Technologies	BCP56
S2	Voltage regulator	Texas Instruments	LM7805
S3	Potentiometer	Bourns Inc.	3224W-1-202E
Output			
C201, C206, C209	Capacitor, 300 pF	ATC	ATC100B301KW200X
C202	Capacitor, 3 pF	ATC	ATC100B3R0CW500X
C203, C204	Capacitor, 4.3 pF	ATC	ATC100B4R3CW500X
C205, C211	Capacitor, 100 μ F	United Chemi-Con	EMVE101ARA101MKE0S
C207, C212	Capacitor, 10 μ F	TDK Corporation	C5750X7S2A106M230KB
C208, C210	Capacitor, 2.2 μ F	TDK Corporation	C4532X7R2A225K230KA
S1, S2	Inductor, 17.5 nH	Coilcraft	B06TGLB

Package Outline Specifications



Find the latest and most complete information about products and packaging at the Infineon Internet page <http://www.infineon.com/rfpower>

Revision History

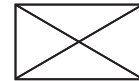
Revision	Date	Data Sheet Type	Page	Subjects (major changes since last revision)
01	2010-10-07	Advance	All	Data Sheet reflects advance specification for product development
02	2010-12-09	Advance	1, 2	Added ESD and VSWR information and revised conditions of test, Revise conditions of test.
03	2011-04-28	Preliminary	All	Convert to Preliminary Data Sheet, adding performance graphs, substantiating some characterizations.
04	2012-02-24	Production	All 4 – 9	Convert to final Data Sheet for production-released product. Add impedance data, Add reference circuit
05.1	2016-04-19	Production	1, 2	Added ESD rating, updated ordering information
05.2	2016-06-08	Production	2	Updated ordering information to include R250
05.3	2017-02-02	Production	2	Added operating voltage and updated junction temperature

We Listen to Your Comments

Any information within this document that you feel is wrong, unclear or missing at all?
Your feedback will help us to continuously improve the quality of this document.
Please send your proposal (including a reference to this document) to:

highpowerRF@infineon.com

To request other information, contact us at:
+1 877 465 3667 (1-877-GO-LDMOS) USA
or +1 408 776 0600 International



Edition 2017-02-02

Published by
Infineon Technologies AG
85579 Neubiberg, Germany

© 2010 Infineon Technologies AG
All Rights Reserved.

Legal Disclaimer

The information given in this document shall in no event be regarded as a guarantee of conditions or characteristics. With respect to any examples or hints given herein, any typical values stated herein and/or any information regarding the application of the device, Infineon Technologies hereby disclaims any and all warranties and liabilities of any kind, including without limitation, warranties of non-infringement of intellectual property rights of any third party.

Information

For further information on technology, delivery terms and conditions and prices, please contact the nearest Infineon Technologies Office (www.infineon.com/rfpower).

Warnings

Due to technical requirements, components may contain dangerous substances. For information on the types in question, please contact the nearest Infineon Technologies Office.

Infineon Technologies components may be used in life-support devices or systems only with the express written approval of Infineon Technologies, if a failure of such components can reasonably be expected to cause the failure of that life-support device or system or to affect the safety or effectiveness of that device or system. Life support devices or systems are intended to be implanted in the human body or to support and/or maintain and sustain and/or protect human life. If they fail, it is reasonable to assume that the health of the user or other persons may be endangered.