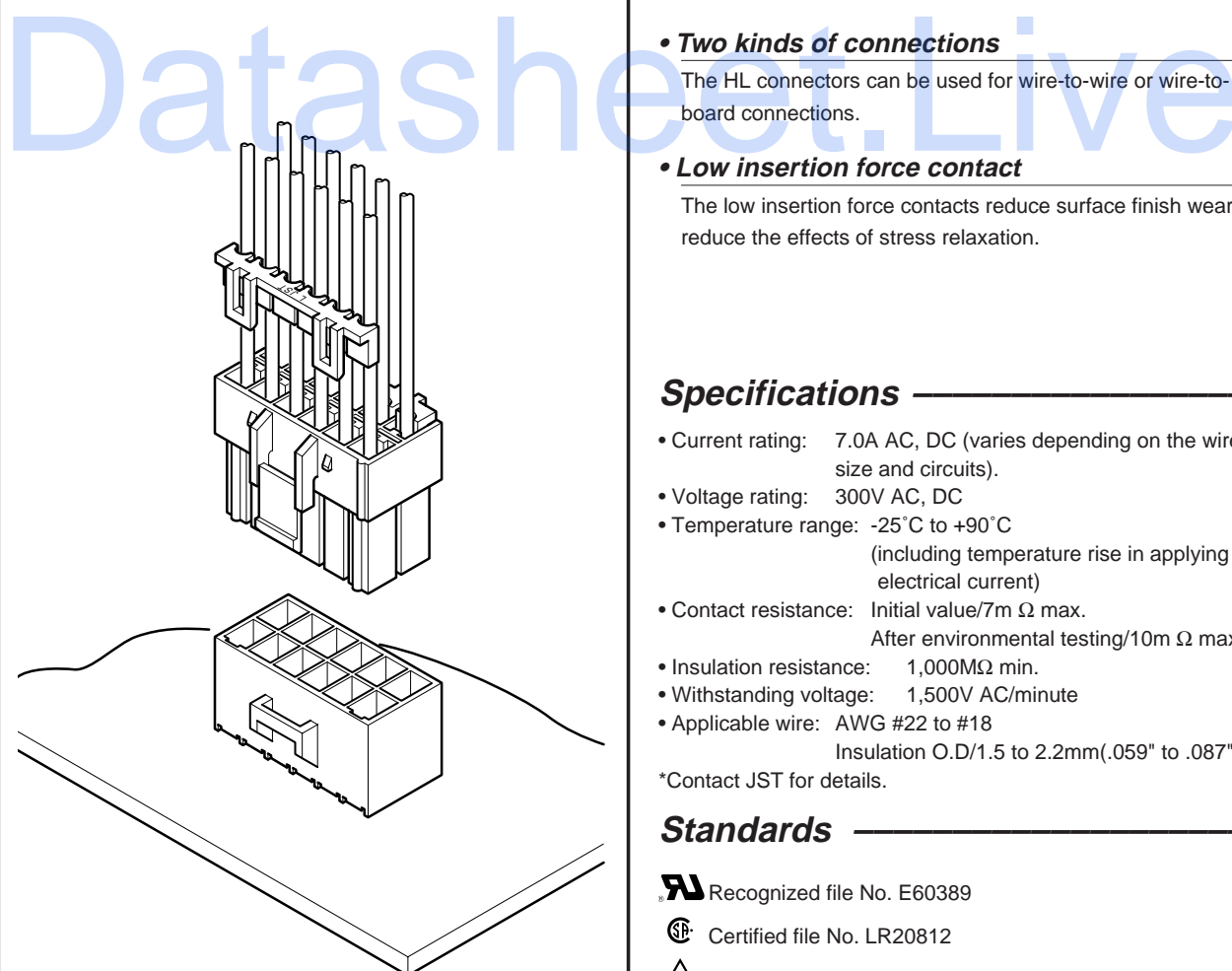


HL CONNECTOR

Disconnectable Crimp style connectors



Features

• Housing lances for contact retention

Since the contact retention lances are part of the housing rather than protruding from the contact, they cannot be damaged by handling. They allow the contact to be easily inserted and securely locked into the housing.

• Secondary retainer

The secondary retainer is optionally available. This retainer ensures that the contacts are fully seated and locked in the housing and prevents their accidental release. Installed after the contacts are inserted, the secondary retainer locks and secures the contacts.

• Inter-housing lock

The inter-housing lock secures the plug to the receptacle and prevents accidental disconnection. The lock is protected and is not affected by external forces that might result from the routing of wires during assembly.

• Two kinds of connections

The HL connectors can be used for wire-to-wire or wire-to-board connections.

• Low insertion force contact

The low insertion force contacts reduce surface finish wear and reduce the effects of stress relaxation.

Specifications

- Current rating: 7.0A AC, DC (varies depending on the wire size and circuits).
- Voltage rating: 300V AC, DC
- Temperature range: -25°C to +90°C
(including temperature rise in applying electrical current)
- Contact resistance: Initial value/7m Ω max.
After environmental testing/10m Ω max.
- Insulation resistance: 1,000MΩ min.
- Withstanding voltage: 1,500V AC/minute
- Applicable wire: AWG #22 to #18
Insulation O.D/1.5 to 2.2mm (.059" to .087")

*Contact JST for details.

Standards

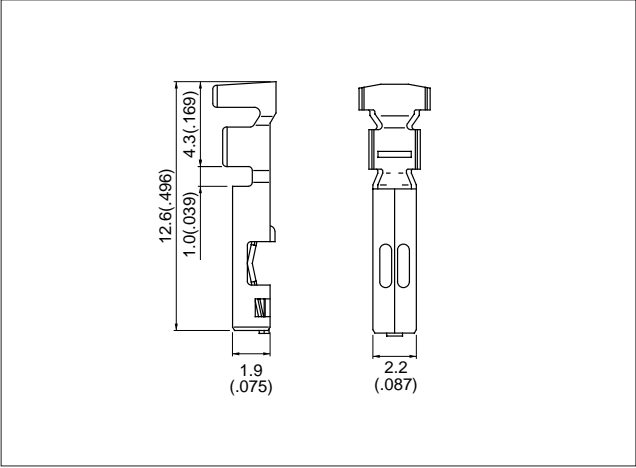
Recognized file No. E60389

Certified file No. LR20812

File No. R9551072 (conforms to DIN/VDE 0627)

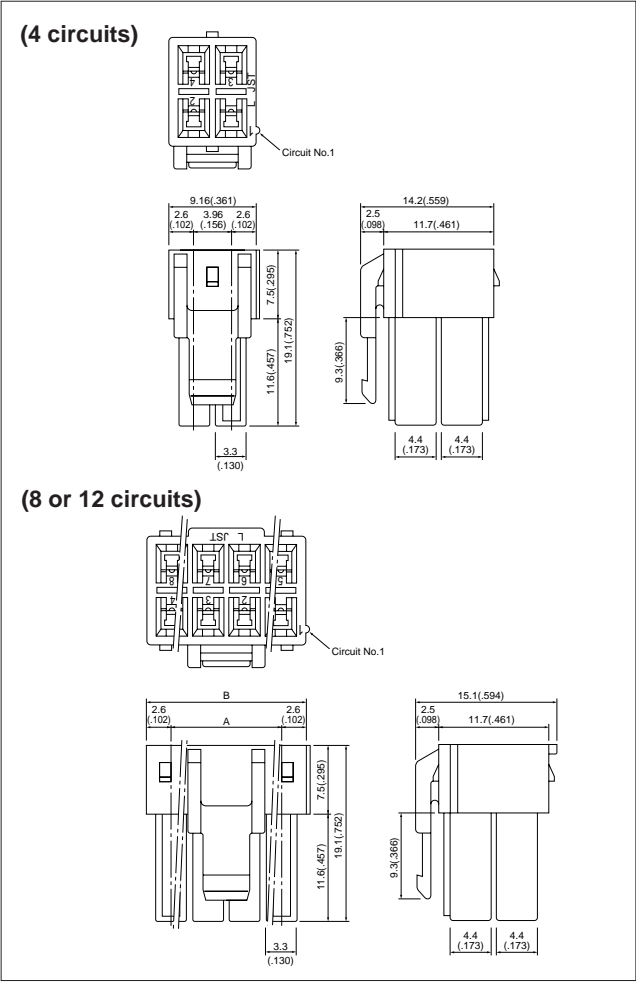
HL CONNECTOR

Contact



| Model No. | Applicable wire | | | Q-ty / reel |
|-----------------------------|-----------------|----------|--------------------------|-------------|
| | mm ² | AWG # | Insulation O.D. mm(in.) | |
| SSF-21T-P1.4 | 0.3 to 0.75 | 22 to 18 | 1.5 to 2.2(.059 to .087) | 6,000 |
| Material and Finish | | | | |
| Phosphor bronze, tin-plated | | | | |

Housing

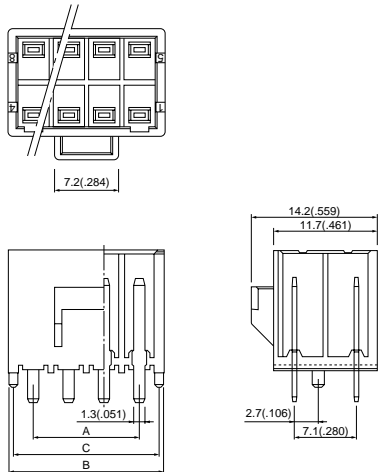


| Circuits | Model No. | Dimensions mm(in.) | | Q'ty / bag |
|------------------------------------|-----------|--------------------|-------------|------------|
| | | A | B | |
| 4 | HLP-04V | — | — | 500 |
| 8 | HLP-08V | 11.88(.468) | 17.08(.672) | 500 |
| 12 | HLP-12V | 19.8 (.780) | 25.0(.984) | 200 |
| Material | | | | |
| Nylon 66, UL94V-0, natural (white) | | | | |

HL CONNECTOR

Locking header

(4, 8 or 12 circuits)

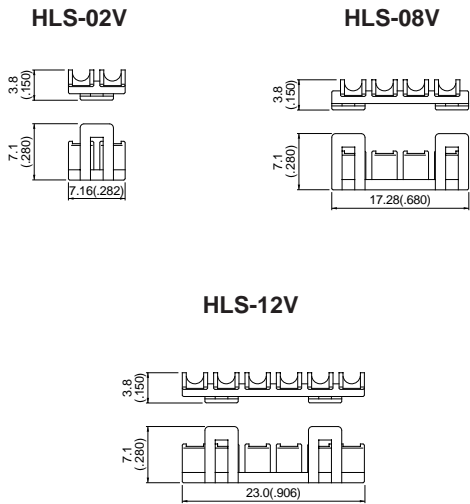


| Cir- cuits | Model No. | Dimensions mm(in.) | | | Q'ty / box |
|---------------|------------------|--------------------|--------------|--------------|---------------|
| | | A | B | C | |
| 4 | B04P-HL-A | 3.96(.156) | 9.56(.376) | 8.46(.333) | 200 |
| 8 | B08P-HL-A | 11.88(.468) | 17.48(.688) | 16.38(.645) | 100 |
| 12 | B12P-HL-A | 19.80(.780) | 25.40(1.000) | 24.30(.957) | 50 |

Material and Finish

Post: Brass, tin/lead-plated
Wafer: Nylon 66, UL94V-0, natural (white)

Retainer



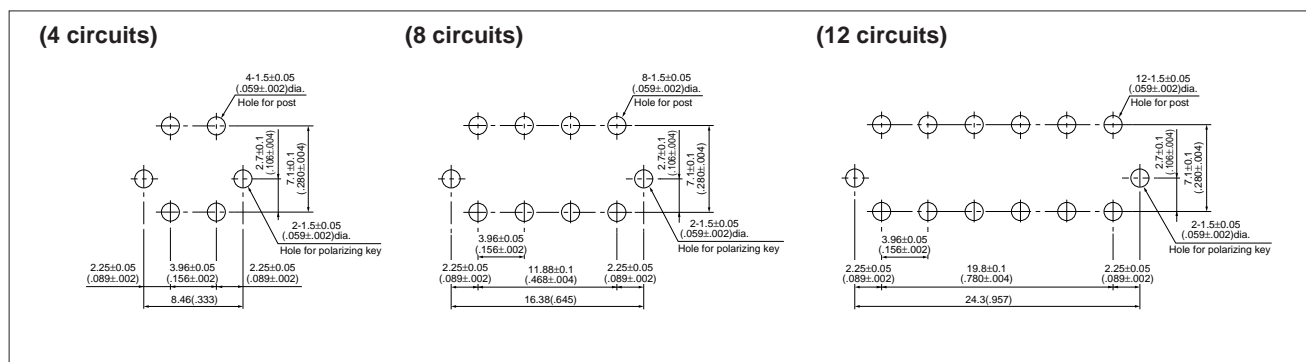
| Applicable Housing Model No. | Retainer Model No. | Q'ty / bag |
|---------------------------------|--------------------|------------|
| HLP-04V | HLS-02V | 1,000 |
| HLP-08V | HLS-08V | 1,000 |
| HLP-12V | HLS-12V | 1,000 |

Material

Glass-filled nylon 66, UL94V-0, natural (ivory)

HL CONNECTOR

PC board layout (viewed from component side)



Note:

1. Tolerances are non-cumulative: $\pm 0.05\text{mm} (\pm .002")$ for all centers.

2. Hole dimensions differ according to the kind of PC board and piercing method. The dimensions above should serve as a guideline. Contact JST for details.

Contact position location numbers

