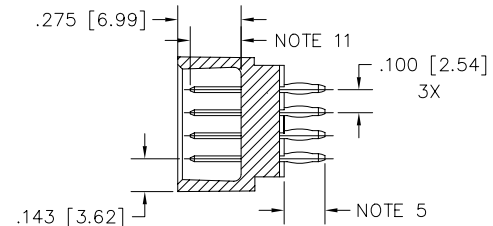
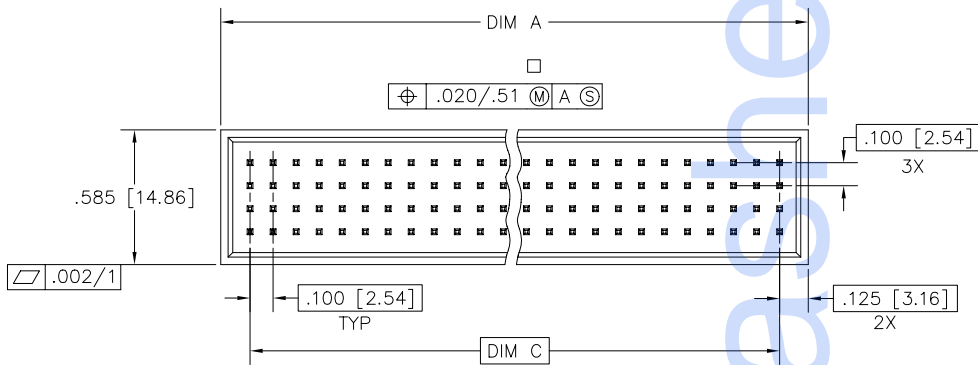
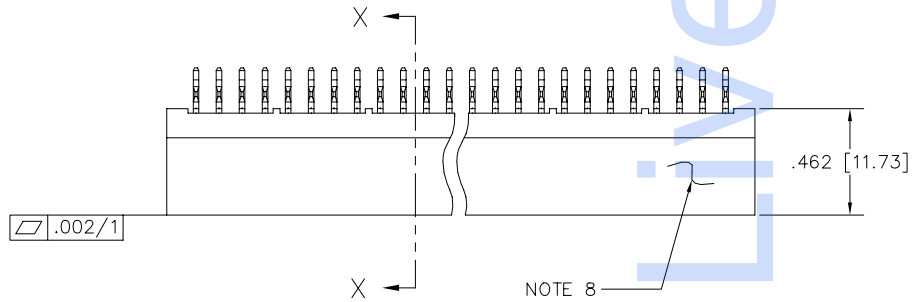


PRODUCT NUMBER
SEE NOTE 2



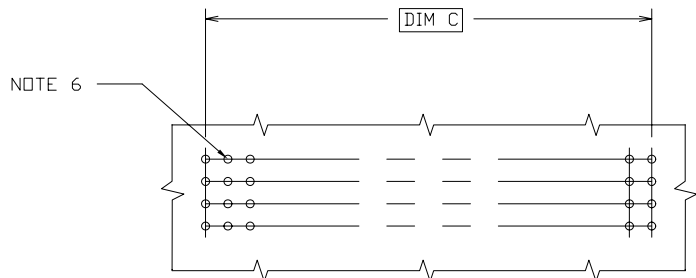
SECTION X-X

mat'l. code NOTE 3		surface ISO 1302 ✓		tolerance ISO 406 ISO 1101		projection INCH/MM		product family HPC	
tolerances unless otherwise specified		angles		linear		scale 1:1		title	
A	v11962	RDS	8/02/91		.xx ±.01/.3			4 ROW VERTICAL HEADER	
B	v12628	RDS	8/02/91		.xxx ±.005/.13			CARD CONN STYLE, PRESS FIT	
C	v30263	JM	2/22/93	σ±2'	.xxxx ±.0020/.051			dwg no	
D	v90651	HTB	4/08/99	dr	S. SHEAFFER	1/16/91		sheet 1 of 2 size	
E	v00278	JWS	2/04/00	engr	S. CLARK	8/02/91		50355 A3	
F	M06-0261	MNR	7/10/06	chr	S. CLARK	8/02/91		type Product Customer Drawing	
		appd	S. CLARK	8/02/91					
sheet index	revision sheet	F	F						
		1	2						

PRODUCT NUMBER	DIM	LENGTH FORMULAS
SEE NOTE 2	DIM A	.100/2.54 X NO. OF COLUMNS + .15/3.8
	DIM C	.100/2.54 X NO. OF COLUMNS - .100/2.54

NOTES:

- THIS PRODUCT IS CONFIGURED IN SIZES OF 10 THRU 50 COLUMNS IN INCREMENTS OF ONE.
IE: 10,11,12,13,.....49,50.
- PRODUCT DESCRIPTION CODE:
50355 - X YYY Z
 - BASE NUMBER
 - PLATING (NOTE 4)
 - NO OF POSITIONS
 - TAIL LENGTH (NOTE 5)
- HOUSING MAT'L: GLASS AND MINERAL FILLED HIGH TEMP. THERMOPLASTIC. FLAME RETARDANT PER UL94V-0. COLOR: BLACK.
PIN MAT'L: PHOS BRONZE
- PLATING, CONTACT AREA OPTIONS:
1 = 30u"/.76u GOLD
3 = 50u"/1.27u GOLD
5 = 30u"/.76U GXT
- TAIL LENGTH OPTIONS:
A = .177/4.5 P = .470/11.94 .062 PCB/SHROUD
C = .533/13.54 L = .177/4.50 .062 PCB
D = .733/18.62
G = .250/6.35
- ø.0453/1.151 DRILLED HOLE PLATED WITH .0003/0.07 MIN SnPb OVER .001/.03 TO .003/.08 Cu. PLATING TO ACHIEVE A ø.040±.003/1.02±.08 HOLE.
- TO ASSURE PROPER INSTALLATION; MANUFACTURER'S TOOLING AS SPECIFIED IN INSTRUCTION MANUAL 155915-001, MUST BE USED. PIN MATING LENGTH WILL BE ±.002/.05 AFTER INSTALLATION.
- MANUFACTURER'S NAME AND P/N, AND LOT CODE TO APPEAR ON THIS SURFACE PER BUS-12-108.
- FOR DOCUMENTATION MENU, SEE SPECIFICATION BUS-01-057.
- FOR PRODUCT PERFORMANCE SEE PRODUCT SPECIFICATION NUMBER BUS-12-090.
- STANDARD MATING LENGTH IS .22/5.6. OTHER COMMON LENGTHS AVAILABLE ARE .18/4.6 AND .26/6.6. FIRST-MATE/LAST-BREAK APPLICATIONS CAN BE DEVELOPED BY SELECTIVELY LOADING THESE VARYING MATING LENGTHS - SEE DRAWING P/N 50145. CUSTOM MATING LENGTHS ARE AVAILABLE. CONTACT YOUR CUSTOMER SERVICE REPRESENTATIVE FOR INFORMATION.



RECOMMENDED PCB LAYOUT
ALL HOLES LOCATED ON .100/2.54 GRID
UNLESS OTHERWISE SPECIFIED

mat'l. code		surface ISO 1302 ✓		tolerance ISO 406 ISO 1101		projection ⊕		product family HPC	
ltr	ecn	no	dr	date		tolerances unless otherwise specified		title	
F						angles	linear	4 ROW VERTICAL HEADER	
						σ±2'		CARD CONN STYLE, PRESS FIT	
						dr	S. SHEAFFER	1/16/91	dwg no
						enfr	S. CLARK	8/02/91	sheet 2 of 2
						chr	S. CLARK	8/02/91	size
						appd	S. CLARK	8/02/91	A3
sheet index		revision sheet						type Product Customer Drawing	



Copyright FCI