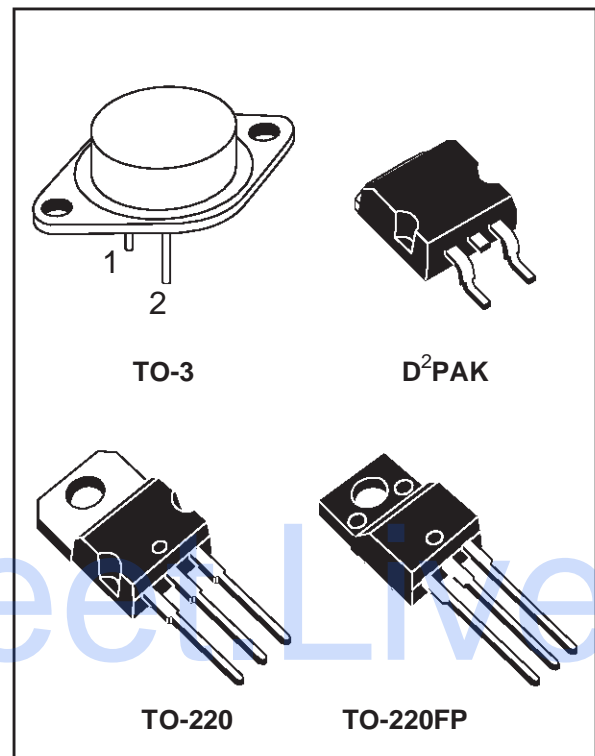


## POSITIVE VOLTAGE REGULATORS

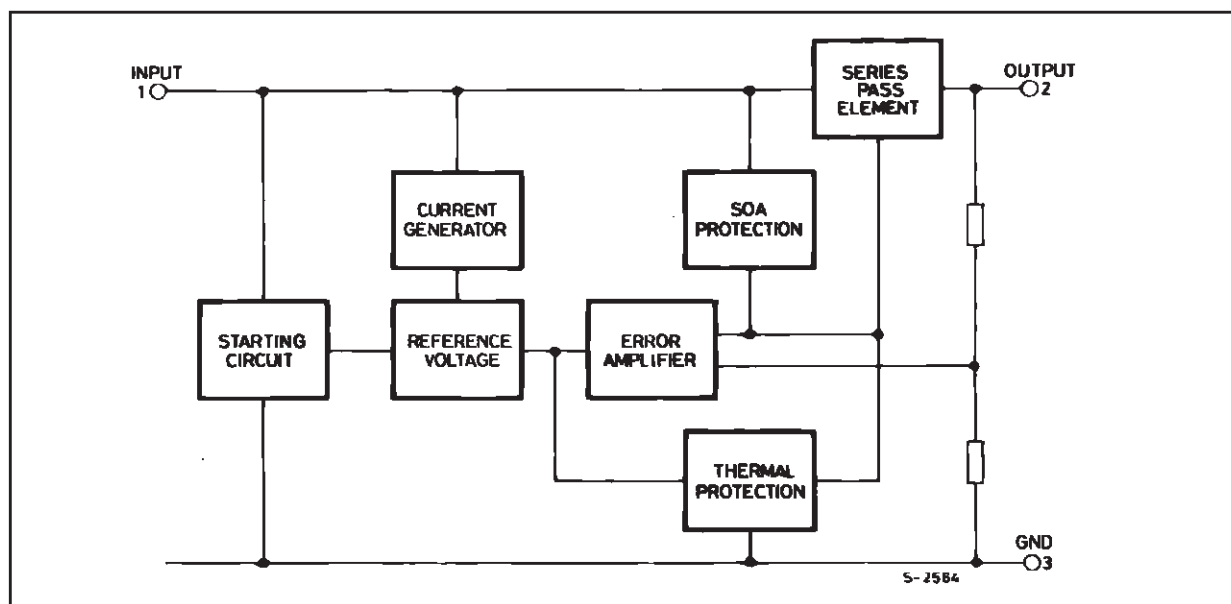
- OUTPUT CURRENT UP TO 1.5 A
- OUTPUT VOLTAGES OF 5; 5.2; 6; 8; 8.5; 9; 12; 15; 18; 24V
- THERMAL OVERLOAD PROTECTION
- SHORT CIRCUIT PROTECTION
- OUTPUT TRANSITION SOA PROTECTION

### DESCRIPTION

The L7800 series of three-terminal positive regulators is available in TO-220 TO-220FP TO-3 and D<sup>2</sup>PAK packages and several fixed output voltages, making it useful in a wide range of applications. These regulators can provide local on-card regulation, eliminating the distribution problems associated with single point regulation. Each type employs internal current limiting, thermal shut-down and safe area protection, making it essentially indestructible. If adequate heat sinking is provided, they can deliver over 1A output current. Although designed primarily as fixed voltage regulators, these devices can be used with external components to obtain adjustable voltages and currents.



### BLOCK DIAGRAM



# L7800

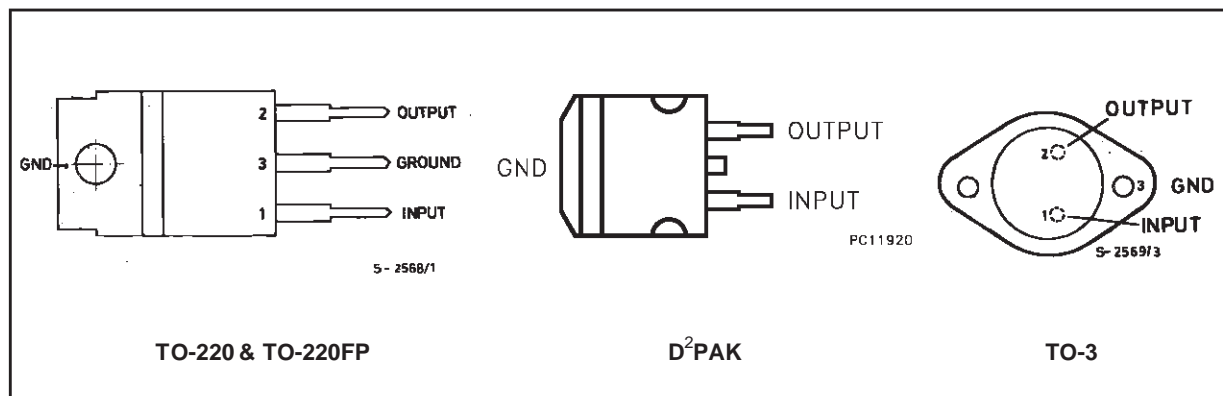
## ABSOLUTE MAXIMUM RATINGS

| Symbol    | Parameter  | Value              | Unit |
|-----------|--|--------------------|------|
| $V_i$     | DC Input Voltage (for $V_O = 5$ to 18V)<br>(for $V_O = 20, 24V$ )                | 35                 | V    |
|           |  | 40                 | V    |
| $I_o$     | Output Current   | Internally limited |      |
| $P_{tot}$ | Power Dissipation  | Internally limited |      |
| $T_{op}$  | Operating Junction Temperature Range (for <b>L7800</b> )<br>(for <b>L7800C</b> ) | -55 to 150         | °C   |
|           |  | 0 to 150           | °C   |
| $T_{stg}$ | Storage Temperature Range  | -65 to 150         | °C   |

## THERMAL DATA

| Symbol         | Parameter                           |     | D <sup>2</sup> PAK | TO-220 | TO-220FP | TO-3 | Unit |
|----------------|-------------------------------------|-----|--------------------|--------|----------|------|------|
| $R_{thj-case}$ | Thermal Resistance Junction-case    | Max | 3                  | 3      | 5        | 4    | °C/W |
| $R_{thj-amb}$  | Thermal Resistance Junction-ambient | Max | 62.5               | 50     | 60       | 35   | °C/W |

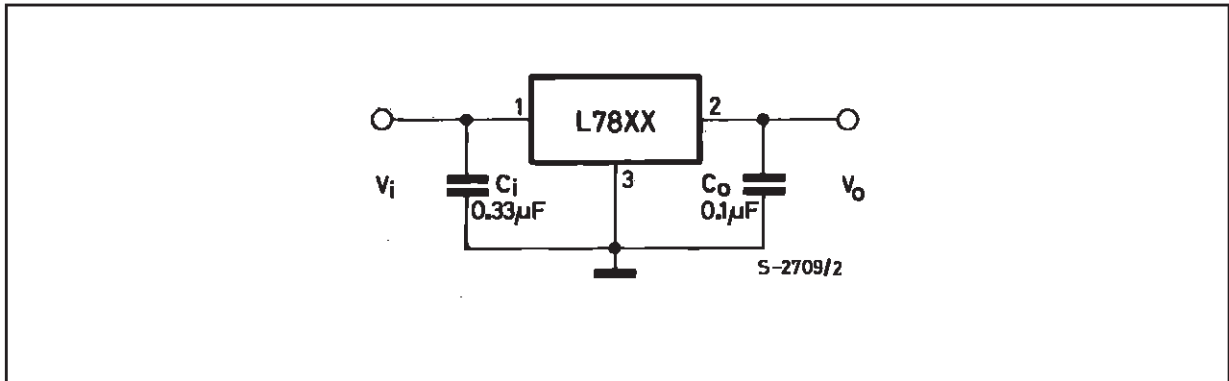
## CONNECTION DIAGRAM AND ORDERING NUMBERS (top view)



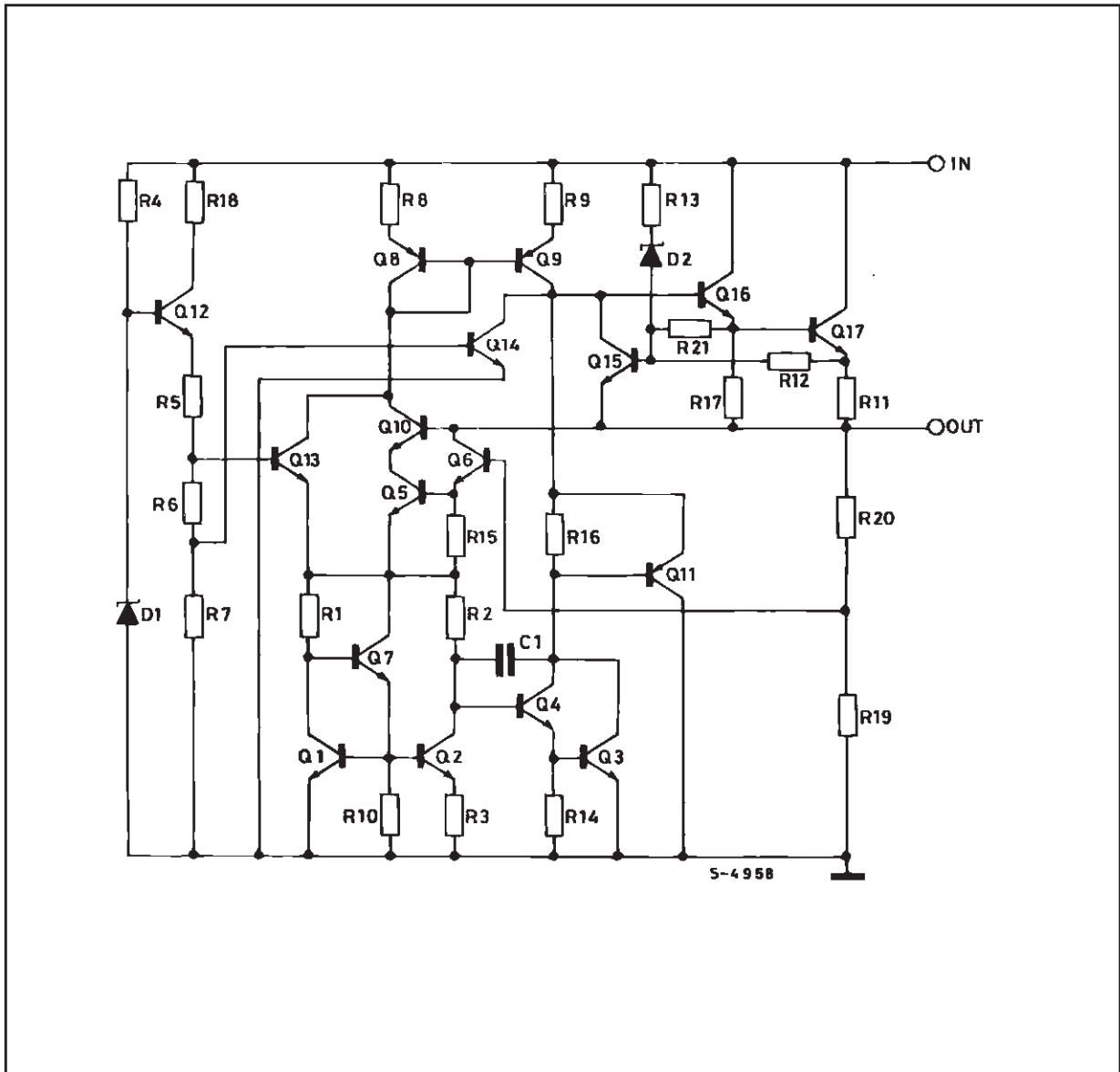
| Type   | TO-220  | D <sup>2</sup> PAK (*) | TO-220FP | TO-3    | Output Voltage |
|--------|---------|------------------------|----------|---------|----------------|
| L7805  |         |                        |          | L7805T  | 5V             |
| L7805C | L7805CV | L7805CD2T              | L7805CP  | L7805CT | 5V             |
| L7852C | L7852CV | L7852CD2T              | L7852CP  | L7852CT | 5.2V           |
| L7806  |         |                        |          | L7806T  | 6V             |
| L7806C | L7806CV | L7806CD2T              | L7806CP  | L7806CT | 6V             |
| L7808  |         |                        |          | L7808T  | 8V             |
| L7808C | L7808CV | L7808CD2T              | L7808CP  | L7808CT | 8V             |
| L7885C | L7885CV | L7885CD2T              | L7885CP  | L7885CT | 8.5V           |
| L7809C | L7809CV | L7809CD2T              | L7809CP  | L7809CT | 9V             |
| L7812  |         |                        |          | L7812T  | 12V            |
| L7812C | L7812CV | L7812CD2T              | L7812CP  | L7812CT | 12V            |
| L7815  |         |                        |          | L7815T  | 15V            |
| L7815C | L7815CV | L7815CD2T              | L7815CP  | L7815CT | 15V            |
| L7818  |         |                        |          | L7818T  | 18V            |
| L7818C | L7818CV | L7818CD2T              | L7818CP  | L7818CT | 18V            |
| L7820  |         |                        |          | L7820T  | 20V            |
| L7820C | L7820CV | L7820CD2T              | L7820CP  | L7820CT | 20V            |
| L7824  |         |                        |          | L7824T  | 24V            |
| L7824C | L7824CV | L7824CD2T              | L7824CP  | L7824CT | 24V            |

(\*) AVAILABLE IN TAPE AND REEL WITH "TR" SUFFIX

## APPLICATION CIRCUIT



## SCHEMATIC DIAGRAM



TEST CIRCUITS

Figure 1 : DC Parameter

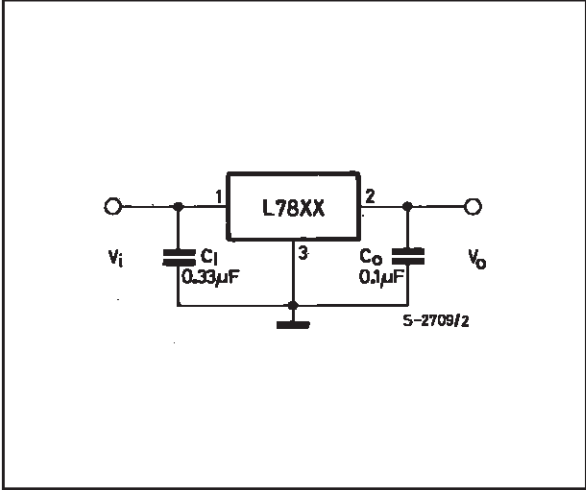


Figure 2 : Load Regulation.

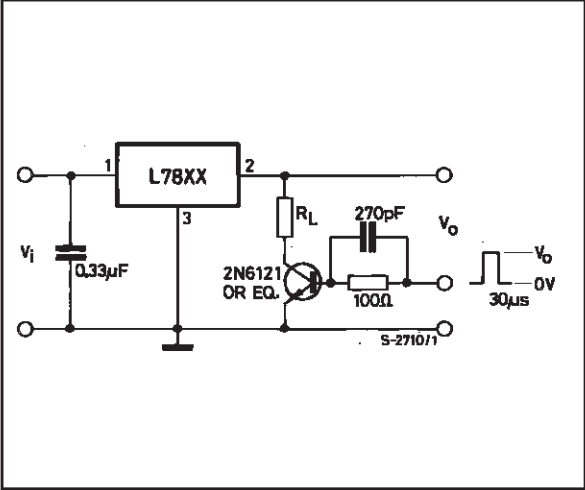
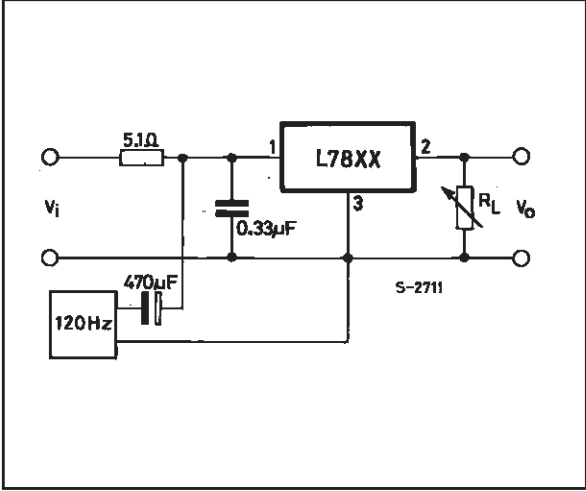


Figure 3 : Ripple Rejection.



**ELECTRICAL CHARACTERISTICS FOR L7805** (refer to the test circuits,  $T_j = -55$  to  $150$  °C,  $V_i = 10$  V,  $I_o = 500$  mA,  $C_i = 0.33$   $\mu$ F,  $C_o = 0.1$   $\mu$ F unless otherwise specified)

| Symbol                        | Parameter                  | Test Conditions   | Min. | Typ.   | Max.      | Unit           |
|-------------------------------|----------------------------|---|------|--------|-----------|----------------|
| $V_o$                         | Output Voltage             | $T_j = 25$ °C   | 4.8  | 5      | 5.2       | V              |
| $V_o$                         | Output Voltage             | $I_o = 5$ mA to 1 A $P_o \leq 15$ W<br>$V_i = 8$ to 20 V                  | 4.65 | 5      | 5.35      | V              |
| $\Delta V_o^*$                | Line Regulation            | $V_i = 7$ to 25 V $T_j = 25$ °C<br>$V_i = 8$ to 12 V $T_j = 25$ °C        |      | 3<br>1 | 50<br>25  | mV<br>mV       |
| $\Delta V_o^*$                | Load Regulation            | $I_o = 5$ to 1500 mA $T_j = 25$ °C<br>$I_o = 250$ to 750 mA $T_j = 25$ °C |      |        | 100<br>25 | mV<br>mV       |
| $I_d$                         | Quiescent Current          | $T_j = 25$ °C   |      |        | 6         | mA             |
| $\Delta I_d$                  | Quiescent Current Change   | $I_o = 5$ to 1000 mA  |      |        | 0.5       | mA             |
| $\Delta I_d$                  | Quiescent Current Change   | $V_i = 8$ to 25 V   |      |        | 0.8       | mA             |
| $\frac{\Delta V_o}{\Delta T}$ | Output Voltage Drift       | $I_o = 5$ mA  |      | 0.6    |           | mV/°C          |
| eN                            | Output Noise Voltage       | B = 10Hz to 100KHz $T_j = 25$ °C  |      |        | 40        | $\mu$ V/ $V_o$ |
| SVR                           | Supply Voltage Rejection   | $V_i = 8$ to 18 V $f = 120$ Hz  | 68   |        |           | dB             |
| $V_d$                         | Dropout Voltage            | $I_o = 1$ A $T_j = 25$ °C   |      | 2      | 2.5       | V              |
| $R_o$                         | Output Resistance          | $f = 1$ KHz   |      | 17     |           | m $\Omega$     |
| $I_{sc}$                      | Short Circuit Current      | $V_i = 35$ V $T_j = 25$ °C  |      | 0.75   | 1.2       | A              |
| $I_{scp}$                     | Short Circuit Peak Current | $T_j = 25$ °C   | 1.3  | 2.2    | 3.3       | A              |

**ELECTRICAL CHARACTERISTICS FOR L7806** (refer to the test circuits,  $T_j = -55$  to  $150$  °C,  $V_i = 15$  V,  $I_o = 500$  mA,  $C_i = 0.33$   $\mu$ F,  $C_o = 0.1$   $\mu$ F unless otherwise specified)

| Symbol                        | Parameter                  | Test Conditions   | Min. | Typ. | Max.      | Unit           |
|-------------------------------|----------------------------|---|------|------|-----------|----------------|
| $V_o$                         | Output Voltage             | $T_j = 25$ °C   | 5.75 | 6    | 6.25      | V              |
| $V_o$                         | Output Voltage             | $I_o = 5$ mA to 1 A $P_o \leq 15$ W<br>$V_i = 9$ to 21 V                  | 5.65 | 6    | 6.35      | V              |
| $\Delta V_o^*$                | Line Regulation            | $V_i = 8$ to 25 V $T_j = 25$ °C<br>$V_i = 9$ to 13 V $T_j = 25$ °C        |      |      | 60<br>30  | mV<br>mV       |
| $\Delta V_o^*$                | Load Regulation            | $I_o = 5$ to 1500 mA $T_j = 25$ °C<br>$I_o = 250$ to 750 mA $T_j = 25$ °C |      |      | 100<br>30 | mV<br>mV       |
| $I_d$                         | Quiescent Current          | $T_j = 25$ °C   |      |      | 6         | mA             |
| $\Delta I_d$                  | Quiescent Current Change   | $I_o = 5$ to 1000 mA  |      |      | 0.5       | mA             |
| $\Delta I_d$                  | Quiescent Current Change   | $V_i = 9$ to 25 V   |      |      | 0.8       | mA             |
| $\frac{\Delta V_o}{\Delta T}$ | Output Voltage Drift       | $I_o = 5$ mA  |      | 0.7  |           | mV/°C          |
| eN                            | Output Noise Voltage       | B = 10Hz to 100KHz $T_j = 25$ °C  |      |      | 40        | $\mu$ V/ $V_o$ |
| SVR                           | Supply Voltage Rejection   | $V_i = 9$ to 19 V $f = 120$ Hz  | 65   |      |           | dB             |
| $V_d$                         | Dropout Voltage            | $I_o = 1$ A $T_j = 25$ °C   |      | 2    | 2.5       | V              |
| $R_o$                         | Output Resistance          | $f = 1$ KHz   |      | 19   |           | m $\Omega$     |
| $I_{sc}$                      | Short Circuit Current      | $V_i = 35$ V $T_j = 25$ °C  |      | 0.75 | 1.2       | A              |
| $I_{scp}$                     | Short Circuit Peak Current | $T_j = 25$ °C   | 1.3  | 2.2  | 3.3       | A              |

\* Load and line regulation are specified at constant junction temperature. Changes in  $V_o$  due to heating effects must be taken into account separately. Pulse testing with low duty cycle is used.

**ELECTRICAL CHARACTERISTICS FOR L7808** (refer to the test circuits,  $T_j = -55$  to  $150$  °C,  $V_i = 14$  V,  $I_o = 500$  mA,  $C_i = 0.33$   $\mu$ F,  $C_o = 0.1$   $\mu$ F unless otherwise specified)

| Symbol                        | Parameter                  | Test Conditions   | Min. | Typ. | Max.      | Unit           |
|-------------------------------|----------------------------|---|------|------|-----------|----------------|
| $V_o$                         | Output Voltage             | $T_j = 25$ °C   | 7.7  | 8    | 8.3       | V              |
| $V_o$                         | Output Voltage             | $I_o = 5$ mA to 1 A $P_o \leq 15$ W<br>$V_i = 11.5$ to 23 V               | 7.6  | 8    | 8.4       | V              |
| $\Delta V_o^*$                | Line Regulation            | $V_i = 10.5$ to 25 V $T_j = 25$ °C<br>$V_i = 11$ to 17 V $T_j = 25$ °C    |      |      | 80<br>40  | mV<br>mV       |
| $\Delta V_o^*$                | Load Regulation            | $I_o = 5$ to 1500 mA $T_j = 25$ °C<br>$I_o = 250$ to 750 mA $T_j = 25$ °C |      |      | 100<br>40 | mV<br>mV       |
| $I_d$                         | Quiescent Current          | $T_j = 25$ °C   |      |      | 6         | mA             |
| $\Delta I_d$                  | Quiescent Current Change   | $I_o = 5$ to 1000 mA  |      |      | 0.5       | mA             |
| $\Delta I_d$                  | Quiescent Current Change   | $V_i = 11.5$ to 25 V  |      |      | 0.8       | mA             |
| $\frac{\Delta V_o}{\Delta T}$ | Output Voltage Drift       | $I_o = 5$ mA  |      | 1    |           | mV/°C          |
| eN                            | Output Noise Voltage       | B = 10Hz to 100KHz $T_j = 25$ °C  |      |      | 40        | $\mu$ V/ $V_o$ |
| SVR                           | Supply Voltage Rejection   | $V_i = 11.5$ to 21.5 V $f = 120$ Hz                                       | 62   |      |           | dB             |
| $V_d$                         | Dropout Voltage            | $I_o = 1$ A $T_j = 25$ °C   |      | 2    | 2.5       | V              |
| $R_o$                         | Output Resistance          | $f = 1$ KHz   |      | 16   |           | m $\Omega$     |
| $I_{sc}$                      | Short Circuit Current      | $V_i = 35$ V $T_j = 25$ °C  |      | 0.75 | 1.2       | A              |
| $I_{scp}$                     | Short Circuit Peak Current | $T_j = 25$ °C   | 1.3  | 2.2  | 3.3       | A              |

**ELECTRICAL CHARACTERISTICS FOR L7812** (refer to the test circuits,  $T_j = -55$  to  $150$  °C,  $V_i = 19$  V,  $I_o = 500$  mA,  $C_i = 0.33$   $\mu$ F,  $C_o = 0.1$   $\mu$ F unless otherwise specified)

| Symbol                        | Parameter                  | Test Conditions   | Min. | Typ. | Max.      | Unit           |
|-------------------------------|----------------------------|---|------|------|-----------|----------------|
| $V_o$                         | Output Voltage             | $T_j = 25$ °C   | 11.5 | 12   | 12.5      | V              |
| $V_o$                         | Output Voltage             | $I_o = 5$ mA to 1 A $P_o \leq 15$ W<br>$V_i = 15.5$ to 27 V               | 11.4 | 12   | 12.6      | V              |
| $\Delta V_o^*$                | Line Regulation            | $V_i = 14.5$ to 30 V $T_j = 25$ °C<br>$V_i = 16$ to 22 V $T_j = 25$ °C    |      |      | 120<br>60 | mV<br>mV       |
| $\Delta V_o^*$                | Load Regulation            | $I_o = 5$ to 1500 mA $T_j = 25$ °C<br>$I_o = 250$ to 750 mA $T_j = 25$ °C |      |      | 100<br>60 | mV<br>mV       |
| $I_d$                         | Quiescent Current          | $T_j = 25$ °C   |      |      | 6         | mA             |
| $\Delta I_d$                  | Quiescent Current Change   | $I_o = 5$ to 1000 mA  |      |      | 0.5       | mA             |
| $\Delta I_d$                  | Quiescent Current Change   | $V_i = 15$ to 30 V  |      |      | 0.8       | mA             |
| $\frac{\Delta V_o}{\Delta T}$ | Output Voltage Drift       | $I_o = 5$ mA  |      | 1.5  |           | mV/°C          |
| eN                            | Output Noise Voltage       | B = 10Hz to 100KHz $T_j = 25$ °C  |      |      | 40        | $\mu$ V/ $V_o$ |
| SVR                           | Supply Voltage Rejection   | $V_i = 15$ to 25 V $f = 120$ Hz   | 61   |      |           | dB             |
| $V_d$                         | Dropout Voltage            | $I_o = 1$ A $T_j = 25$ °C   |      | 2    | 2.5       | V              |
| $R_o$                         | Output Resistance          | $f = 1$ KHz   |      | 18   |           | m $\Omega$     |
| $I_{sc}$                      | Short Circuit Current      | $V_i = 35$ V $T_j = 25$ °C  |      | 0.75 | 1.2       | A              |
| $I_{scp}$                     | Short Circuit Peak Current | $T_j = 25$ °C   | 1.3  | 2.2  | 3.3       | A              |

\* Load and line regulation are specified at constant junction temperature. Changes in  $V_o$  due to heating effects must be taken into account separately. Pulse testing with low duty cycle is used.

**ELECTRICAL CHARACTERISTICS FOR L7815** (refer to the test circuits,  $T_j = -55$  to  $150$  °C,  $V_i = 23$ V,  $I_o = 500$  mA,  $C_i = 0.33$   $\mu$ F,  $C_o = 0.1$   $\mu$ F unless otherwise specified)

| Symbol                        | Parameter                  | Test Conditions   | Min.  | Typ. | Max.      | Unit           |
|-------------------------------|----------------------------|---|-------|------|-----------|----------------|
| $V_o$                         | Output Voltage             | $T_j = 25$ °C   | 14.4  | 15   | 15.6      | V              |
| $V_o$                         | Output Voltage             | $I_o = 5$ mA to $1$ A $P_o \leq 15$ W<br>$V_i = 18.5$ to $30$ V               | 14.25 | 15   | 15.75     | V              |
| $\Delta V_o^*$                | Line Regulation            | $V_i = 17.5$ to $30$ V $T_j = 25$ °C<br>$V_i = 20$ to $26$ V $T_j = 25$ °C    |       |      | 150<br>75 | mV<br>mV       |
| $\Delta V_o^*$                | Load Regulation            | $I_o = 5$ to $1500$ mA $T_j = 25$ °C<br>$I_o = 250$ to $750$ mA $T_j = 25$ °C |       |      | 150<br>75 | mV<br>mV       |
| $I_d$                         | Quiescent Current          | $T_j = 25$ °C   |       |      | 6         | mA             |
| $\Delta I_d$                  | Quiescent Current Change   | $I_o = 5$ to $1000$ mA  |       |      | 0.5       | mA             |
| $\Delta I_d$                  | Quiescent Current Change   | $V_i = 18.5$ to $30$ V  |       |      | 0.8       | mA             |
| $\frac{\Delta V_o}{\Delta T}$ | Output Voltage Drift       | $I_o = 5$ mA  |       | 1.8  |           | mV/°C          |
| eN                            | Output Noise Voltage       | $B = 10$ Hz to $100$ KHz $T_j = 25$ °C  |       |      | 40        | $\mu$ V/ $V_o$ |
| SVR                           | Supply Voltage Rejection   | $V_i = 18.5$ to $28.5$ V $f = 120$ Hz   | 60    |      |           | dB             |
| $V_d$                         | Dropout Voltage            | $I_o = 1$ A $T_j = 25$ °C   |       | 2    | 2.5       | V              |
| $R_o$                         | Output Resistance          | $f = 1$ KHz   |       | 19   |           | m $\Omega$     |
| $I_{sc}$                      | Short Circuit Current      | $V_i = 35$ V $T_j = 25$ °C  |       | 0.75 | 1.2       | A              |
| $I_{scp}$                     | Short Circuit Peak Current | $T_j = 25$ °C   | 1.3   | 2.2  | 3.3       | A              |

**ELECTRICAL CHARACTERISTICS FOR L7818** (refer to the test circuits,  $T_j = -55$  to  $150$  °C,  $V_i = 26$ V,  $I_o = 500$  mA,  $C_i = 0.33$   $\mu$ F,  $C_o = 0.1$   $\mu$ F unless otherwise specified)

| Symbol                        | Parameter                  | Test Conditions   | Min. | Typ. | Max.      | Unit           |
|-------------------------------|----------------------------|---|------|------|-----------|----------------|
| $V_o$                         | Output Voltage             | $T_j = 25$ °C   | 17.3 | 18   | 18.7      | V              |
| $V_o$                         | Output Voltage             | $I_o = 5$ mA to $1$ A $P_o \leq 15$ W<br>$V_i = 22$ to $33$ V                 | 17.1 | 18   | 18.9      | V              |
| $\Delta V_o^*$                | Line Regulation            | $V_i = 21$ to $33$ V $T_j = 25$ °C<br>$V_i = 24$ to $30$ V $T_j = 25$ °C      |      |      | 180<br>90 | mV<br>mV       |
| $\Delta V_o^*$                | Load Regulation            | $I_o = 5$ to $1500$ mA $T_j = 25$ °C<br>$I_o = 250$ to $750$ mA $T_j = 25$ °C |      |      | 180<br>90 | mV<br>mV       |
| $I_d$                         | Quiescent Current          | $T_j = 25$ °C   |      |      | 6         | mA             |
| $\Delta I_d$                  | Quiescent Current Change   | $I_o = 5$ to $1000$ mA  |      |      | 0.5       | mA             |
| $\Delta I_d$                  | Quiescent Current Change   | $V_i = 22$ to $33$ V  |      |      | 0.8       | mA             |
| $\frac{\Delta V_o}{\Delta T}$ | Output Voltage Drift       | $I_o = 5$ mA  |      | 2.3  |           | mV/°C          |
| eN                            | Output Noise Voltage       | $B = 10$ Hz to $100$ KHz $T_j = 25$ °C  |      |      | 40        | $\mu$ V/ $V_o$ |
| SVR                           | Supply Voltage Rejection   | $V_i = 22$ to $32$ V $f = 120$ Hz   | 59   |      |           | dB             |
| $V_d$                         | Dropout Voltage            | $I_o = 1$ A $T_j = 25$ °C   |      | 2    | 2.5       | V              |
| $R_o$                         | Output Resistance          | $f = 1$ KHz   |      | 22   |           | m $\Omega$     |
| $I_{sc}$                      | Short Circuit Current      | $V_i = 35$ V $T_j = 25$ °C  |      | 0.75 | 1.2       | A              |
| $I_{scp}$                     | Short Circuit Peak Current | $T_j = 25$ °C   | 1.3  | 2.2  | 3.3       | A              |

\* Load and line regulation are specified at constant junction temperature. Changes in  $V_o$  due to heating effects must be taken into account separately. Pulse testing with low duty cycle is used.

**ELECTRICAL CHARACTERISTICS FOR L7820** (refer to the test circuits,  $T_j = -55$  to  $150$  °C,  $V_i = 28$  V,  $I_o = 500$  mA,  $C_i = 0.33$   $\mu$ F,  $C_o = 0.1$   $\mu$ F unless otherwise specified)

| Symbol                        | Parameter                  | Test Conditions   | Min. | Typ. | Max.       | Unit           |
|-------------------------------|----------------------------|---|------|------|------------|----------------|
| $V_o$                         | Output Voltage             | $T_j = 25$ °C   | 19.2 | 20   | 20.8       | V              |
| $V_o$                         | Output Voltage             | $I_o = 5$ mA to 1 A $P_o \leq 15$ W<br>$V_i = 24$ to 35 V                 | 19   | 20   | 21         | V              |
| $\Delta V_o^*$                | Line Regulation            | $V_i = 22.5$ to 35 V $T_j = 25$ °C<br>$V_i = 26$ to 32 V $T_j = 25$ °C    |      |      | 200<br>100 | mV<br>mV       |
| $\Delta V_o^*$                | Load Regulation            | $I_o = 5$ to 1500 mA $T_j = 25$ °C<br>$I_o = 250$ to 750 mA $T_j = 25$ °C |      |      | 200<br>100 | mV<br>mV       |
| $I_d$                         | Quiescent Current          | $T_j = 25$ °C   |      |      | 6          | mA             |
| $\Delta I_d$                  | Quiescent Current Change   | $I_o = 5$ to 1000 mA  |      |      | 0.5        | mA             |
| $\Delta I_d$                  | Quiescent Current Change   | $V_i = 24$ to 35 V  |      |      | 0.8        | mA             |
| $\frac{\Delta V_o}{\Delta T}$ | Output Voltage Drift       | $I_o = 5$ mA  |      | 2.5  |            | mV/°C          |
| eN                            | Output Noise Voltage       | B = 10Hz to 100KHz $T_j = 25$ °C  |      |      | 40         | $\mu$ V/ $V_o$ |
| SVR                           | Supply Voltage Rejection   | $V_i = 24$ to 35 V $f = 120$ Hz   | 58   |      |            | dB             |
| $V_d$                         | Dropout Voltage            | $I_o = 1$ A $T_j = 25$ °C   |      | 2    | 2.5        | V              |
| $R_o$                         | Output Resistance          | $f = 1$ KHz   |      | 24   |            | m $\Omega$     |
| $I_{sc}$                      | Short Circuit Current      | $V_i = 35$ V $T_j = 25$ °C  |      | 0.75 | 1.2        | A              |
| $I_{scp}$                     | Short Circuit Peak Current | $T_j = 25$ °C   | 1.3  | 2.2  | 3.3        | A              |

**ELECTRICAL CHARACTERISTICS FOR L7824** (refer to the test circuits,  $T_j = -55$  to  $150$  °C,  $V_i = 33$  V,  $I_o = 500$  mA,  $C_i = 0.33$   $\mu$ F,  $C_o = 0.1$   $\mu$ F unless otherwise specified)

| Symbol                        | Parameter                  | Test Conditions   | Min. | Typ. | Max.       | Unit           |
|-------------------------------|----------------------------|---|------|------|------------|----------------|
| $V_o$                         | Output Voltage             | $T_j = 25$ °C   | 23   | 24   | 25         | V              |
| $V_o$                         | Output Voltage             | $I_o = 5$ mA to 1 A $P_o \leq 15$ W<br>$V_i = 28$ to 38 V                 | 22.8 | 24   | 25.2       | V              |
| $\Delta V_o^*$                | Line Regulation            | $V_i = 27$ to 38 V $T_j = 25$ °C<br>$V_i = 30$ to 36 V $T_j = 25$ °C      |      |      | 240<br>120 | mV<br>mV       |
| $\Delta V_o^*$                | Load Regulation            | $I_o = 5$ to 1500 mA $T_j = 25$ °C<br>$I_o = 250$ to 750 mA $T_j = 25$ °C |      |      | 240<br>120 | mV<br>mV       |
| $I_d$                         | Quiescent Current          | $T_j = 25$ °C   |      |      | 6          | mA             |
| $\Delta I_d$                  | Quiescent Current Change   | $I_o = 5$ to 1000 mA  |      |      | 0.5        | mA             |
| $\Delta I_d$                  | Quiescent Current Change   | $V_i = 28$ to 38 V  |      |      | 0.8        | mA             |
| $\frac{\Delta V_o}{\Delta T}$ | Output Voltage Drift       | $I_o = 5$ mA  |      | 3    |            | mV/°C          |
| eN                            | Output Noise Voltage       | B = 10Hz to 100KHz $T_j = 25$ °C  |      |      | 40         | $\mu$ V/ $V_o$ |
| SVR                           | Supply Voltage Rejection   | $V_i = 28$ to 38 V $f = 120$ Hz   | 56   |      |            | dB             |
| $V_d$                         | Dropout Voltage            | $I_o = 1$ A $T_j = 25$ °C   |      | 2    | 2.5        | V              |
| $R_o$                         | Output Resistance          | $f = 1$ KHz   |      | 28   |            | m $\Omega$     |
| $I_{sc}$                      | Short Circuit Current      | $V_i = 35$ V $T_j = 25$ °C  |      | 0.75 | 1.2        | A              |
| $I_{scp}$                     | Short Circuit Peak Current | $T_j = 25$ °C   | 1.3  | 2.2  | 3.3        | A              |

\* Load and line regulation are specified at constant junction temperature. Changes in  $V_o$  due to heating effects must be taken into account separately. Pulse testing with low duty cycle is used.



**ELECTRICAL CHARACTERISTICS FOR L7805C** (refer to the test circuits,  $T_j = 0$  to  $125$  °C,  $V_i = 10$  V,  $I_o = 500$  mA,  $C_i = 0.33$   $\mu$ F,  $C_o = 0.1$   $\mu$ F unless otherwise specified)

| Symbol                        | Parameter                  | Test Conditions   | Min. | Typ.   | Max.      | Unit       |
|-------------------------------|----------------------------|---|------|--------|-----------|------------|
| $V_o$                         | Output Voltage             | $T_j = 25$ °C   | 4.8  | 5      | 5.2       | V          |
| $V_o$                         | Output Voltage             | $I_o = 5$ mA to $1$ A $P_o \leq 15$ W<br>$V_i = 7$ to $20$ V                  | 4.75 | 5      | 5.25      | V          |
| $\Delta V_o^*$                | Line Regulation            | $V_i = 7$ to $25$ V $T_j = 25$ °C<br>$V_i = 8$ to $12$ V $T_j = 25$ °C        |      | 3<br>1 | 100<br>50 | mV<br>mV   |
| $\Delta V_o^*$                | Load Regulation            | $I_o = 5$ to $1500$ mA $T_j = 25$ °C<br>$I_o = 250$ to $750$ mA $T_j = 25$ °C |      |        | 100<br>50 | mV<br>mV   |
| $I_d$                         | Quiescent Current          | $T_j = 25$ °C   |      |        | 8         | mA         |
| $\Delta I_d$                  | Quiescent Current Change   | $I_o = 5$ to $1000$ mA  |      |        | 0.5       | mA         |
| $\Delta I_d$                  | Quiescent Current Change   | $V_i = 7$ to $25$ V   |      |        | 0.8       | mA         |
| $\frac{\Delta V_o}{\Delta T}$ | Output Voltage Drift       | $I_o = 5$ mA  |      | -1.1   |           | mV/°C      |
| eN                            | Output Noise Voltage       | $B = 10$ Hz to $100$ KHz $T_j = 25$ °C  |      | 40     |           | $\mu$ V    |
| SVR                           | Supply Voltage Rejection   | $V_i = 8$ to $18$ V $f = 120$ Hz  | 62   |        |           | dB         |
| $V_d$                         | Dropout Voltage            | $I_o = 1$ A $T_j = 25$ °C   |      | 2      |           | V          |
| $R_o$                         | Output Resistance          | $f = 1$ KHz   |      | 17     |           | m $\Omega$ |
| $I_{sc}$                      | Short Circuit Current      | $V_i = 35$ V $T_j = 25$ °C  |      | 750    |           | mA         |
| $I_{scp}$                     | Short Circuit Peak Current | $T_j = 25$ °C   |      | 2.2    |           | A          |

**ELECTRICAL CHARACTERISTICS FOR L7852C** (refer to the test circuits,  $T_j = 0$  to  $125$  °C,  $V_i = 10$  V,  $I_o = 500$  mA,  $C_i = 0.33$   $\mu$ F,  $C_o = 0.1$   $\mu$ F unless otherwise specified)

| Symbol                        | Parameter                  | Test Conditions   | Min. | Typ.   | Max.      | Unit       |
|-------------------------------|----------------------------|---|------|--------|-----------|------------|
| $V_o$                         | Output Voltage             | $T_j = 25$ °C   | 5.0  | 5.2    | 5.4       | V          |
| $V_o$                         | Output Voltage             | $I_o = 5$ mA to $1$ A $P_o \leq 15$ W<br>$V_i = 8$ to $20$ V                  | 4.95 | 5.2    | 5.45      | V          |
| $\Delta V_o^*$                | Line Regulation            | $V_i = 7$ to $25$ V $T_j = 25$ °C<br>$V_i = 8$ to $12$ V $T_j = 25$ °C        |      | 3<br>1 | 105<br>52 | mV<br>mV   |
| $\Delta V_o^*$                | Load Regulation            | $I_o = 5$ to $1500$ mA $T_j = 25$ °C<br>$I_o = 250$ to $750$ mA $T_j = 25$ °C |      |        | 105<br>52 | mV<br>mV   |
| $I_d$                         | Quiescent Current          | $T_j = 25$ °C   |      |        | 8         | mA         |
| $\Delta I_d$                  | Quiescent Current Change   | $I_o = 5$ to $1000$ mA  |      |        | 0.5       | mA         |
| $\Delta I_d$                  | Quiescent Current Change   | $V_i = 7$ to $25$ V   |      |        | 1.3       | mA         |
| $\frac{\Delta V_o}{\Delta T}$ | Output Voltage Drift       | $I_o = 5$ mA  |      | -1.0   |           | mV/°C      |
| eN                            | Output Noise Voltage       | $B = 10$ Hz to $100$ KHz $T_j = 25$ °C  |      | 42     |           | $\mu$ V    |
| SVR                           | Supply Voltage Rejection   | $V_i = 8$ to $18$ V $f = 120$ Hz  | 61   |        |           | dB         |
| $V_d$                         | Dropout Voltage            | $I_o = 1$ A $T_j = 25$ °C   |      | 2      |           | V          |
| $R_o$                         | Output Resistance          | $f = 1$ KHz   |      | 17     |           | m $\Omega$ |
| $I_{sc}$                      | Short Circuit Current      | $V_i = 35$ V $T_j = 25$ °C  |      | 750    |           | mA         |
| $I_{scp}$                     | Short Circuit Peak Current | $T_j = 25$ °C   |      | 2.2    |           | A          |

\* Load and line regulation are specified at constant junction temperature. Changes in  $V_o$  due to heating effects must be taken into account separately. Pulse testing with low duty cycle is used.

**ELECTRICAL CHARACTERISTICS FOR L7806C** (refer to the test circuits,  $T_j = 0$  to  $125$  °C,  $V_i = 11$  V,  $I_o = 500$  mA,  $C_i = 0.33$   $\mu$ F,  $C_o = 0.1$   $\mu$ F unless otherwise specified)

| Symbol                        | Parameter                  | Test Conditions   | Min. | Typ. | Max.      | Unit       |
|-------------------------------|----------------------------|---|------|------|-----------|------------|
| $V_o$                         | Output Voltage             | $T_j = 25$ °C   | 5.75 | 6    | 6.25      | V          |
| $V_o$                         | Output Voltage             | $I_o = 5$ mA to 1 A $P_o \leq 15$ W<br>$V_i = 8$ to 21 V                  | 5.7  | 6    | 6.3       | V          |
| $\Delta V_o^*$                | Line Regulation            | $V_i = 8$ to 25 V $T_j = 25$ °C<br>$V_i = 9$ to 13 V $T_j = 25$ °C        |      |      | 120<br>60 | mV<br>mV   |
| $\Delta V_o^*$                | Load Regulation            | $I_o = 5$ to 1500 mA $T_j = 25$ °C<br>$I_o = 250$ to 750 mA $T_j = 25$ °C |      |      | 120<br>60 | mV<br>mV   |
| $I_d$                         | Quiescent Current          | $T_j = 25$ °C   |      |      | 8         | mA         |
| $\Delta I_d$                  | Quiescent Current Change   | $I_o = 5$ to 1000 mA  |      |      | 0.5       | mA         |
| $\Delta I_d$                  | Quiescent Current Change   | $V_i = 8$ to 25 V   |      |      | 1.3       | mA         |
| $\frac{\Delta V_o}{\Delta T}$ | Output Voltage Drift       | $I_o = 5$ mA  |      | -0.8 |           | mV/°C      |
| eN                            | Output Noise Voltage       | B = 10Hz to 100KHz $T_j = 25$ °C  |      | 45   |           | $\mu$ V    |
| SVR                           | Supply Voltage Rejection   | $V_i = 9$ to 19 V $f = 120$ Hz  | 59   |      |           | dB         |
| $V_d$                         | Dropout Voltage            | $I_o = 1$ A $T_j = 25$ °C   |      | 2    |           | V          |
| $R_o$                         | Output Resistance          | $f = 1$ KHz   |      | 19   |           | m $\Omega$ |
| $I_{sc}$                      | Short Circuit Current      | $V_i = 35$ V $T_j = 25$ °C  |      | 550  |           | mA         |
| $I_{scp}$                     | Short Circuit Peak Current | $T_j = 25$ °C   |      | 2.2  |           | A          |

**ELECTRICAL CHARACTERISTICS FOR L7808C** (refer to the test circuits,  $T_j = 0$  to  $125$  °C,  $V_i = 14$  V,  $I_o = 500$  mA,  $C_i = 0.33$   $\mu$ F,  $C_o = 0.1$   $\mu$ F unless otherwise specified)

| Symbol                        | Parameter                  | Test Conditions   | Min. | Typ. | Max.      | Unit       |
|-------------------------------|----------------------------|---|------|------|-----------|------------|
| $V_o$                         | Output Voltage             | $T_j = 25$ °C   | 7.7  | 8    | 8.3       | V          |
| $V_o$                         | Output Voltage             | $I_o = 5$ mA to 1 A $P_o \leq 15$ W<br>$V_i = 10.5$ to 25 V               | 7.6  | 8    | 8.4       | V          |
| $\Delta V_o^*$                | Line Regulation            | $V_i = 10.5$ to 25 V $T_j = 25$ °C<br>$V_i = 11$ to 17 V $T_j = 25$ °C    |      |      | 160<br>80 | mV<br>mV   |
| $\Delta V_o^*$                | Load Regulation            | $I_o = 5$ to 1500 mA $T_j = 25$ °C<br>$I_o = 250$ to 750 mA $T_j = 25$ °C |      |      | 160<br>80 | mV<br>mV   |
| $I_d$                         | Quiescent Current          | $T_j = 25$ °C   |      |      | 8         | mA         |
| $\Delta I_d$                  | Quiescent Current Change   | $I_o = 5$ to 1000 mA  |      |      | 0.5       | mA         |
| $\Delta I_d$                  | Quiescent Current Change   | $V_i = 10.5$ to 25 V  |      |      | 1         | mA         |
| $\frac{\Delta V_o}{\Delta T}$ | Output Voltage Drift       | $I_o = 5$ mA  |      | -0.8 |           | mV/°C      |
| eN                            | Output Noise Voltage       | B = 10Hz to 100KHz $T_j = 25$ °C  |      | 52   |           | $\mu$ V    |
| SVR                           | Supply Voltage Rejection   | $V_i = 11.5$ to 21.5 V $f = 120$ Hz                                       | 56   |      |           | dB         |
| $V_d$                         | Dropout Voltage            | $I_o = 1$ A $T_j = 25$ °C   |      | 2    |           | V          |
| $R_o$                         | Output Resistance          | $f = 1$ KHz   |      | 16   |           | m $\Omega$ |
| $I_{sc}$                      | Short Circuit Current      | $V_i = 35$ V $T_j = 25$ °C  |      | 450  |           | mA         |
| $I_{scp}$                     | Short Circuit Peak Current | $T_j = 25$ °C   |      | 2.2  |           | A          |

\* Load and line regulation are specified at constant junction temperature. Changes in  $V_o$  due to heating effects must be taken into account separately. Pulse testing with low duty cycle is used.

**ELECTRICAL CHARACTERISTICS FOR L7885C** (refer to the test circuits,  $T_j = 0$  to  $125$  °C,  $V_i = 14.5$  V,  $I_o = 500$  mA,  $C_i = 0.33$   $\mu$ F,  $C_o = 0.1$   $\mu$ F unless otherwise specified)

| Symbol                        | Parameter                  | Test Conditions   | Min. | Typ. | Max.      | Unit       |
|-------------------------------|----------------------------|---|------|------|-----------|------------|
| $V_o$                         | Output Voltage             | $T_j = 25$ °C   | 8.2  | 8.5  | 8.8       | V          |
| $V_o$                         | Output Voltage             | $I_o = 5$ mA to 1 A $P_o \leq 15$ W<br>$V_i = 11$ to 26 V                 | 8.1  | 8.5  | 8.9       | V          |
| $\Delta V_o^*$                | Line Regulation            | $V_i = 11$ to 27 V $T_j = 25$ °C<br>$V_i = 11.5$ to 17.5 V $T_j = 25$ °C  |      |      | 160<br>80 | mV<br>mV   |
| $\Delta V_o^*$                | Load Regulation            | $I_o = 5$ to 1500 mA $T_j = 25$ °C<br>$I_o = 250$ to 750 mA $T_j = 25$ °C |      |      | 160<br>80 | mV<br>mV   |
| $I_d$                         | Quiescent Current          | $T_j = 25$ °C   |      |      | 8         | mA         |
| $\Delta I_d$                  | Quiescent Current Change   | $I_o = 5$ to 1000 mA  |      |      | 0.5       | mA         |
| $\Delta I_d$                  | Quiescent Current Change   | $V_i = 11$ to 27 V  |      |      | 1         | mA         |
| $\frac{\Delta V_o}{\Delta T}$ | Output Voltage Drift       | $I_o = 5$ mA  |      | -0.8 |           | mV/°C      |
| eN                            | Output Noise Voltage       | B = 10Hz to 100KHz $T_j = 25$ °C  |      | 55   |           | $\mu$ V    |
| SVR                           | Supply Voltage Rejection   | $V_i = 12$ to 22 V $f = 120$ Hz   | 56   |      |           | dB         |
| $V_d$                         | Dropout Voltage            | $I_o = 1$ A $T_j = 25$ °C   |      | 2    |           | V          |
| $R_o$                         | Output Resistance          | $f = 1$ KHz   |      | 16   |           | m $\Omega$ |
| $I_{sc}$                      | Short Circuit Current      | $V_i = 35$ V $T_j = 25$ °C  |      | 450  |           | mA         |
| $I_{scp}$                     | Short Circuit Peak Current | $T_j = 25$ °C   |      | 2.2  |           | A          |

**ELECTRICAL CHARACTERISTICS FOR L7809C** (refer to the test circuits,  $T_j = 0$  to  $125$  °C,  $V_i = 15$  V,  $I_o = 500$  mA,  $C_i = 0.33$   $\mu$ F,  $C_o = 0.1$   $\mu$ F unless otherwise specified)

| Symbol                        | Parameter                  | Test Conditions   | Min. | Typ. | Max.      | Unit       |
|-------------------------------|----------------------------|---|------|------|-----------|------------|
| $V_o$                         | Output Voltage             | $T_j = 25$ °C   | 8.65 | 9    | 9.35      | V          |
| $V_o$                         | Output Voltage             | $I_o = 5$ mA to 1 A $P_o \leq 15$ W<br>$V_i = 11.5$ to 26 V               | 8.55 | 9    | 9.45      | V          |
| $\Delta V_o^*$                | Line Regulation            | $V_i = 11.5$ to 26 V $T_j = 25$ °C<br>$V_i = 12$ to 18 V $T_j = 25$ °C    |      |      | 180<br>90 | mV<br>mV   |
| $\Delta V_o^*$                | Load Regulation            | $I_o = 5$ to 1500 mA $T_j = 25$ °C<br>$I_o = 250$ to 750 mA $T_j = 25$ °C |      |      | 180<br>90 | mV<br>mV   |
| $I_d$                         | Quiescent Current          | $T_j = 25$ °C   |      |      | 8         | mA         |
| $\Delta I_d$                  | Quiescent Current Change   | $I_o = 5$ to 1000 mA  |      |      | 0.5       | mA         |
| $\Delta I_d$                  | Quiescent Current Change   | $V_i = 11.5$ to 26 V  |      |      | 1         | mA         |
| $\frac{\Delta V_o}{\Delta T}$ | Output Voltage Drift       | $I_o = 5$ mA  |      | -1.0 |           | mV/°C      |
| eN                            | Output Noise Voltage       | B = 10Hz to 100KHz $T_j = 25$ °C  |      | 70   |           | $\mu$ V    |
| SVR                           | Supply Voltage Rejection   | $V_i = 12$ to 23 V $f = 120$ Hz   | 55   |      |           | dB         |
| $V_d$                         | Dropout Voltage            | $I_o = 1$ A $T_j = 25$ °C   |      | 2    |           | V          |
| $R_o$                         | Output Resistance          | $f = 1$ KHz   |      | 17   |           | m $\Omega$ |
| $I_{sc}$                      | Short Circuit Current      | $V_i = 35$ V $T_j = 25$ °C  |      | 400  |           | mA         |
| $I_{scp}$                     | Short Circuit Peak Current | $T_j = 25$ °C   |      | 2.2  |           | A          |

\* Load and line regulation are specified at constant junction temperature. Changes in  $V_o$  due to heating effects must be taken into account separately. Pulse testing with low duty cycle is used.

**ELECTRICAL CHARACTERISTICS FOR L7812C** (refer to the test circuits,  $T_j = 0$  to  $125$  °C,  $V_i = 19$  V,  $I_o = 500$  mA,  $C_i = 0.33$   $\mu$ F,  $C_o = 0.1$   $\mu$ F unless otherwise specified)

| Symbol                        | Parameter                  | Test Conditions   | Min. | Typ. | Max.       | Unit       |
|-------------------------------|----------------------------|---|------|------|------------|------------|
| $V_o$                         | Output Voltage             | $T_j = 25$ °C   | 11.5 | 12   | 12.5       | V          |
| $V_o$                         | Output Voltage             | $I_o = 5$ mA to 1 A $P_o \leq 15$ W<br>$V_i = 14.5$ to 27 V               | 11.4 | 12   | 12.6       | V          |
| $\Delta V_o^*$                | Line Regulation            | $V_i = 14.5$ to 30 V $T_j = 25$ °C<br>$V_i = 16$ to 22 V $T_j = 25$ °C    |      |      | 240<br>120 | mV<br>mV   |
| $\Delta V_o^*$                | Load Regulation            | $I_o = 5$ to 1500 mA $T_j = 25$ °C<br>$I_o = 250$ to 750 mA $T_j = 25$ °C |      |      | 240<br>120 | mV<br>mV   |
| $I_d$                         | Quiescent Current          | $T_j = 25$ °C   |      |      | 8          | mA         |
| $\Delta I_d$                  | Quiescent Current Change   | $I_o = 5$ to 1000 mA  |      |      | 0.5        | mA         |
| $\Delta I_d$                  | Quiescent Current Change   | $V_i = 14.5$ to 30 V  |      |      | 1          | mA         |
| $\frac{\Delta V_o}{\Delta T}$ | Output Voltage Drift       | $I_o = 5$ mA  |      | -1   |            | mV/°C      |
| eN                            | Output Noise Voltage       | B = 10Hz to 100KHz $T_j = 25$ °C  |      | 75   |            | $\mu$ V    |
| SVR                           | Supply Voltage Rejection   | $V_i = 15$ to 25 V $f = 120$ Hz   | 55   |      |            | dB         |
| $V_d$                         | Dropout Voltage            | $I_o = 1$ A $T_j = 25$ °C   |      | 2    |            | V          |
| $R_o$                         | Output Resistance          | $f = 1$ KHz   |      | 18   |            | m $\Omega$ |
| $I_{sc}$                      | Short Circuit Current      | $V_i = 35$ V $T_j = 25$ °C  |      | 350  |            | mA         |
| $I_{scp}$                     | Short Circuit Peak Current | $T_j = 25$ °C   |      | 2.2  |            | A          |

**ELECTRICAL CHARACTERISTICS FOR L7815C** (refer to the test circuits,  $T_j = 0$  to  $125$  °C,  $V_i = 23$  V,  $I_o = 500$  mA,  $C_i = 0.33$   $\mu$ F,  $C_o = 0.1$   $\mu$ F unless otherwise specified)

| Symbol                        | Parameter                  | Test Conditions   | Min.  | Typ. | Max.       | Unit       |
|-------------------------------|----------------------------|---|-------|------|------------|------------|
| $V_o$                         | Output Voltage             | $T_j = 25$ °C   | 14.4  | 15   | 15.6       | V          |
| $V_o$                         | Output Voltage             | $I_o = 5$ mA to 1 A $P_o \leq 15$ W<br>$V_i = 17.5$ to 30 V               | 14.25 | 15   | 15.75      | V          |
| $\Delta V_o^*$                | Line Regulation            | $V_i = 17.5$ to 30 V $T_j = 25$ °C<br>$V_i = 20$ to 26 V $T_j = 25$ °C    |       |      | 300<br>150 | mV<br>mV   |
| $\Delta V_o^*$                | Load Regulation            | $I_o = 5$ to 1500 mA $T_j = 25$ °C<br>$I_o = 250$ to 750 mA $T_j = 25$ °C |       |      | 300<br>150 | mV<br>mV   |
| $I_d$                         | Quiescent Current          | $T_j = 25$ °C   |       |      | 8          | mA         |
| $\Delta I_d$                  | Quiescent Current Change   | $I_o = 5$ to 1000 mA  |       |      | 0.5        | mA         |
| $\Delta I_d$                  | Quiescent Current Change   | $V_i = 17.5$ to 30 V  |       |      | 1          | mA         |
| $\frac{\Delta V_o}{\Delta T}$ | Output Voltage Drift       | $I_o = 5$ mA  |       | -1   |            | mV/°C      |
| eN                            | Output Noise Voltage       | B = 10Hz to 100KHz $T_j = 25$ °C  |       | 90   |            | $\mu$ V    |
| SVR                           | Supply Voltage Rejection   | $V_i = 18.5$ to 28.5 V $f = 120$ Hz                                       | 54    |      |            | dB         |
| $V_d$                         | Dropout Voltage            | $I_o = 1$ A $T_j = 25$ °C   |       | 2    |            | V          |
| $R_o$                         | Output Resistance          | $f = 1$ KHz   |       | 19   |            | m $\Omega$ |
| $I_{sc}$                      | Short Circuit Current      | $V_i = 35$ V $T_j = 25$ °C  |       | 230  |            | mA         |
| $I_{scp}$                     | Short Circuit Peak Current | $T_j = 25$ °C   |       | 2.1  |            | A          |

\* Load and line regulation are specified at constant junction temperature. Changes in  $V_o$  due to heating effects must be taken into account separately. Pulse testing with low duty cycle is used.

**ELECTRICAL CHARACTERISTICS FOR L7818C** (refer to the test circuits,  $T_j = 0$  to  $125$  °C,  $V_i = 26$  V,  $I_o = 500$  mA,  $C_i = 0.33$   $\mu$ F,  $C_o = 0.1$   $\mu$ F unless otherwise specified)

| Symbol                        | Parameter                  | Test Conditions   | Min. | Typ. | Max.       | Unit       |
|-------------------------------|----------------------------|---|------|------|------------|------------|
| $V_o$                         | Output Voltage             | $T_j = 25$ °C   | 17.3 | 18   | 18.7       | V          |
| $V_o$                         | Output Voltage             | $I_o = 5$ mA to 1 A $P_o \leq 15$ W<br>$V_i = 21$ to 33 V                 | 17.1 | 18   | 18.9       | V          |
| $\Delta V_o^*$                | Line Regulation            | $V_i = 21$ to 33 V $T_j = 25$ °C<br>$V_i = 24$ to 30 V $T_j = 25$ °C      |      |      | 360<br>180 | mV<br>mV   |
| $\Delta V_o^*$                | Load Regulation            | $I_o = 5$ to 1500 mA $T_j = 25$ °C<br>$I_o = 250$ to 750 mA $T_j = 25$ °C |      |      | 360<br>180 | mV<br>mV   |
| $I_d$                         | Quiescent Current          | $T_j = 25$ °C   |      |      | 8          | mA         |
| $\Delta I_d$                  | Quiescent Current Change   | $I_o = 5$ to 1000 mA  |      |      | 0.5        | mA         |
| $\Delta I_d$                  | Quiescent Current Change   | $V_i = 21$ to 33 V  |      |      | 1          | mA         |
| $\frac{\Delta V_o}{\Delta T}$ | Output Voltage Drift       | $I_o = 5$ mA  |      | -1   |            | mV/°C      |
| eN                            | Output Noise Voltage       | B = 10Hz to 100KHz $T_j = 25$ °C  |      | 110  |            | $\mu$ V    |
| SVR                           | Supply Voltage Rejection   | $V_i = 22$ to 32 V $f = 120$ Hz   | 53   |      |            | dB         |
| $V_d$                         | Dropout Voltage            | $I_o = 1$ A $T_j = 25$ °C   |      | 2    |            | V          |
| $R_o$                         | Output Resistance          | $f = 1$ KHz   |      | 22   |            | m $\Omega$ |
| $I_{sc}$                      | Short Circuit Current      | $V_i = 35$ V $T_j = 25$ °C  |      | 200  |            | mA         |
| $I_{scp}$                     | Short Circuit Peak Current | $T_j = 25$ °C   |      | 2.1  |            | A          |

**ELECTRICAL CHARACTERISTICS FOR L7820C** (refer to the test circuits,  $T_j = 0$  to  $125$  °C,  $V_i = 28$  V,  $I_o = 500$  mA,  $C_i = 0.33$   $\mu$ F,  $C_o = 0.1$   $\mu$ F unless otherwise specified)

| Symbol                        | Parameter                  | Test Conditions   | Min. | Typ. | Max.       | Unit       |
|-------------------------------|----------------------------|---|------|------|------------|------------|
| $V_o$                         | Output Voltage             | $T_j = 25$ °C   | 19.2 | 20   | 20.8       | V          |
| $V_o$                         | Output Voltage             | $I_o = 5$ mA to 1 A $P_o \leq 15$ W<br>$V_i = 23$ to 35 V                 | 19   | 20   | 21         | V          |
| $\Delta V_o^*$                | Line Regulation            | $V_i = 22.5$ to 35 V $T_j = 25$ °C<br>$V_i = 26$ to 32 V $T_j = 25$ °C    |      |      | 400<br>200 | mV<br>mV   |
| $\Delta V_o^*$                | Load Regulation            | $I_o = 5$ to 1500 mA $T_j = 25$ °C<br>$I_o = 250$ to 750 mA $T_j = 25$ °C |      |      | 400<br>200 | mV<br>mV   |
| $I_d$                         | Quiescent Current          | $T_j = 25$ °C   |      |      | 8          | mA         |
| $\Delta I_d$                  | Quiescent Current Change   | $I_o = 5$ to 1000 mA  |      |      | 0.5        | mA         |
| $\Delta I_d$                  | Quiescent Current Change   | $V_i = 23$ to 35 V  |      |      | 1          | mA         |
| $\frac{\Delta V_o}{\Delta T}$ | Output Voltage Drift       | $I_o = 5$ mA  |      | -1   |            | mV/°C      |
| eN                            | Output Noise Voltage       | B = 10Hz to 100KHz $T_j = 25$ °C  |      | 150  |            | $\mu$ V    |
| SVR                           | Supply Voltage Rejection   | $V_i = 24$ to 35 V $f = 120$ Hz   | 52   |      |            | dB         |
| $V_d$                         | Dropout Voltage            | $I_o = 1$ A $T_j = 25$ °C   |      | 2    |            | V          |
| $R_o$                         | Output Resistance          | $f = 1$ KHz   |      | 24   |            | m $\Omega$ |
| $I_{sc}$                      | Short Circuit Current      | $V_i = 35$ V $T_j = 25$ °C  |      | 180  |            | mA         |
| $I_{scp}$                     | Short Circuit Peak Current | $T_j = 25$ °C   |      | 2.1  |            | A          |

\* Load and line regulation are specified at constant junction temperature. Changes in  $V_o$  due to heating effects must be taken into account separately. Pulse testing with low duty cycle is used.

**ELECTRICAL CHARACTERISTICS FOR L7824C** (refer to the test circuits,  $T_j = 0$  to  $125$  °C,  $V_i = 33$  V,  $I_o = 500$  mA,  $C_i = 0.33$   $\mu$ F,  $C_o = 0.1$   $\mu$ F unless otherwise specified)

| Symbol                        | Parameter                  | Test Conditions   | Min. | Typ. | Max.       | Unit       |
|-------------------------------|----------------------------|---|------|------|------------|------------|
| $V_o$                         | Output Voltage             | $T_j = 25$ °C   | 23   | 24   | 25         | V          |
| $V_o$                         | Output Voltage             | $I_o = 5$ mA to $1$ A $P_o \leq 15$ W<br>$V_i = 27$ to $38$ V                 | 22.8 | 24   | 25.2       | V          |
| $\Delta V_o^*$                | Line Regulation            | $V_i = 27$ to $38$ V $T_j = 25$ °C<br>$V_i = 30$ to $36$ V $T_j = 25$ °C      |      |      | 480<br>240 | mV<br>mV   |
| $\Delta V_o^*$                | Load Regulation            | $I_o = 5$ to $1500$ mA $T_j = 25$ °C<br>$I_o = 250$ to $750$ mA $T_j = 25$ °C |      |      | 480<br>240 | mV<br>mV   |
| $I_d$                         | Quiescent Current          | $T_j = 25$ °C   |      |      | 8          | mA         |
| $\Delta I_d$                  | Quiescent Current Change   | $I_o = 5$ to $1000$ mA  |      |      | 0.5        | mA         |
| $\Delta I_d$                  | Quiescent Current Change   | $V_i = 27$ to $38$ V  |      |      | 1          | mA         |
| $\frac{\Delta V_o}{\Delta T}$ | Output Voltage Drift       | $I_o = 5$ mA  |      | -1.5 |            | mV/°C      |
| eN                            | Output Noise Voltage       | $B = 10$ Hz to $100$ KHz $T_j = 25$ °C  |      | 170  |            | $\mu$ V    |
| SVR                           | Supply Voltage Rejection   | $V_i = 28$ to $38$ V $f = 120$ Hz   | 50   |      |            | dB         |
| $V_d$                         | Dropout Voltage            | $I_o = 1$ A $T_j = 25$ °C   |      | 2    |            | V          |
| $R_o$                         | Output Resistance          | $f = 1$ KHz   |      | 28   |            | m $\Omega$ |
| $I_{sc}$                      | Short Circuit Current      | $V_i = 35$ V $T_j = 25$ °C  |      | 150  |            | mA         |
| $I_{scp}$                     | Short Circuit Peak Current | $T_j = 25$ °C   |      | 2.1  |            | A          |

\* Load and line regulation are specified at constant junction temperature. Changes in  $V_o$  due to heating effects must be taken into account separately. Pulse testing with low duty cycle is used.

Figure 4 : Dropout Voltage vs. Junction Temperature.

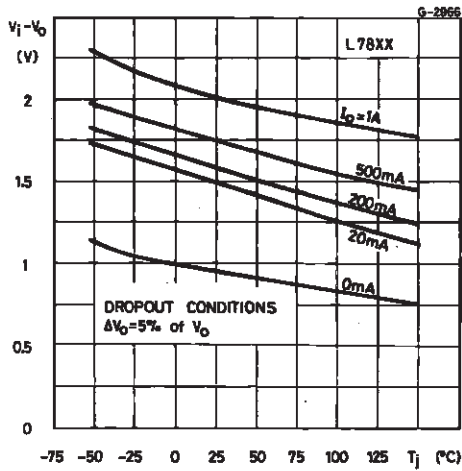


Figure 5 : Peak Output Current vs. Input/output Differential Voltage.

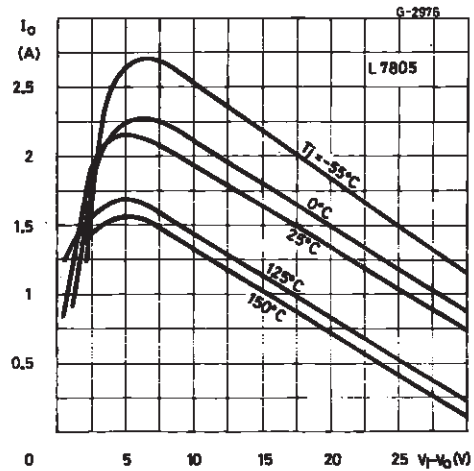


Figure 6 : Supply Voltage Rejection vs. Frequency.

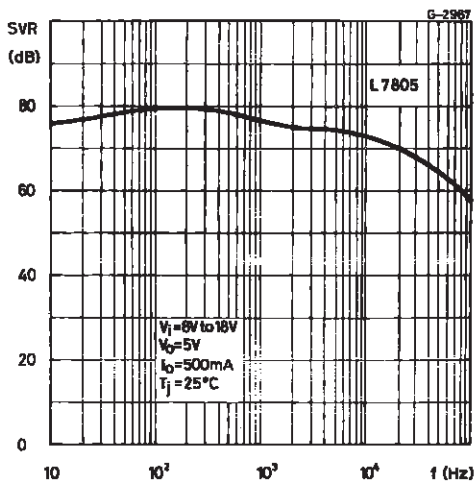


Figure 7 : Output Voltage vs. Junction Temperature.

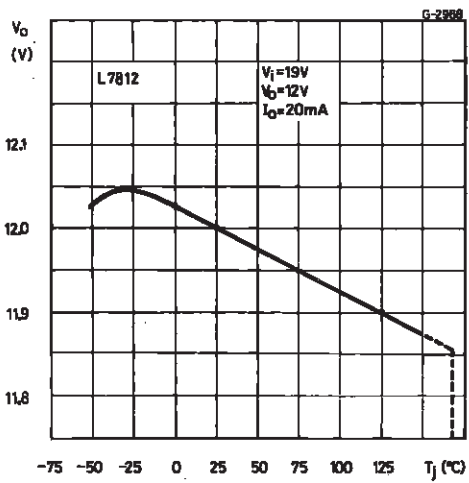


Figure 8 : Output Impedance vs. Frequency.

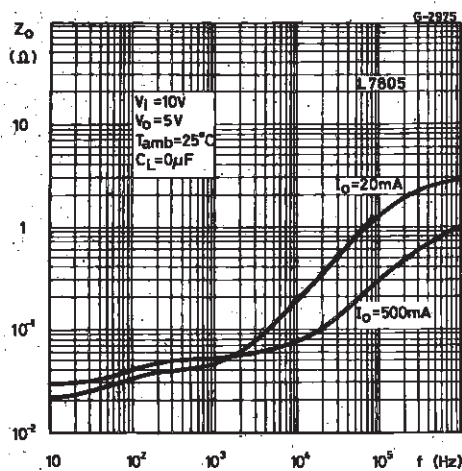


Figure 9 : Quiescent Current vs. Junction Temperature.

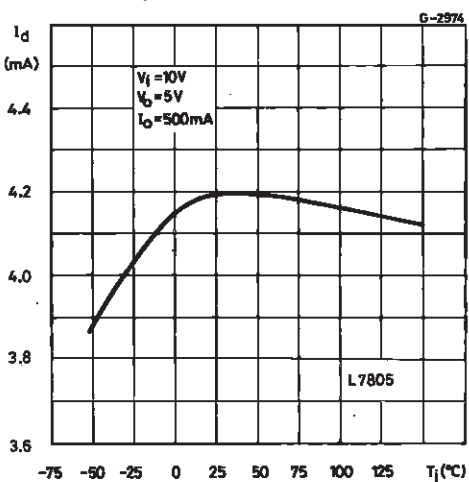


Figure 10 : Load Transient Response.

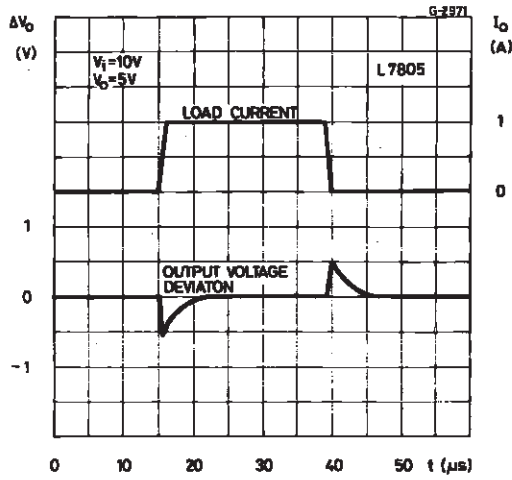


Figure 11 : Line Transient Response.

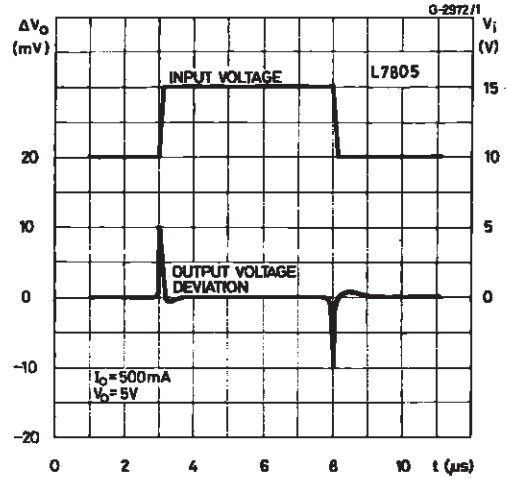


Figure 12 : Quiescent Current vs. Input Voltage.

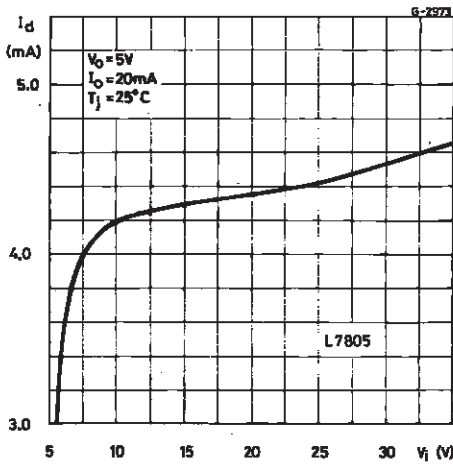


Figure 13 : Fixed Output Regulator.

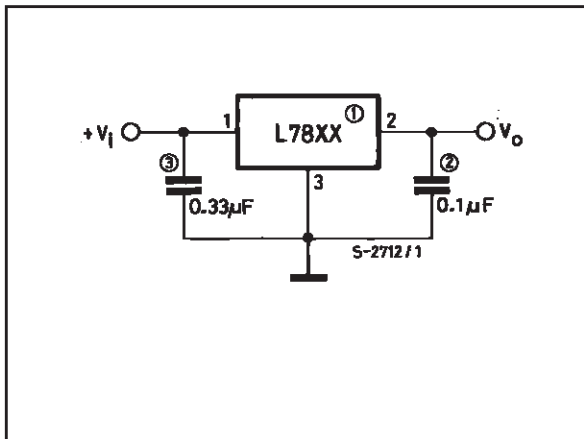
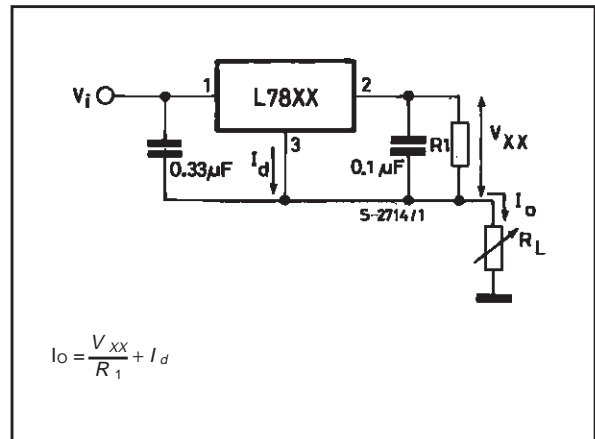


Figure 14 : Current Regulator.

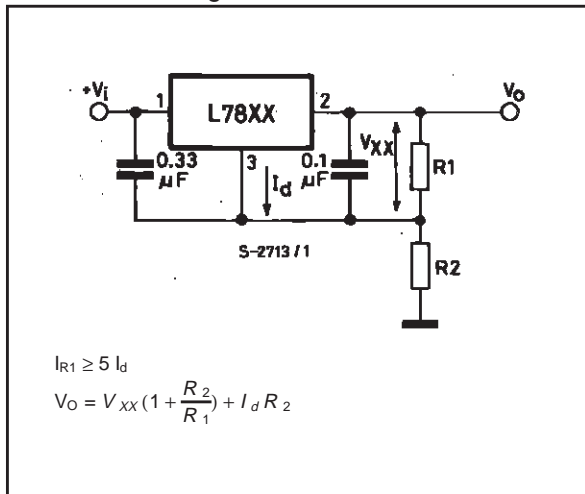


NOTE:

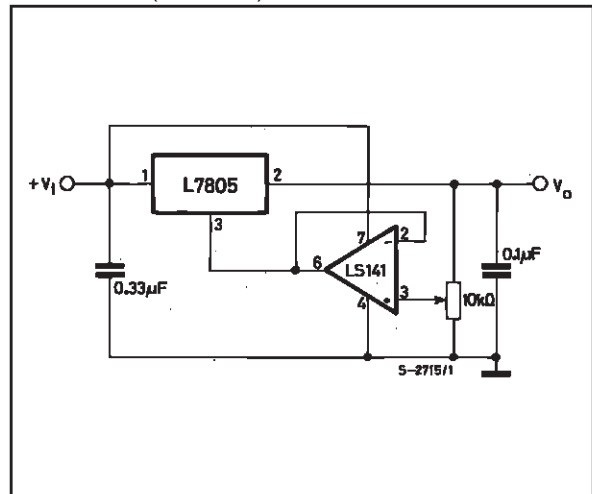
1. To specify an output voltage, substitute voltage value for "XX".
2. Although no output capacitor is need for stability, it does improve transient response.
3. Required if cregulator is locate an appreciable distance from power supply filter.



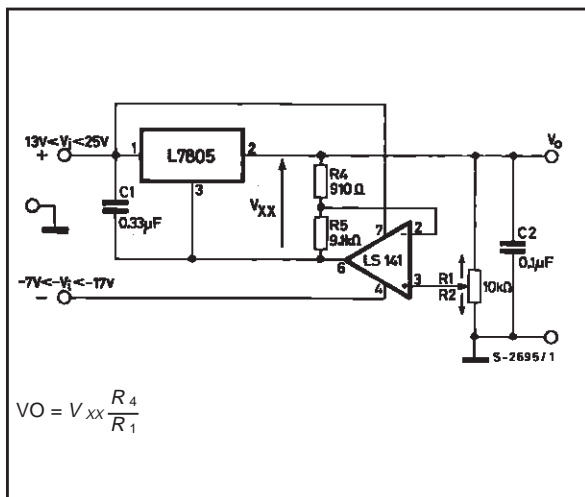
**Figure 15 :** Circuit for Increasing Output Voltage.



**Figure 16 :** Adjustable Output Regulator (7 to 30V).



**Figure 17 :** 0.5 to 10V Regulator.



**Figure 18 :** High Current Voltage Regulator.

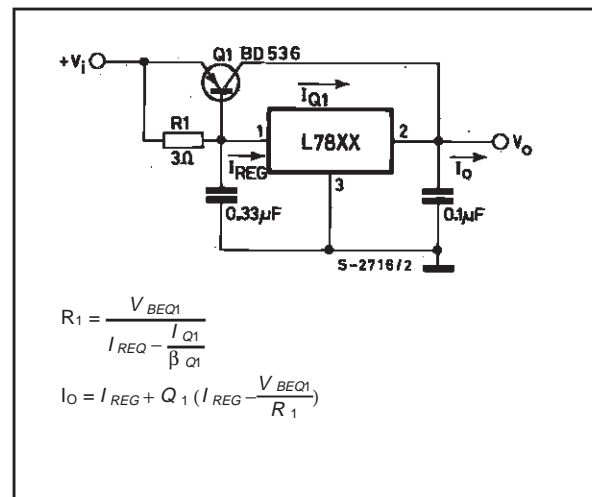


Figure 19 : High Output Current with Short Circuit Protection.

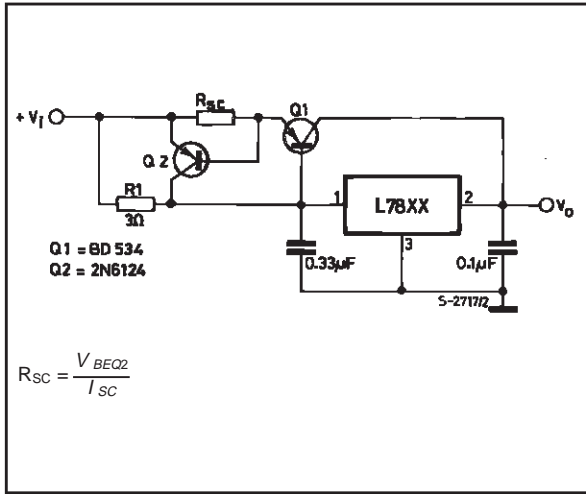


Figure 20 : Tracking Voltage Regulator.

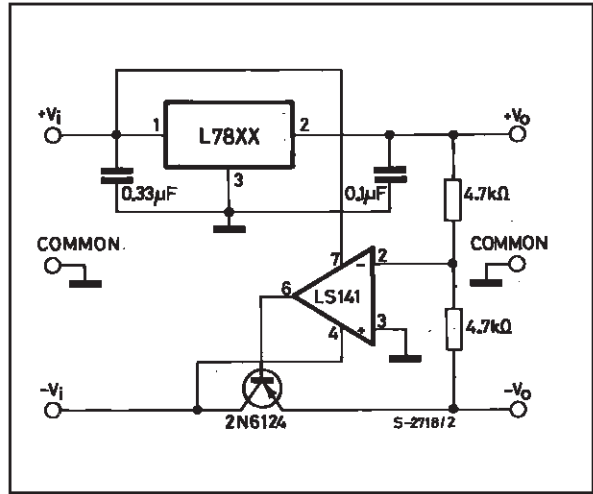
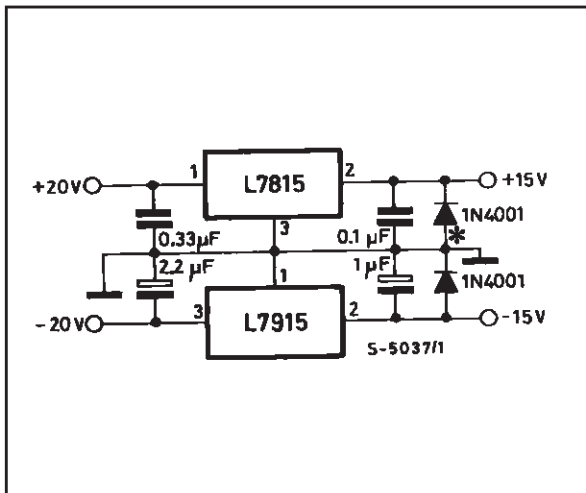


Figure 21 : Split Power Supply ( $\pm 15V - 1A$ ).



\* Against potential latch-up problems.

Figure 22 : Negative Output Voltage Circuit.

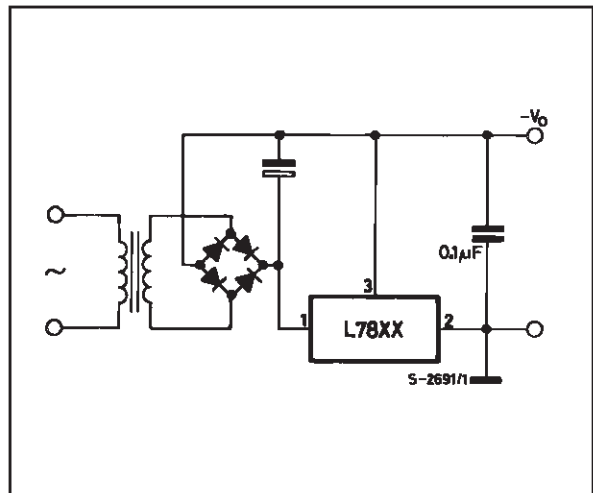


Figure 23 : Switching Regulator.

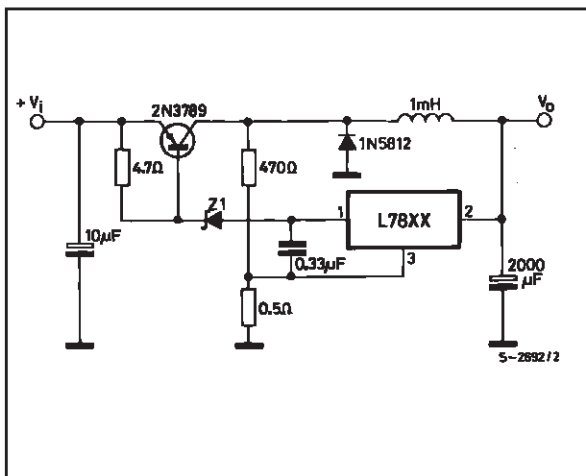


Figure 24 : High Input Voltage Circuit.

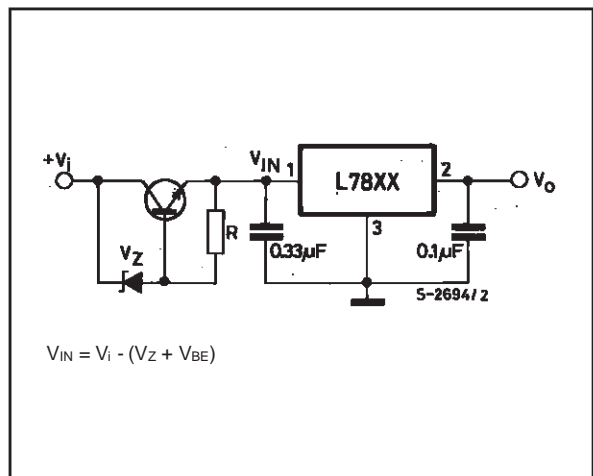


Figure 25 : High Input Voltage Circuit.

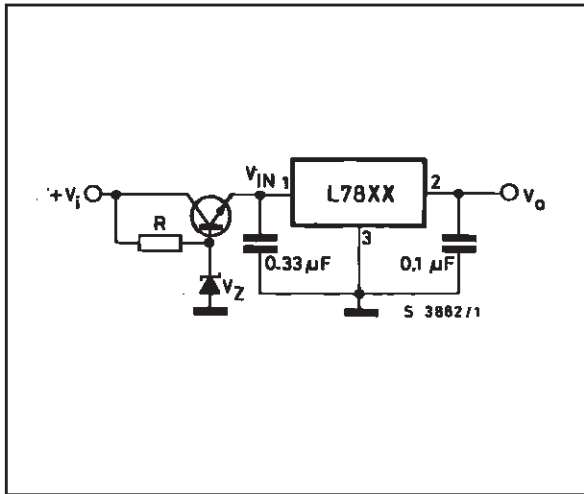


Figure 26 : High Output Voltage Regulator.

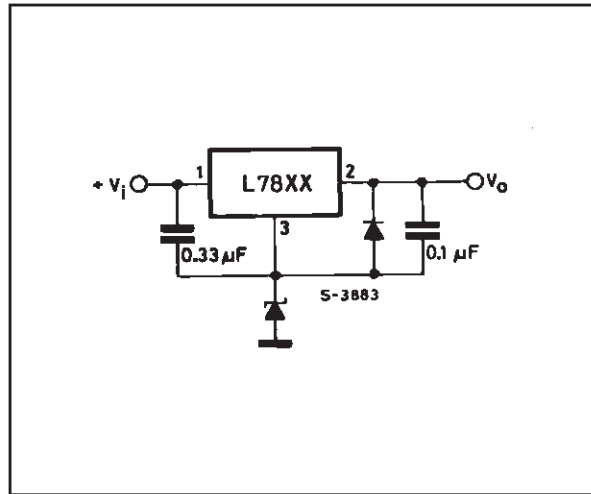


Figure 27 : High Input and Output Voltage.

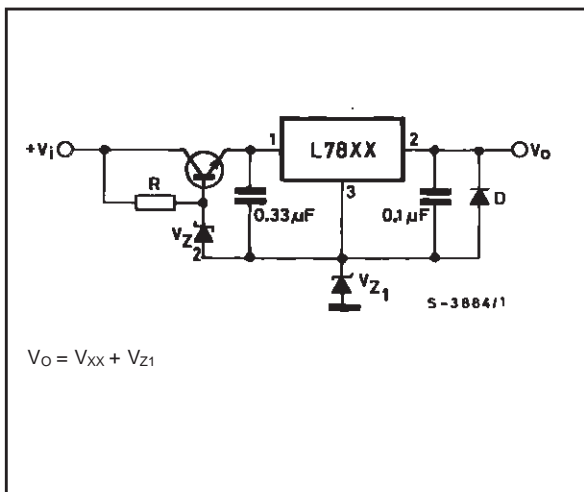


Figure 28 : Reducing Power Dissipation with Dropping Resistor.

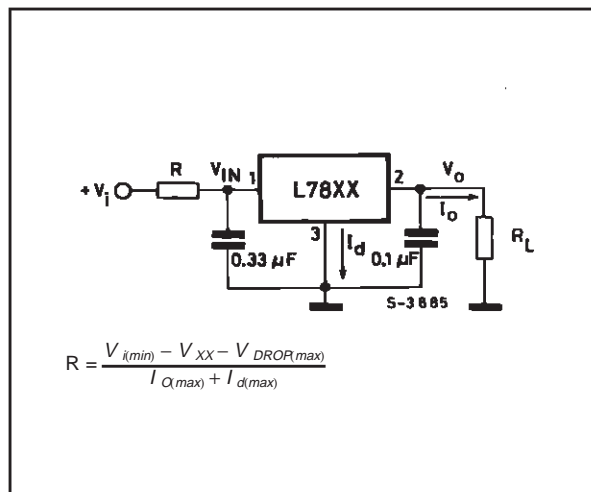
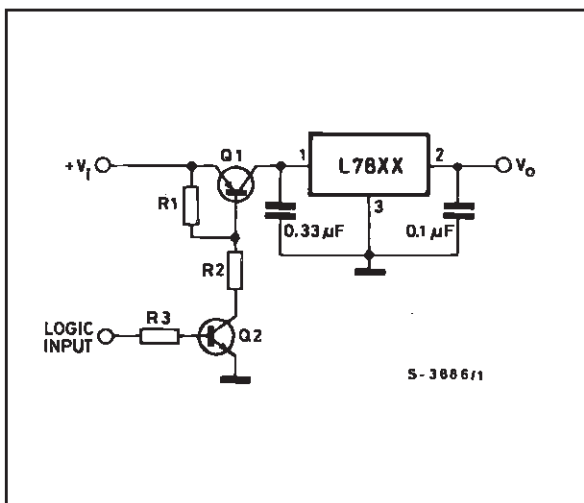
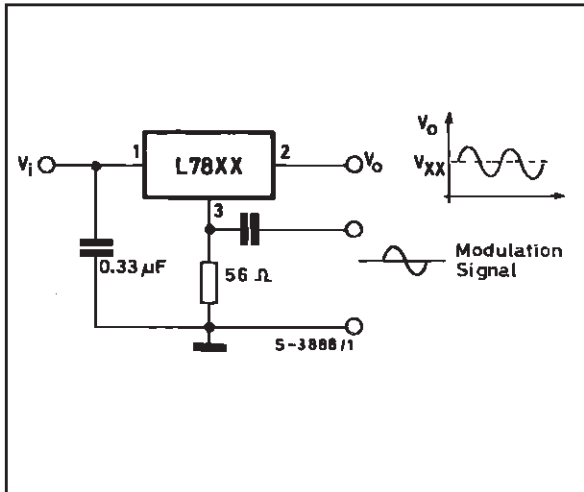


Figure 29 : Remote Shutdown.

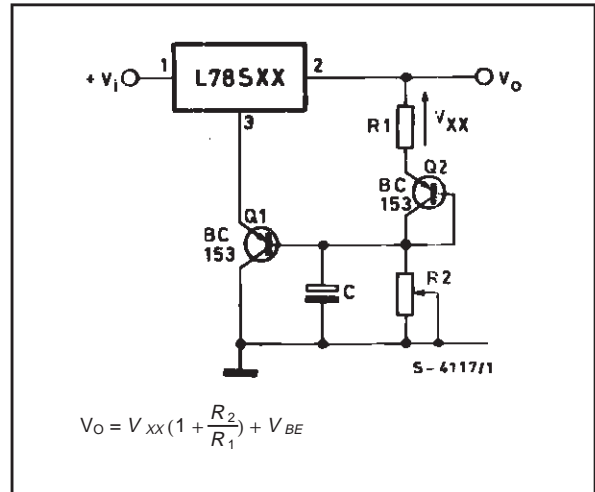


**Figure 30 :** Power AM Modulator (unity voltage gain,  $I_o < 1A$ ).



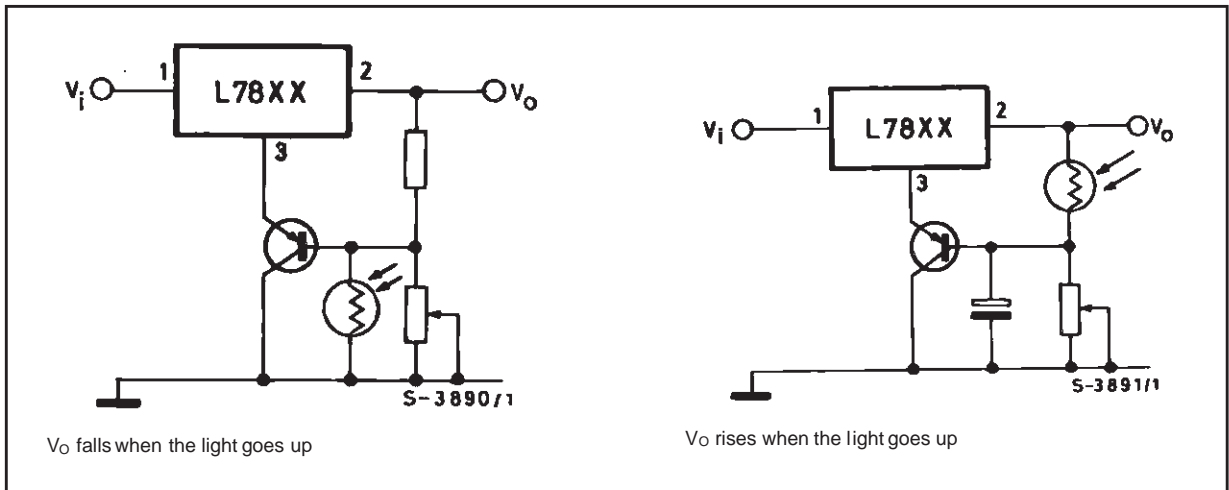
**NOTE:** The circuit performs well up to 100KHz

**Figure 31 :** Adjustable Output Voltage with Temperature Compensation.

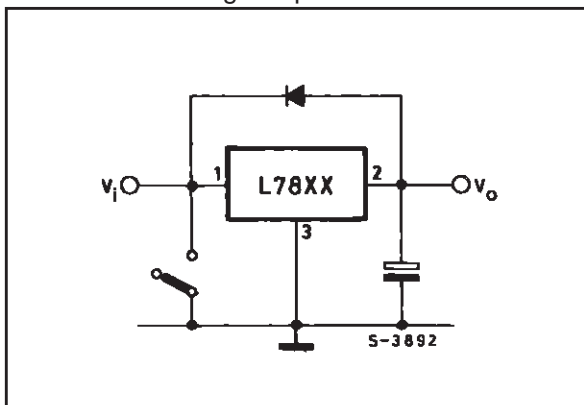


**NOTE:** Q<sub>2</sub> is connected as a diode in order to compensate the variation of the Q<sub>1</sub> V<sub>BE</sub> with the temperature. C allows a slow rise-time of the V<sub>o</sub>

**Figure 32 :** Light Controllers ( $V_o \text{ min} = V_{XX} + V_{BE}$ ).



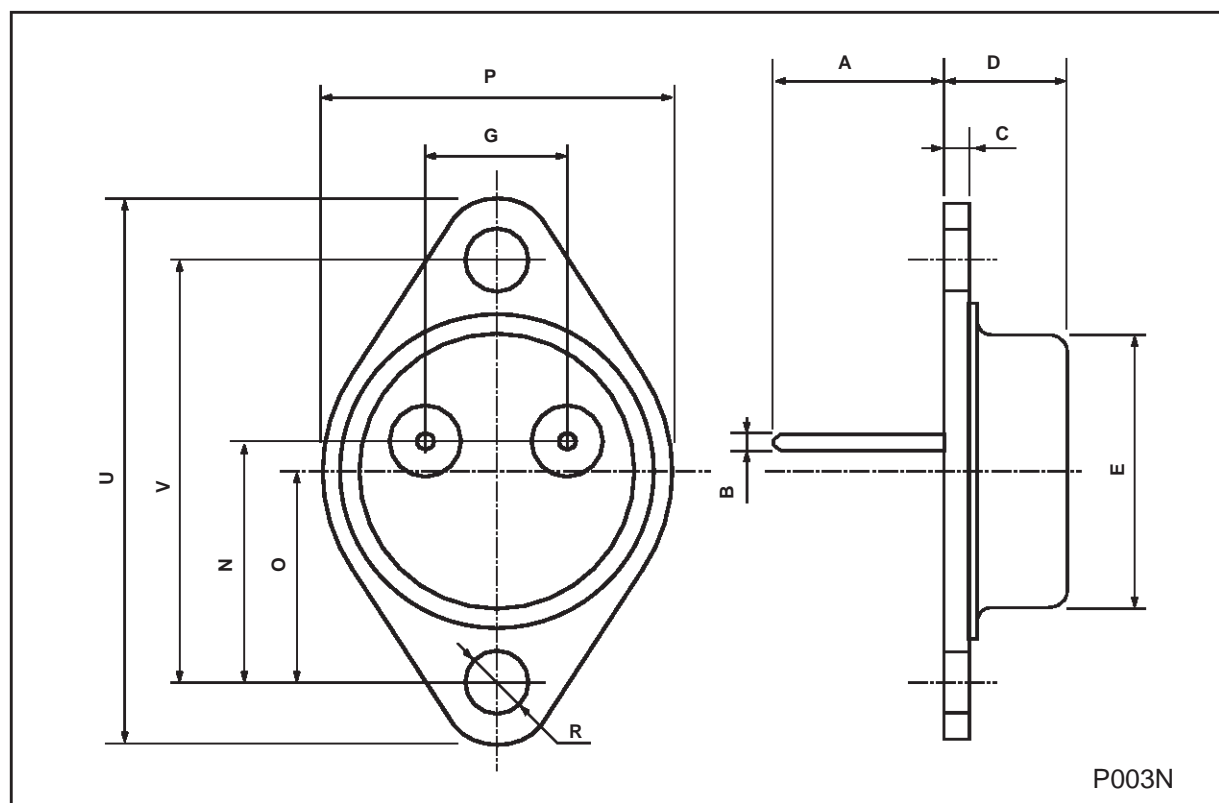
**Figure 33 :** Protection against Input Short-circuit with High Capacitance Loads.



Application with high capacitance loads and an output voltage greater than 6 volts need an external diode (see fig. 33) to protect the device against input short circuit. In this case the input voltage falls rapidly while the output voltage decrease slowly. The capacitance discharges by means of the Base-Emitter junction of the series pass transistor in the regulator. If the energy is sufficiently high, the transistor may be destroyed. The external diode by-passes the current from the IC to ground.

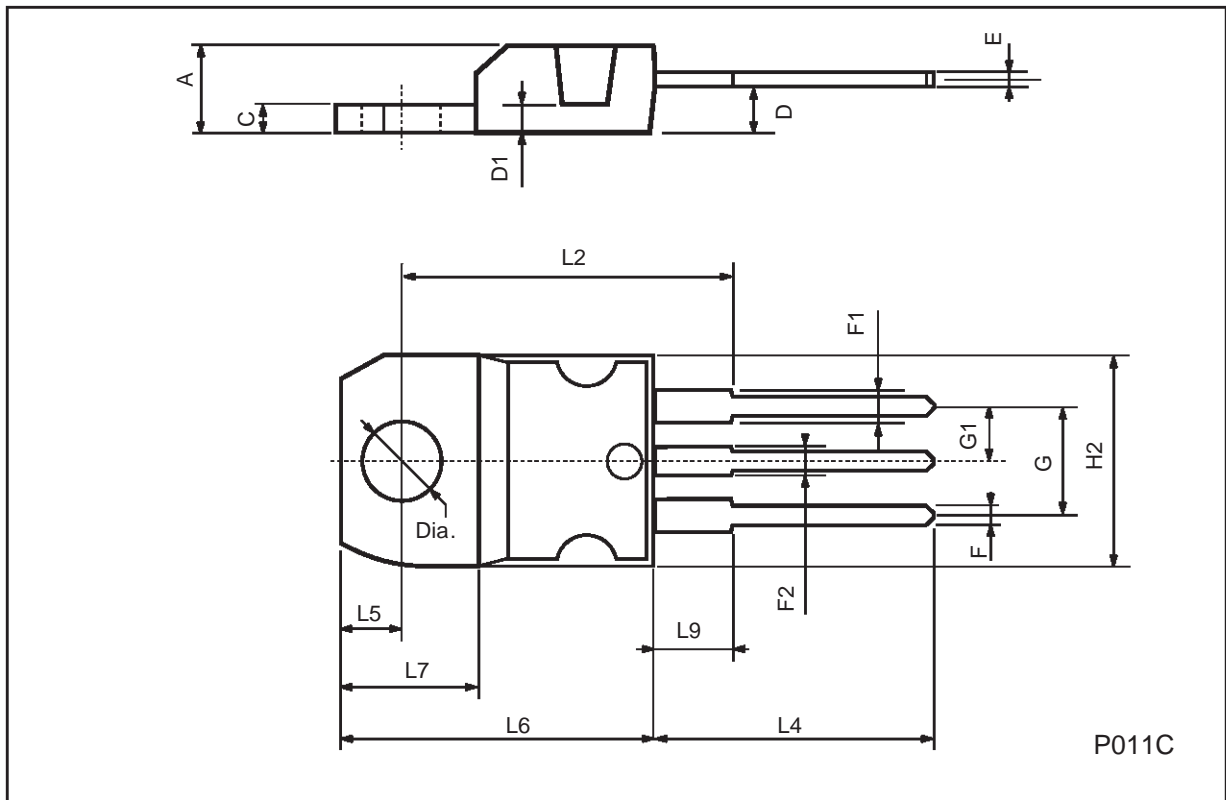
## TO-3 (R) MECHANICAL DATA

| DIM. | mm   |       |       | inch  |       |       |
|------|------|-------|-------|-------|-------|-------|
|      | MIN. | TYP.  | MAX.  | MIN.  | TYP.  | MAX.  |
| A    |      | 11.7  |       |       | 0.460 |       |
| B    | 0.96 |       | 1.10  | 0.037 |       | 0.043 |
| C    |      |       | 1.70  |       |       | 0.066 |
| D    |      |       | 8.7   |       |       | 0.342 |
| E    |      |       | 20.0  |       |       | 0.787 |
| G    |      | 10.9  |       |       | 0.429 |       |
| N    |      | 16.9  |       |       | 0.665 |       |
| P    |      |       | 26.2  |       |       | 1.031 |
| R    | 3.88 |       | 4.09  | 0.152 |       | 0.161 |
| U    |      |       | 39.50 |       |       | 1.555 |
| V    |      | 30.10 |       |       | 1.185 |       |



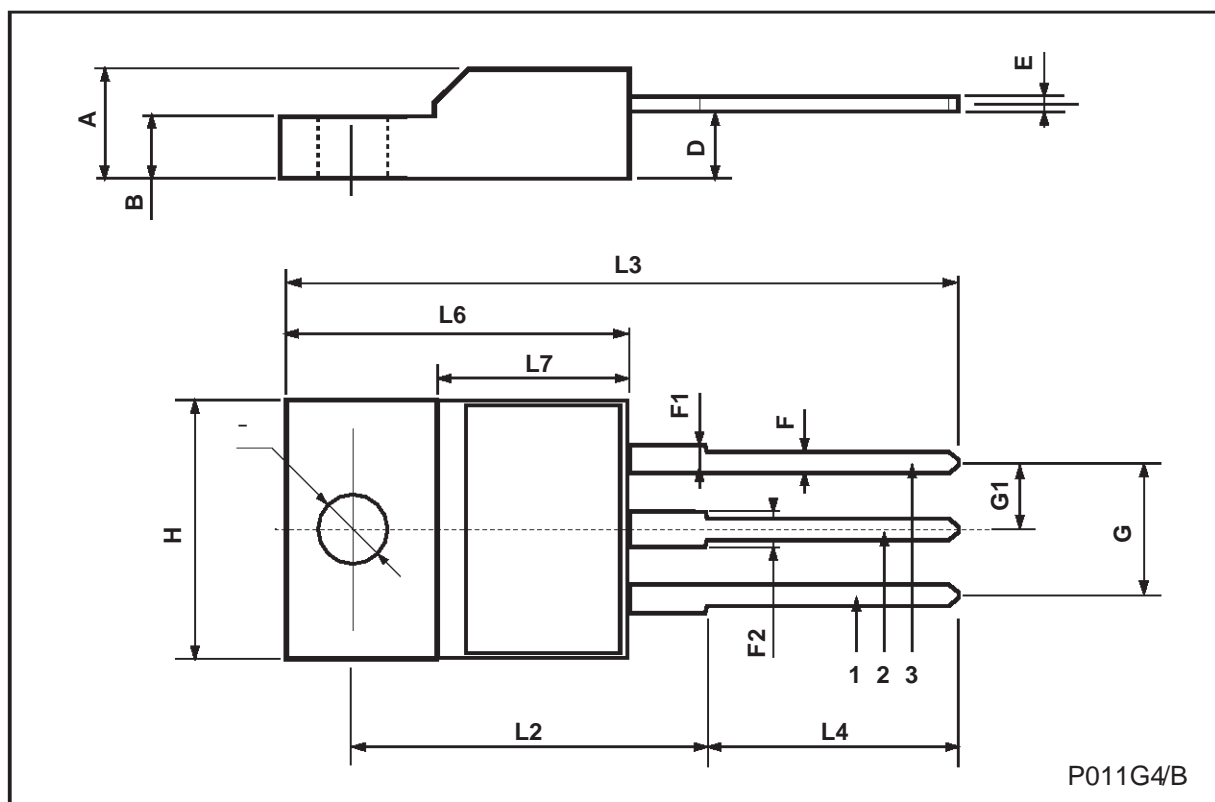
TO-220 MECHANICAL DATA

| DIM. | mm    |      |       | inch  |       |       |
|------|-------|------|-------|-------|-------|-------|
|      | MIN.  | TYP. | MAX.  | MIN.  | TYP.  | MAX.  |
| A    | 4.40  |      | 4.60  | 0.173 |       | 0.181 |
| C    | 1.23  |      | 1.32  | 0.048 |       | 0.051 |
| D    | 2.40  |      | 2.72  | 0.094 |       | 0.107 |
| D1   |       | 1.27 |       |       | 0.050 |       |
| E    | 0.49  |      | 0.70  | 0.019 |       | 0.027 |
| F    | 0.61  |      | 0.88  | 0.024 |       | 0.034 |
| F1   | 1.14  |      | 1.70  | 0.044 |       | 0.067 |
| F2   | 1.14  |      | 1.70  | 0.044 |       | 0.067 |
| G    | 4.95  |      | 5.15  | 0.194 |       | 0.203 |
| G1   | 2.4   |      | 2.7   | 0.094 |       | 0.106 |
| H2   | 10.0  |      | 10.40 | 0.393 |       | 0.409 |
| L2   |       | 16.4 |       |       | 0.645 |       |
| L4   | 13.0  |      | 14.0  | 0.511 |       | 0.551 |
| L5   | 2.65  |      | 2.95  | 0.104 |       | 0.116 |
| L6   | 15.25 |      | 15.75 | 0.600 |       | 0.620 |
| L7   | 6.2   |      | 6.6   | 0.244 |       | 0.260 |
| L9   | 3.5   |      | 3.93  | 0.137 |       | 0.154 |
| DIA. | 3.75  |      | 3.85  | 0.147 |       | 0.151 |



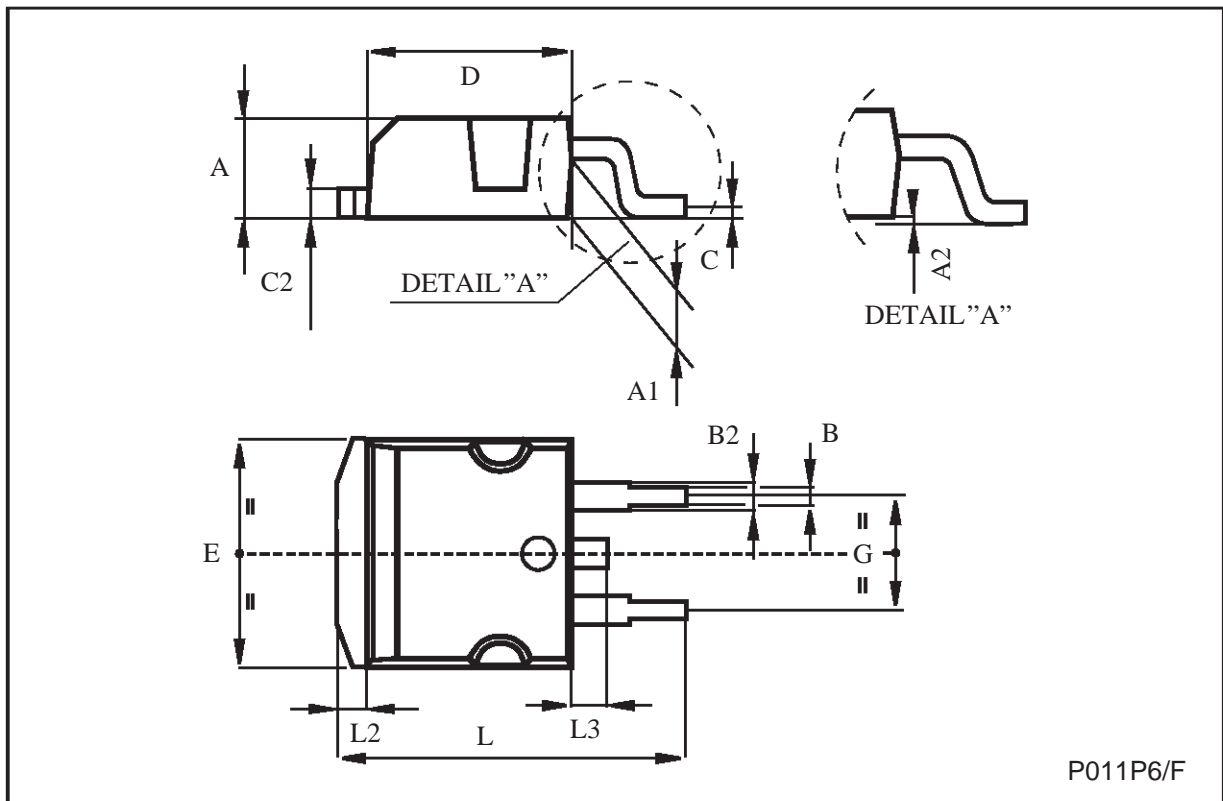
## TO-220FP MECHANICAL DATA

| DIM. | mm   |      |      | inch  |       |       |
|------|------|------|------|-------|-------|-------|
|      | MIN. | TYP. | MAX. | MIN.  | TYP.  | MAX.  |
| A    | 4.4  |      | 4.6  | 0.173 |       | 0.181 |
| B    | 2.5  |      | 2.7  | 0.098 |       | 0.106 |
| D    | 2.5  |      | 2.75 | 0.098 |       | 0.108 |
| E    | 0.45 |      | 0.7  | 0.017 |       | 0.027 |
| F    | 0.75 |      | 1    | 0.030 |       | 0.039 |
| F1   | 1.15 |      | 1.7  | 0.045 |       | 0.067 |
| F2   | 1.15 |      | 1.7  | 0.045 |       | 0.067 |
| G    | 4.95 |      | 5.2  | 0.195 |       | 0.204 |
| G1   | 2.4  |      | 2.7  | 0.094 |       | 0.106 |
| H    | 10   |      | 10.4 | 0.393 |       | 0.409 |
| L2   |      | 16   |      |       | 0.630 |       |
| L3   | 28.6 |      | 30.6 | 1.126 |       | 1.204 |
| L4   | 9.8  |      | 10.6 | 0.385 |       | 0.417 |
| L6   | 15.9 |      | 16.4 | 0.626 |       | 0.645 |
| L7   | 9    |      | 9.3  | 0.354 |       | 0.366 |
| Ø    | 3    |      | 3.2  | 0.118 |       | 0.126 |



TO-263 (D<sup>2</sup>PAK) MECHANICAL DATA

| DIM. | mm   |      |       | inch  |      |       |
|------|------|------|-------|-------|------|-------|
|      | MIN. | TYP. | MAX.  | MIN.  | TYP. | MAX.  |
| A    | 4.4  |      | 4.6   | 0.173 |      | 0.181 |
| A1   | 2.49 |      | 2.69  | 0.098 |      | 0.106 |
| B    | 0.7  |      | 0.93  | 0.027 |      | 0.036 |
| B2   | 1.14 |      | 1.7   | 0.044 |      | 0.067 |
| C    | 0.45 |      | 0.6   | 0.017 |      | 0.023 |
| C2   | 1.23 |      | 1.36  | 0.048 |      | 0.053 |
| D    | 8.95 |      | 9.35  | 0.352 |      | 0.368 |
| E    | 10   |      | 10.4  | 0.393 |      | 0.409 |
| G    | 4.88 |      | 5.28  | 0.192 |      | 0.208 |
| L    | 15   |      | 15.85 | 0.590 |      | 0.624 |
| L2   | 1.27 |      | 1.4   | 0.050 |      | 0.055 |
| L3   | 1.4  |      | 1.75  | 0.055 |      | 0.068 |





Information furnished is believed to be accurate and reliable. However, STMicroelectronics assumes no responsibility for the consequences of use of such information nor for any infringement of patents or other rights of third parties which may result from its use. No license is granted by implication or otherwise under any patent or patent rights of STMicroelectronics. Specification mentioned in this publication are subject to change without notice. This publication supersedes and replaces all information previously supplied. STMicroelectronics products are not authorized for use as critical components in life support devices or systems without express written approval of STMicroelectronics.

The ST logo is a registered trademark of STMicroelectronics

© 2000 STMicroelectronics – Printed in Italy – All Rights Reserved

STMicroelectronics GROUP OF COMPANIES

Australia - Brazil - China - Finland - France - Germany - Hong Kong - India - Italy - Japan - Malaysia - Malta - Morocco  
Singapore - Spain - Sweden - Switzerland - United Kingdom - U.S.A.

<http://www.st.com>