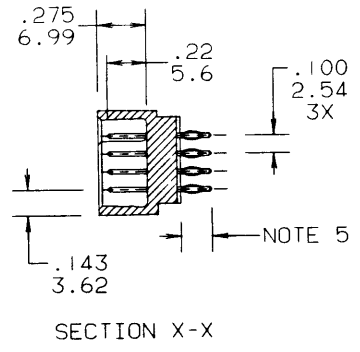
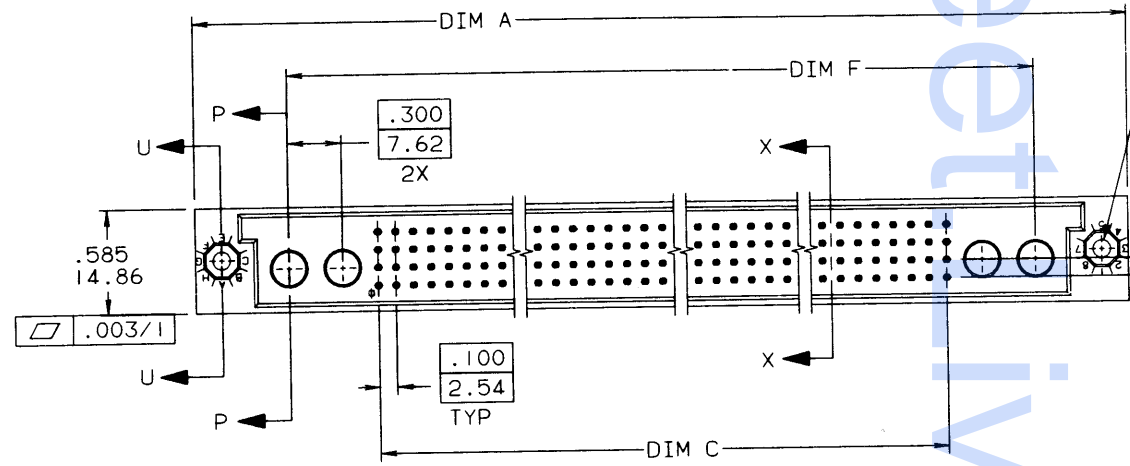
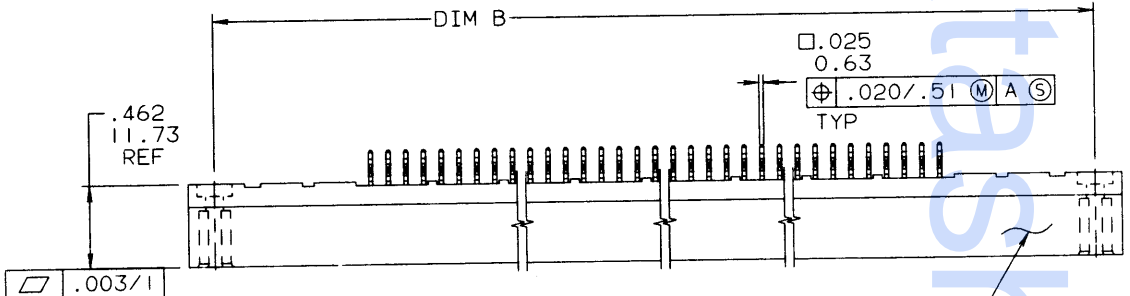


REVISIONS			
REV	DESCRIPTION	BY	DATE
A	RELEASED	RDS	02/15/91
B	ECR V12534	SAR	10/09/91

PRODUCT NO
50038-XXXXX



NOTES:

- THIS PRODUCT IS CONFIGURED IN SIZE OF 10 THRU 80 COLUMNS IN INCREMENTS OF ONE.
IE: 10,11,12,13,.....79,80.
- PRODUCT NUMBERING CODE:
50038 - X XXX X
 - TAIL LENGTH
 - NO OF POSITIONS
 - PLATING
 - BASE NUMBER
- MATERIALS:
HOUSING GLASS FILLED PPS.
PIN PHOS BRONZE

NOTES CONTINUED ON SHEET 2

SHEET INDEX	ISSUE SH NO	B	A	TOLERANCE UNLESS OTHERWISE NOTED		MATL	DR	DATE
				INCH	MM		D. SHEAFFER	02/15/91
				LINEAR			S. CLARK	02/15/91
							S. CLARK	02/15/91
							S. CLARK	02/15/91
				ANGLES	0° ± 2°			

CUSTOMER COPY
CODE IDENT
22526

DuPont Electronics



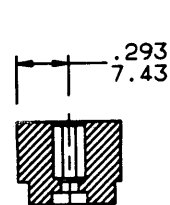
TITLE 4 ROW VERTICAL HEADERS
COMPLIANT PRESS FIT PINS
0 GUIDE PINS/4 RND AUX PORTS
SCALE SIZE DWG NO CAD SHEET 1 OF 2
2/1 C 50038

NOTE This print is the property of and embodies proprietary designs of THE DUPONT COMPANY. No part of the design shown on this print may be used in any way without the written consent of DUPONT ELECTRONICS, New Cumbland, PA.

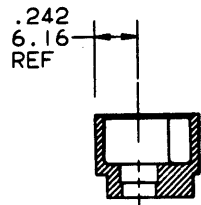
FORM E-306/TC REV. 12/89

PRODUCT NO	DIM.	LENGTH FORMULAS
50038-XXXXX	DIM A	.100/2.54 X NO. OF COLUMNS + 1.95/49.5
	DIM B	.100/2.54 X NO. OF COLUMNS + 1.65/41.9
	DIM C	.100/2.54 X NO. OF COLUMNS - .10/.25
	DIM F	.100/2.54 X NO. OF COLUMNS + .90/22.9

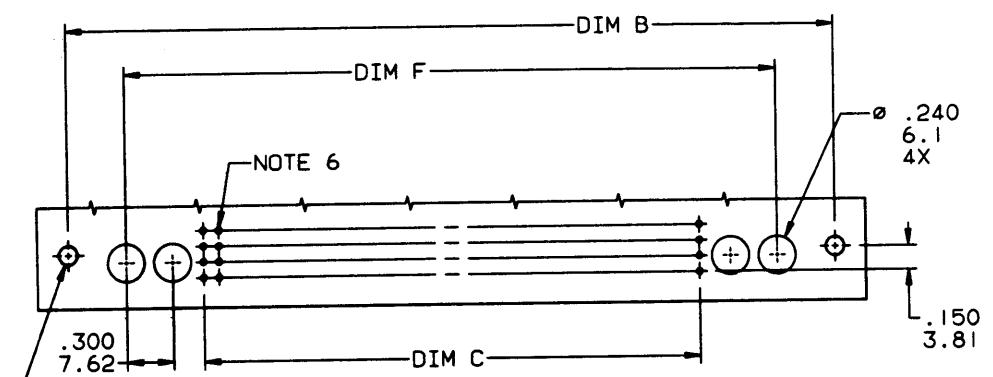
REVISIONS			
REV	DESCRIPTION	BY	DATE
A			



SECTION U-U



SECTION P-P



RECOMMENDED PCB LAYOUT
ALL HOLES LOCATED ON .100/2.54 GRID
UNLESS OTHERWISE SPECIFIED

NOTES CONTINUED FROM SHEET 1

- 4 PLATING, CONTACT AREA OPTIONS:
1 = 30μ"/.76μ GOLD 5 = 30μ"/.76μ GXT
3 = 50μ"/1.27μ GOLD 6 = 15μ"/.38μ GOLD
- ⑤ TAIL-LENGTH OPTIONS: (LENGTHS REF ONLY)
A = .177/4.5 P = .470/11.94 .062 PCB/SHROUD
C = .533/13.54 L = .188/4.78 .062 PCB
D = .733/18.62 M = .671/17.04 .062 PCB
G = .250/6.35
- ⑥ Ø.0453/1.151 DRILLED HOLE PLATED WITH .0003/.007 MIN SnPb OVER .001/.03 TO .003/.08 Cu. PLATING TO ACHIEVE A Ø.040±.003/1.02±.08 HOLE.
- 7 TO ASSURE PROPER INSTALLATION; DUPONT TOOLING, AS SPECIFIED IN INSTRUCTION MANUAL 155915-001, MUST BE USED. PIN MATING LENGTH WILL BE ±.002/.05 AFTER INSTALLATION.
- ⑧ "DUPONT", DUPONT P/N, AND LOT CODE TO APPEAR ON THIS SURFACE.
- 9 PACKAGING PER BUS-14-143.
- 10 FOR PRODUCT PERFORMANCE SEE DUPONT PRODUCT SPECIFICATION NUMBER BUS-12-090.

SHEET INDEX	ISSUE	SH NO	DO NOT SCALE DRAWING	TOLERANCE UNLESS OTHERWISE NOTED	INCH/MM	MATL	DR	DATE
	-	-					D. SHEAFFER	02/15/91
							CHK	S. CLARK
							ENGR	S. CLARK
							APPD	S. CLARK

CUSTOMER COPY
CODE IDENT
22526

DuPont Electronics



TITLE 4 ROW VERTICAL HEADERS
COMPLIANT PRESS FIT PINS
0 GUIDE PIN/4 RND AUX PORTS

SCALE	SIZE	DWG NO	CAD
2/1	C	50038	

SHEET 2

NOTE: This print is the property of and embodies proprietary designs of THE DUPONT COMPANY. No part of the design shown on this print may be used in any way without the written consent of DUPONT ELECTRONICS, New Cumberland, PA.