

Kabelverschraubungen und Zubehör/Cable fittings and accessories

GM-Gegenmutter, BS-Blindstopfen, Zwischenstützen 6kt
Messing, vernickelt

GM lock nut, BS blanking piece, hexagonal adaptor
Brass, nickel plated

Bezeichnung
Description

 Metr.  PG

Bestelltext
Designation

Bestell-Nr.
Order No.

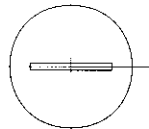
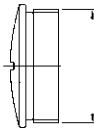
GM-Gegenmutter Messing vernickelt,
bei dünnwandiger Gehäusewand Verschraubung kontern
GM lock nut brass nickel-plated, used to lock screwed fittings
(housings with thin walls)



SW	Stärke Thickness
21	3
23	3
26	3
32	3,5
41	4
51	5
60	5

11	GM.11.SKT-MS	1-1106055-2
13,5	GM.13.SKT-MS	2-1106055-2
16	GM.16.SKT-MS	3-1106055-2
21	GM.21.SKT-MS	4-1106055-2
29	GM.29.SKT-MS	5-1106055-2
36	GM.36.SKT-MS	6-1106055-2
42	GM.42.SKT-MS	7-1106055-2

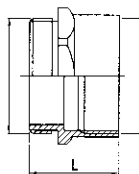
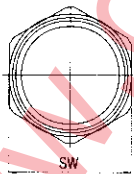
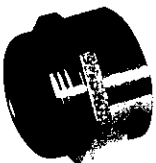
BS-Blindstopfen Messing vernickelt
(O-Dichtring bitte separat bestellen)
BS blanking piece brass nickel-plated
(please order O ring separately)



11	BS.11.MS	1-1106056-3
13,5	BS.13.MS	2-1106056-3
16	BS.16.MS	3-1106056-3
21	BS.21.MS	4-1106056-3
29	BS.29.MS	5-1106056-3
36	BS.36.MS	6-1106056-3
42	BS.42.MS	7-1106056-3

M16	BS.M16.MS	1-1102773-6
M20	BS.M20.MS	2-1102773-0
M25	BS.M25.MS	2-1102773-5
M32	BS.M32.MS	3-1102773-2
M40	BS.M40.MS	4-1102773-0
M50	BS.M50.MS	5-1102773-0

Zwischenstützen-6kt. Messing vernickelt
(O-Dichtring bitte separat bestellen)
Hexagonal adaptor brass, nickel-plated
(please order O ring separately)



11	ZW.ST.11.SKT-MS	1-1106057-4
13,5	ZW.ST.13.SKT-MS	2-1106057-4
16	ZW.ST.16.SKT-MS	3-1106057-4
21	ZW.ST.21.SKT-MS	4-1106057-4
29	ZW.ST.29.SKT-MS	5-1106057-4
36	ZW.ST.36.SKT-MS	6-1106057-4
42	ZW.ST.42.SKT-MS	7-1106057-4

PG	L	SW
11	17	20
13,5	19	22
16	20	24
21	22	30
29	24,5	40
36	28,5	50
42	32	57