

**DS36276**

***DS36276 FAILSAFE Multipoint Transceiver***

# Datasheet.Live



Literature Number: SNLS085A

# DS36276 FAILSAFE Multipoint Transceiver

## General Description

The DS36276 FAILSAFE Multipoint Transceiver is designed for use on bi-directional differential busses. It is compatible with existing TIA/EIA-485 transceivers, however, it offers an additional feature not supported by standard transceivers.

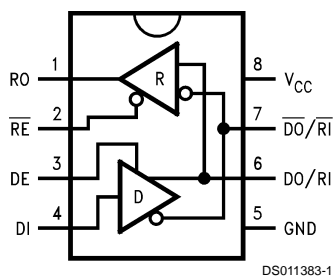
The FAILSAFE feature guarantees the receiver output to a known state when the Interface is in the following conditions: Floating Line, Idle Line (no active drivers), and Line Fault conditions (open or short). The receiver output is in a HIGH state for the following conditions: OPEN Inputs, Terminated Inputs (50Ω), and SHORTED Inputs.

FAILSAFE is a highly desirable feature when the transceivers are used with Asynchronous Controllers such as UARTs.

## Features

- FAILSAFE receiver, RO = HIGH for:
  - OPEN inputs
  - Terminated inputs
  - SHORTED inputs
- Compatible with popular interface standards:
  - TIA/EIA-485 (RS-485)
  - TIA/EIA-422-A (RS-422-A)
  - CCITT Recommendation V.11
- Bi-Directional Transceiver
  - Designed for multipoint transmission
- Separate driver input, driver enable, receiver enable, and receiver output for maximum flexibility
- Wide bus common mode range
  - (-7V to +12V)
- Pin compatible with: DS75176B, DS96176, DS3695 and SN75176A and B
- Available in SOIC package

## Connection and Logic Diagram



**Order Number DS36276M**  
See NS Package Number M08A

## Driver

Inputs			Outputs	
$\overline{RE}$	DE	DI	DO/RI	$\overline{DO}/\overline{RI}$
X	H	H	H	L
X	H	L	L	H
X	L	X	Z	Z

## Receiver

Inputs			Output
$\overline{RE}$	DE	$RI-\overline{RI}$	RO
L	L	$\geq 0V$	H
L	L	$\leq -500\text{ mV}$	L
H	X	X	Z

## Receiver FAILSAFE

Inputs			Output
$\overline{RE}$	DE	$RI-\overline{RI}$	RO
L	L	SHORTED	H
L	L	OPEN	H
H	X	X	Z

**Absolute Maximum Ratings** (Note 1)

If Military/Aerospace specified devices are required, please contact the National Semiconductor Sales Office/Distributors for availability and specifications.

Supply Voltage ( $V_{CC}$ )	7V
Input Voltage (DE, $\overline{RE}$ , and DI)	5.5V
Driver Output Voltage/ Receiver Input Voltage	-10V to +15V
Receiver Output Voltage (RO)	5.5V
Maximum Package Power Dissipation @ +25°C M Package (derate 5.8 mW/°C above +25°C)	726 mW
Storage Temperature Range	-65°C to +150°C

Lead Temperature (Soldering 4 sec.)	260°C
Max Junction Temperature	150°C
ESD Rating (HBM, 1.5 k $\Omega$ , 100 pF)	$\geq 6.0$ kV

**Recommended Operating Conditions**

	Min	Max	Units
Supply Voltage, $V_{CC}$	4.75	5.25	V
Bus Voltage	-7	+12	V
Operating Temperature ( $T_A$ ) DS36276	0	+70	°C

**Electrical Characteristics** (Notes 2, 4)

Over recommended Supply Voltage and Operating Temperature ranges, unless otherwise specified.

Symbol	Parameter	Conditions	Min	Typ	Max	Units		
<b>DRIVER CHARACTERISTICS</b>								
$V_{OD}$	Differential Output Voltage	$I_O = 0$ mA (No Load)	1.5	4.8	6.0	V		
$V_{oDO}$	Output Voltage	$I_O = 0$ mA (Output to GND)	0		6.0	V		
$\overline{V_{oDO}}$	Output Voltage		0		6.0	V		
$V_{T1}$	Differential Output Voltage (Termination Load)	$R_L = 54\Omega$ (485)	(Figure 1)		1.5	2.0	5.0	V
		$R_L = 100\Omega$ (422)			2.0	2.3	5.0	V
$\Delta V_{T1}$	Balance of $V_{T1}$ $ V_{T1}  -  \overline{V_{T1}} $	$R_L = 54\Omega$	(Note 3)		-0.2	0.07	+0.2	V
		$R_L = 100\Omega$			-0.2	0.07	+0.2	V
$V_{OS}$	Driver Common Mode Output Voltage	$R_L = 54\Omega$	(Figure 1)		0	2.5	3.0	V
		$R_L = 100\Omega$			0	2.3	3.0	V
$\Delta V_{OS}$	Balance of $V_{OS}$ $ V_{OS}  -  \overline{V_{OS}} $	$R_L = 54\Omega$	(Note 3)		-0.2	0.08	+0.2	V
		$R_L = 100\Omega$			-0.2	0.08	+0.2	V
$I_{OSD}$	Driver Short-Circuit Output Current	$V_O = +12V$	(Figure 3)			134	290	mA
		$V_O = V_{CC}$				140		mA
		$V_O = 0V$				-140		mA
		$V_O = -7V$				-180	-290	mA
<b>RECEIVER CHARACTERISTICS</b>								
$V_{TH}$	Differential Input High Threshold Voltage (Note 5)	$V_O = V_{OH}$ , $I_O = -0.4$ mA $-7V \leq V_{CM} \leq +12V$		-0.18	0	V		
$V_{TL}$	Differential Input Low Threshold Voltage (Note 5)	$V_O = V_{OL}$ , $I_O = 8.0$ mA $-7V \leq V_{CM} \leq +12V$	-0.5	-0.23		V		
$V_{HST}$	Hysteresis (Note 6)	$V_{CM} = 0V$		50		mV		
$I_{IN}$	Line Input Current ( $V_{CC} = 4.75V, 5.25V, 0V$ )	Other Input = 0V DE = $V_{IH}$ (Note 7)	$V_I = +12V$		0.7	1.0	mA	
			$V_I = -7V$		-0.5	-0.8	mA	
$I_{OSR}$	Short Circuit Current	$V_O = 0V$	RO	-5.0	-30	-85	mA	
$I_{OZ}$	TRI-STATE® Leakage Current	$V_O = 0.4$ to 2.4V		-20		+20	$\mu A$	
$V_{OH}$	Output High Voltage (Figure 12)	$V_{ID} = 0V$ , $I_{OH} = -0.4$ mA		2.5	3.5		V	
		$V_{ID} = OPEN$ , $I_{OH} = -0.4$ mA		2.5	3.5		V	
$V_{OL}$	Output Low Voltage (Figure 12)	$V_{ID} = -0.5V$ , $I_{OL} = +8$ mA		0.25	0.6	V		
		$V_{ID} = -0.5V$ , $I_{OL} = +16$ mA		0.35	0.7	V		
$R_{IN}$	Input Resistance		12	19		k $\Omega$		

## Electrical Characteristics (Notes 2, 4) (Continued)

Over recommended Supply Voltage and Operating Temperature ranges, unless otherwise specified.

Symbol	Parameter	Conditions	Min	Typ	Max	Units
<b>DEVICE CHARACTERISTICS</b>						
$V_{IH}$	High Level Input Voltage		2.0		$V_{CC}$	V
$V_{IL}$	Low Level Input Voltage		GND		0.8	V
$I_{IH}$	High Level Input Current	$V_{IH} = 2.4V$			20	$\mu A$
$I_{IL}$	Low Level Input Current	$V_{IL} = 0.4V$			-100	$\mu A$
$V_{CL}$	Input Clamp Voltage	$I_{CL} = -18\text{ mA}$		-0.75	-1.5	V
$I_{CC}$	Output Low Voltage	$DE = 3V, \overline{RE} = 0V, DI = 0V$		42	60	mA
$I_{CCR}$	Supply Current	$DE = 0V, \overline{RE} = 0V, DI = 0V$		28	45	mA
$I_{CCD}$	(No Load)	$DE = 3V, \overline{RE} = 3V, DI = 0V$		43	60	mA
$I_{CCX}$		$DE = 0V, \overline{RE} = 3V, DI = 0V$		31	50	mA

## Switching Characteristics (Note 4)

Over recommended Supply Voltage and Operating Temperature ranges, unless otherwise specified.

Symbol	Parameter	Conditions	Min	Typ	Max	Units
<b>DRIVER CHARACTERISTICS</b>						
$t_{PLHD}$	Diff. Prop. Delay Low to High	$R_L = 54\Omega$ $C_L = 50\text{ pF}$ $C_D = 50\text{ pF}$ (Figures 4, 5)	7	21	60	ns
$t_{PHLD}$	Diff. Prop. Delay High to Low		7	19	60	ns
$t_{SKD}$	Diff. Skew ( $ t_{PLHD} - t_{PHLD} $ )		2	10	ns	
$t_r$	Diff. Rise Time		12	50	ns	
$t_f$	Diff. Fall Time		12	50	ns	
$t_{PLH}$	Prop. Delay Low to High	$R_L = 27\Omega, C_L = 15\text{ pF}$ (Figures 6, 7)		22	45	ns
$t_{PHL}$	Prop. Delay High to Low			22	45	ns
$t_{PZH}$	Enable Time Z to High	$R_L = 110\Omega$ $C_L = 50\text{ pF}$ (Figure 8 – Figure 11)		32	55	ns
$t_{PZL}$	Enable Time Z to Low			32	65	ns
$t_{PHZ}$	Disable Time High to Z			22	55	ns
$t_{PLZ}$	Disable Time Low to Z			16	55	ns
<b>RECEIVER CHARACTERISTICS</b>						
$t_{PLH}$	Prop. Delay Low to High	$V_{ID} = -1.5V\text{ to }+1.5V$ $C_L = 15\text{ pF}$ (Figures 13, 14)	15	40	70	ns
$t_{PHL}$	Prop. Delay High to Low		15	42	70	ns
$t_{SK}$	Skew ( $ t_{PLH} - t_{PHL} $ )		2	15	ns	
$t_{PZH}$	Enable Time Z to High	$C_L = 15\text{ pF}$ (Figures 15, 16)		15	50	ns
$t_{PZL}$	Enable Time Z to Low			17	50	ns
$t_{PHZ}$	Disable Time High to Z			24	50	ns
$t_{PLZ}$	Disable Time Low to Z			19	50	ns

**Note 1:** "Absolute Maximum Ratings" are those values beyond which the safety of the device cannot be guaranteed. They are not meant to imply that the devices should be operated at these limits. The tables of "Electrical Characteristics" specify conditions for device operation.

**Note 2:** Current into device pins is defined as positive. Current out of device pins is defined as negative. All voltages are referenced to ground unless otherwise specified.

**Note 3:**  $\Delta |V_{T1}|$  and  $\Delta |V_{OS}|$  are changes in magnitude of  $V_{T1}$  and  $V_{OS}$ , respectively, that occur when the input changes state.

**Note 4:** All typicals are given for  $V_{CC} = 5.0V$  and  $T_A = +25^\circ C$ .

**Note 5:** Threshold parameter limits specified as an algebraic value rather than by magnitude.

**Note 6:** Hysteresis defined as  $V_{HST} = V_{TH} - V_{TL}$ .

**Note 7:**  $I_{IN}$  includes the receiver input current and driver TRI-STATE leakage current.

# Parameter Measurement Information

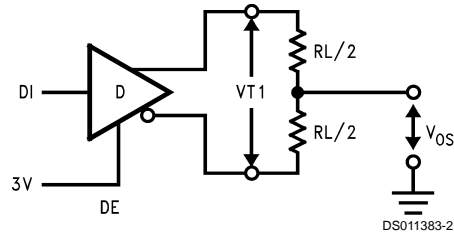


FIGURE 1. Driver  $V_{T1}$  and  $V_{OS}$  Test Circuit

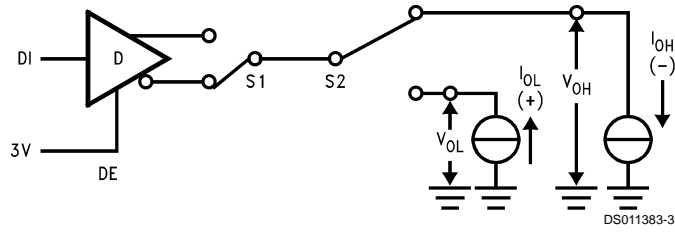


FIGURE 2. Driver  $V_{OH}$  and  $V_{OL}$  Test Circuit

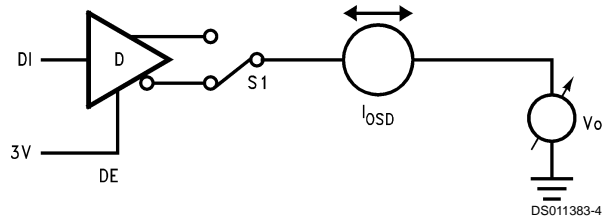


FIGURE 3. Driver Short Circuit Test Circuit

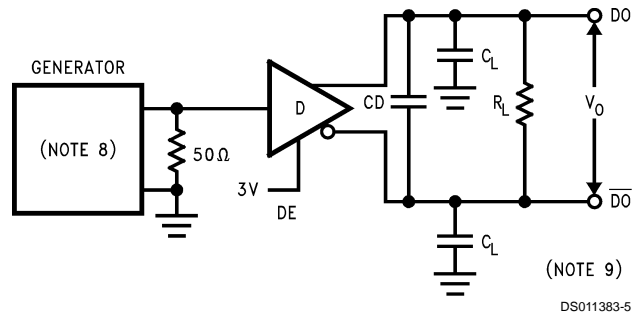


FIGURE 4. Driver Differential Propagation Delay and Transition Time Test Circuit

Parameter Measurement Information (Continued)

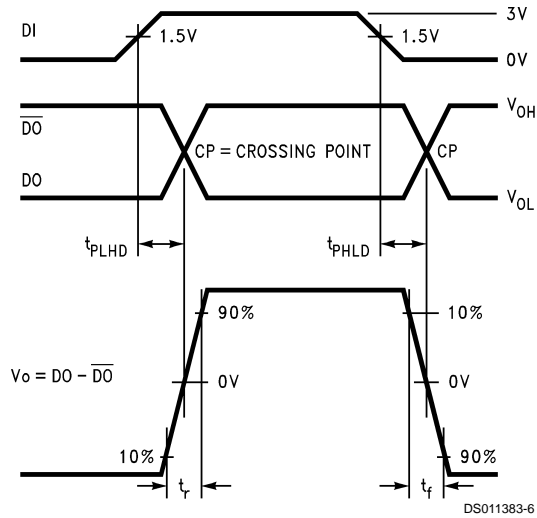


FIGURE 5. Driver Differential Propagation Delays and Transition Times

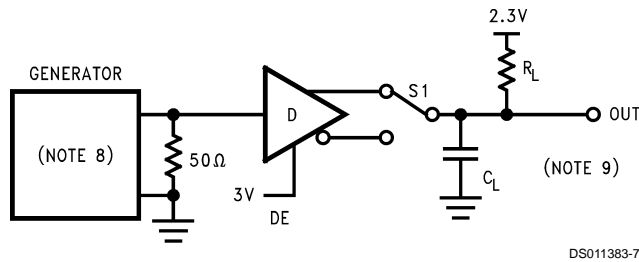


FIGURE 6. Driver Propagation Delay Test Circuit

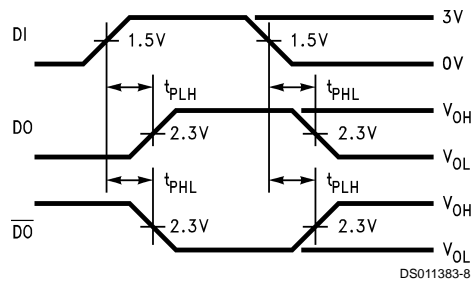
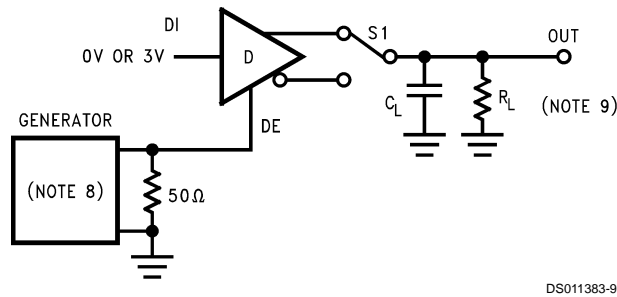


FIGURE 7. Driver Propagation Delays



S1 to DO for DI = 3V  
S1 to DO-bar for DI = 0V

FIGURE 8. Driver TRI-STATE Test Circuit ( $t_{PZH}$ ,  $t_{PHZ}$ )

Parameter Measurement Information (Continued)

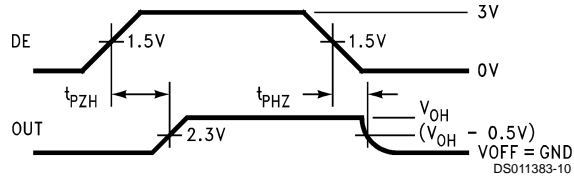
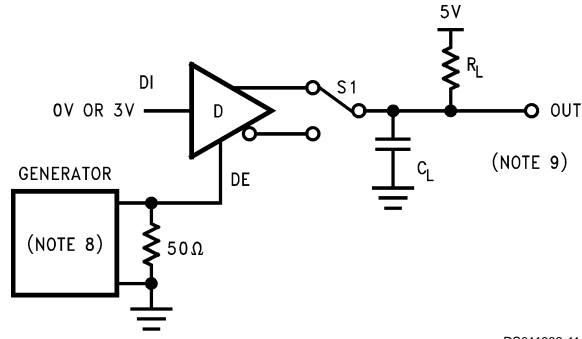


FIGURE 9. Driver TRI-STATE Delays ( $t_{PZH}$ ,  $t_{PHZ}$ )



S1 to DO for DI = 0V  
S1 to  $\overline{DO}$  for DI = 3V

FIGURE 10. Driver TRI-STATE Test Circuit ( $t_{PZL}$ ,  $t_{PLZ}$ )

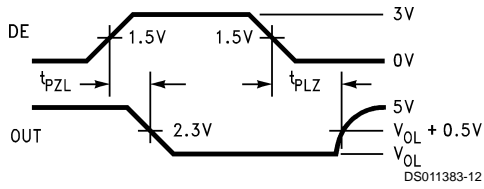


FIGURE 11. Driver TRI-STATE Delays ( $t_{PZL}$ ,  $t_{PLZ}$ )

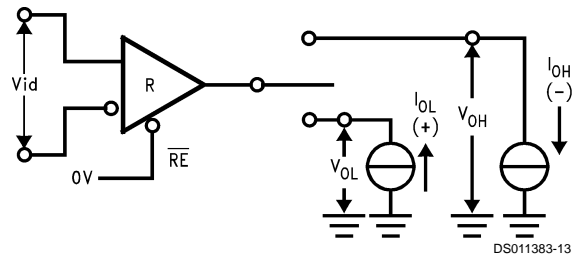


FIGURE 12. Receiver  $V_{OH}$  and  $V_{OL}$

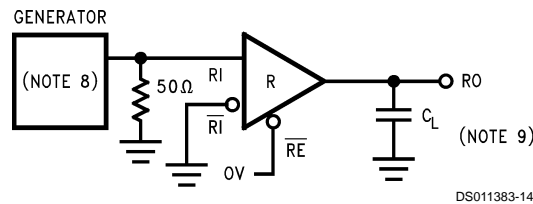


FIGURE 13. Receiver Propagation Delay Test Circuit

Parameter Measurement Information (Continued)

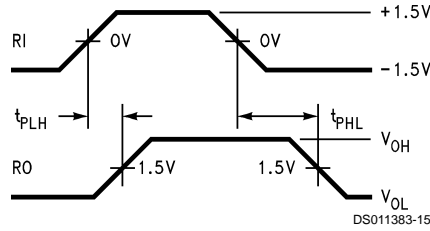


FIGURE 14. Receiver Propagation Delays

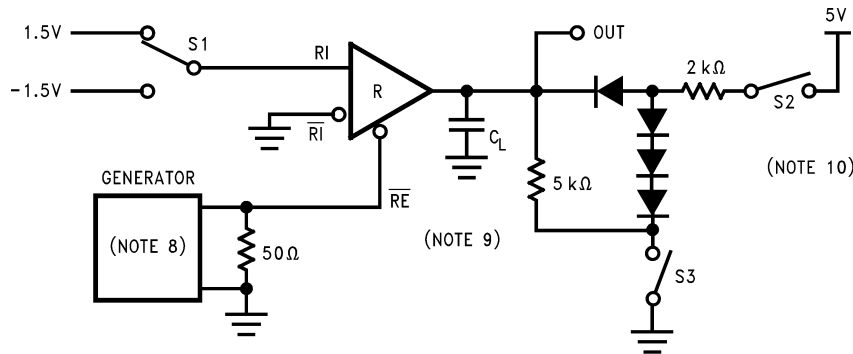
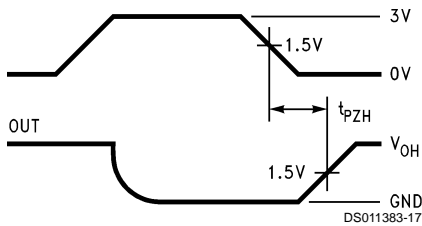
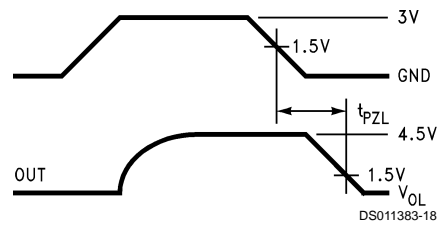


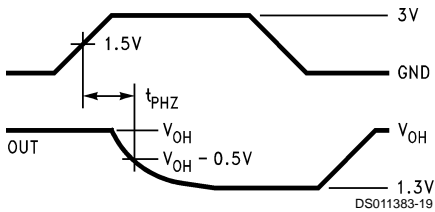
FIGURE 15. Receiver TRI-STATE Delay Test Circuit



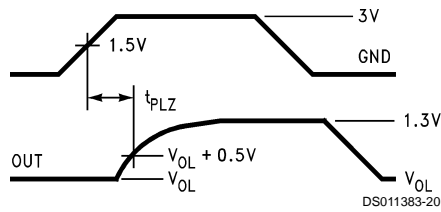
S1 1.5V  
S2 OPEN  
S3 CLOSED



S1 -1.5V  
S2 CLOSED  
S3 OPEN



S1 1.5V  
S2 CLOSED  
S3 CLOSED



S1 -1.5V  
S2 CLOSED  
S3 CLOSED

**Note 8:** The input pulse is supplied by a generator having the following characteristics:  $f = 1.0 \text{ MHz}$ , 50% duty cycle,  $t_r$  and  $t_f < 6.0 \text{ ns}$ ,  $Z_O = 50\Omega$ .

**Note 9:**  $C_L$  includes probe and stray capacitance.

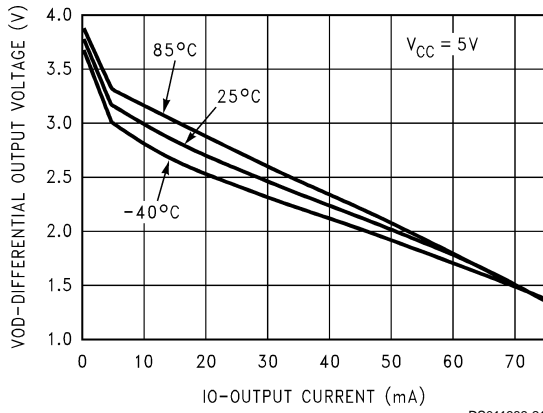
**Note 10:** Diodes are 1N916 or equivalent.

FIGURE 16. Receiver Enable and Disable Timing



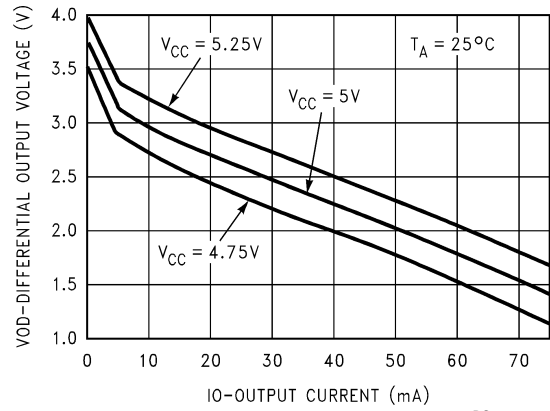
# Typical Performance Characteristics

Differential Output Voltage vs Output Current



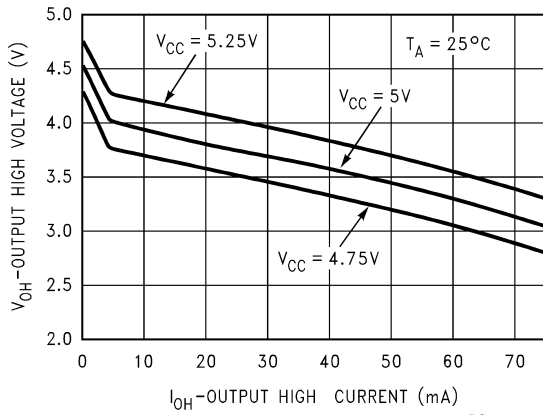
DS011383-21

Differential Output Voltage vs Output Current



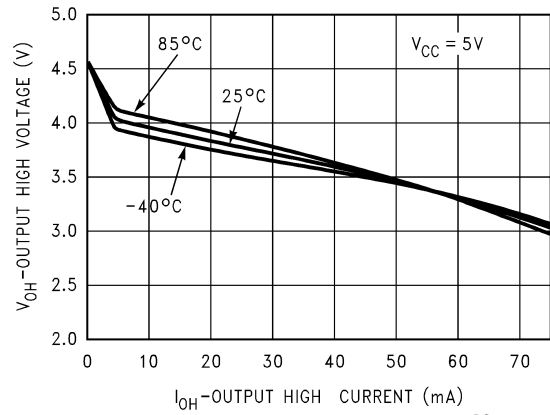
DS011383-22

Driver VOH vs IOH vs VCC



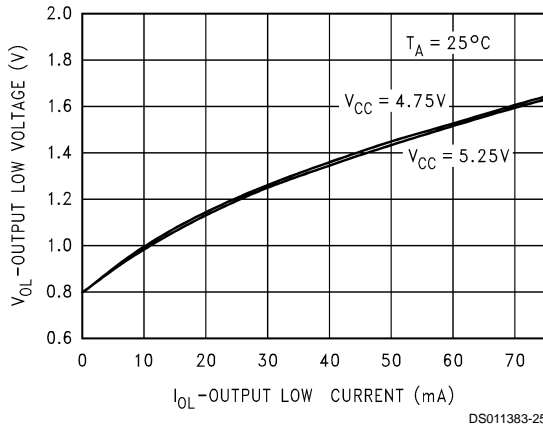
DS011383-23

Driver VOH vs IOH vs Temperature



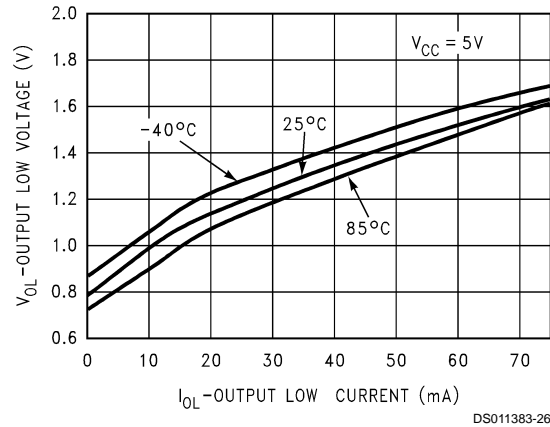
DS011383-24

Driver VOL vs IOL vs VCC



DS011383-25

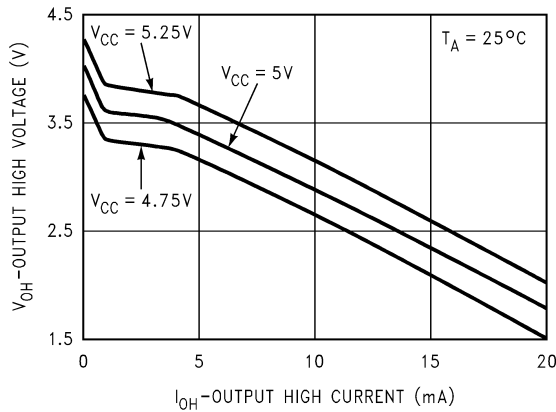
Driver VOL vs IOL vs Temperature



DS011383-26

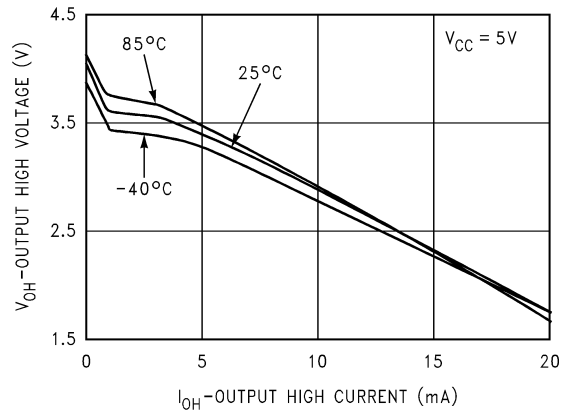
# Typical Performance Characteristics (Continued)

Receiver  $V_{OH}$  vs  $I_{OH}$  vs  $V_{CC}$



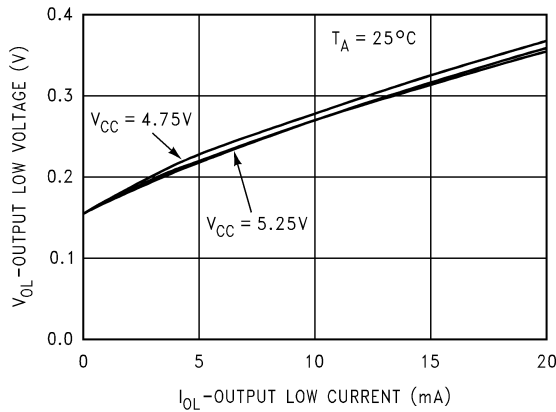
DS011383-27

Receiver  $V_{OH}$  vs  $I_{OH}$  vs Temperature



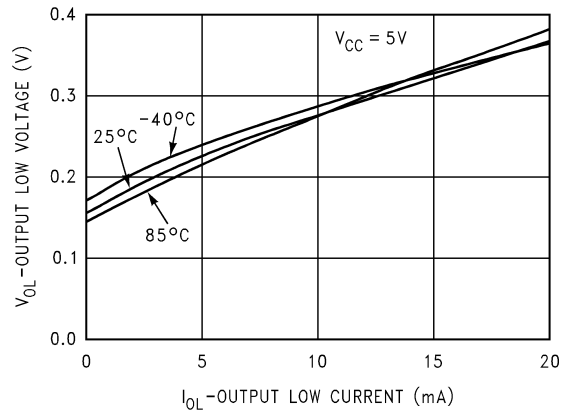
DS011383-28

Receiver  $V_{OL}$  vs  $I_{OL}$  vs  $V_{CC}$



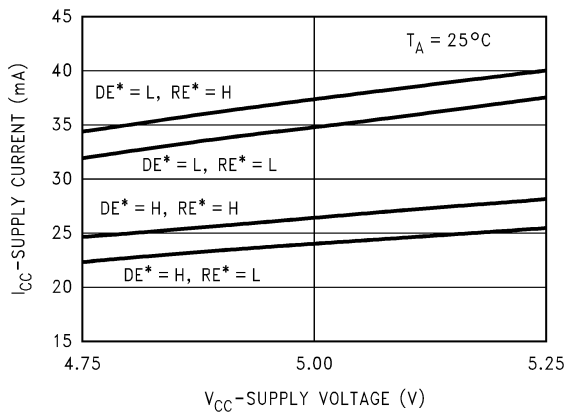
DS011383-29

Receiver  $V_{OL}$  vs  $I_{OL}$  vs Temperature



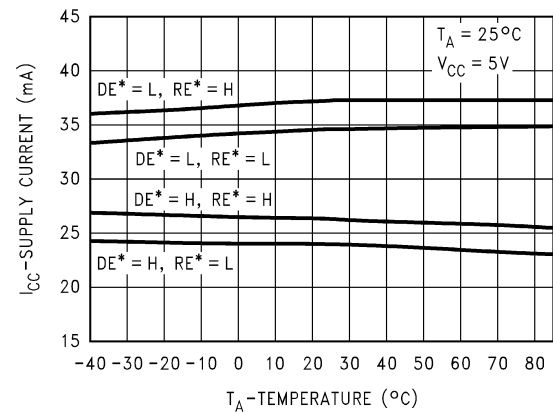
DS011383-30

Supply Current vs Supply Voltage



DS011383-31

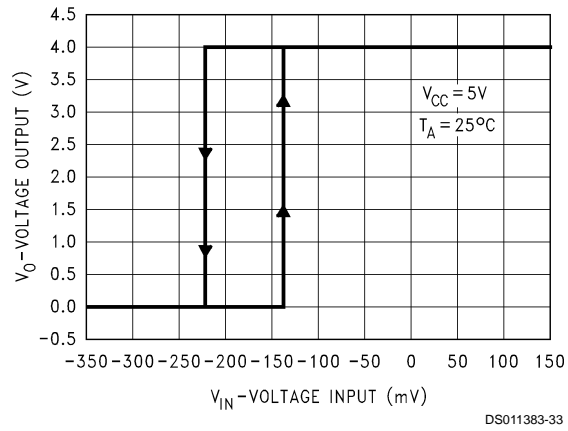
Supply Current vs Temperature



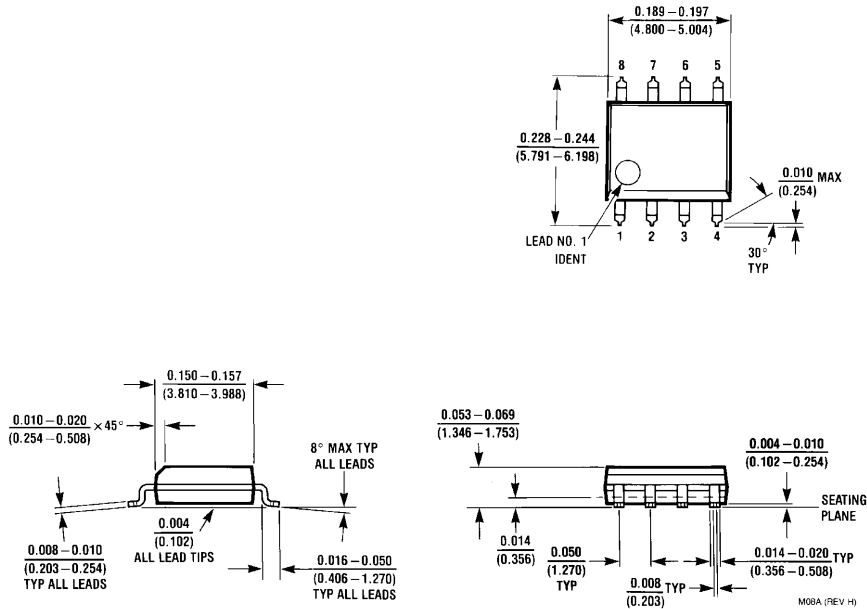
DS011383-32

## Typical Performance Characteristics (Continued)

### Voltage Output vs Voltage Input (Hysteresis)



**Physical Dimensions** inches (millimeters) unless otherwise noted



**Order Number DS36276M**  
**NS Package Number M08A**

**LIFE SUPPORT POLICY**

NATIONAL'S PRODUCTS ARE NOT AUTHORIZED FOR USE AS CRITICAL COMPONENTS IN LIFE SUPPORT DEVICES OR SYSTEMS WITHOUT THE EXPRESS WRITTEN APPROVAL OF THE PRESIDENT AND GENERAL COUNSEL OF NATIONAL SEMICONDUCTOR CORPORATION. As used herein:

1. Life support devices or systems are devices or systems which, (a) are intended for surgical implant into the body, or (b) support or sustain life, and whose failure to perform when properly used in accordance with instructions for use provided in the labeling, can be reasonably expected to result in a significant injury to the user.
2. A critical component is any component of a life support device or system whose failure to perform can be reasonably expected to cause the failure of the life support device or system, or to affect its safety or effectiveness.



**National Semiconductor Corporation**  
Americas  
Email: support@nsc.com

**National Semiconductor Europe**  
Fax: +49 (0) 180-530 85 86  
Email: europe.support@nsc.com  
Deutsch Tel: +49 (0) 69 9508 6208  
English Tel: +44 (0) 870 24 0 2171  
Français Tel: +33 (0) 1 41 91 8790

**National Semiconductor Asia Pacific Customer Response Group**  
Tel: 65-2544466  
Fax: 65-2504466  
Email: ap.support@nsc.com

**National Semiconductor Japan Ltd.**  
Tel: 81-3-5639-7560  
Fax: 81-3-5639-7507

www.national.com

## IMPORTANT NOTICE

Texas Instruments Incorporated and its subsidiaries (TI) reserve the right to make corrections, modifications, enhancements, improvements, and other changes to its products and services at any time and to discontinue any product or service without notice. Customers should obtain the latest relevant information before placing orders and should verify that such information is current and complete. All products are sold subject to TI's terms and conditions of sale supplied at the time of order acknowledgment.

TI warrants performance of its hardware products to the specifications applicable at the time of sale in accordance with TI's standard warranty. Testing and other quality control techniques are used to the extent TI deems necessary to support this warranty. Except where mandated by government requirements, testing of all parameters of each product is not necessarily performed.

TI assumes no liability for applications assistance or customer product design. Customers are responsible for their products and applications using TI components. To minimize the risks associated with customer products and applications, customers should provide adequate design and operating safeguards.

TI does not warrant or represent that any license, either express or implied, is granted under any TI patent right, copyright, mask work right, or other TI intellectual property right relating to any combination, machine, or process in which TI products or services are used. Information published by TI regarding third-party products or services does not constitute a license from TI to use such products or services or a warranty or endorsement thereof. Use of such information may require a license from a third party under the patents or other intellectual property of the third party, or a license from TI under the patents or other intellectual property of TI.

Reproduction of TI information in TI data books or data sheets is permissible only if reproduction is without alteration and is accompanied by all associated warranties, conditions, limitations, and notices. Reproduction of this information with alteration is an unfair and deceptive business practice. TI is not responsible or liable for such altered documentation. Information of third parties may be subject to additional restrictions.

Resale of TI products or services with statements different from or beyond the parameters stated by TI for that product or service voids all express and any implied warranties for the associated TI product or service and is an unfair and deceptive business practice. TI is not responsible or liable for any such statements.

TI products are not authorized for use in safety-critical applications (such as life support) where a failure of the TI product would reasonably be expected to cause severe personal injury or death, unless officers of the parties have executed an agreement specifically governing such use. Buyers represent that they have all necessary expertise in the safety and regulatory ramifications of their applications, and acknowledge and agree that they are solely responsible for all legal, regulatory and safety-related requirements concerning their products and any use of TI products in such safety-critical applications, notwithstanding any applications-related information or support that may be provided by TI. Further, Buyers must fully indemnify TI and its representatives against any damages arising out of the use of TI products in such safety-critical applications.

TI products are neither designed nor intended for use in military/aerospace applications or environments unless the TI products are specifically designated by TI as military-grade or "enhanced plastic." Only products designated by TI as military-grade meet military specifications. Buyers acknowledge and agree that any such use of TI products which TI has not designated as military-grade is solely at the Buyer's risk, and that they are solely responsible for compliance with all legal and regulatory requirements in connection with such use.

TI products are neither designed nor intended for use in automotive applications or environments unless the specific TI products are designated by TI as compliant with ISO/TS 16949 requirements. Buyers acknowledge and agree that, if they use any non-designated products in automotive applications, TI will not be responsible for any failure to meet such requirements.

Following are URLs where you can obtain information on other Texas Instruments products and application solutions:

### Products

Audio	<a href="http://www.ti.com/audio">www.ti.com/audio</a>
Amplifiers	<a href="http://amplifier.ti.com">amplifier.ti.com</a>
Data Converters	<a href="http://dataconverter.ti.com">dataconverter.ti.com</a>
DLP® Products	<a href="http://www.dlp.com">www.dlp.com</a>
DSP	<a href="http://dsp.ti.com">dsp.ti.com</a>
Clocks and Timers	<a href="http://www.ti.com/clocks">www.ti.com/clocks</a>
Interface	<a href="http://interface.ti.com">interface.ti.com</a>
Logic	<a href="http://logic.ti.com">logic.ti.com</a>
Power Mgmt	<a href="http://power.ti.com">power.ti.com</a>
Microcontrollers	<a href="http://microcontroller.ti.com">microcontroller.ti.com</a>
RFID	<a href="http://www.ti-rfid.com">www.ti-rfid.com</a>
OMAP Mobile Processors	<a href="http://www.ti.com/omap">www.ti.com/omap</a>
Wireless Connectivity	<a href="http://www.ti.com/wirelessconnectivity">www.ti.com/wirelessconnectivity</a>

### Applications

Communications and Telecom	<a href="http://www.ti.com/communications">www.ti.com/communications</a>
Computers and Peripherals	<a href="http://www.ti.com/computers">www.ti.com/computers</a>
Consumer Electronics	<a href="http://www.ti.com/consumer-apps">www.ti.com/consumer-apps</a>
Energy and Lighting	<a href="http://www.ti.com/energy">www.ti.com/energy</a>
Industrial	<a href="http://www.ti.com/industrial">www.ti.com/industrial</a>
Medical	<a href="http://www.ti.com/medical">www.ti.com/medical</a>
Security	<a href="http://www.ti.com/security">www.ti.com/security</a>
Space, Avionics and Defense	<a href="http://www.ti.com/space-avionics-defense">www.ti.com/space-avionics-defense</a>
Transportation and Automotive	<a href="http://www.ti.com/automotive">www.ti.com/automotive</a>
Video and Imaging	<a href="http://www.ti.com/video">www.ti.com/video</a>

TI E2E Community Home Page

[e2e.ti.com](http://e2e.ti.com)

Mailing Address: Texas Instruments, Post Office Box 655303, Dallas, Texas 75265  
Copyright © 2011, Texas Instruments Incorporated