
CERAFIL®

 *CERAFIL® is the Registered Trademark
of Murata Manufacturing Co., Ltd.

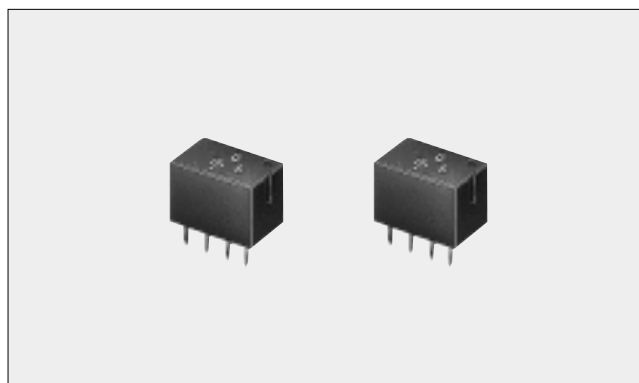
 Ceramic Filter for Communications Equipment **CFWS455□Y Series**

Resin Molded, G.D.T. Flat Type Ceramic Filter

CFWS455□Y series are high selectivity ceramic filters, which consist of 6 ceramic elements connected in a ladder form. Most suitable for digital communications and mobile telephones because of their improved G.D.T. characteristics.

■FEATURES

1. High selectivity.
2. A variety of bandwidth are available.
3. Excellent G.D.T. characteristics are available within pass bandwidth.
4. Easily mounted on a printed circuit board.
5. Operating temperature range : -20°C to $+80^{\circ}\text{C}$
Storage temperature range : -40°C to $+85^{\circ}\text{C}$

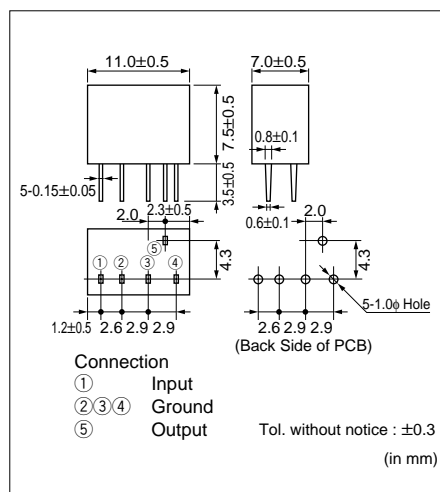


■SPECIFICATIONS

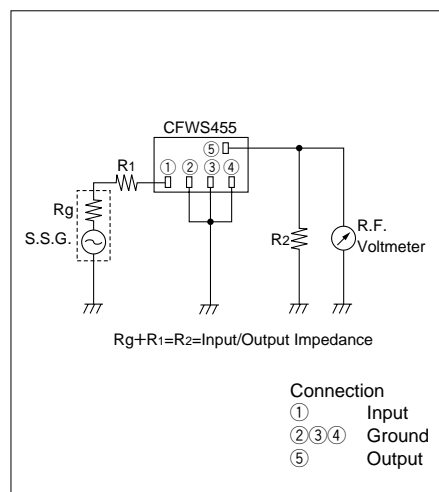
Character-istics Part Number	Center Frequency (kHz)	6dB Bandwidth (kHz) min.	50dB Bandwidth (kHz) max.	Attenuation 455±100kHz (dB)min.	Insertion Loss (dB) max.	Input/Output Impedance (Ω)	G.D.T.Deviation (μ sec.) *
CFWS455BY	455±1.5	±15	±35	35	6	1500	[30] (±10kHz)
CFWS455CY	455±1.5	±12.5	±30	35	7	1500	[30] (± 8kHz)
CFWS455DY	455±1.0	±10	±25	35	8	1500	[30] (± 7kHz)
CFWS455EY	455±1.0	± 7.5	±20	35	9	1500	[30] (± 5kHz)
CFWS455FY	455±1.0	± 6	±17.5	35	10	2000	[40] (± 4kHz)
CFWS455GY	455±1.0	± 4.5	±15	35	13	2000	[40] (± 3kHz)

*Typical value.

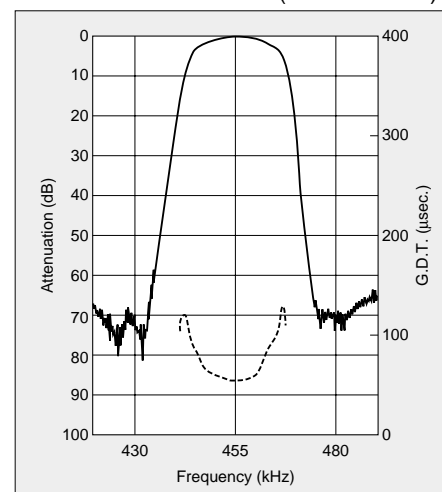
■DIMENSIONS



■TEST CIRCUIT



■CHARACTERISTICS (CFWS455DY)



Note : To take best advantage of safety features of ceramic filters, connect the output to an IF amplifier through a DC cut capacitor. Avoid directly applying a direct current to output end of ceramic filters (between ⑤ and ②,③,④).